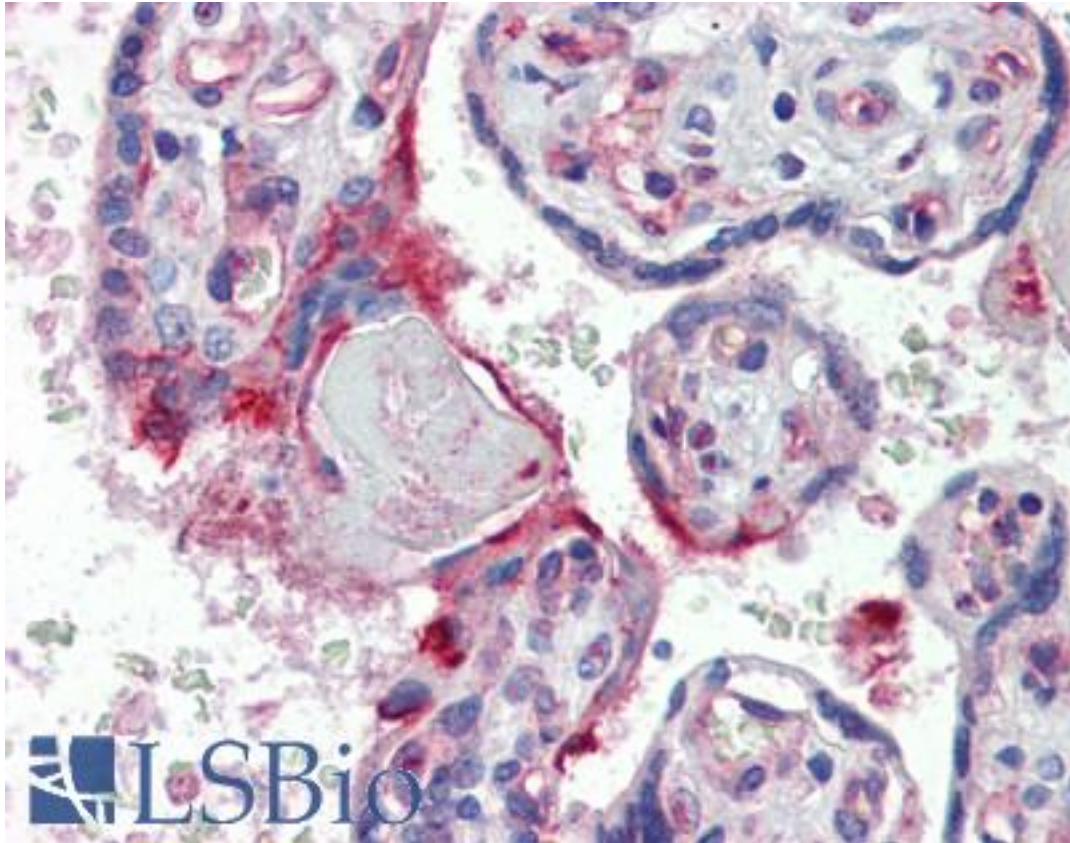


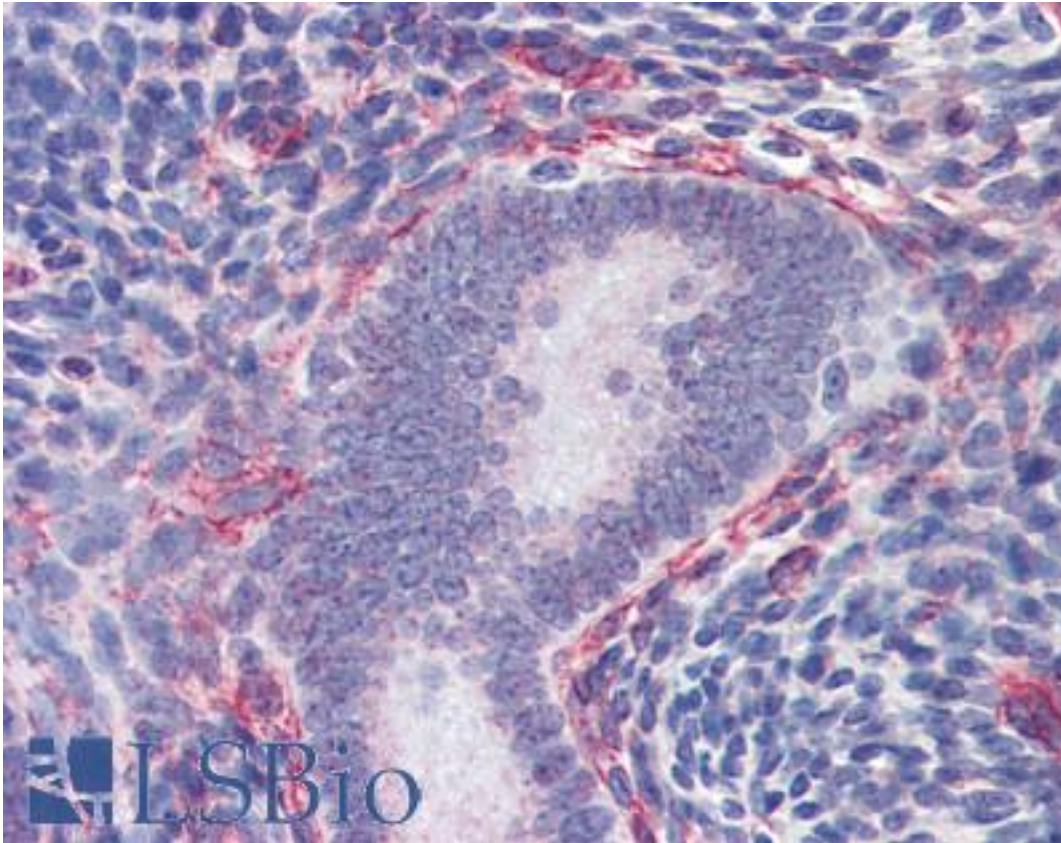
SRC Rabbit anti-Human Polyclonal (N-Terminus) Antibody - LS-B3308 - LSBio	
<b>CatalogID:</b>	LS-B3308
<b>Validation:</b>	This antibody replaces catalog number LS-C99388. It has been validated for use in the following assays: IHC-P.
<b>Target:</b>	v-src avian sarcoma (Schmidt-Ruppin A-2) viral oncogene homolog
<b>Synonyms:</b>	SRC Antibody, ASV Antibody, Pp60c-src Antibody, Tyrosine kinase pp60c-src Antibody, Tyrosine-protein kinase SRC-1 Antibody, v-src Antibody, C-SRC Antibody, p60-Src Antibody, Proto-oncogene c-Src Antibody, SRC1 Antibody
<b>Family / Subfamily:</b>	Protein Kinase / Src
<b>Host</b>	SRC antibody was produced in Rabbit
<b>Clonality:</b>	Polyclonal
<b>Immunogen Species:</b>	SRC antibody was raised against Human
<b>Antigen Type:</b>	Synthetic peptide
<b>Immunogen:</b>	SRC antibody was raised against kLH conjugated synthetic peptide selected from the N-terminal region of human SRC.
<b>Epitope:</b>	N-Terminus
<b>Reactivity:</b>	Human, Mouse
<b>Purification:</b>	Ammonium sulfate precipitation
<b>Presentation:</b>	PBS, 0.09% sodium azide
<b>Recommended Storage:</b>	Maintain refrigerated at 2-8°C for up to 6 months. For long term storage store at -20°C.
<b>Usage Summary:</b>	Immunohistochemistry: LS-B3308 was validated for use in immunohistochemistry on a panel of 21 formalin-fixed, paraffin-embedded (FFPE) human tissues after heat induced antigen retrieval in pH 6.0 citrate buffer. After incubation with the primary antibody, slides were incubated with biotinylated secondary antibody, followed by alkaline phosphatase-streptavidin and chromogen. The stained slides were evaluated by a pathologist to confirm staining specificity. The optimal working concentration for LS-B3308 was determined to be 5 ug/ml.
<b>Uses:</b>	IHC - Paraffin (5 µg/ml), Immunofluorescence (1:10 - 1:50), Western blot (1:1000) (Optimal dilution to be determined by the researcher)
<b>Size:</b>	50 µg

**Immunohistochemistry Image:**



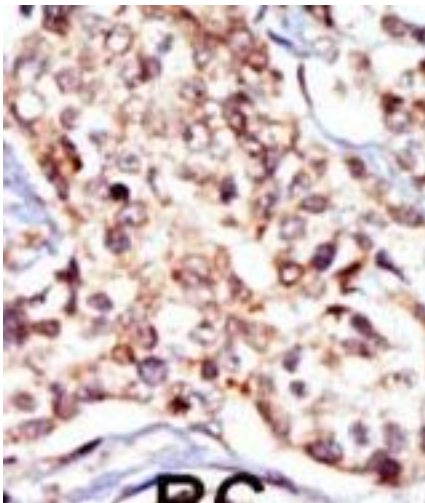
Anti-SRC antibody IHC of human placenta. Immunohistochemistry of formalin-fixed, paraffin-embedded tissue after heat-induced antigen retrieval. Antibody LS-B3308 concentration 5 ug/ml.

**Immunohistochemistry Image:**



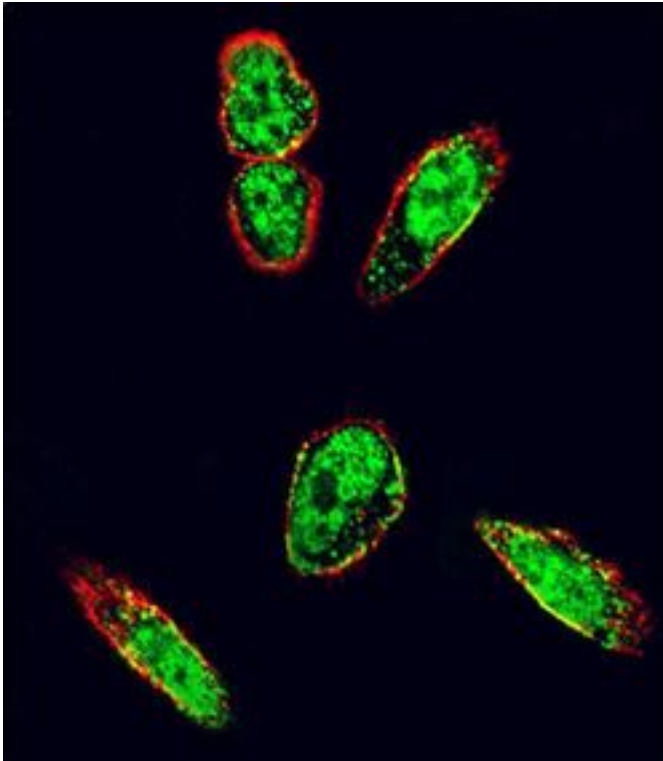
Anti-SRC antibody IHC of human uterus. Immunohistochemistry of formalin-fixed, paraffin-embedded tissue after heat-induced antigen retrieval. Antibody LS-B3308 concentration 5 ug/ml.

**Immunohistochemistry Image:**



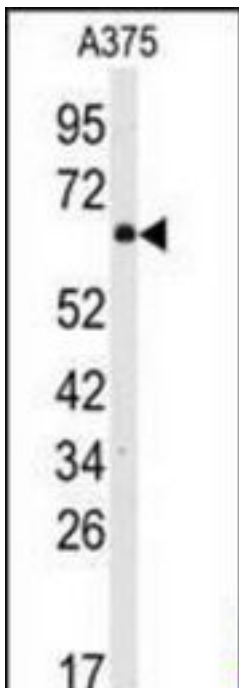
Formalin-fixed and paraffin-embedded human cancer tissue reacted with the primary antibody, which was peroxidase-conjugated to the secondary antibody, followed by DAB staining. This data demonstrates the use of this antibody for immunohistochemistry; clinical relevance has not been evaluated. BC = breast carcinoma; HC = hepatocarcinoma.

**Immunofluorescence Image:**



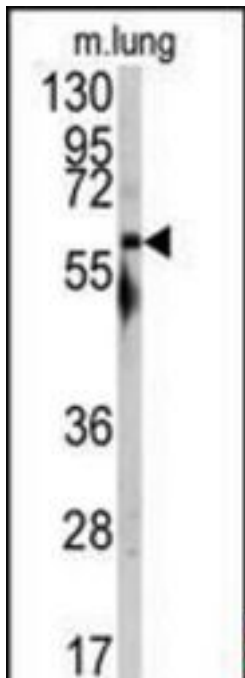
Confocal immunofluorescent analysis of SRC Antibody (N-term) with A375 cell followed by Alexa Fluor 488-conjugated goat anti-rabbit IgG (green). Actin filaments have been labeled with Alexa Fluor 555 phalloidin (red).

**Western Blot Image:**



Western blot of anti-SRC Antibody (N-term) LS-B3308 in A375 cell line lysates (35 ug/lane). SRC (arrow) was detected using the purified Pab.

**Western Blot Image:**



Western blot of anti-SRC Antibody (N-term) LS-B3308 in mouse lung tissue lysates (35 ug/lane). SRC (arrow) was detected using the purified Pab.

**Requested From:**

Japan

Laboratory Reagent For In Vitro Research Use Only

Not for resale without prior written consent from LifeSpan BioSciences, Inc.

Created on 9/23/2014

© 2014 LifeSpan BioSciences