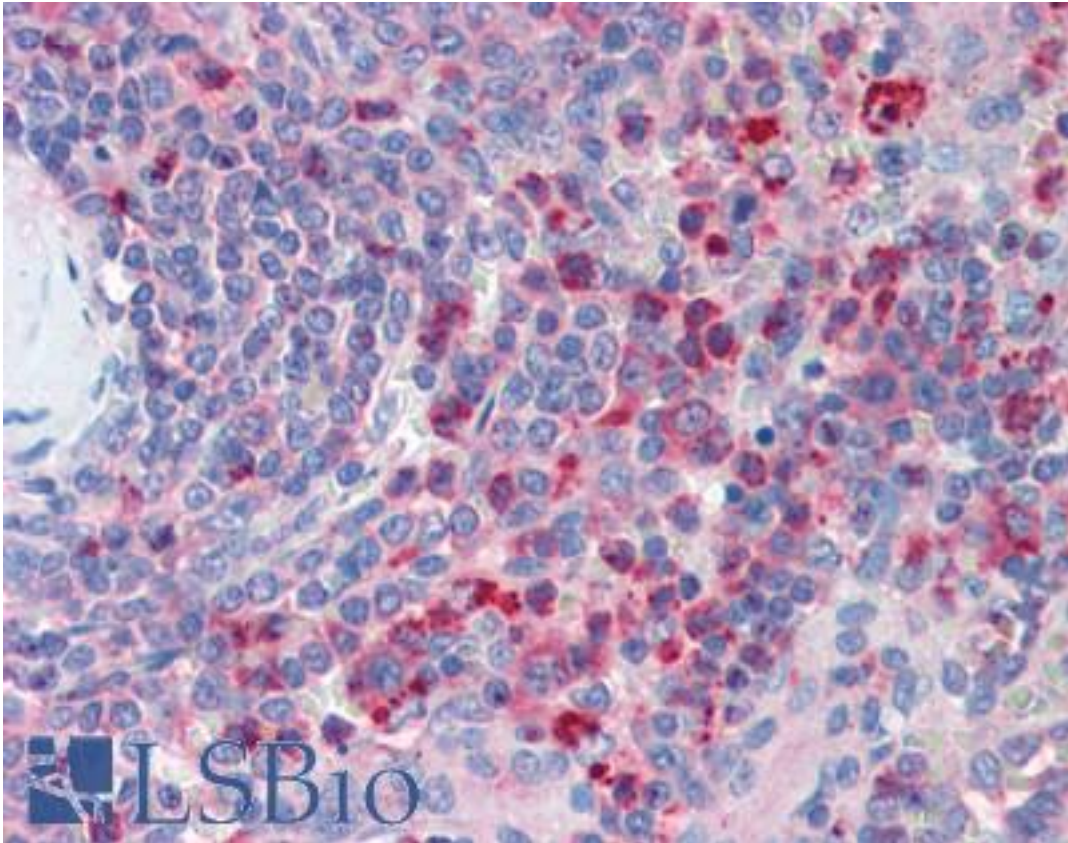


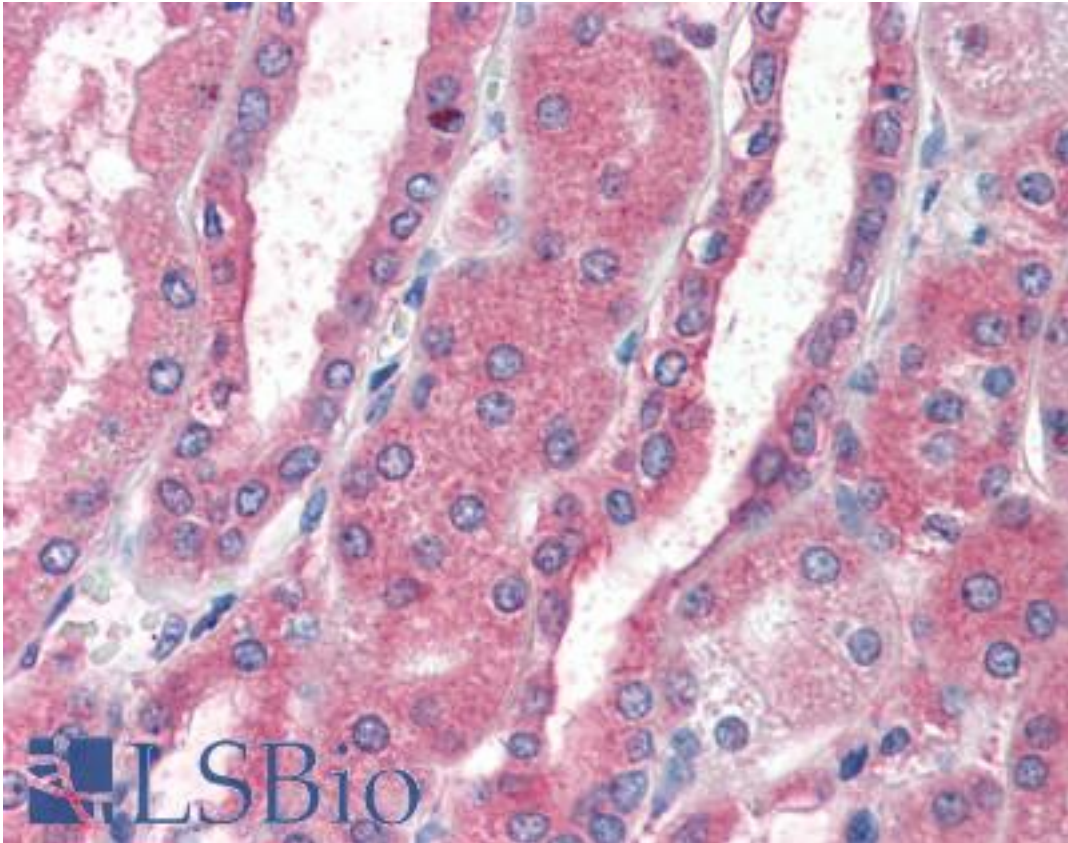
CXCR4 Goat anti-Mouse Polyclonal (aa14-40) Antibody - LS-B3306 - LSBio	
<b>CatalogID:</b>	LS-B3306
<b>Validation:</b>	This antibody replaces catalog number LS-C83945. It has been validated for use in the following assays: IHC-P.
<b>Target:</b>	chemokine (C-X-C motif) receptor 4 (CXCR4)
<b>Synonyms:</b>	CXCR4 Antibody, CD184 Antibody, CD184 antigen Antibody, Cmkar4 Antibody, Cxc chemokine receptor 4 Antibody, CXCR-4 Antibody, CXC-R4 Antibody, D2S201E Antibody, FB22 Antibody, Fusin Antibody, HM89 Antibody, LCR1 Antibody, NPY3R Antibody, NPYRL Antibody, NPYY3R Antibody, Npyy3 Antibody, HSY3RR Antibody, SDF-1 receptor Antibody, WHIM Antibody, C-x-c chemokine receptor 4 Antibody, LESTR Antibody, Neuropeptide Y receptor Y3 Antibody, NPYR Antibody
<b>Family / Subfamily:</b>	GPCR / Chemokine
<b>Host</b>	CXCR4 antibody was produced in Goat
<b>Clonality:</b>	Polyclonal
<b>Immunogen Species:</b>	CXCR4 antibody was raised against Mouse
<b>Immunogen:</b>	CXCR4 antibody was raised against ySEEVGSGDYDSNKEPCFRDENVHFNR corresponding to the N-terminal extracellular domain of mouse CXCR4 receptor. Percent identity by BLAST analysis: Mouse (100%); Rat (93%); Baboon, Monkey, Marmoset, Elephant, Rabbit (81%).
<b>Specificity:</b>	This antibody binds to CXCR4 receptor on mouse spleen leukocytes as determined by immunocytochemistry.
<b>Epitope:</b>	aa14-40
<b>Reactivity:</b>	Mouse, Human
<b>Predicted Reactivity:</b>	Rat
<b>Purification:</b>	Immunoaffinity purified
<b>Presentation:</b>	Phosphate buffered saline, 1 mg/ml BSA, 0.1% sodium azide
<b>Recommended Storage:</b>	+4°C or -20°C, Avoid repeated freezing and thawing.
<b>Usage Summary:</b>	Immunohistochemistry: LS-B3306 was validated for use in immunohistochemistry on a panel of 21 formalin-fixed, paraffin-embedded (FFPE) human tissues after heat induced antigen retrieval in pH 6.0 citrate buffer. After incubation with the primary antibody, slides were incubated with biotinylated secondary antibody, followed by alkaline phosphatase-streptavidin and chromogen. The stained slides were evaluated by a pathologist to confirm staining specificity. The optimal working concentration for LS-B3306 was determined to be 5 ug/ml.
<b>Uses:</b>	IHC - Paraffin (5 µg/ml), Western blot (1:500), ELISA (1:25000) (Optimal dilution to be determined by the researcher)
<b>Size:</b>	50 µg
<b>Concentration:</b>	1 mg/ml

**Immunohistochemistry Image:**



Anti-CXCR4 antibody IHC of human spleen. Immunohistochemistry of formalin-fixed, paraffin-embedded tissue after heat-induced antigen retrieval. Antibody LS-B3306 concentration 5 ug/ml.

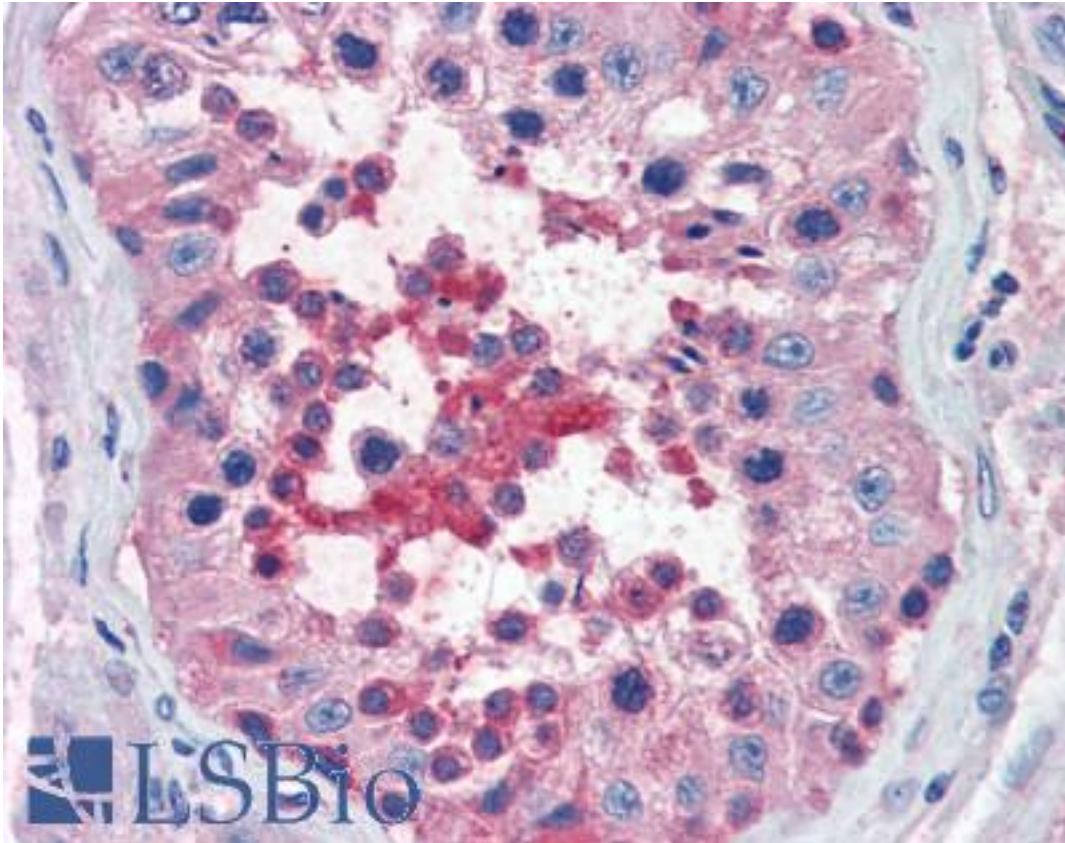
**Immunohistochemistry Image:**



Anti-CXCR4 antibody IHC of human kidney. Immunohistochemistry of formalin-fixed, paraffin-embedded tissue after heat-induced antigen retrieval. Antibody LS-B3306 concentration 5 ug/ml.



**Immunohistochemistry Image:**



Anti-CXCR4 antibody IHC of human testis. Immunohistochemistry of formalin-fixed, paraffin-embedded tissue after heat-induced antigen retrieval. Antibody LS-B3306 concentration 5 ug/ml.

**Requested From:**

Japan

Laboratory Reagent For In Vitro Research Use Only

Not for resale without prior written consent from LifeSpan BioSciences, Inc.

Created on 9/23/2014

© 2014 LifeSpan BioSciences