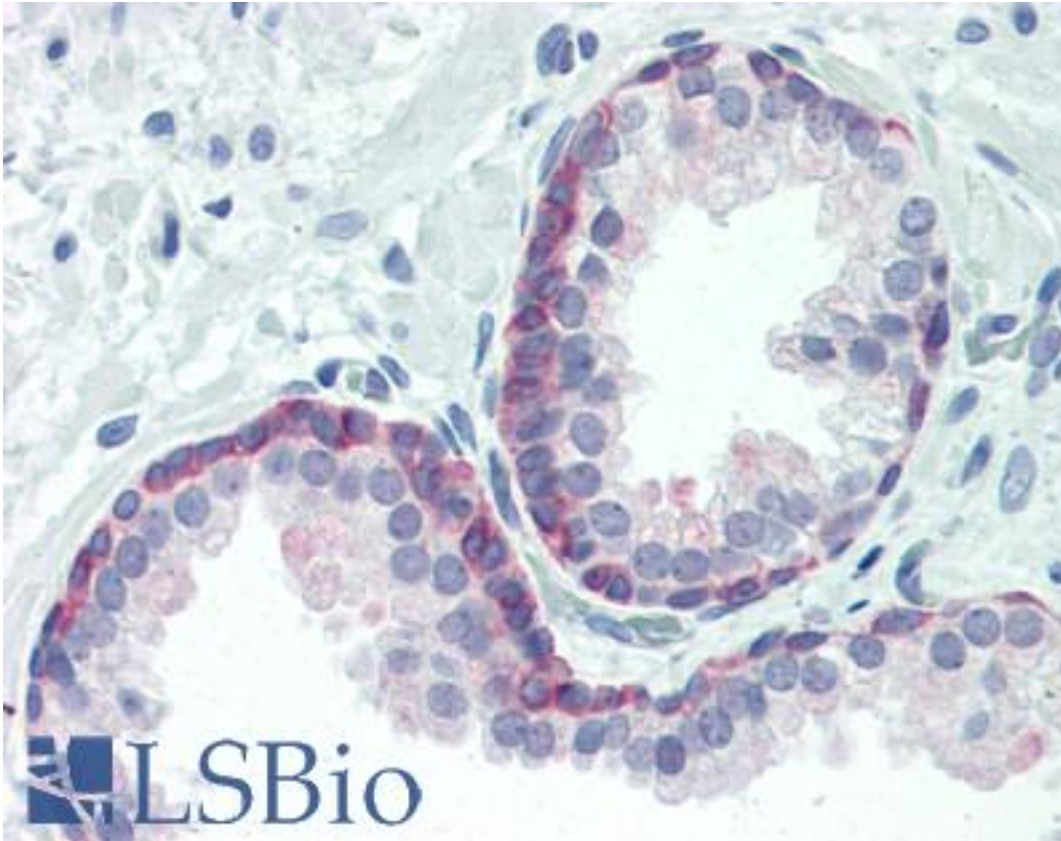


FOXO3 / FOXO3A Rabbit anti-Human Polyclonal (pThr24/Thr32) Antibody - LS-B3303 - LSBio	
CatalogID:	LS-B3303
Validation:	This antibody replaces catalog number LS-C15217. It has been validated for use in the following assays: IHC-P.
Target:	forkhead box O3 (FOXO3)
Synonyms:	FOXO3 Antibody, AF6q21 Antibody, AF6q21 protein Antibody, Forkhead box O3 Antibody, Forkhead box O3A Antibody, FOXO3A Antibody, FKHRL1P2 Antibody, Forkhead box protein O3 Antibody, FOXO2 Antibody, FKHRL1 Antibody
Family / Subfamily:	Transcription factor / not assigned-Transcription factor
Host	FOXO3 antibody was produced in Rabbit
Clonality:	Polyclonal
Isotype:	IgG
Immunogen Species:	FOXO3 / FOXO3A antibody was raised against Human
Antigen Type:	Synthetic phospho-peptide
Immunogen:	FOXO3 / FOXO3A antibody was raised against synthetic phosphopeptide (KLH coupled) corresponding to residues surrounding Thr24 of human FKHR.
Specificity:	Detects endogenous levels of FKHR (FKHRL1) only when activated by phosphorylation at Thr24 of FKHR or Thr32 of FKHRL1. Also reacts with phosphorylated AFX at Thr28. Does not react with FKHR family members phosphorylated at other sites. Species cross-reactivity: Human, mouse, rat.
Epitope:	pThr24/Thr32
Reactivity:	Human, Mouse, Rat
Purification:	Protein A purified
Presentation:	10 mM HEPES, pH 7.5, 150 mM sodium chloride, 0.1 mg/ml BSA, 50% glycerol. No preservative added.
Recommended Storage:	Long term: -20°C; Short term: +4°C. Avoid repeat freeze-thaw cycles.
Usage Summary:	Immunohistochemistry: LS-B3303 was validated for use in immunohistochemistry on a panel of 21 formalin-fixed, paraffin-embedded (FFPE) human tissues after heat induced antigen retrieval in pH 6.0 citrate buffer. After incubation with the primary antibody, slides were incubated with biotinylated secondary antibody, followed by alkaline phosphatase-streptavidin and chromogen. The stained slides were evaluated by a pathologist to confirm staining specificity. The optimal working concentration for LS-B3303 was determined to be 1:100.
Uses:	IHC - Paraffin (1:100), Western blot (1:1000), Immunoprecipitation (1:50), ELISA (Optimal dilution to be determined by the researcher)
Size:	50 µl

Immunohistochemistry Image:



Anti-FOXO3A antibody IHC of human prostate. Immunohistochemistry of formalin-fixed, paraffin-embedded tissue after heat-induced antigen retrieval. Antibody LS-B3303 dilution 1:100.

Requested From:

Japan

Laboratory Reagent For In Vitro Research Use Only

Not for resale without prior written consent from LifeSpan BioSciences, Inc.

Created on 9/23/2014

© 2014 LifeSpan BioSciences