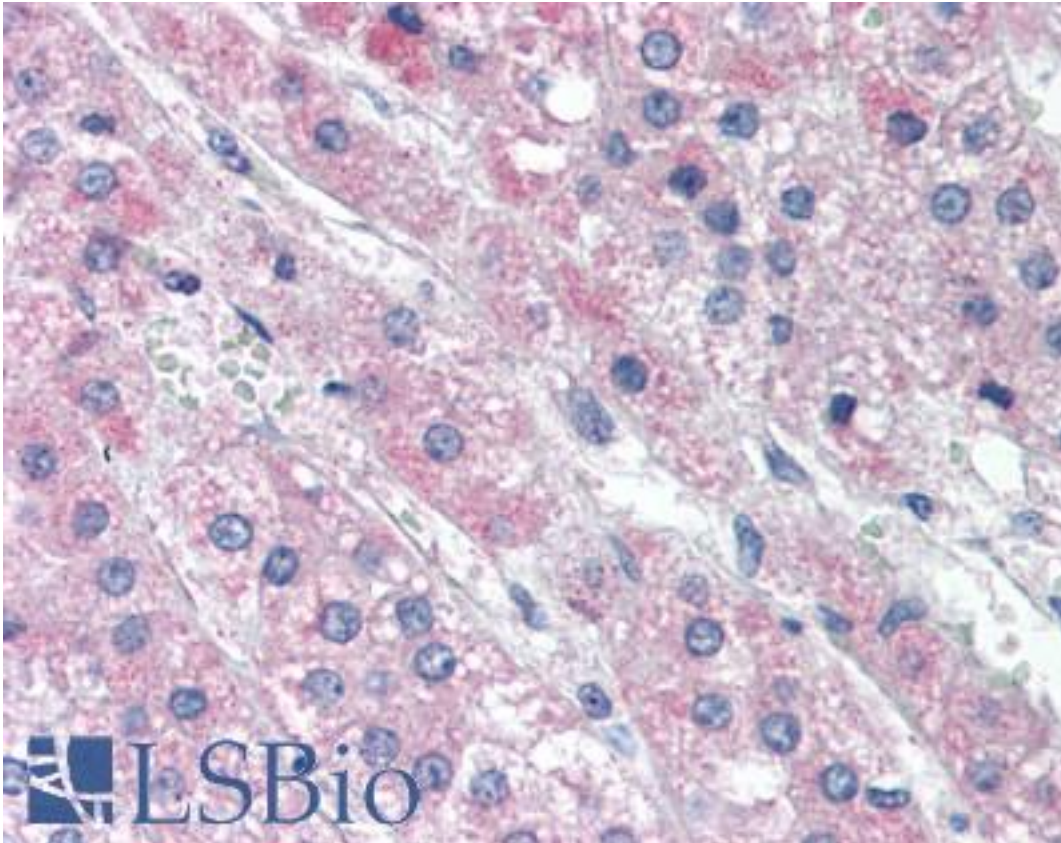


**Apg7 / ATG7 Rabbit anti-Human Polyclonal (aa558-569) Antibody - LS-B330 - LSBio**

<b>CatalogID:</b>	LS-B330
<b>Validation:</b>	This antibody replaces catalog number LS-C18991. It has been validated for use in the following assays: IHC.
<b>Target:</b>	autophagy related 7 (ATG7)
<b>Synonyms:</b>	ATG7 Antibody, Apg7 Antibody, APG7L Antibody, APG7-LIKE Antibody, Autophagy related 7 Antibody, Autophagy-related protein 7 Antibody, HAGP7 Antibody, GSA7 Antibody
<b>Host</b>	ATG7 antibody was produced in Rabbit
<b>Clonality:</b>	Polyclonal
<b>Immunogen Species:</b>	Apg7 / ATG7 antibody was raised against Human
<b>Antigen Type:</b>	Synthetic peptide
<b>Immunogen:</b>	Apg7 / ATG7 antibody was raised against synthetic peptide from human ATG7.
<b>Specificity:</b>	aa 558-569 of Human Apg7 protein.
<b>Epitope:</b>	aa558-569
<b>Reactivity:</b>	Human
<b>Purification:</b>	Immunoaffinity purified
<b>Presentation:</b>	0.02 M potassium phosphate, 0.15 M sodium chloride, pH 7.2, 0.01% sodium azide.
<b>Recommended Storage:</b>	+4°C or -20°C, Avoid repeated freezing and thawing.
<b>Usage Summary:</b>	Immunohistochemistry: LS-B330 was validated for use in immunohistochemistry on a panel of 21 formalin-fixed, paraffin-embedded (FFPE) human tissues after heat induced antigen retrieval in pH 6.0 citrate buffer. After incubation with the primary antibody, slides were incubated with biotinylated secondary antibody, followed by alkaline phosphatase-streptavidin and chromogen. The stained slides were evaluated by a pathologist to confirm staining specificity. The optimal working concentration for LS-B330 was determined to be 10 ug/ml.
<b>Uses:</b>	IHC - Paraffin (10 µg/ml), Immunofluorescence, Western blot (1:500 - 1:2000), ELISA (1:15000 - 1:75000) (Optimal dilution to be determined by the researcher)
<b>Size:</b>	50 µg
<b>Concentration:</b>	1 mg/ml

**Immunohistochemistry Image:**



Anti-ATG7 antibody IHC of human adrenal. Immunohistochemistry of formalin-fixed, paraffin-embedded tissue after heat-induced antigen retrieval. Antibody LS-B330 concentration 10 ug/ml.

**Requested From:**

Japan

Laboratory Reagent For In Vitro Research Use Only

Not for resale without prior written consent from LifeSpan BioSciences, Inc.

Created on 9/23/2014

© 2014 LifeSpan BioSciences