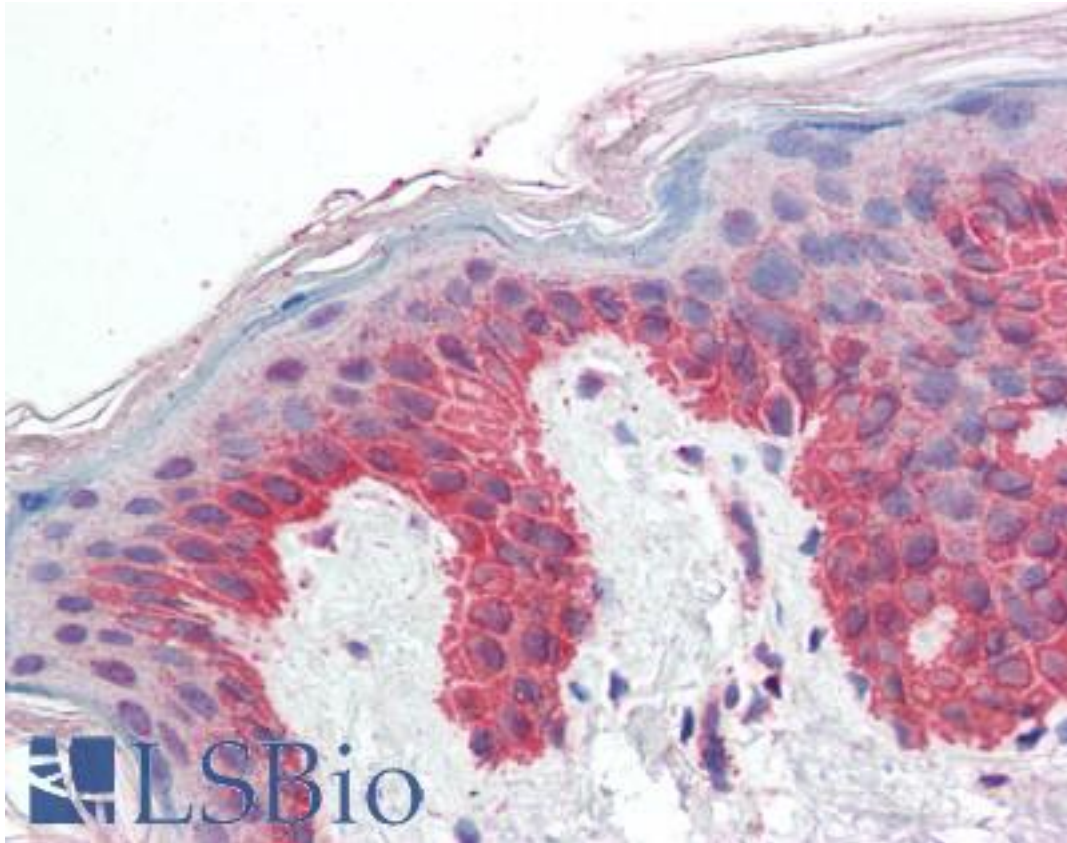


P4HA1 Goat anti-Human Polyclonal (Internal) Antibody - LS-B3291 - LSBio

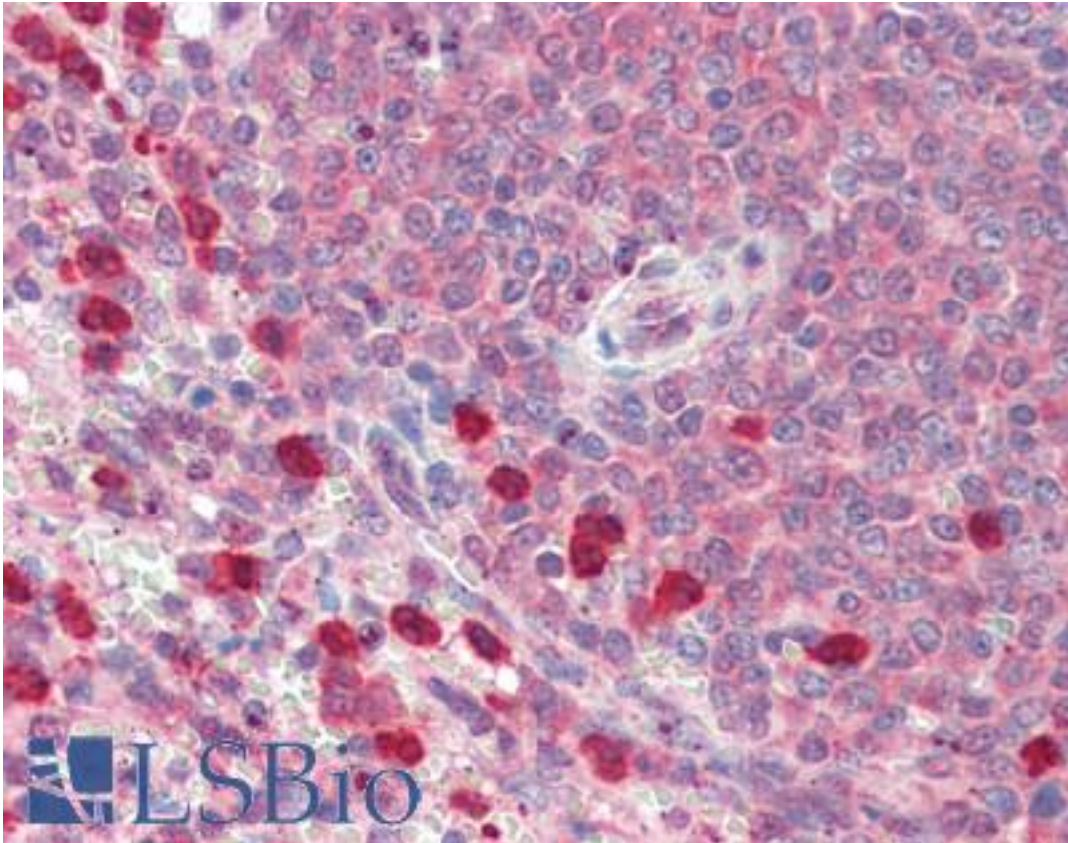
CatalogID:	LS-B3291
Validation:	This antibody replaces catalog number LS-C55223. It has been validated for use in the following assays: IHC-P.
Target:	prolyl 4-hydroxylase, alpha polypeptide I (P4HA1)
Synonyms:	P4HA1 Antibody, 4-PH alpha-1 Antibody, C-P4Halpha(I) Antibody, p4HA Antibody, p4HA1 Antibody
Host	P4HA1 antibody was produced in Goat
Clonality:	Polyclonal
Immunogen Species:	P4HA1 antibody was raised against Human
Antigen Type:	Synthetic peptide
Immunogen:	P4HA1 antibody was raised against synthetic peptide C-DFARKDEPDAFKE from an internal region of human P4HA1 (NP_000908.2; NP_001017962.1). Percent identity by BLAST analysis: Human, Gorilla, Orangutan, Gibbon, Marmoset, Elephant, Panda, Dog, Bat, Bovine, Horse, Rabbit, Pig, Turkey, Chicken, Platypus, Lizard (100%); Mouse, Rat, Hamster, Opossum, Salmon, Stickleback, Pufferfish, Zebrafish (92%).
Specificity:	Human P4HA1. This antibody is expected to recognise both reported isoforms (NP_000908.2 and NP_001017962.1).
Epitope:	Internal
Reactivity:	Human, Gorilla, Orangutan, Gibbon, Monkey, Bat, Bovine, Dog, Horse, Pig, Rabbit, Chicken
Predicted Reactivity:	Mouse, Rat, Hamster, Zebrafish
Purification:	Immunoaffinity purified
Presentation:	Tris-buffered saline, pH 7.3, 0.5% BSA, 0.02% sodium azide
Recommended Storage:	Store at -20°C. Minimize freezing and thawing.
Usage Summary:	Immunohistochemistry: LS-B3291 was validated for use in immunohistochemistry on a panel of 21 formalin-fixed, paraffin-embedded (FFPE) human tissues after heat induced antigen retrieval in pH 6.0 citrate buffer. After incubation with the primary antibody, slides were incubated with biotinylated secondary antibody, followed by alkaline phosphatase-streptavidin and chromogen. The stained slides were evaluated by a pathologist to confirm staining specificity. The optimal working concentration for LS-B3291 was determined to be 5 ug/ml.
Uses:	IHC - Paraffin (5 µg/ml), Western blot (1:32000) & (0.1 µg/ml), ELISA (1:32000) (Optimal dilution to be determined by the researcher)
Size:	50 µg
Concentration:	0.5 mg/ml

Immunohistochemistry Image:



Anti-P4HA1 antibody IHC of human skin. Immunohistochemistry of formalin-fixed, paraffin-embedded tissue after heat-induced antigen retrieval. Antibody LS-B3291 concentration 5 ug/ml.

Immunohistochemistry Image:



Anti-P4HA1 antibody IHC of human spleen. Immunohistochemistry of formalin-fixed, paraffin-embedded tissue after heat-induced antigen retrieval. Antibody LS-B3291 concentration 5 ug/ml.

Western Blot Image:



Antibody (0.2 ug/ml) staining of HEK293 cell lysate (35 ug protein in RIPA buffer). Primary incubation was 1 hour. Detected by chemiluminescence.

Requested From:

Japan

Laboratory Reagent For In Vitro Research Use Only

Not for resale without prior written consent from LifeSpan BioSciences, Inc.

Created on 9/23/2014

© 2014 LifeSpan BioSciences