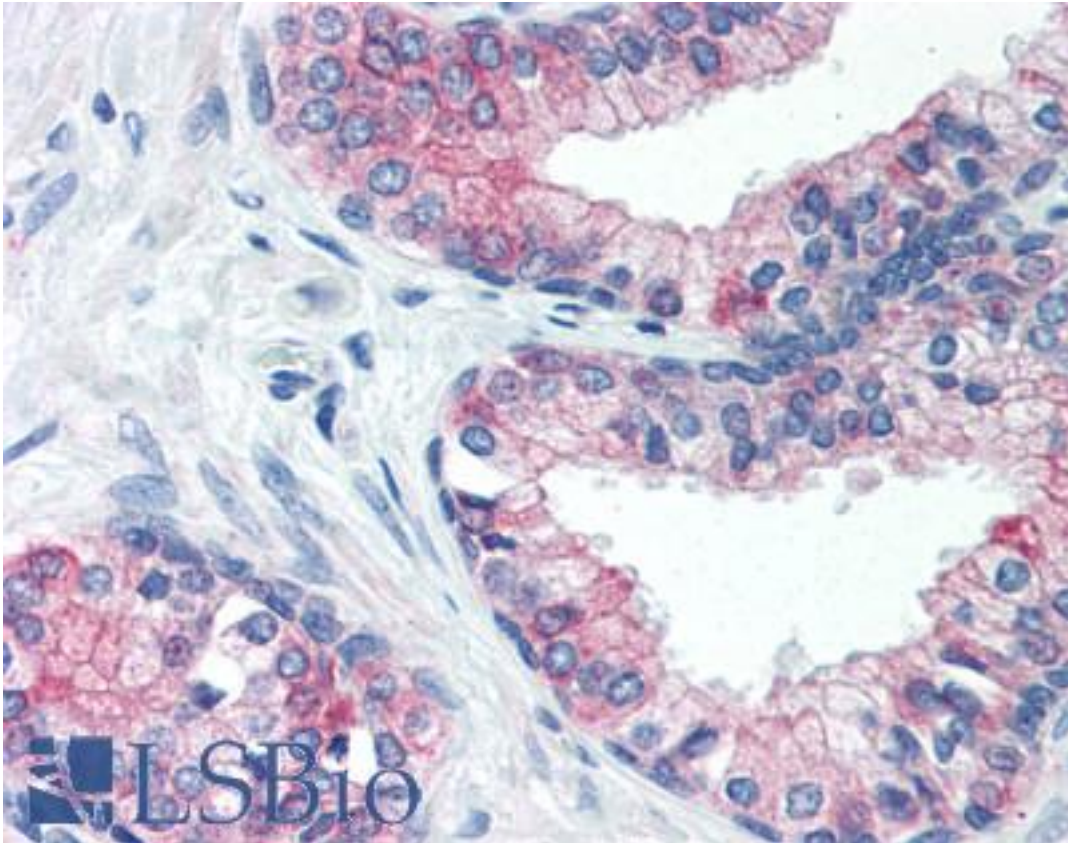


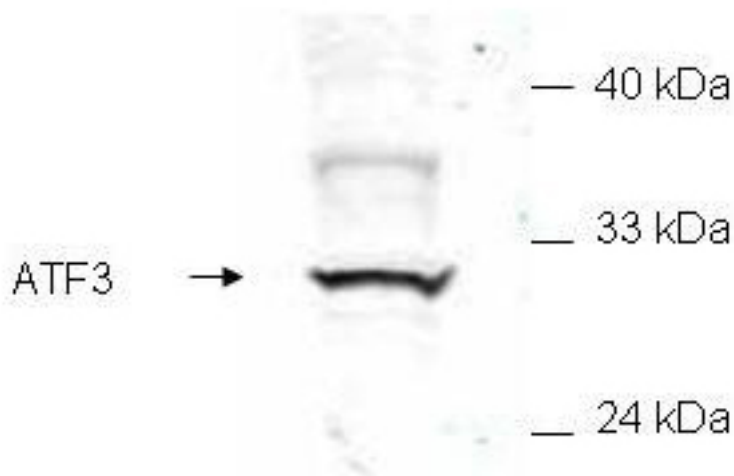
ATF3 Rabbit anti-Human Polyclonal (aa113-130) Antibody - LS-B329 - LSBio	
CatalogID:	LS-B329
Validation:	This antibody replaces catalog number LS-C18781. It has been validated for use in the following assays: IHC.
Target:	activating transcription factor 3 (ATF3)
Synonyms:	ATF3 Antibody
Family / Subfamily:	Transcription factor / not assigned-Transcription factor
Host	ATF3 antibody was produced in Rabbit
Clonality:	Polyclonal
Immunogen Species:	ATF3 antibody was raised against Human
Antigen Type:	Synthetic peptide
Immunogen:	ATF3 antibody was raised against synthetic peptide from human ATF3.
Specificity:	This antibody was produced from a aa 113-130 of human ATF3.
Epitope:	aa113-130
Reactivity:	Human
Purification:	Affinity purified
Presentation:	0.02 M Potassium Phosphate, 0.15 M Sodium Chloride, pH 7.2 with 0.01% (w/v) Sodium Azide
Recommended Storage:	+4°C or -20°C, Avoid repeated freezing and thawing.
Usage Summary:	Immunohistochemistry: LS-B329 was validated for use in immunohistochemistry on a panel of 21 formalin-fixed, paraffin-embedded (FFPE) human tissues after heat induced antigen retrieval in pH 6.0 citrate buffer. After incubation with the primary antibody, slides were incubated with biotinylated secondary antibody, followed by alkaline phosphatase-streptavidin and chromogen. The stained slides were evaluated by a pathologist to confirm staining specificity. The optimal working concentration for LS-B329 was determined to be 5 ug/ml.
Uses:	IHC - Paraffin (5 µg/ml), Western blot (1:200), ELISA (Optimal dilution to be determined by the researcher)
Size:	50 µg
Concentration:	1 mg/ml

Immunohistochemistry Image:



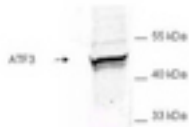
Anti-ATF-3 antibody IHC of human prostate. Immunohistochemistry of formalin-fixed, paraffin-embedded tissue after heat-induced antigen retrieval. Antibody LS-B329 concentration 5 ug/ml.

Western Blot Image:



Anti-ATF3 Antibody - Western Blot. Western blot of mammalian whole cell extract transfected with HA epitope tagged human ATF3. Affinity purified anti-ATF3 detects a band ~31 kD corresponding to recombinant human ATF3. Immunostaining using anti-HA epitope tag antibody confirms the composition of the recombinant band (not shown). The protein was transferred to nitrocellulose in 30 minutes using standard methods. After blocking with 5% goat serum and 0.5% non-fat milk in PBS, the membrane was probed with the primary antibody diluted 1:200 in 0.2X blocking buffer in PBS overnight at 4C. Reaction was followed by washes and reaction with a 1:5000 dilution of IRDye800 conjugated Gt-a-Rabbit IgG [H&L] (code for 30 min at room temperature. LICORs Odyssey Infrared Imaging System was used to scan and process the image. Other detection systems will yield similar results.

Western Blot Image:



Anti-ATF3 Antibody - Western Blot. Western blot of E. coli whole cell extract transfected with GST epitope tagged human ATF3. Affinity purified anti-ATF3 detects a band ~48 kD corresponding to recombinant human ATF3. Immunostaining using anti-GST epitope tag antibody confirms the composition of the recombinant band (not shown). The protein was transferred to nitrocellulose using standard methods. After blocking with 5% goat serum and 0.5% non fat milk in PBS, the membrane was probed with the primary antibody diluted 1:200 in 0.2X blocking buffer in PBS overnight at 4°C. Reaction was followed by washes and reaction with a 1:5000 dilution of IRDye800 conjugated Gt-a-Rabbit IgG [H&L] (code for 30 min at room temperature. LICORs Odyssey Infrared Imaging System was used to scan and process the image. Other detection systems will yield similar results.

Requested From:

Japan

Laboratory Reagent For In Vitro Research Use Only

Not for resale without prior written consent from LifeSpan BioSciences, Inc.

Created on 9/23/2014

© 2014 LifeSpan BioSciences