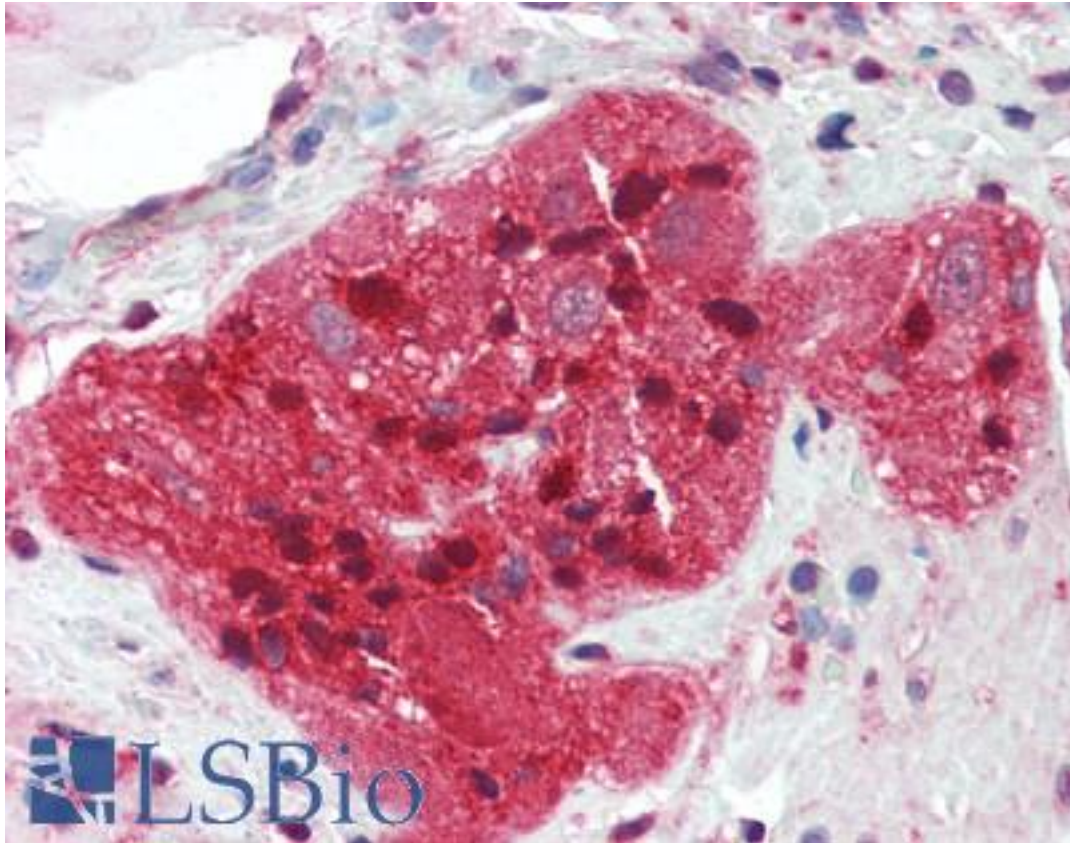


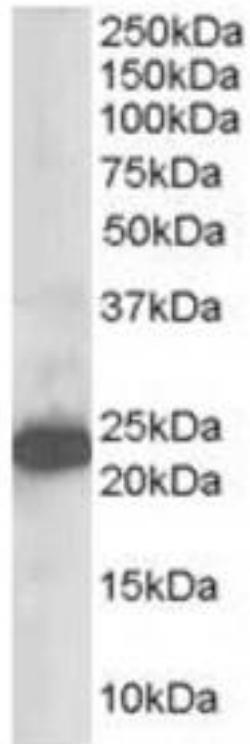
SCG10 / STMN2 Goat anti-Human Polyclonal Antibody - LS-B3285 - LSBio	
<b>CatalogID:</b>	LS-B3285
<b>Validation:</b>	This antibody replaces catalog number LS-C34639. It has been validated for use in the following assays: IHC-P.
<b>Target:</b>	stathmin-like 2 (STMN2)
<b>Synonyms:</b>	STMN2 Antibody, SCGN10 Antibody, SCG10 Antibody, Stathmin-like 2 Antibody, Protein SCG10 Antibody, Stathmin-2 Antibody
<b>Host</b>	STMN2 antibody was produced in Goat
<b>Clonality:</b>	Polyclonal
<b>Immunogen Species:</b>	SCG10 / STMN2 antibody was raised against Human
<b>Antigen Type:</b>	Synthetic peptide
<b>Immunogen:</b>	SCG10 / STMN2 antibody was raised against synthetic peptide AKTAMAYKEK-C from the N-terminus of human STMN2 (NP_008960.2). Percent identity by BLAST analysis: Human, Marmoset, Mouse, Rat, Hamster, Elephant, Dog, Bovine, Horse, Rabbit, Turkey, Chicken (100%); Xenopus, Stickleback, Zebrafish (90%); Water flea, Poplar, Arabidopsis (80%).
<b>Specificity:</b>	Human STMN2.
<b>Reactivity:</b>	Human, Monkey, Mouse, Rat, Bovine, Dog, Hamster, Horse, Rabbit, Chicken
<b>Predicted Reactivity:</b>	Xenopus, Zebrafish
<b>Purification:</b>	Immunoaffinity purified
<b>Presentation:</b>	Tris-buffered saline, pH 7.3, 0.5% BSA, 0.02% sodium azide
<b>Recommended Storage:</b>	Short term 4°C, long term aliquot and store at -20°C, avoid freeze thaw cycles.
<b>Usage Summary:</b>	Immunohistochemistry: LS-B3285 was validated for use in immunohistochemistry on a panel of 21 formalin-fixed, paraffin-embedded (FFPE) human tissues after heat induced antigen retrieval in pH 6.0 citrate buffer. After incubation with the primary antibody, slides were incubated with biotinylated secondary antibody, followed by alkaline phosphatase-streptavidin and chromogen. The stained slides were evaluated by a pathologist to confirm staining specificity. The optimal working concentration for LS-B3285 was determined to be 5 ug/ml.
<b>Uses:</b>	IHC - Paraffin (5 µg/ml), Western blot (0.1 - 1 µg/ml), ELISA (1:32000) (Optimal dilution to be determined by the researcher)
<b>Size:</b>	50 µg
<b>Concentration:</b>	0.5 mg/ml

**Immunohistochemistry Image:**



Anti-STMN2 antibody IHC of human small intestine, myenteric plexus. Immunohistochemistry of formalin-fixed, paraffin-embedded tissue after heat-induced antigen retrieval. Antibody LS-B3285 concentration 5 ug/ml.

**Western Blot Image:**



Western analysis (1 ug/ml) of Human Brain lysate (RIPA buffer, 35 ug total protein per lane).  
Primary incubated for 1 hour. Detected using chemiluminescence.

**Requested From:**

Japan

Laboratory Reagent For In Vitro Research Use Only

Not for resale without prior written consent from LifeSpan BioSciences, Inc.

Created on 9/23/2014

© 2014 LifeSpan BioSciences