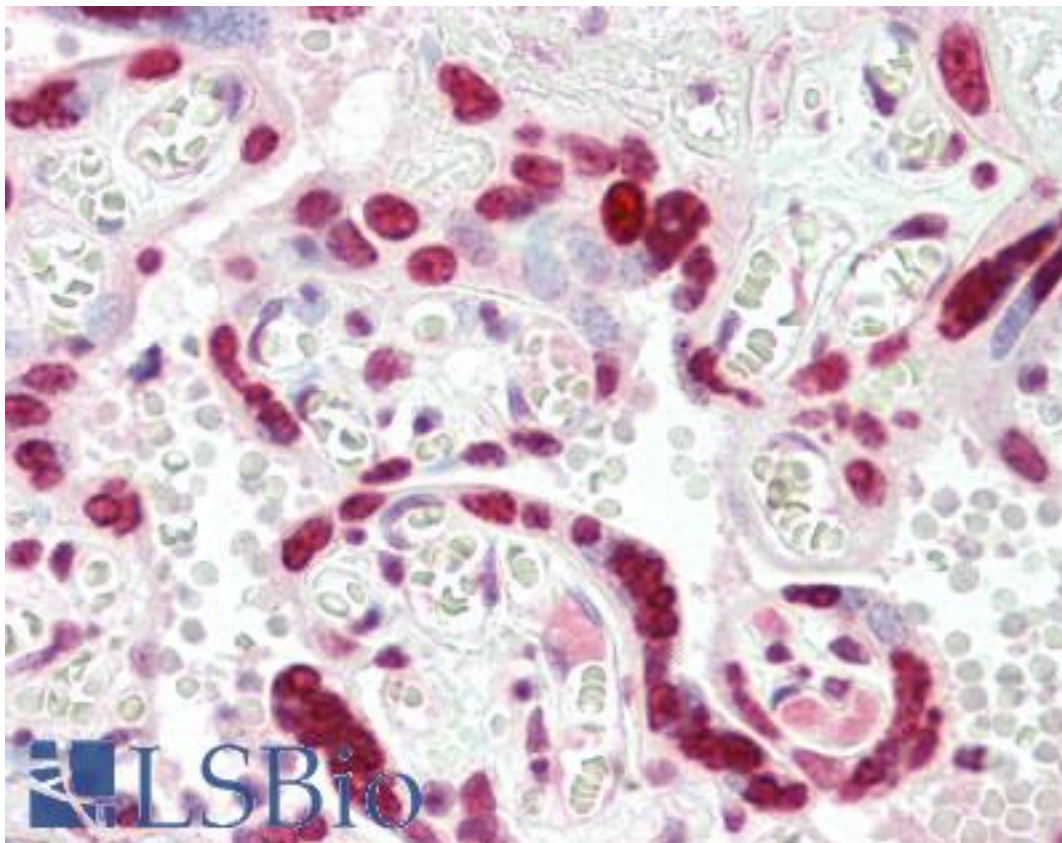


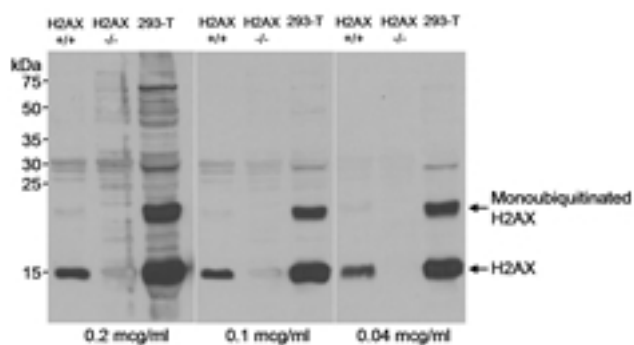
H2AX Rabbit anti-Human Polyclonal (C-Terminus) Antibody - LS-B3282 - LSBio	
<b>CatalogID:</b>	LS-B3282
<b>Validation:</b>	This antibody replaces catalog number LS-C43058. It has been validated for use in the following assays: IHC-P.
<b>Target:</b>	H2A histone family, member X (H2AFX)
<b>Synonyms:</b>	H2AFX Antibody, H2AX Antibody, Histone H2A.x Antibody, H2A.X Antibody, H2A histone family, member X Antibody, H2AX histone Antibody
<b>Host</b>	H2AFX antibody was produced in Rabbit
<b>Clonality:</b>	Polyclonal
<b>Isotype:</b>	IgG
<b>Immunogen Species:</b>	H2AX antibody was raised against Human
<b>Antigen Type:</b>	Synthetic peptide
<b>Immunogen:</b>	H2AX antibody was raised against synthetic peptide corresponding to a region within the C-terminus of human H2AX.
<b>Specificity:</b>	Specific for human histone H2AX. H2AX comprises approximately 2-25% of the histone H2A pool in mammalian cells. The extended C-terminal tail of H2AX contains a serine (Ser139) embedded in an conserved SQE motif, which is rapidly phosphorylated at sites of double strand breaks and stalled replication forks. Phosphorylated H2AX may serve to recruit other repair proteins to the site of DNA damage. H2AX has been implicated in both homologous recombination and nonhomologous end joining DNA repair pathways
<b>Epitope:</b>	C-Terminus
<b>Reactivity:</b>	Human
<b>Purification:</b>	Immunoaffinity purified
<b>Presentation:</b>	Tris-citrate/phosphate, 0.09% sodium azide.
<b>Recommended Storage:</b>	+4°C or -20°C, Avoid repeated freezing and thawing. Store undiluted.
<b>Usage Summary:</b>	Immunohistochemistry: LS-B3282 was validated for use in immunohistochemistry on a panel of 21 formalin-fixed, paraffin-embedded (FFPE) human tissues after heat induced antigen retrieval in pH 6.0 citrate buffer. After incubation with the primary antibody, slides were incubated with biotinylated secondary antibody, followed by alkaline phosphatase-streptavidin and chromogen. The stained slides were evaluated by a pathologist to confirm staining specificity. The optimal working concentration for LS-B3282 was determined to be 2.5 ug/ml.
<b>Uses:</b>	IHC - Paraffin (2.5 µg/ml), Immunofluorescence (1:400 - 1:800), Western blot (Optimal dilution to be determined by the researcher)
<b>Size:</b>	50 µg
<b>Concentration:</b>	1 mg/ml

**Immunohistochemistry Image:**



Anti-H2AX antibody IHC of human placenta. Immunohistochemistry of formalin-fixed, paraffin-embedded tissue after heat-induced antigen retrieval. Antibody LS-B3282 concentration 5 ug/ml.

**Western Blot Image:**



Detection of human and mouse histone H2AX in nuclear extracts from human 293T and wild type (+/+) or H2AX knockout (-/-) mouse embryonic fibroblasts by Western blotting using Rabbit anti-H2AX (LS-B3282).

Requested From:

Japan

Laboratory Reagent For In Vitro Research Use Only

Not for resale without prior written consent from LifeSpan BioSciences, Inc.

Created on 9/23/2014

© 2014 LifeSpan BioSciences