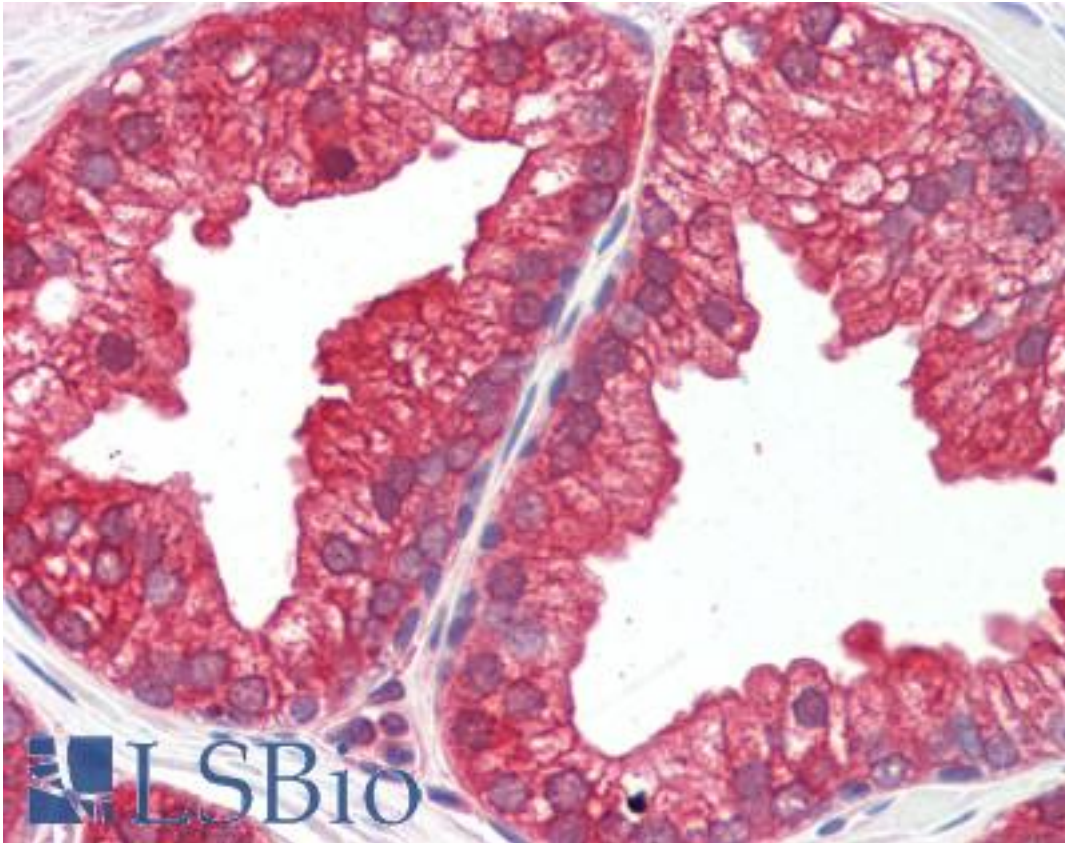


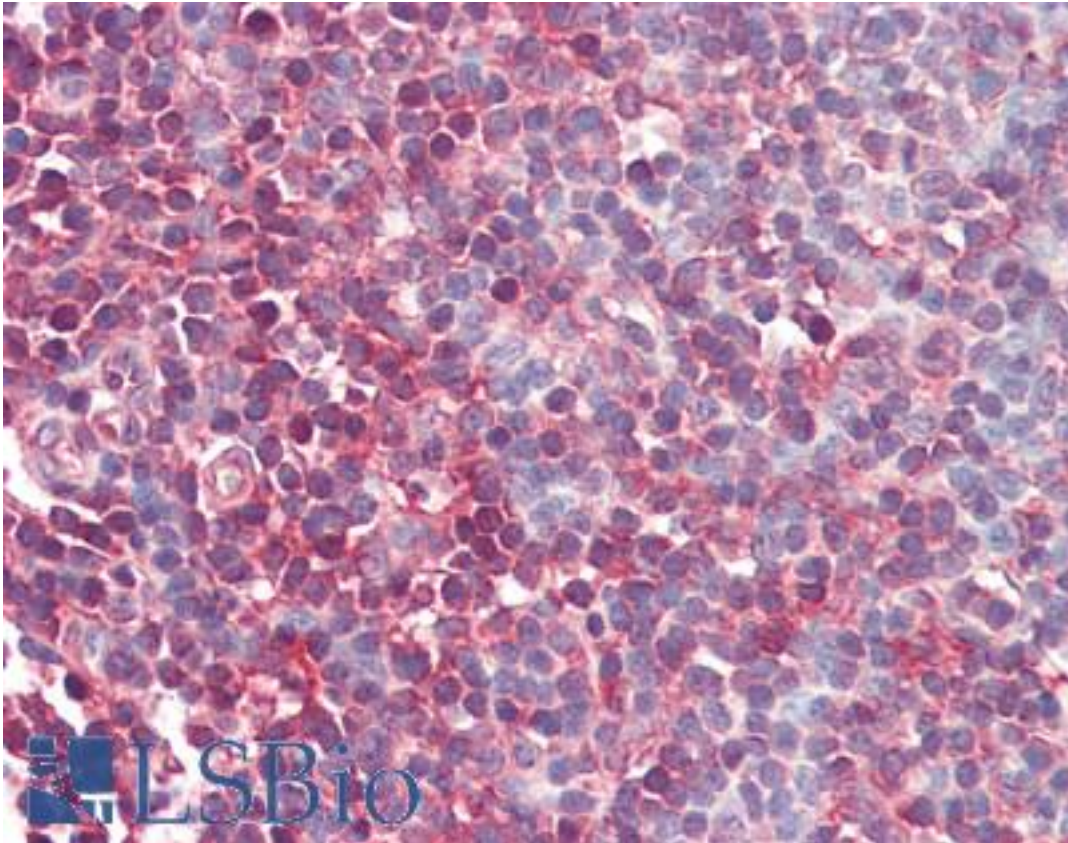
MAP2K1 / MEK1 Rabbit anti-Human Polyclonal (N-Terminus) Antibody - LS-B3271 - LSBio	
CatalogID:	LS-B3271
Validation:	This antibody replaces catalog number LS-C63170. It has been validated for use in the following assays: IHC-P.
Target:	mitogen-activated protein kinase kinase 1 (MAP2K1)
Synonyms:	MAP2K1 Antibody, ERK activator kinase 1 Antibody, MAPK/ERK kinase 1 Antibody, MAPKK 1 Antibody, MKK1 Antibody, PRKMK1 Antibody, MEK 1 Antibody, MAP kinase kinase 1 Antibody, MAPKK1 Antibody, MEK1 Antibody
Family / Subfamily:	Protein Kinase / MAP2K
Host	MAP2K1 antibody was produced in Rabbit
Clonality:	Polyclonal
Immunogen Species:	MAP2K1 / MEK1 antibody was raised against Human
Antigen Type:	Synthetic peptide - KLH conjugated
Immunogen:	MAP2K1 / MEK1 antibody was raised against synthetic peptide derived from sequence near the amino-terminus of human MEK1, conjugated to KLH.
Epitope:	N-Terminus
Reactivity:	Human, Mouse, Rat, Xenopus
Purification:	Protein A purified
Presentation:	PBS, pH 7.2, 50% glycerol, 0.09% azide.
Recommended Storage:	Long term: -20°C; Short term: +4°C. Avoid repeat freeze-thaw cycles.
Usage Summary:	Immunohistochemistry: LS-B3271 was validated for use in immunohistochemistry on a panel of 21 formalin-fixed, paraffin-embedded (FFPE) human tissues after heat induced antigen retrieval in pH 6.0 citrate buffer. After incubation with the primary antibody, slides were incubated with biotinylated secondary antibody, followed by alkaline phosphatase-streptavidin and chromogen. The stained slides were evaluated by a pathologist to confirm staining specificity. The optimal working concentration for LS-B3271 was determined to be 10 ug/ml.
Uses:	IHC - Paraffin (10 µg/ml), Immunofluorescence, Western blot (1 µg/ml) (Optimal dilution to be determined by the researcher)
Size:	50 µg
Concentration:	1 mg/ml

Immunohistochemistry Image:



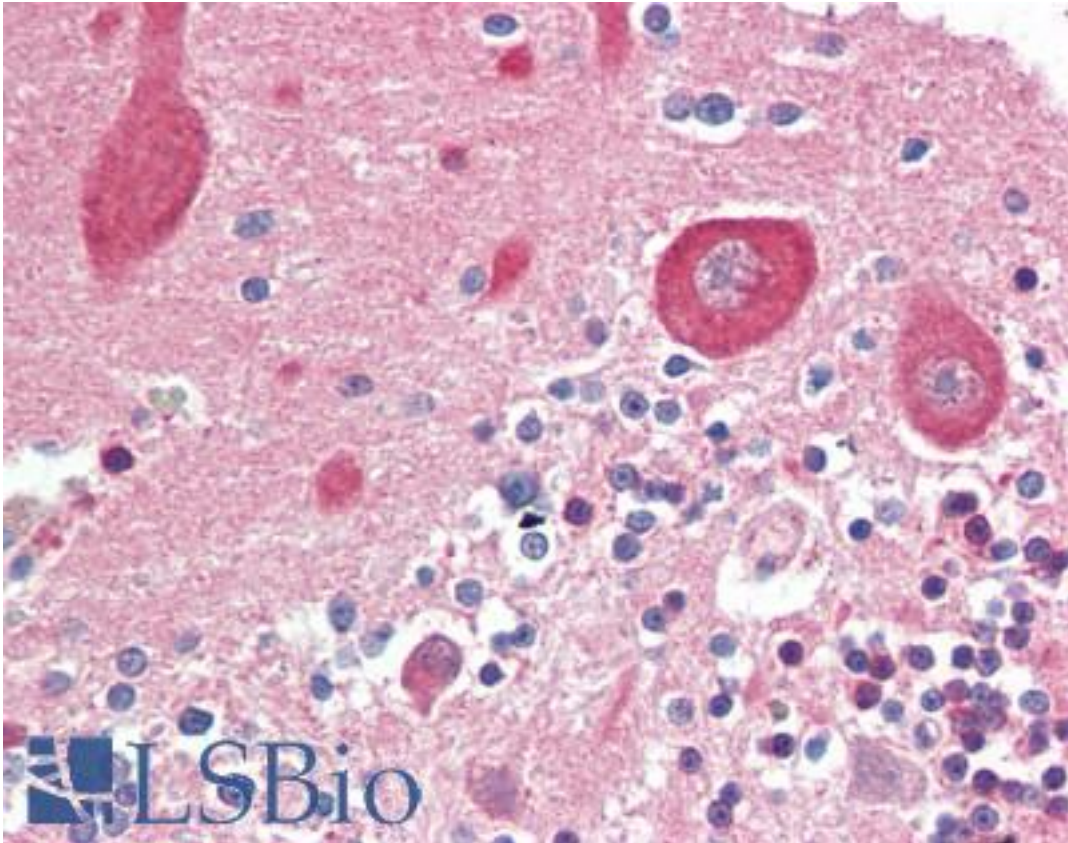
Anti-MAP2K1 / MEK1 antibody IHC of human prostate. Immunohistochemistry of formalin-fixed, paraffin-embedded tissue after heat-induced antigen retrieval. Antibody LS-B3271 concentration 10 ug/ml.

Immunohistochemistry Image:



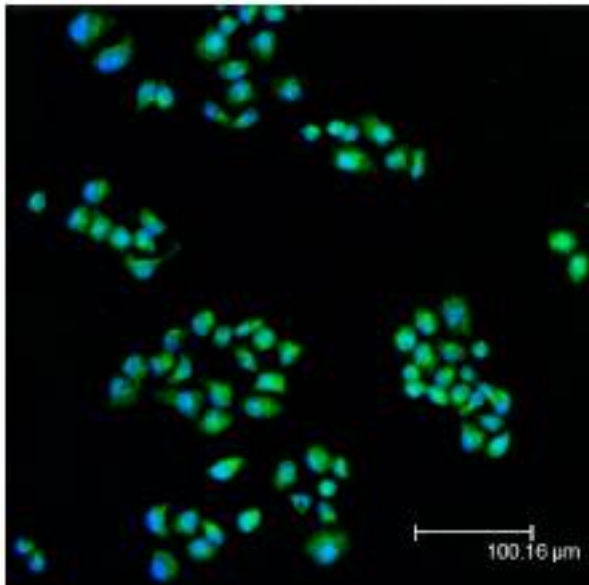
Anti-MAP2K1 / MEK1 antibody IHC of human tonsil. Immunohistochemistry of formalin-fixed, paraffin-embedded tissue after heat-induced antigen retrieval. Antibody LS-B3271 concentration 10 ug/ml.

Immunohistochemistry Image:



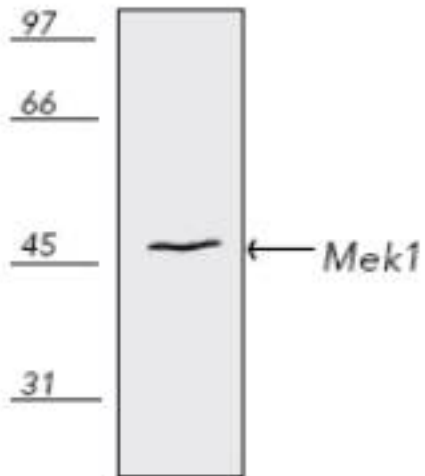
Anti-MAP2K1 / MEK1 antibody IHC of human brain, cerebellum. Immunohistochemistry of formalin-fixed, paraffin-embedded tissue after heat-induced antigen retrieval. Antibody LS-B3271 concentration 10 ug/ml.

Immunofluorescence Image:



Confocal immunofluorescent staining of HeLa cells using LS-B3271(green); nuclei are stained in blue pseudocolor using DRAQ5.

Western Blot Image:



Western blot of human thymus HS67 cell lysate.

Requested From:

Japan

Laboratory Reagent For In Vitro Research Use Only

Not for resale without prior written consent from LifeSpan BioSciences, Inc.

Created on 9/23/2014

© 2014 LifeSpan BioSciences