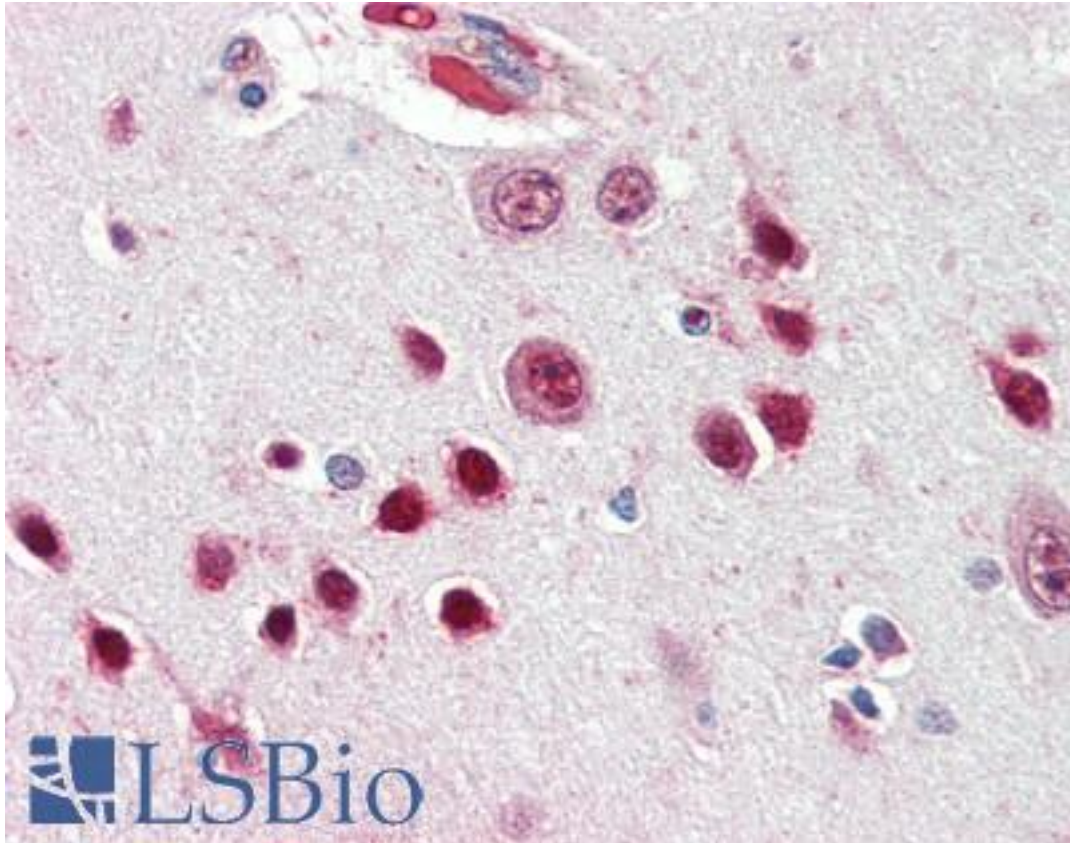


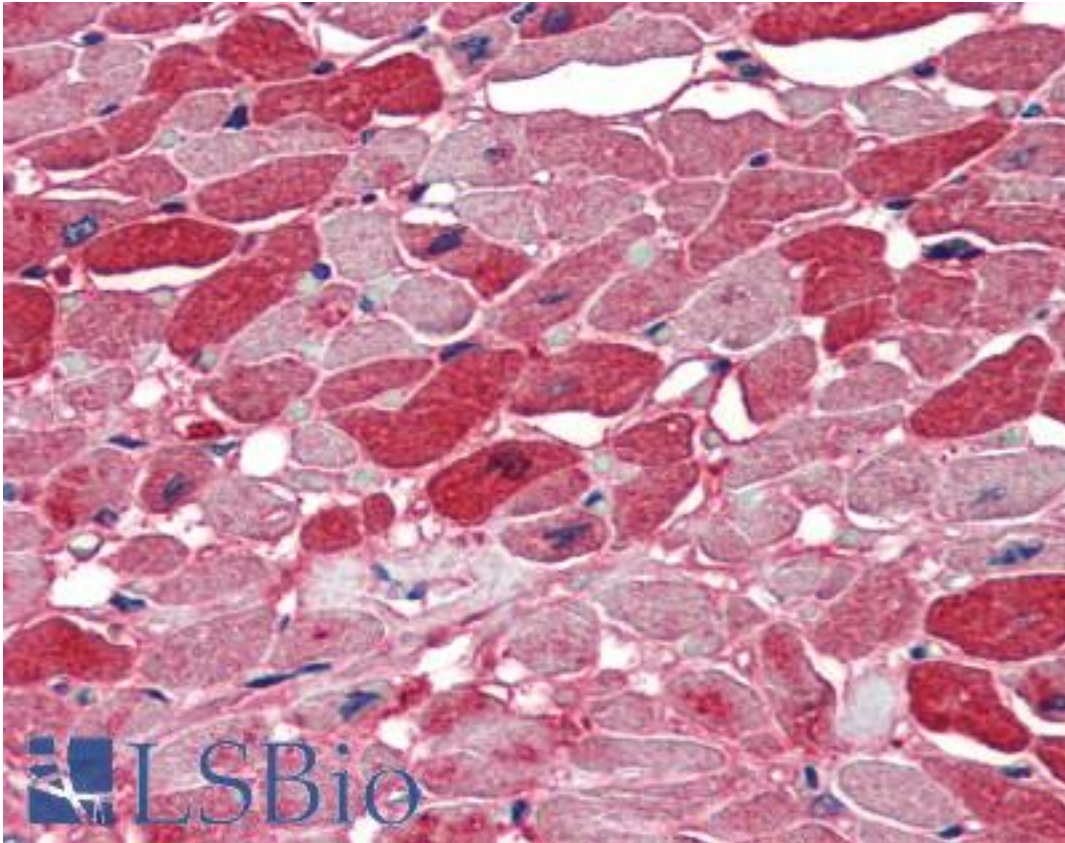
NOVA1 Goat anti-Human Polyclonal (Internal) Antibody - LS-B3259 - LSBio	
CatalogID:	LS-B3259
Validation:	This antibody replaces catalog number LS-C61773. It has been validated for use in the following assays: IHC-P.
Target:	neuro-oncological ventral antigen 1 (NOVA1)
Synonyms:	NOVA1 Antibody, Nova-1 Antibody, Onconeural ventral antigen 1 Antibody, RNA-binding protein Nova-1 Antibody, Paraneoplastic Ri antigen Antibody
Host	NOVA1 antibody was produced in Goat
Clonality:	Polyclonal
Immunogen Species:	NOVA1 antibody was raised against Human
Antigen Type:	Synthetic peptide
Immunogen:	NOVA1 antibody was raised against synthetic peptide C-REMPQNVAKTEPVS from an internal region of human NOVA1 (NP_002506.2 ; NP_006480.2 ; NP_006482.1). Percent identity by BLAST analysis: Human, Gorilla, Gibbon, Monkey, Marmoset, Mouse, Rat, Elephant, Panda, Dog, Bat, Bovine, Rabbit, Pig, Opossum, Turkey, Chicken, Platypus, Lizard, Xenopus (100%); Horse (86%).
Specificity:	Human NOVA1. This antibody is expected to recognise all three reported isoforms (NP_002506.2 ; NP_006480.2 ; NP_006482.1)
Epitope:	Internal
Reactivity:	Human, Gorilla, Gibbon, Monkey, Mouse, Rat, Bat, Bovine, Dog, Pig, Rabbit, Chicken, Xenopus
Purification:	Immunoaffinity purified
Presentation:	Tris-buffered saline, pH 7.3, 0.5% BSA, 0.02% sodium azide
Recommended Storage:	Store at -20°C. Minimize freezing and thawing.
Usage Summary:	Immunohistochemistry: LS-B3259 was validated for use in immunohistochemistry on a panel of 21 formalin-fixed, paraffin-embedded (FFPE) human tissues after heat induced antigen retrieval in pH 6.0 citrate buffer. After incubation with the primary antibody, slides were incubated with biotinylated secondary antibody, followed by alkaline phosphatase-streptavidin and chromogen. The stained slides were evaluated by a pathologist to confirm staining specificity. The optimal working concentration for LS-B3259 was determined to be 2.5 ug/ml.
Uses:	IHC - Paraffin (2.5 µg/ml), Western blot (0.01 - 0.03 µg/ml), ELISA (1:64000) (Optimal dilution to be determined by the researcher)
Size:	50 µg
Concentration:	0.5 mg/ml

Immunohistochemistry Image:



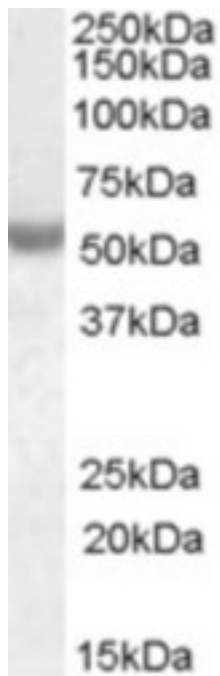
Anti-NOVA1 antibody IHC of human brain, cortex. Immunohistochemistry of formalin-fixed, paraffin-embedded tissue after heat-induced antigen retrieval. Antibody LS-B3259 concentration 5 ug/ml.

Immunohistochemistry Image:



Anti-NOVA1 antibody IHC of human heart. Immunohistochemistry of formalin-fixed, paraffin-embedded tissue after heat-induced antigen retrieval. Antibody LS-B3259 concentration 5 ug/ml.

Western Blot Image:



Antibody (0.01 ug/ml) staining of Human Breast Cancer lysate (35 ug protein in RIPA buffer).
Primary incubation was 1 hour. Detected by chemiluminescence.

Requested From:

Japan

Laboratory Reagent For In Vitro Research Use Only

Not for resale without prior written consent from LifeSpan BioSciences, Inc.

Created on 9/23/2014

© 2014 LifeSpan BioSciences