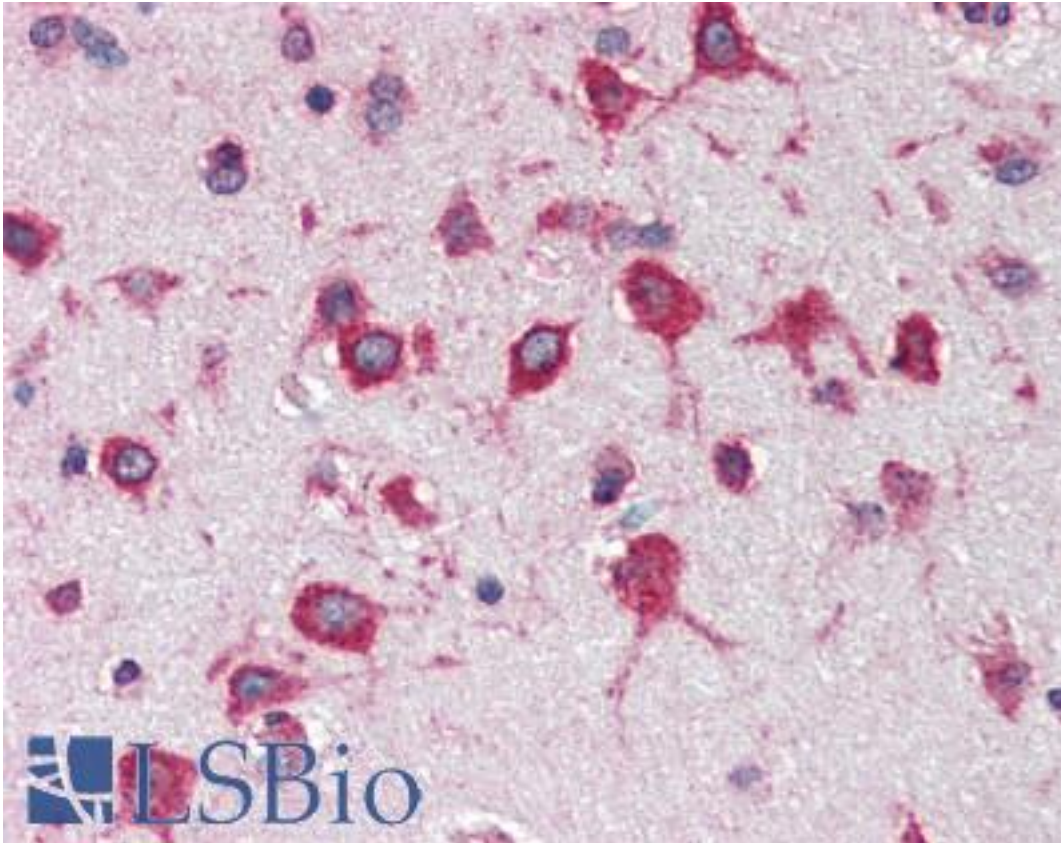


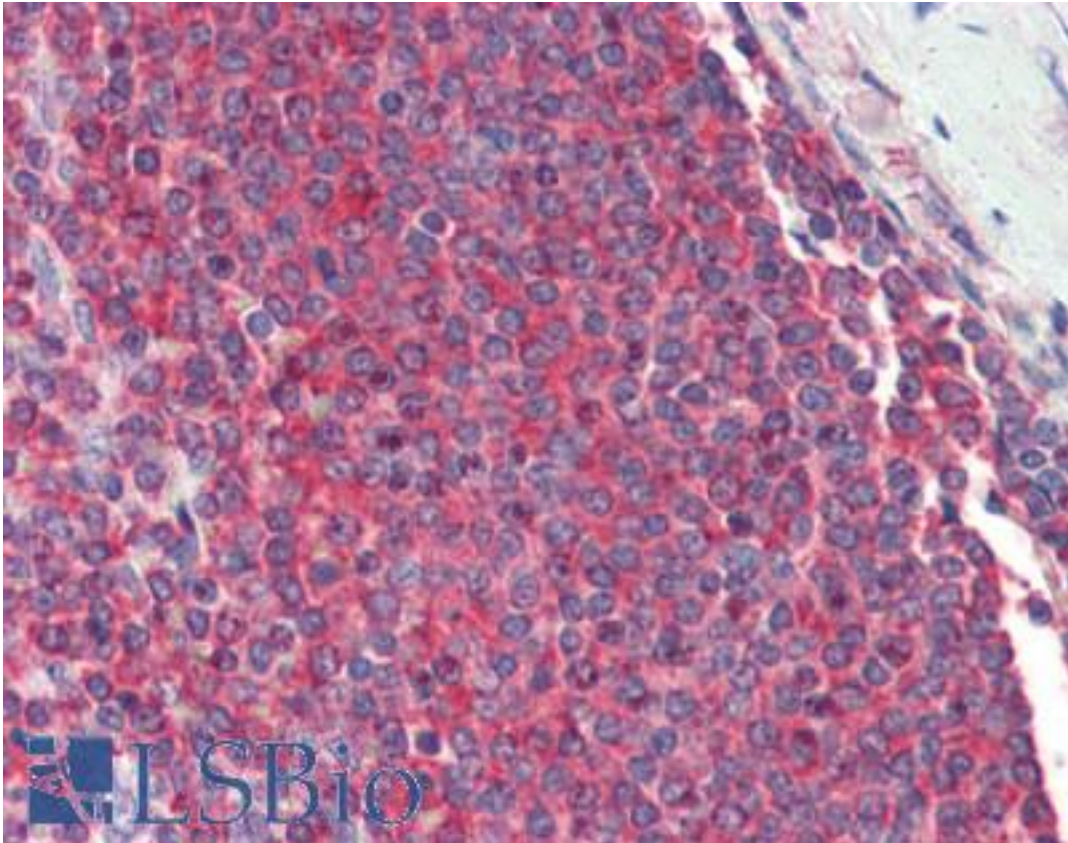
RPL8 / L8 Goat anti-Human Polyclonal (Internal) Antibody - LS-B3254 - LSBio	
<b>CatalogID:</b>	LS-B3254
<b>Validation:</b>	This antibody replaces catalog number LS-C55394. It has been validated for use in the following assays: IHC-P.
<b>Target:</b>	ribosomal protein L8 (RPL8)
<b>Synonyms:</b>	RPL8 Antibody, 60S ribosomal protein L8 Antibody, Ribosomal protein L8 Antibody, L8 Antibody
<b>Host</b>	RPL8 antibody was produced in Goat
<b>Clonality:</b>	Polyclonal
<b>Immunogen Species:</b>	RPL8 / L8 antibody was raised against Human
<b>Antigen Type:</b>	Synthetic peptide
<b>Immunogen:</b>	RPL8 / L8 antibody was raised against synthetic peptide KAGRAYHKYKAKRNC from an internal region of human RPL8 (NP_000964.1; NP_150644.1). Percent identity by BLAST analysis: Human, Gorilla, Orangutan, Gibbon, Marmoset, Mouse, Rat, Hamster, Elephant, Panda, Dog, Bat, Bovine, Rabbit, Pig, Opossum, Turkey, Chicken, Platypus, Xenopus, Smelt, Stickleback, Medaka, Pufferfish, Zebrafish, Sea anemone, Ant, Water flea (100%); Catfish, Mosquito (93%).
<b>Specificity:</b>	Human RPL8. The reported variants represent identical protein (NP_000964.1 and NP_150644.1).
<b>Epitope:</b>	Internal
<b>Reactivity:</b>	Human, Gorilla, Orangutan, Gibbon, Monkey, Mouse, Rat, Bat, Bovine, Dog, Hamster, Pig, Rabbit, Chicken, Xenopus, Zebrafish
<b>Predicted Reactivity:</b>	Insect
<b>Purification:</b>	Immunoaffinity purified
<b>Presentation:</b>	Tris-buffered saline, pH 7.3, 0.5% BSA, 0.02% sodium azide
<b>Recommended Storage:</b>	Store at -20°C. Minimize freezing and thawing.
<b>Usage Summary:</b>	Immunohistochemistry: LS-B3254 was validated for use in immunohistochemistry on a panel of 21 formalin-fixed, paraffin-embedded (FFPE) human tissues after heat induced antigen retrieval in pH 6.0 citrate buffer. After incubation with the primary antibody, slides were incubated with biotinylated secondary antibody, followed by alkaline phosphatase-streptavidin and chromogen. The stained slides were evaluated by a pathologist to confirm staining specificity. The optimal working concentration for LS-B3254 was determined to be 2.5 µg/ml.
<b>Uses:</b>	IHC - Paraffin (2.5 µg/ml), Western blot (1:128000) & (0.01 - 0.03 µg/ml), ELISA (1:128000) (Optimal dilution to be determined by the researcher)
<b>Size:</b>	50 µg
<b>Concentration:</b>	0.5 mg/ml

**Immunohistochemistry Image:**



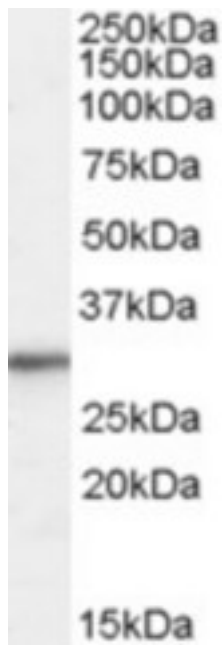
Anti-RPL8 antibody IHC of human brain, cortex. Immunohistochemistry of formalin-fixed, paraffin-embedded tissue after heat-induced antigen retrieval. Antibody LS-B3254 concentration 5 ug/ml.

**Immunohistochemistry Image:**



Anti-RPL8 antibody IHC of human spleen. Immunohistochemistry of formalin-fixed, paraffin-embedded tissue after heat-induced antigen retrieval. Antibody LS-B3254 concentration 5 ug/ml.

**Western Blot Image:**



Antibody (0.01 ug/ml) staining of HepG2 cell lysate (35 ug protein in RIPA buffer). Primary incubation was 1 hour. Detected by chemiluminescence.

**Requested From:**

Japan

Laboratory Reagent For In Vitro Research Use Only

Not for resale without prior written consent from LifeSpan BioSciences, Inc.

Created on 9/23/2014

© 2014 LifeSpan BioSciences