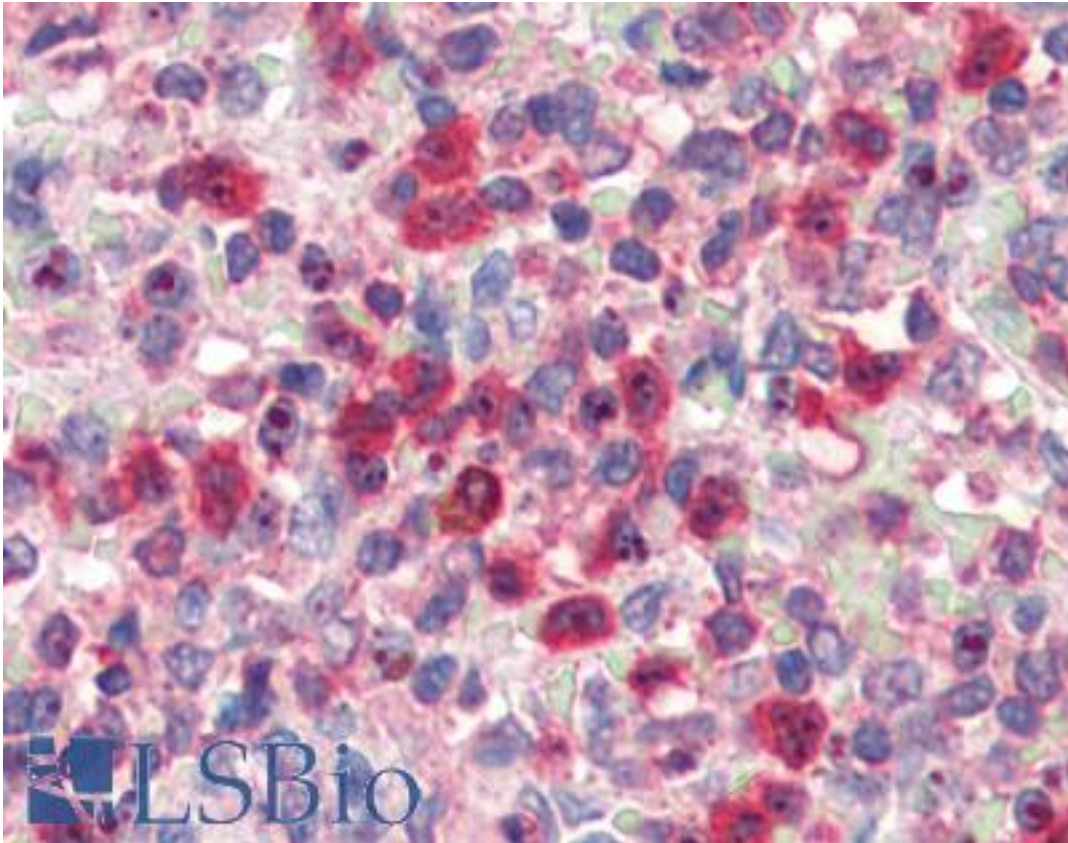


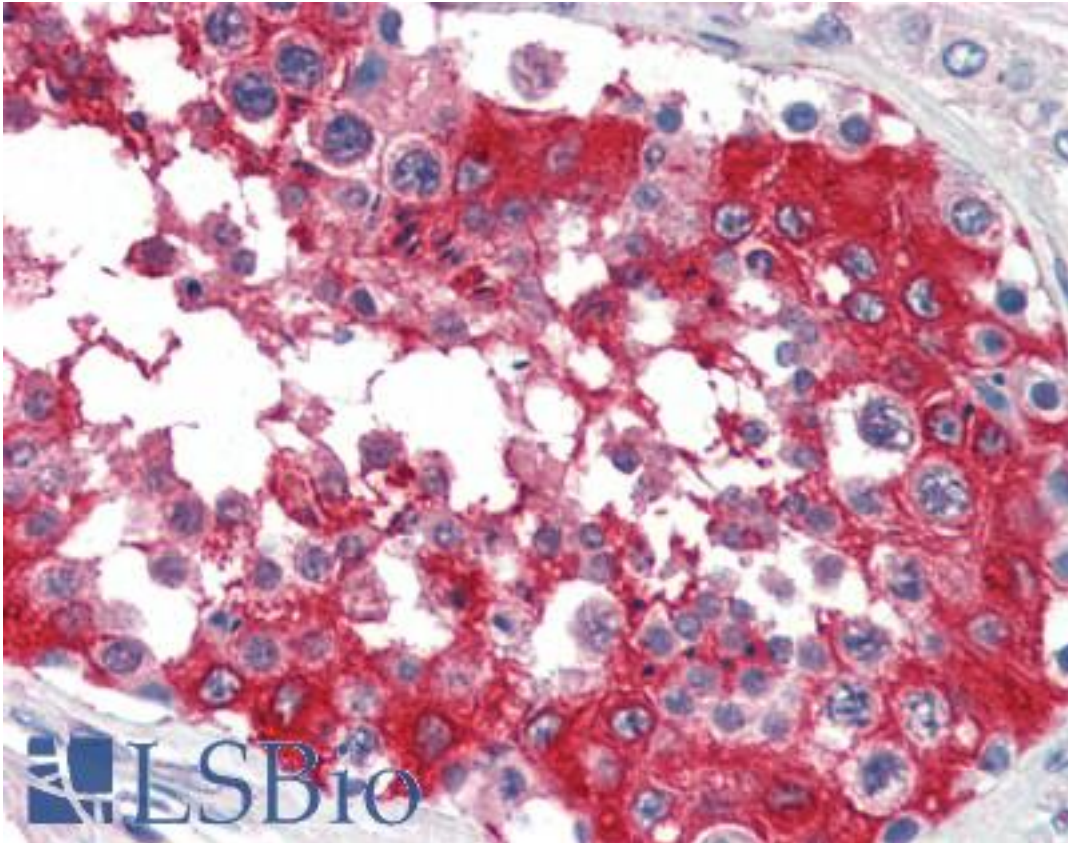
G6PD Goat anti-Human Polyclonal (aa305-318) Antibody - LS-B3252 - LSBio	
CatalogID:	LS-B3252
Validation:	This antibody replaces catalog number LS-C54888. It has been validated for use in the following assays: IHC-P.
Target:	glucose-6-phosphate dehydrogenase (G6PD)
Synonyms:	G6PD Antibody, G6PD1 Antibody
Host	G6PD antibody was produced in Goat
Clonality:	Polyclonal
Immunogen Species:	G6PD antibody was raised against Human
Antigen Type:	Synthetic peptide
Immunogen:	G6PD antibody was raised against synthetic peptide C-KPASTNSDDVRDEK from an internal region of human G6PD (NP_000393.4 ; NP_001035810.1). Percent identity by BLAST analysis: Human, Chimpanzee, Gorilla, Gibbon, Baboon, Monkey, Marmoset, Opossum, Platypus, Lizard, Pufferfish (100%); Galago, Rat, Sheep, Hamster, Elephant, Panda, Bat, Dog, Bovine, Rabbit, Horse, Xenopus, Trout, Salmon, Stickleback, Zebrafish (93%); Mouse, Shrew, Cat, Medaka (86%).
Specificity:	Human G6PD. This antibody is expected to recognise both reported isoforms (NP_000393.4 and NP_001035810.1).
Epitope:	aa305-318
Reactivity:	Human, Chimpanzee, Gorilla, Gibbon, Monkey
Predicted Reactivity:	Rat, Bat, Bovine, Dog, Hamster, Horse, Rabbit, Sheep, Xenopus, Zebrafish
Purification:	Immunoaffinity purified
Presentation:	Tris-buffered saline, pH 7.3, 0.5% BSA, 0.02% sodium azide
Recommended Storage:	Store at -20°C. Minimize freezing and thawing.
Usage Summary:	Immunohistochemistry: LS-B3252 was validated for use in immunohistochemistry on a panel of 21 formalin-fixed, paraffin-embedded (FFPE) human tissues after heat induced antigen retrieval in pH 6.0 citrate buffer. After incubation with the primary antibody, slides were incubated with biotinylated secondary antibody, followed by alkaline phosphatase-streptavidin and chromogen. The stained slides were evaluated by a pathologist to confirm staining specificity. The optimal working concentration for LS-B3252 was determined to be 2.5 ug/ml.
Uses:	IHC - Paraffin (2.5 µg/ml), Western blot (1:8000) & (0.1 - 0.3 µg/ml), ELISA (1:8000) (Optimal dilution to be determined by the researcher)
Size:	50 µg
Concentration:	0.5 mg/ml

Immunohistochemistry Image:



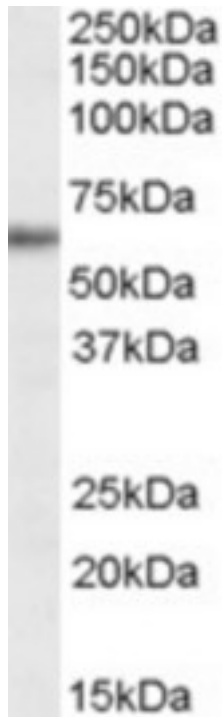
Anti-G6PD antibody IHC of human spleen. Immunohistochemistry of formalin-fixed, paraffin-embedded tissue after heat-induced antigen retrieval. Antibody LS-B3252 concentration 5 ug/ml.

Immunohistochemistry Image:



Anti-G6PD antibody IHC of human testis. Immunohistochemistry of formalin-fixed, paraffin-embedded tissue after heat-induced antigen retrieval. Antibody LS-B3252 concentration 5 ug/ml.

Western Blot Image:



Antibody (0.1 ug/ml) staining of Human Placenta lysate (35 ug protein in RIPA buffer).
Primary incubation was 1 hour. Detected by chemiluminescence.

Requested From:

Japan

Laboratory Reagent For In Vitro Research Use Only

Not for resale without prior written consent from LifeSpan BioSciences, Inc.

Created on 9/23/2014

© 2014 LifeSpan BioSciences