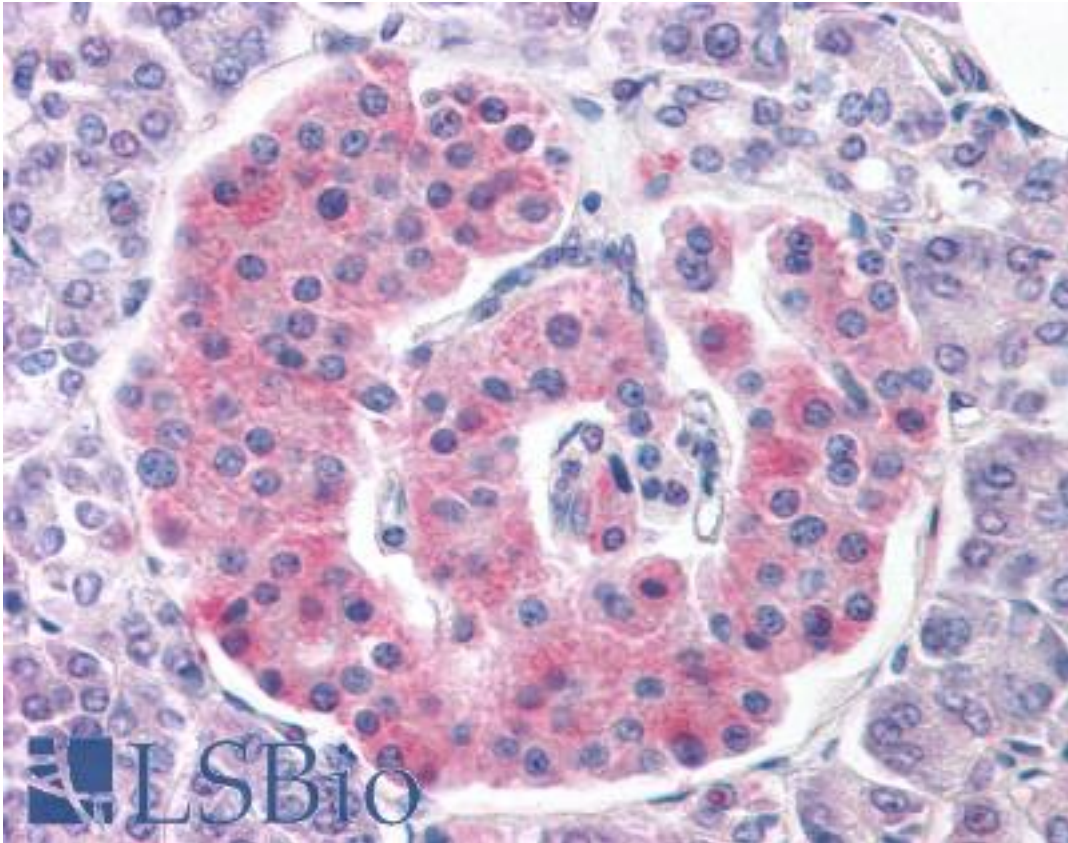


KCNJ11 / Kir6.2 Goat anti-Human Polyclonal (Internal) Antibody - LS-B3251 - LSBio

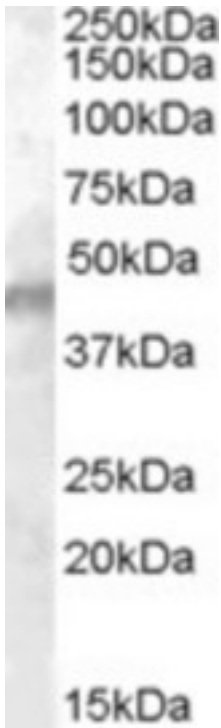
CatalogID:	LS-B3251
Validation:	This antibody replaces catalog number LS-C61759. It has been validated for use in the following assays: IHC-P.
Target:	potassium inwardly-rectifying channel, subfamily J, member 11 (KCNJ11)
Synonyms:	KCNJ11 Antibody, BIR Antibody, IKATP Antibody, HHF2 Antibody, PHHI Antibody, TNDM3 Antibody, Beta-cell KATP channel Antibody, KIR6.2 Antibody
Family / Subfamily:	Ion Channel / Potassium channel - inward-rectifying
Host	KCNJ11 antibody was produced in Goat
Clonality:	Polyclonal
Immunogen Species:	KCNJ11 / Kir6.2 antibody was raised against Human
Antigen Type:	Synthetic peptide
Immunogen:	KCNJ11 / Kir6.2 antibody was raised against synthetic peptide ERRARFVSKKGNC from an internal region (near the N-terminus) of human KCNJ11 / Kir6.2 (NP_034732.1). Percent identity by BLAST analysis: Monkey, Mouse, Rat, Bat, Rabbit, Guinea pig (100%); Human, Gorilla, Elephant, Panda, Dog, Horse, Pig (92%); Hamster, Bovine, Opossum, Platypus (83%).
Specificity:	Human KCNJ11 / Kir6.2.
Epitope:	Internal
Reactivity:	Human, Monkey, Mouse, Rat, Bat, Guinea pig, Rabbit
Predicted Reactivity:	Gorilla, Dog, Horse, Pig
Purification:	Immunoaffinity purified
Presentation:	Tris-buffered saline, pH 7.3, 0.5% BSA, 0.02% sodium azide
Recommended Storage:	Store at -20°C. Minimize freezing and thawing.
Usage Summary:	Immunohistochemistry: LS-B3251 was validated for use in immunohistochemistry on a panel of 21 formalin-fixed, paraffin-embedded (FFPE) human tissues after heat induced antigen retrieval in pH 6.0 citrate buffer. After incubation with the primary antibody, slides were incubated with biotinylated secondary antibody, followed by alkaline phosphatase-streptavidin and chromogen. The stained slides were evaluated by a pathologist to confirm staining specificity. The optimal working concentration for LS-B3251 was determined to be 3.75 ug/ml.
Uses:	IHC - Paraffin (3.75 µg/ml), Western blot (0.01 - 0.03 µg/ml), ELISA (1:64000) (Optimal dilution to be determined by the researcher)
Size:	50 µg
Concentration:	0.5 mg/ml

Immunohistochemistry Image:



Anti-KCNJ11 / Kir6.2 antibody IHC of human pancreas. Immunohistochemistry of formalin-fixed, paraffin-embedded tissue after heat-induced antigen retrieval. Antibody LS-B3251 concentration 75 ug/ml.

Western Blot Image:



Antibody (0.01 ug/ml) staining of Human Muscle lysate (35 ug protein in RIPA buffer). Primary incubation was 1 hour. Detected by chemiluminescence.

Requested From:

Japan

Laboratory Reagent For In Vitro Research Use Only

Not for resale without prior written consent from LifeSpan BioSciences, Inc.

Created on 9/23/2014

© 2014 LifeSpan BioSciences