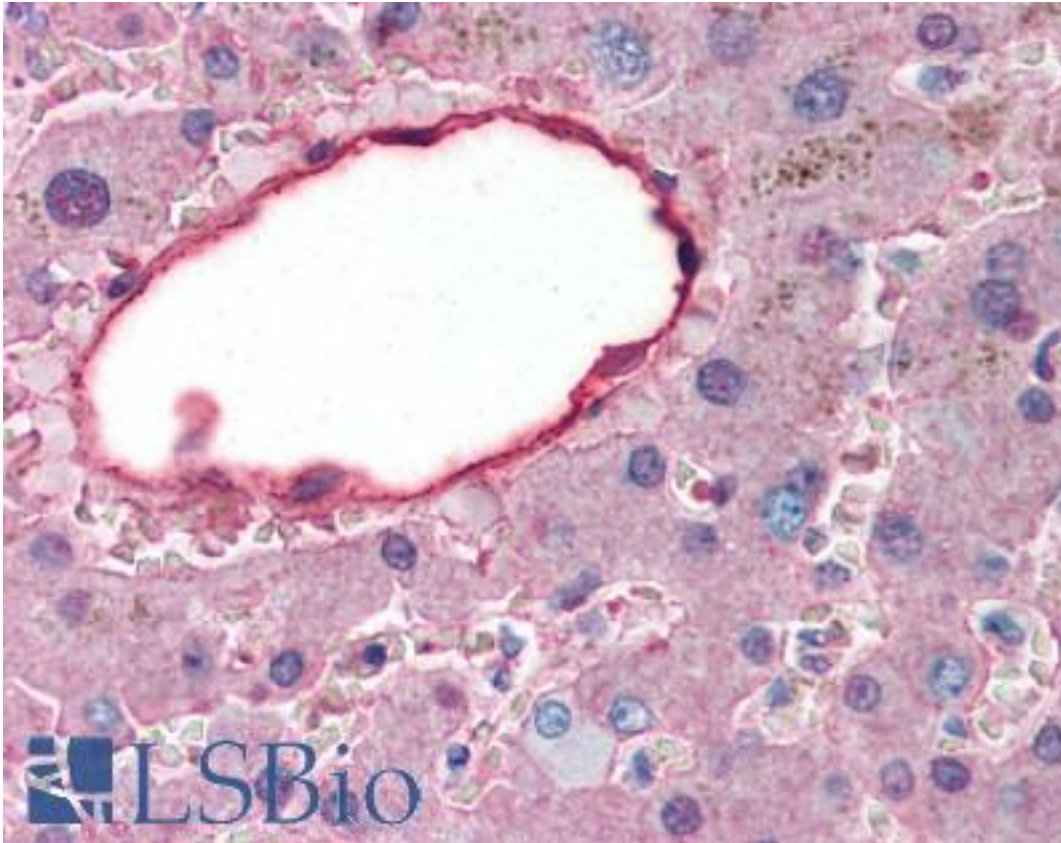


ALB / Serum Albumin Rabbit anti-Human Polyclonal (Biotin) Antibody - LS-B325 - LSBio

CatalogID:	LS-B325
Validation:	This antibody replaces catalog number LS-C18955. It has been validated for use in the following assays: IHC.
Target:	albumin
Synonyms:	ALB Antibody, Albumin (32 AA) Antibody, Albumin (AA 34) Antibody, Albumin Antibody, Growth-inhibiting protein 20 Antibody, PRO1341 Antibody, PRO0883 Antibody, Serum albumin Antibody, PRO0903 Antibody
Host	ALB antibody was produced in Rabbit
Clonality:	Polyclonal
Conjugations:	Biotin
Immunogen Species:	ALB / Serum Albumin antibody was raised against Human
Specificity:	Human Serum Albumin.
Reactivity:	Human
Purification:	Immunoaffinity purified
Presentation:	0.02 M potassium phosphate, 0.15 M sodium chloride, pH 7.2, 10 mg/ml BSA (IgG, protease free), 0.01% sodium azide.
Recommended Storage:	+4°C or -20°C, Avoid repeated freezing and thawing.
Usage Summary:	Immunohistochemistry: LS-B325 was validated for use in immunohistochemistry on a panel of 21 formalin-fixed, paraffin-embedded (FFPE) human tissues after heat induced antigen retrieval in pH 6.0 citrate buffer. After incubation with the primary antibody, slides were incubated with biotinylated secondary antibody, followed by alkaline phosphatase-streptavidin and chromogen. The stained slides were evaluated by a pathologist to confirm staining specificity. The optimal working concentration for LS-B325 was determined to be 2.5 ug/ml.
Uses:	IHC - Paraffin (2.5 µg/ml), Western blot (1:1000 - 1:5000), ELISA (1:5000 - 1:25000) (Optimal dilution to be determined by the researcher)
Size:	50 µg
Concentration:	1 mg/ml

Immunohistochemistry Image:



Anti-Serum Albumin antibody IHC of human liver. Immunohistochemistry of formalin-fixed, paraffin-embedded tissue after heat-induced antigen retrieval. Antibody LS-B325 concentration 5 ug/ml.

Requested From:

Japan

Laboratory Reagent For In Vitro Research Use Only

Not for resale without prior written consent from LifeSpan BioSciences, Inc.

Created on 9/23/2014

© 2014 LifeSpan BioSciences