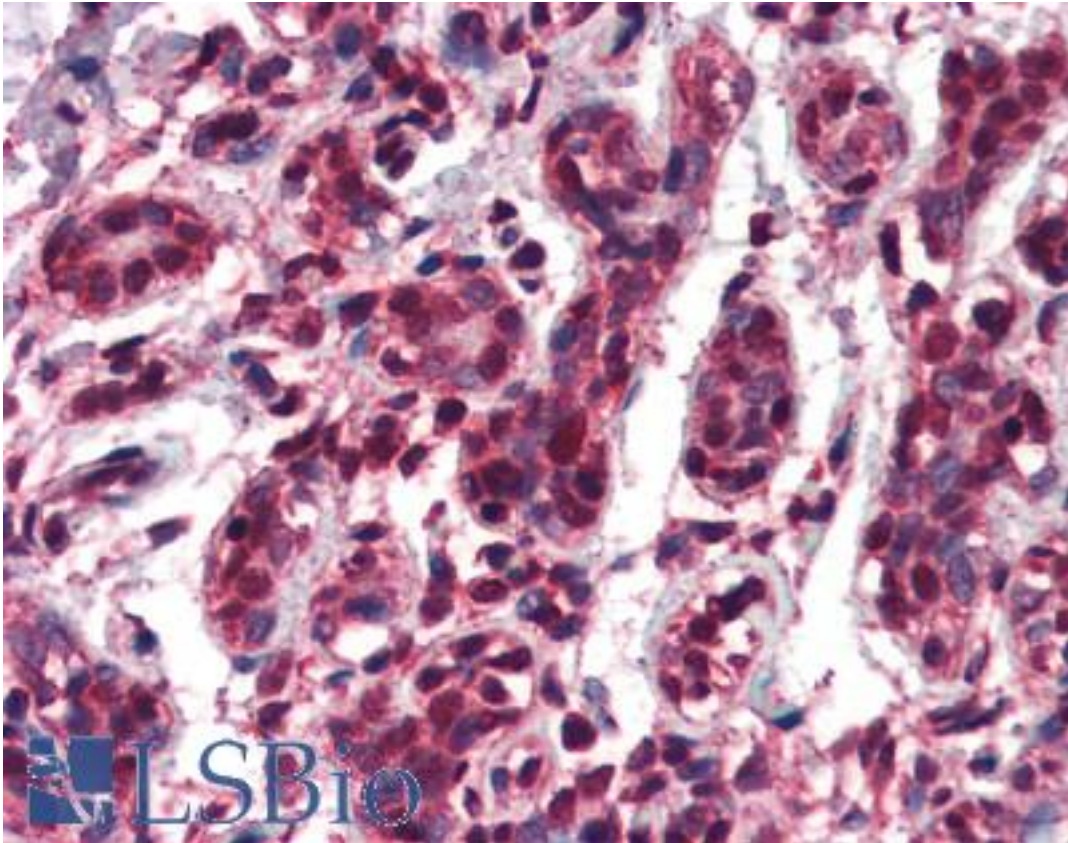


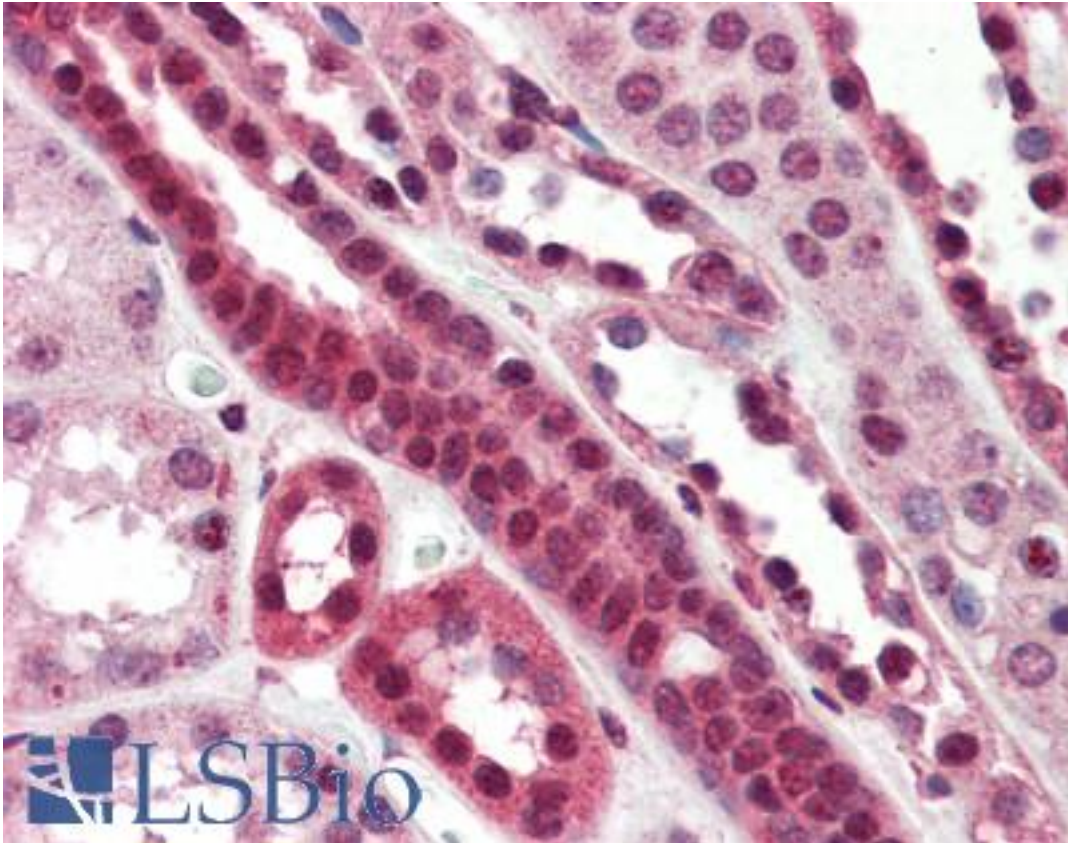
TCF3 / E2A Goat anti-Human Polyclonal (Internal) Antibody - LS-B3248 - LSBio	
<b>CatalogID:</b>	LS-B3248
<b>Validation:</b>	This antibody replaces catalog number LS-C55571. It has been validated for use in the following assays: IHC-P.
<b>Target:</b>	transcription factor 3 (TCF3)
<b>Synonyms:</b>	TCF3 Antibody, BHLHb21 Antibody, E2A Antibody, E47 Antibody, Helix-loop-helix protein HE47 Antibody, Kappa-E2-binding factor Antibody, TCF-3 Antibody, Transcription factor 3 Antibody, Transcription factor E2-alpha Antibody, Transcription factor ITF-1 Antibody, VDR interacting repressor Antibody, ITF1 Antibody, VDIR Antibody
<b>Host</b>	TCF3 antibody was produced in Goat
<b>Clonality:</b>	Polyclonal
<b>Immunogen Species:</b>	TCF3 / E2A antibody was raised against Human
<b>Antigen Type:</b>	Synthetic peptide
<b>Immunogen:</b>	TCF3 / E2A antibody was raised against synthetic peptide C-KAPRARTSPDEDED from an internal region of human TCF3 (NP_003191.1). Percent identity by BLAST analysis: Human, Gibbon (100%); Hamster, Pig (93%); Mouse, Rat, Panda, Bat (86%).
<b>Specificity:</b>	Human TCF3.
<b>Epitope:</b>	Internal
<b>Reactivity:</b>	Human, Gibbon
<b>Predicted Reactivity:</b>	Hamster, Pig
<b>Purification:</b>	Immunoaffinity purified
<b>Presentation:</b>	Tris-buffered saline, pH 7.3, 0.5% BSA, 0.02% sodium azide
<b>Recommended Storage:</b>	Store at -20°C. Minimize freezing and thawing.
<b>Usage Summary:</b>	Immunohistochemistry: LS-B3248 was validated for use in immunohistochemistry on a panel of 21 formalin-fixed, paraffin-embedded (FFPE) human tissues after heat induced antigen retrieval in pH 6.0 citrate buffer. After incubation with the primary antibody, slides were incubated with biotinylated secondary antibody, followed by alkaline phosphatase-streptavidin and chromogen. The stained slides were evaluated by a pathologist to confirm staining specificity. The optimal working concentration for LS-B3248 was determined to be 3.75 ug/ml.
<b>Uses:</b>	IHC - Paraffin (3.75 µg/ml), Western blot (1:128000) & (0.01 - 0.03 µg/ml), ELISA (1:128000) (Optimal dilution to be determined by the researcher)
<b>Size:</b>	50 µg
<b>Concentration:</b>	0.5 mg/ml

**Immunohistochemistry Image:**



Anti-TCF3 antibody IHC of human breast. Immunohistochemistry of formalin-fixed, paraffin-embedded tissue after heat-induced antigen retrieval. Antibody LS-B3248 concentration 75 ug/ml.

**Immunohistochemistry Image:**



Anti-TCF3 antibody IHC of human kidney. Immunohistochemistry of formalin-fixed, paraffin-embedded tissue after heat-induced antigen retrieval. Antibody LS-B3248 concentration 75 ug/ml.

**Western Blot Image:**



Antibody (0.01 ug/ml) staining of Daudi cell lysate (35 ug protein in RIPA buffer). Primary incubation was 1 hour. Detected by chemiluminescence.

**Requested From:**

Japan

Laboratory Reagent For In Vitro Research Use Only

Not for resale without prior written consent from LifeSpan BioSciences, Inc.

Created on 9/23/2014

© 2014 LifeSpan BioSciences