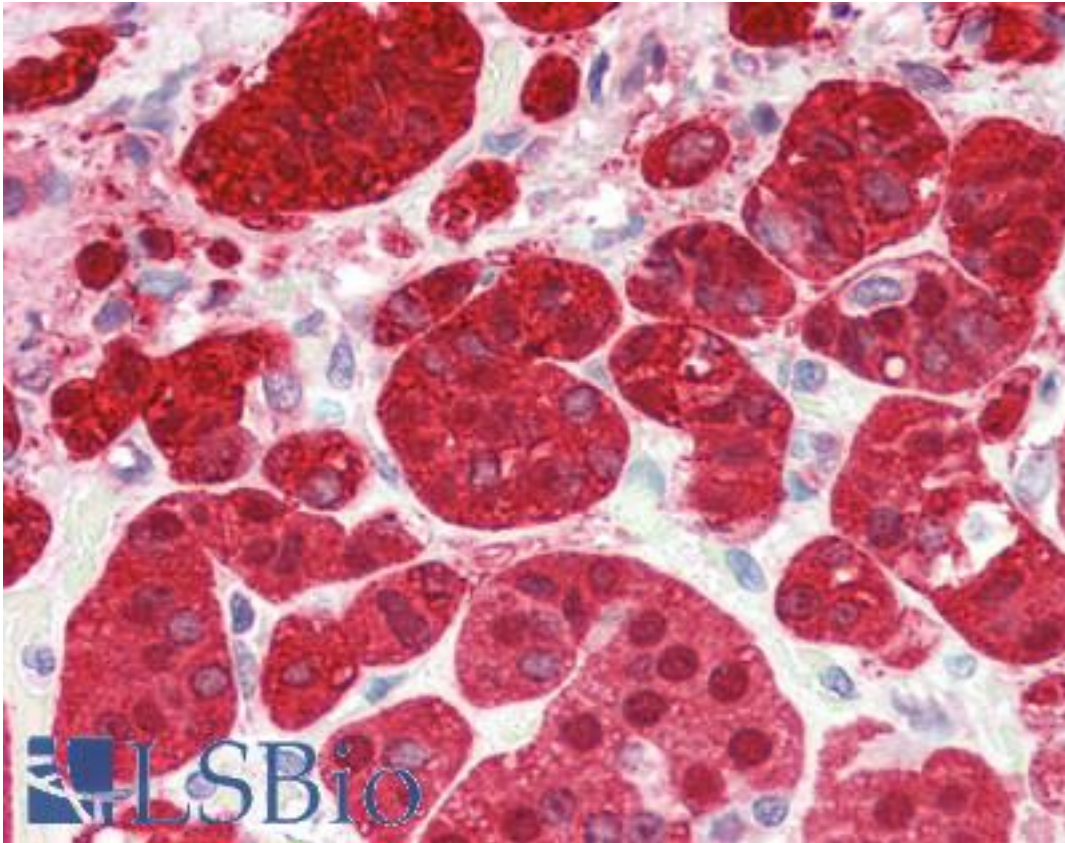


PEBP1 / RKIP Goat anti-Human Polyclonal (Internal) Antibody - LS-B3247 - LSBio

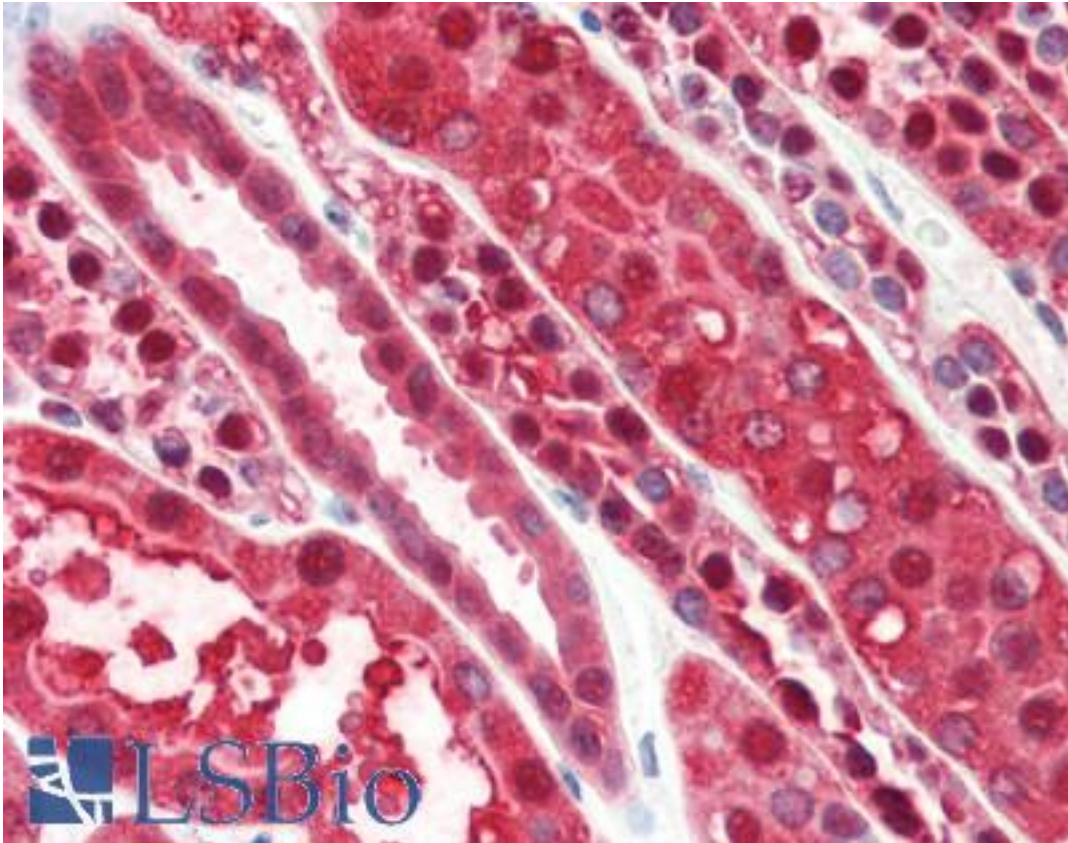
<b>CatalogID:</b>	LS-B3247
<b>Validation:</b>	This antibody replaces catalog number LS-C55258. It has been validated for use in the following assays: IHC-P.
<b>Target:</b>	phosphatidylethanolamine binding protein 1 (PEBP1)
<b>Synonyms:</b>	PEBP1 Antibody, HCNP Antibody, HCNPpp Antibody, PBP Antibody, Prostatic binding protein Antibody, Raf kinase inhibitor protein Antibody, Raf kinase inhibitory protein Antibody, Prostatic-binding protein Antibody, Neuropolypeptide h3 Antibody, PEBP Antibody, PEBP-1 Antibody, RKIP Antibody
<b>Host</b>	PEBP1 antibody was produced in Goat
<b>Clonality:</b>	Polyclonal
<b>Immunogen Species:</b>	PEBP1 / RKIP antibody was raised against Human
<b>Antigen Type:</b>	Synthetic peptide
<b>Immunogen:</b>	PEBP1 / RKIP antibody was raised against synthetic peptide C-DPDAPSRKDPKYRE from an internal region of human PEBP1 (NP_002558.1). Percent identity by BLAST analysis: Human, Gorilla, Orangutan, Monkey, Marmoset, Bovine, Dog, Rabbit, Pig (100%); Mouse, Rat, Hamster, Panda, Horse, Opossum, Turkey, Chicken, Catfish, Stickleback, Pike, Pufferfish, Zebrafish, Drosophila, Beetle (93%); Xenopus, Mosquito, Ant, Nematode (86%).
<b>Specificity:</b>	Human PEBP1.
<b>Epitope:</b>	Internal
<b>Reactivity:</b>	Human, Gorilla, Orangutan, Monkey, Bovine, Dog, Pig, Rabbit
<b>Predicted Reactivity:</b>	Mouse, Rat, Hamster, Horse, Chicken, Zebrafish, Drosophila
<b>Purification:</b>	Immunoaffinity purified
<b>Presentation:</b>	Tris-buffered saline, pH 7.3, 0.5% BSA, 0.02% sodium azide
<b>Recommended Storage:</b>	Store at -20°C. Minimize freezing and thawing.
<b>Usage Summary:</b>	Immunohistochemistry: LS-B3247 was validated for use in immunohistochemistry on a panel of 21 formalin-fixed, paraffin-embedded (FFPE) human tissues after heat induced antigen retrieval in pH 6.0 citrate buffer. After incubation with the primary antibody, slides were incubated with biotinylated secondary antibody, followed by alkaline phosphatase-streptavidin and chromogen. The stained slides were evaluated by a pathologist to confirm staining specificity. The optimal working concentration for LS-B3247 was determined to be 2.5 µg/ml.
<b>Uses:</b>	IHC - Paraffin (2.5 µg/ml), Western blot (1:128000) & (0.01 - 0.03 µg/ml), ELISA (1:128000) (Optimal dilution to be determined by the researcher)
<b>Size:</b>	50 µg
<b>Concentration:</b>	0.5 mg/ml

**Immunohistochemistry Image:**



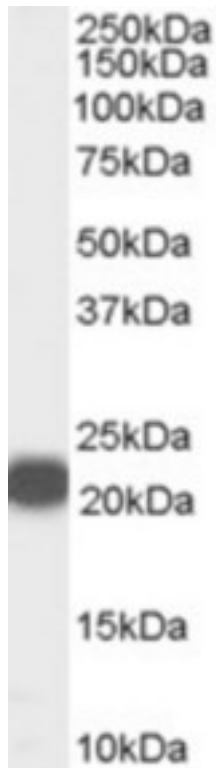
Anti-PEBP1 antibody IHC of human adrenal. Immunohistochemistry of formalin-fixed, paraffin-embedded tissue after heat-induced antigen retrieval. Antibody LS-B3247 concentration 5 ug/ml.

**Immunohistochemistry Image:**



Anti-PEBP1 antibody IHC of human kidney. Immunohistochemistry of formalin-fixed, paraffin-embedded tissue after heat-induced antigen retrieval. Antibody LS-B3247 concentration 5 ug/ml.

**Western Blot Image:**



Antibody (0.01 ug/ml) staining of Human Prostate lysate (35 ug protein in RIPA buffer).  
Primary incubation was 1 hour. Detected by chemiluminescence.

**Requested From:**

Japan

Laboratory Reagent For In Vitro Research Use Only

Not for resale without prior written consent from LifeSpan BioSciences, Inc.

Created on 9/23/2014

© 2014 LifeSpan BioSciences