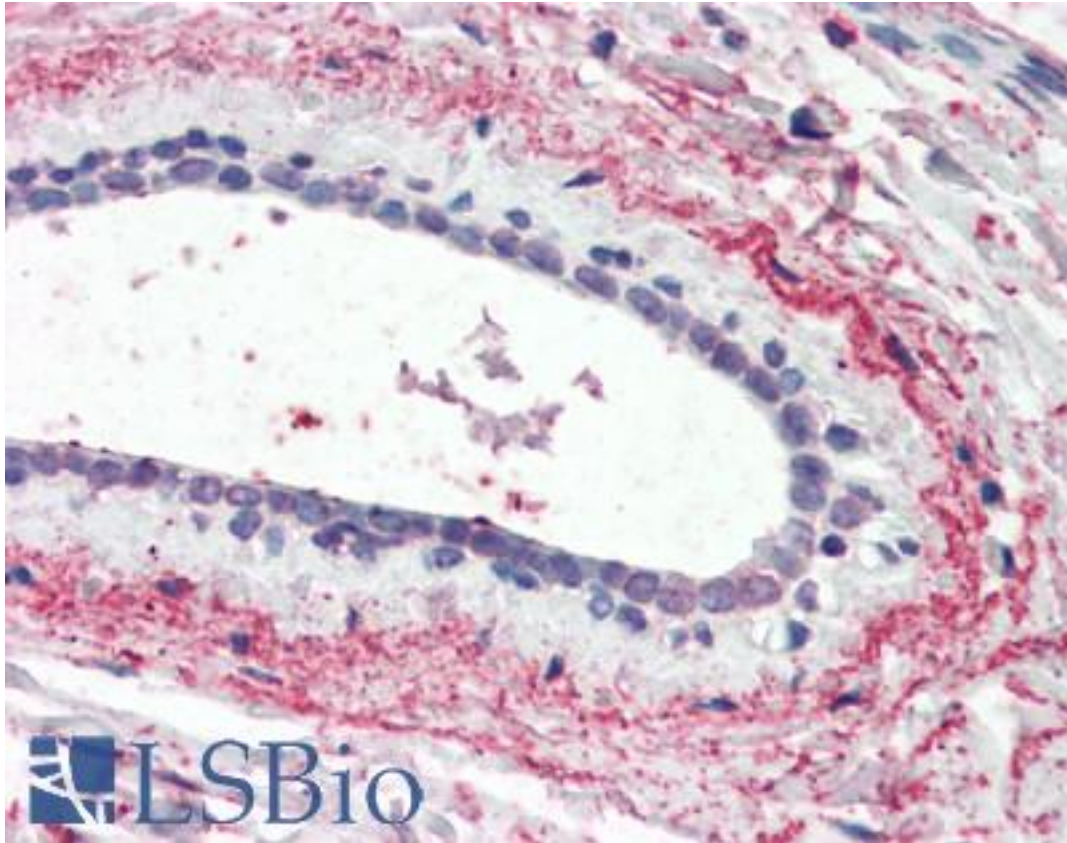


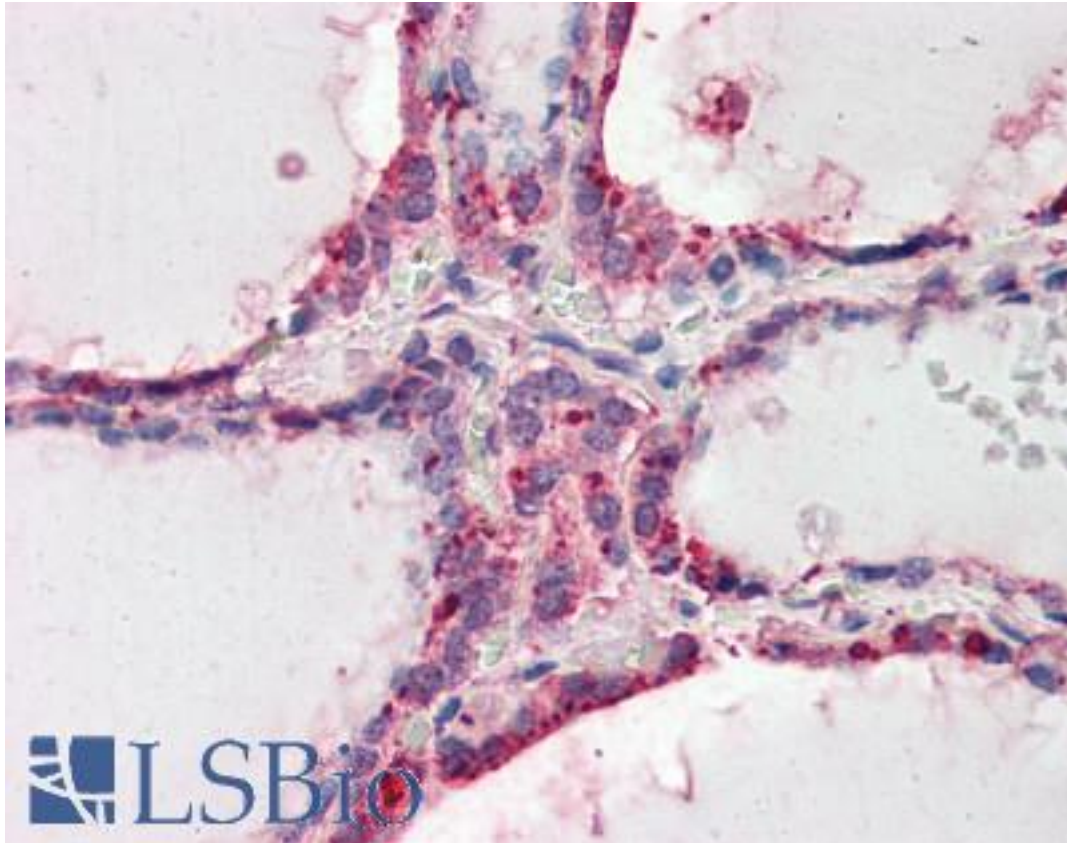
WNT3 Goat anti-Human Polyclonal (Internal) Antibody - LS-B3241 - LSBio	
<b>CatalogID:</b>	LS-B3241
<b>Validation:</b>	This antibody replaces catalog number LS-C55693. It has been validated for use in the following assays: IHC-P.
<b>Target:</b>	wingless-type MMTV integration site family, member 3 (WNT3)
<b>Synonyms:</b>	WNT3 Antibody, Proto-oncogene Int-4 homolog Antibody, Proto-oncogene Wnt-3 Antibody, INT4 Antibody, WNT-3 proto-oncogene protein Antibody
<b>Family / Subfamily:</b>	WNT / not assigned-WNT
<b>Host</b>	WNT3 antibody was produced in Goat
<b>Clonality:</b>	Polyclonal
<b>Immunogen Species:</b>	WNT3 antibody was raised against Human
<b>Antigen Type:</b>	Synthetic peptide
<b>Immunogen:</b>	WNT3 antibody was raised against synthetic peptide CGRGHNTRTEKRKEK from an internal region of human WNT3 (NP_110380.1). Percent identity by BLAST analysis: Human, Gorilla, Gibbon, Monkey, Marmoset, Mouse, Rat, Elephant, Panda, Bovine, Dog, Bat, Horse, Pig, Opossum, Turkey, Chicken, Xenopus, Newt, Seabass, Stickleback, Pufferfish, Zebrafish (100%); Platypus (87%); Rabbit (80%).
<b>Specificity:</b>	Human WNT3.
<b>Epitope:</b>	Internal
<b>Reactivity:</b>	Human, Gorilla, Gibbon, Monkey, Mouse, Rat, Bat, Bovine, Dog, Horse, Pig, Chicken, Xenopus, Zebrafish
<b>Purification:</b>	Immunoaffinity purified
<b>Presentation:</b>	Tris-buffered saline, pH 7.3, 0.5% BSA, 0.02% sodium azide
<b>Recommended Storage:</b>	Store at -20°C. Minimize freezing and thawing.
<b>Usage Summary:</b>	Immunohistochemistry: LS-B3241 was validated for use in immunohistochemistry on a panel of 21 formalin-fixed, paraffin-embedded (FFPE) human tissues after heat induced antigen retrieval in pH 6.0 citrate buffer. After incubation with the primary antibody, slides were incubated with biotinylated secondary antibody, followed by alkaline phosphatase-streptavidin and chromogen. The stained slides were evaluated by a pathologist to confirm staining specificity. The optimal working concentration for LS-B3241 was determined to be 3.75 ug/ml.
<b>Uses:</b>	IHC - Paraffin (3.75 µg/ml), Western blot (1:2000) & (1 - 3 µg/ml), ELISA (1:2000) (Optimal dilution to be determined by the researcher)
<b>Size:</b>	50 µg
<b>Concentration:</b>	0.5 mg/ml

**Immunohistochemistry Image:**



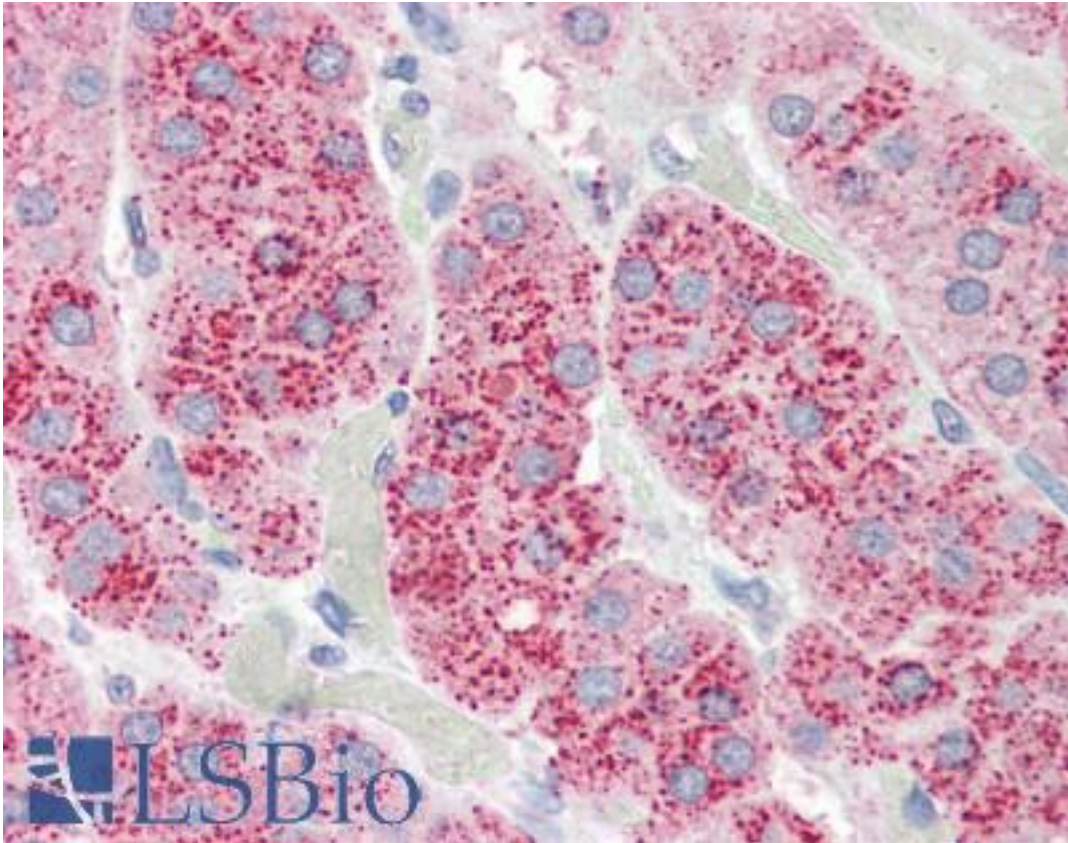
Anti-WNT3 antibody IHC of human breast. Immunohistochemistry of formalin-fixed, paraffin-embedded tissue after heat-induced antigen retrieval. Antibody LS-B3241 concentration 75 ug/ml.

**Immunohistochemistry Image:**



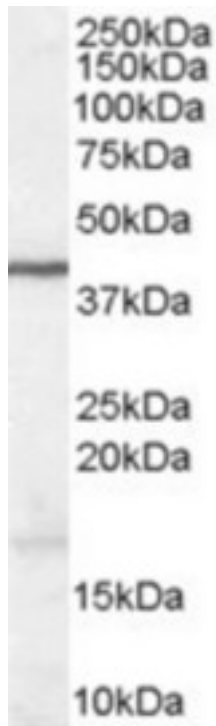
Anti-WNT3 antibody IHC of human thyroid. Immunohistochemistry of formalin-fixed, paraffin-embedded tissue after heat-induced antigen retrieval. Antibody LS-B3241 concentration 75 ug/ml.

**Immunohistochemistry Image:**



Anti-WNT3 antibody IHC of human adrenal. Immunohistochemistry of formalin-fixed, paraffin-embedded tissue after heat-induced antigen retrieval. Antibody LS-B3241 concentration 75 ug/ml.

**Western Blot Image:**



Antibody (1 ug/ml) staining of Human Brain lysate (35 ug protein in RIPA buffer). Primary incubation was 1 hour. Detected by chemiluminescence.

**Requested From:**

Japan

Laboratory Reagent For In Vitro Research Use Only

Not for resale without prior written consent from LifeSpan BioSciences, Inc.

Created on 9/23/2014

© 2014 LifeSpan BioSciences