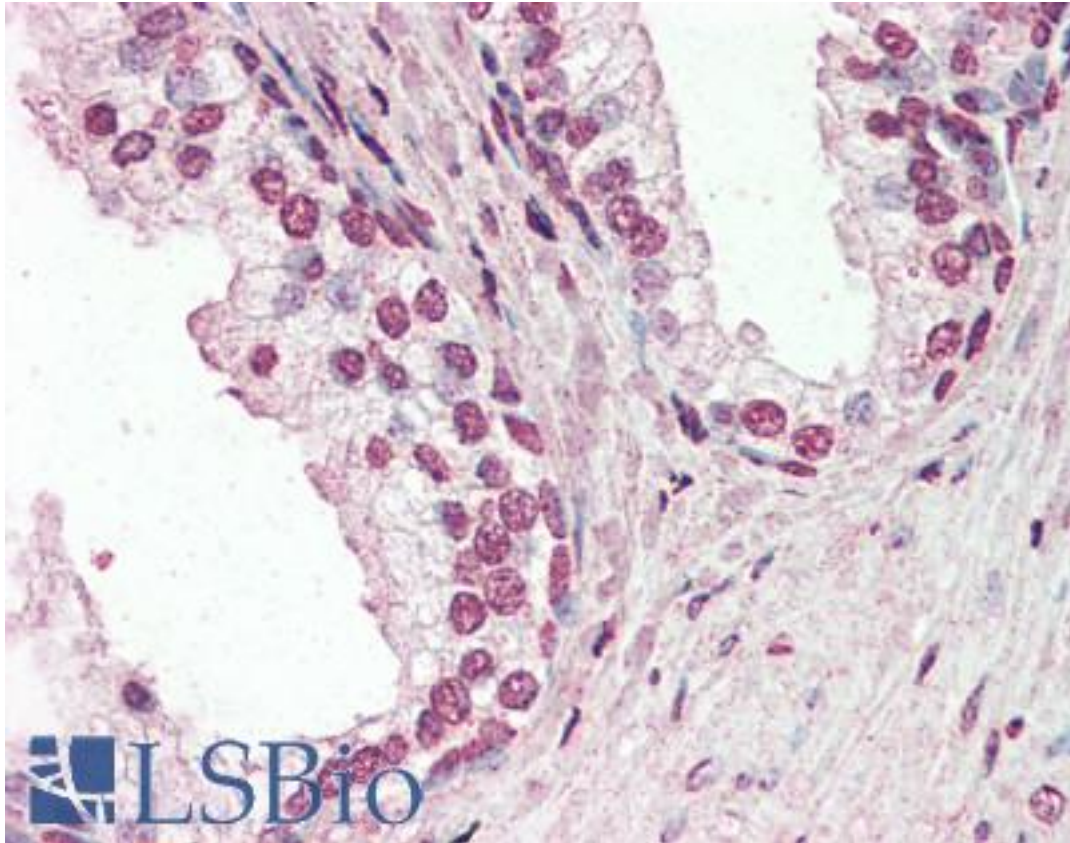


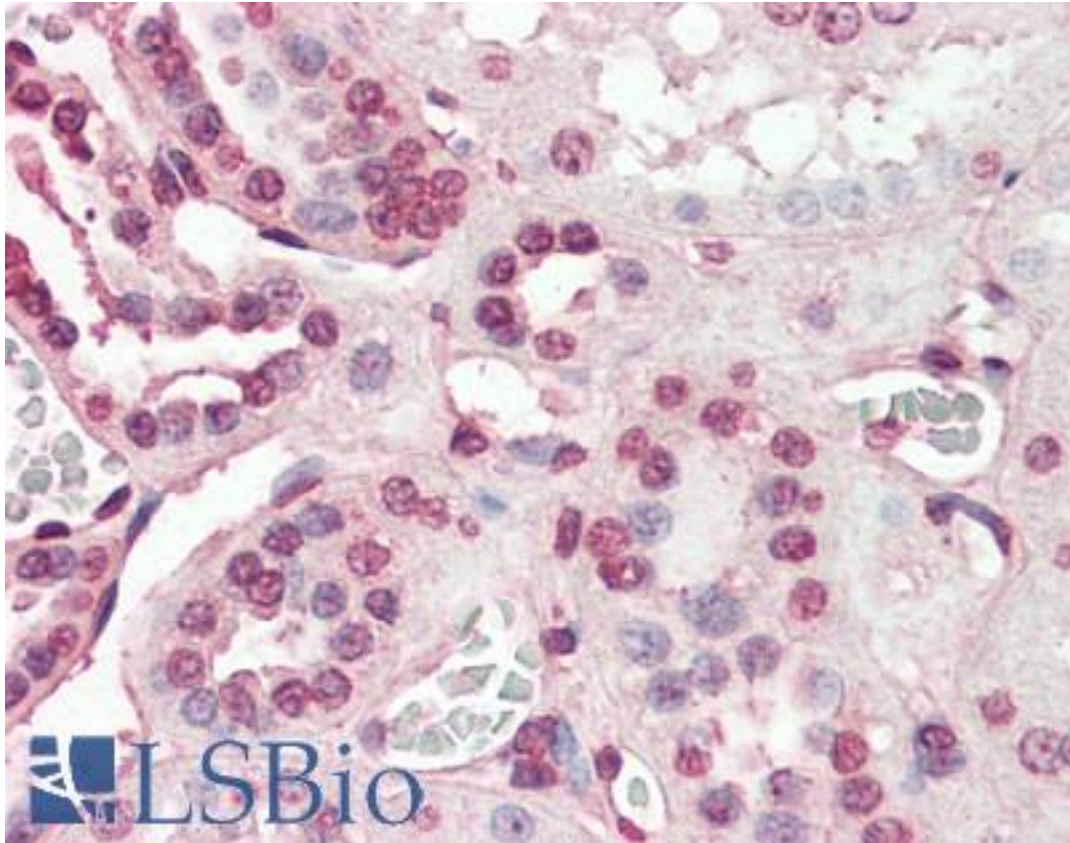
PIAS2 / PIASX Goat anti-Human Polyclonal (Internal) Antibody - LS-B3240 - LSBio	
<b>CatalogID:</b>	LS-B3240
<b>Validation:</b>	This antibody replaces catalog number LS-C55280. It has been validated for use in the following assays: IHC-P.
<b>Target:</b>	protein inhibitor of activated STAT, 2 (PIAS2)
<b>Synonyms:</b>	PIAS2 Antibody, ARIP3 Antibody, DAB2-interacting protein Antibody, DIP Antibody, MIZ Antibody, MIZ1 Antibody, PIAS-NY protein Antibody, PIASX Antibody, PIASX-ALPHA Antibody, PIASX-BETA Antibody, SIZ2 Antibody, ZMIZ4 Antibody, E3 SUMO-protein ligase PIAS2 Antibody
<b>Host</b>	PIAS2 antibody was produced in Goat
<b>Clonality:</b>	Polyclonal
<b>Immunogen Species:</b>	PIAS2 / PIASX antibody was raised against Human
<b>Antigen Type:</b>	Synthetic peptide
<b>Immunogen:</b>	PIAS2 / PIASX antibody was raised against synthetic peptide KEAMKVSSQPCTKIE from an internal region of human PIAS2 (NP_775298.1; NP_004662.2). Percent identity by BLAST analysis: Human, Gorilla, Gibbon, Monkey, Panda, Dog, Bat, Horse, Rabbit (100%); Marmoset, Hamster, Elephant (93%); Mouse, Rat, Bovine (87%); Platypus (80%).
<b>Specificity:</b>	Human PIAS2. This antibody is expected to recognise both reported isoforms (NP_775298.1 and NP_004662.2). No cross-reactivity expected with PIAS1, 3 and 4.
<b>Epitope:</b>	Internal
<b>Reactivity:</b>	Human, Gorilla, Gibbon, Bat, Dog, Horse, Rabbit
<b>Predicted Reactivity:</b>	Monkey, Hamster
<b>Purification:</b>	Immunoaffinity purified
<b>Presentation:</b>	Tris-buffered saline, pH 7.3, 0.5% BSA, 0.02% sodium azide
<b>Recommended Storage:</b>	Store at -20°C. Minimize freezing and thawing.
<b>Usage Summary:</b>	Immunohistochemistry: LS-B3240 was validated for use in immunohistochemistry on a panel of 21 formalin-fixed, paraffin-embedded (FFPE) human tissues after heat induced antigen retrieval in pH 6.0 citrate buffer. After incubation with the primary antibody, slides were incubated with biotinylated secondary antibody, followed by alkaline phosphatase-streptavidin and chromogen. The stained slides were evaluated by a pathologist to confirm staining specificity. The optimal working concentration for LS-B3240 was determined to be 3.75 ug/ml.
<b>Uses:</b>	IHC - Paraffin (3.75 µg/ml), ELISA (1:8000) (Optimal dilution to be determined by the researcher)
<b>Size:</b>	50 µg
<b>Concentration:</b>	0.5 mg/ml

**Immunohistochemistry Image:**



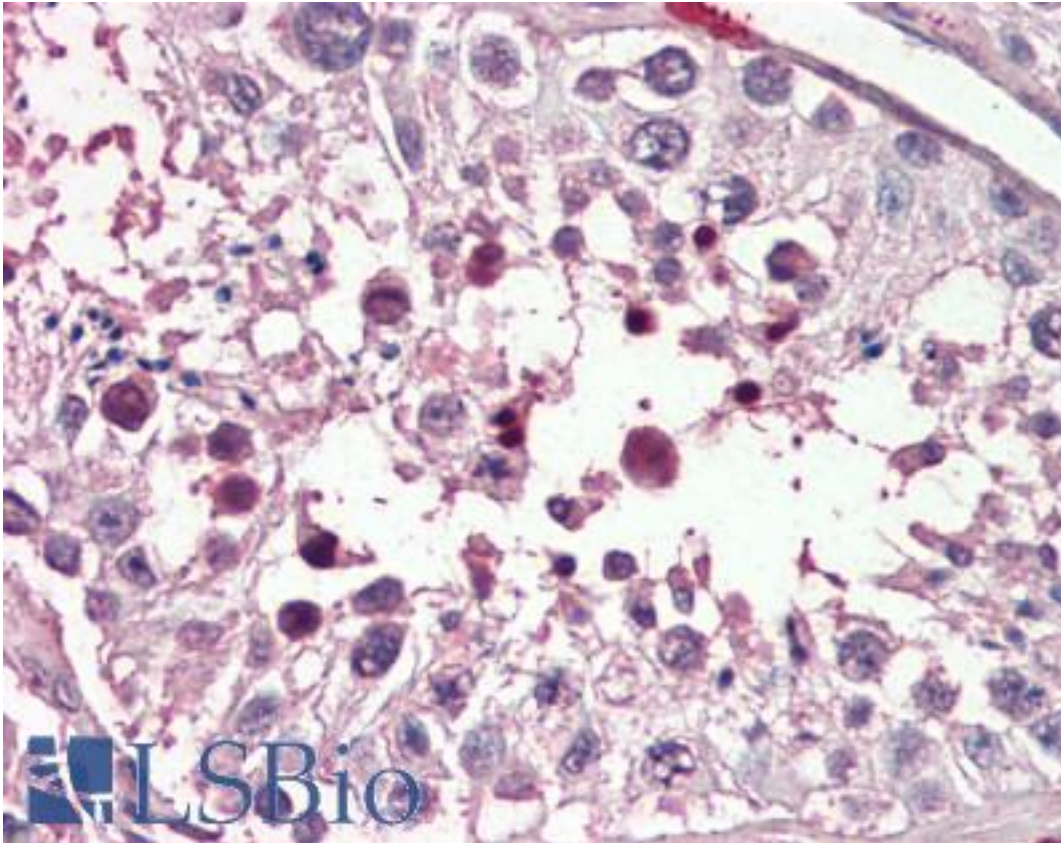
Anti-PIAS2 antibody IHC of human prostate. Immunohistochemistry of formalin-fixed, paraffin-embedded tissue after heat-induced antigen retrieval. Antibody LS-B3240 concentration 75 ug/ml.

**Immunohistochemistry Image:**



Anti-PIAS2 antibody IHC of human kidney. Immunohistochemistry of formalin-fixed, paraffin-embedded tissue after heat-induced antigen retrieval. Antibody LS-B3240 concentration 75 ug/ml.

**Immunohistochemistry Image:**



Anti-PIAS2 antibody IHC of human testis. Immunohistochemistry of formalin-fixed, paraffin-embedded tissue after heat-induced antigen retrieval. Antibody LS-B3240 concentration 75 ug/ml.

**Requested From:**

Japan

Laboratory Reagent For In Vitro Research Use Only

Not for resale without prior written consent from LifeSpan BioSciences, Inc.

Created on 9/23/2014

© 2014 LifeSpan BioSciences