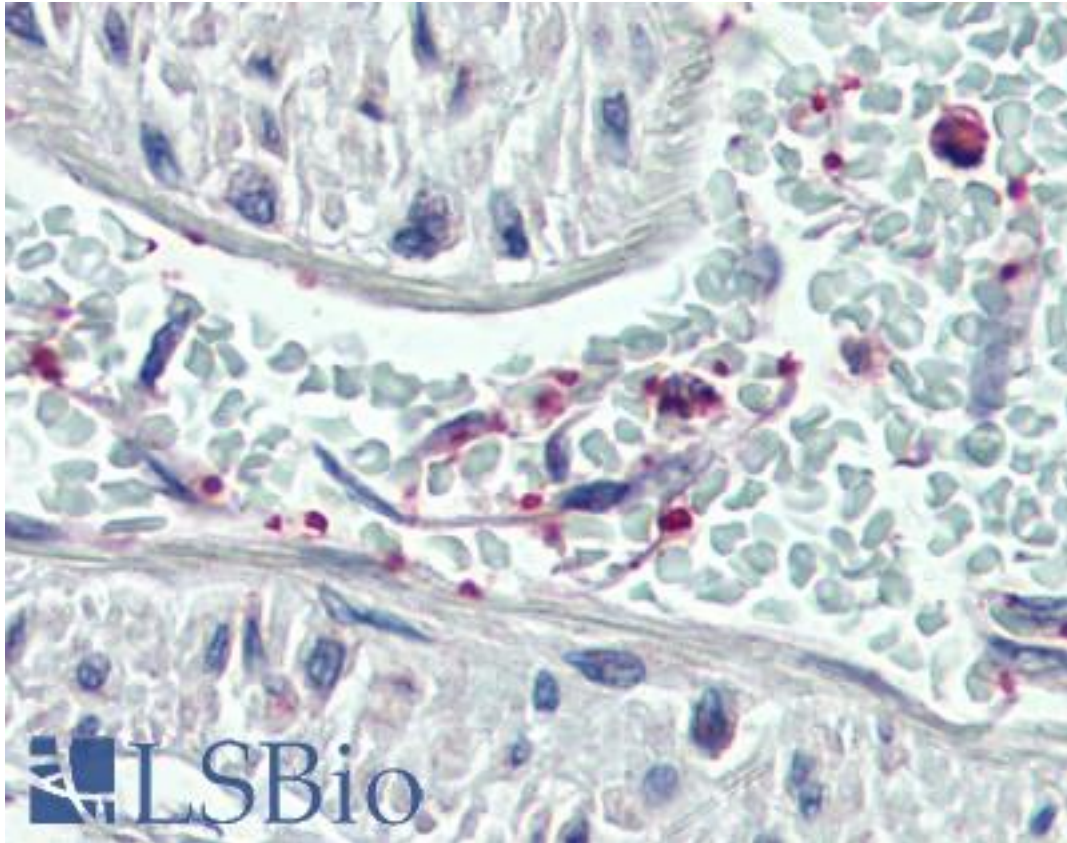


**PLEK / Pleckstrin Goat anti-Human Polyclonal (C-Terminus) Antibody - LS-B3236 - LSBio**

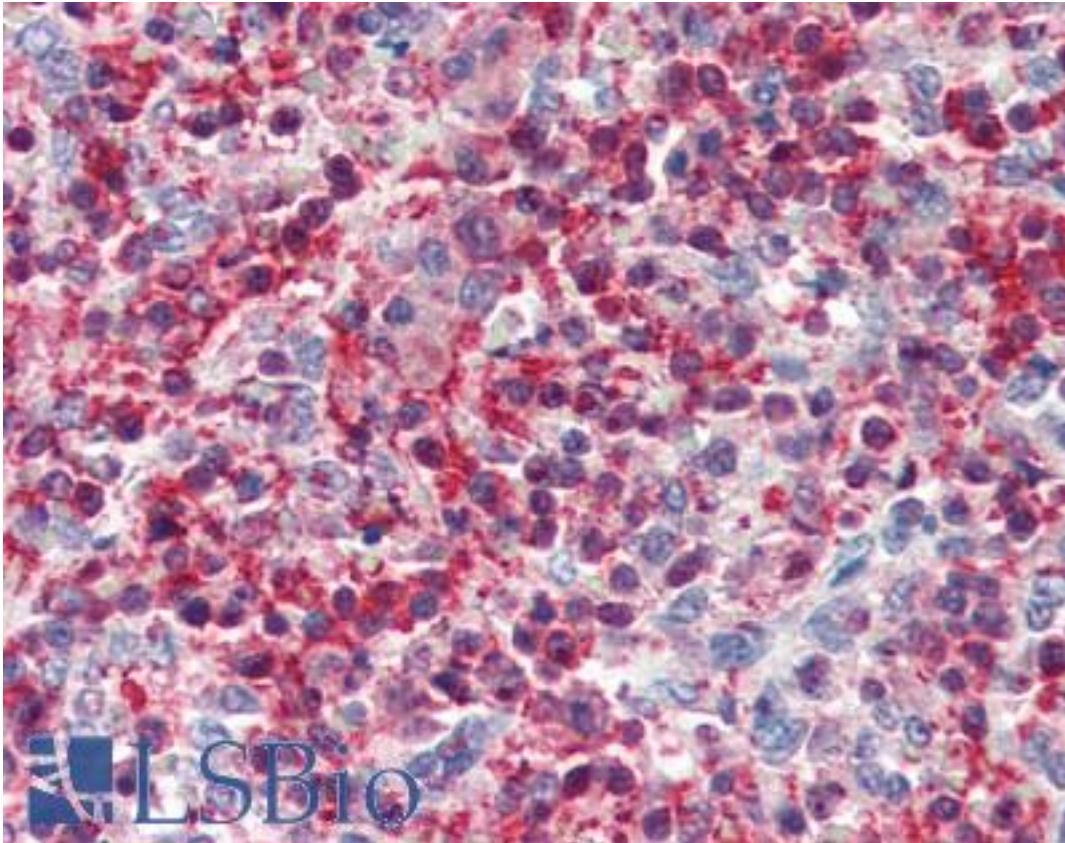
<b>CatalogID:</b>	LS-B3236
<b>Validation:</b>	This antibody replaces catalog number LS-C55296. It has been validated for use in the following assays: IHC-P.
<b>Target:</b>	pleckstrin (PLEK)
<b>Synonyms:</b>	PLEK Antibody, Platelet 47 kDa protein Antibody, Pleckstrin Antibody, p47 Antibody
<b>Host</b>	PLEK antibody was produced in Goat
<b>Clonality:</b>	Polyclonal
<b>Immunogen Species:</b>	PLEK / Pleckstrin antibody was raised against Human
<b>Antigen Type:</b>	Synthetic peptide
<b>Immunogen:</b>	PLEK / Pleckstrin antibody was raised against synthetic peptide C-EWIKAIQMASRTGK from the C-terminus of human PLEK (NP_002655.2). Percent identity by BLAST analysis: Gorilla (100%); Human, Gibbon, Monkey, Marmoset, Mouse, Rat, Hamster, Panda, Bovine, Bat, Dog, Rabbit, Horse (93%); Elephant, Opossum, Lizard (86%).
<b>Specificity:</b>	Human PLEK.
<b>Epitope:</b>	C-Terminus
<b>Reactivity:</b>	Human, Gorilla
<b>Predicted Reactivity:</b>	Gibbon, Monkey, Mouse, Rat, Bat, Bovine, Dog, Hamster, Horse, Rabbit
<b>Purification:</b>	Immunoaffinity purified
<b>Presentation:</b>	Tris-buffered saline, pH 7.3, 0.5% BSA, 0.02% sodium azide
<b>Recommended Storage:</b>	Store at -20°C. Minimize freezing and thawing.
<b>Usage Summary:</b>	Immunohistochemistry: LS-B3236 was validated for use in immunohistochemistry on a panel of 21 formalin-fixed, paraffin-embedded (FFPE) human tissues after heat induced antigen retrieval in pH 6.0 citrate buffer. After incubation with the primary antibody, slides were incubated with biotinylated secondary antibody, followed by alkaline phosphatase-streptavidin and chromogen. The stained slides were evaluated by a pathologist to confirm staining specificity. The optimal working concentration for LS-B3236 was determined to be 3.75 ug/ml.
<b>Uses:</b>	IHC - Paraffin (3.75 µg/ml), Western blot (1:16000) & (0.05 - 1 µg/ml), ELISA (1:16000) (Optimal dilution to be determined by the researcher)
<b>Size:</b>	50 µg
<b>Concentration:</b>	0.5 mg/ml

**Immunohistochemistry Image:**



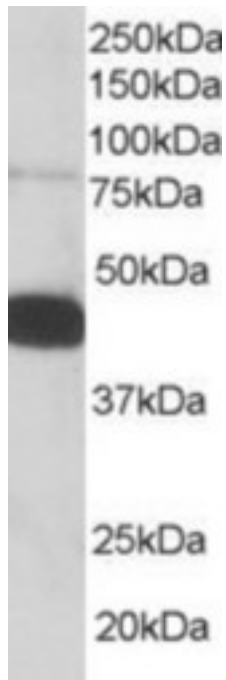
Anti-Pleckstrin antibody IHC of human vessel, platelets. Immunohistochemistry of formalin-fixed, paraffin-embedded tissue after heat-induced antigen retrieval. Antibody LS-B3236 concentration 75 ug/ml.

**Immunohistochemistry Image:**



Anti-Pleckstrin antibody IHC of human spleen. Immunohistochemistry of formalin-fixed, paraffin-embedded tissue after heat-induced antigen retrieval. Antibody LS-B3236 concentration 75 ug/ml.

**Western Blot Image:**



Antibody staining (0.05 ug/ml) of Human PBMC lysate (RIPA buffer, 35 ug total protein per lane). Primary incubated for 1 hour. Detected by Western blot of chemiluminescence.

**Requested From:**

Japan

Laboratory Reagent For In Vitro Research Use Only

Not for resale without prior written consent from LifeSpan BioSciences, Inc.

Created on 9/23/2014

© 2014 LifeSpan BioSciences