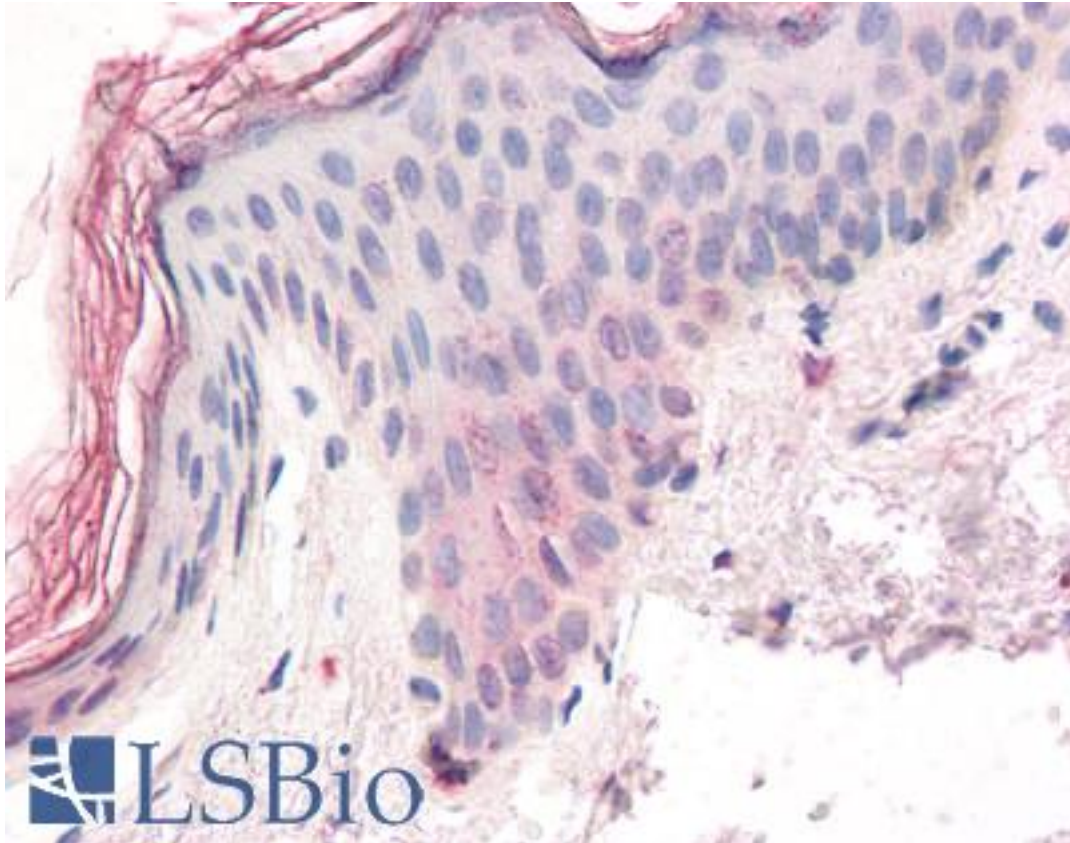


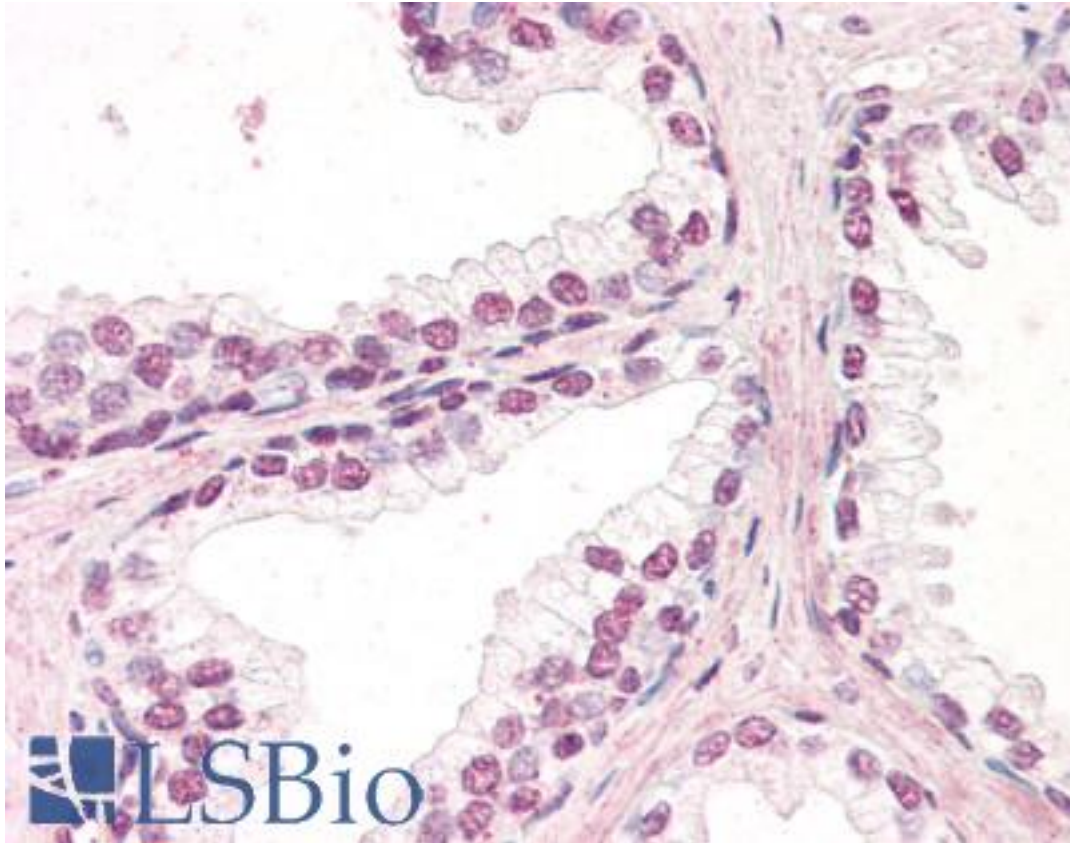
ZIC5 Goat anti-Human Polyclonal (C-Terminus) Antibody - LS-B3233 - LSBio	
<b>CatalogID:</b>	LS-B3233
<b>Validation:</b>	This antibody replaces catalog number LS-C55704. It has been validated for use in the following assays: IHC-P.
<b>Target:</b>	Zic family member 5 (ZIC5)
<b>Synonyms:</b>	ZIC5 Antibody, Zic family member 5 Antibody, Zinc finger protein ZIC 5 Antibody, Zinc family member 5 protein Antibody
<b>Family / Subfamily:</b>	Zinc Finger
<b>Host</b>	ZIC5 antibody was produced in Goat
<b>Clonality:</b>	Polyclonal
<b>Immunogen Species:</b>	ZIC5 antibody was raised against Human
<b>Antigen Type:</b>	Synthetic peptide
<b>Immunogen:</b>	ZIC5 antibody was raised against synthetic peptide C-EIYGNPEVVRTIH from the C-terminus of human ZIC5 (NP_149123.2). Percent identity by BLAST analysis: Human, Gorilla, Gibbon, Monkey, Marmoset (100%); Hamster, Elephant, Rabbit (92%); Mouse, Rat, Dog (85%).
<b>Specificity:</b>	Human ZIC5.
<b>Epitope:</b>	C-Terminus
<b>Reactivity:</b>	Human, Gorilla, Gibbon, Monkey
<b>Predicted Reactivity:</b>	Hamster, Rabbit
<b>Purification:</b>	Immunoaffinity purified
<b>Presentation:</b>	Tris-buffered saline, pH 7.3, 0.5% BSA, 0.02% sodium azide
<b>Recommended Storage:</b>	Store at -20°C. Minimize freezing and thawing.
<b>Usage Summary:</b>	Immunohistochemistry: LS-B3233 was validated for use in immunohistochemistry on a panel of 21 formalin-fixed, paraffin-embedded (FFPE) human tissues after heat induced antigen retrieval in pH 6.0 citrate buffer. After incubation with the primary antibody, slides were incubated with biotinylated secondary antibody, followed by alkaline phosphatase-streptavidin and chromogen. The stained slides were evaluated by a pathologist to confirm staining specificity. The optimal working concentration for LS-B3233 was determined to be 3.75 ug/ml.
<b>Uses:</b>	IHC - Paraffin (3.75 µg/ml), ELISA (1:128000) (Optimal dilution to be determined by the researcher)
<b>Uses Not Recommended:</b>	Western blot
<b>Size:</b>	50 µg
<b>Concentration:</b>	0.5 mg/ml

**Immunohistochemistry Image:**



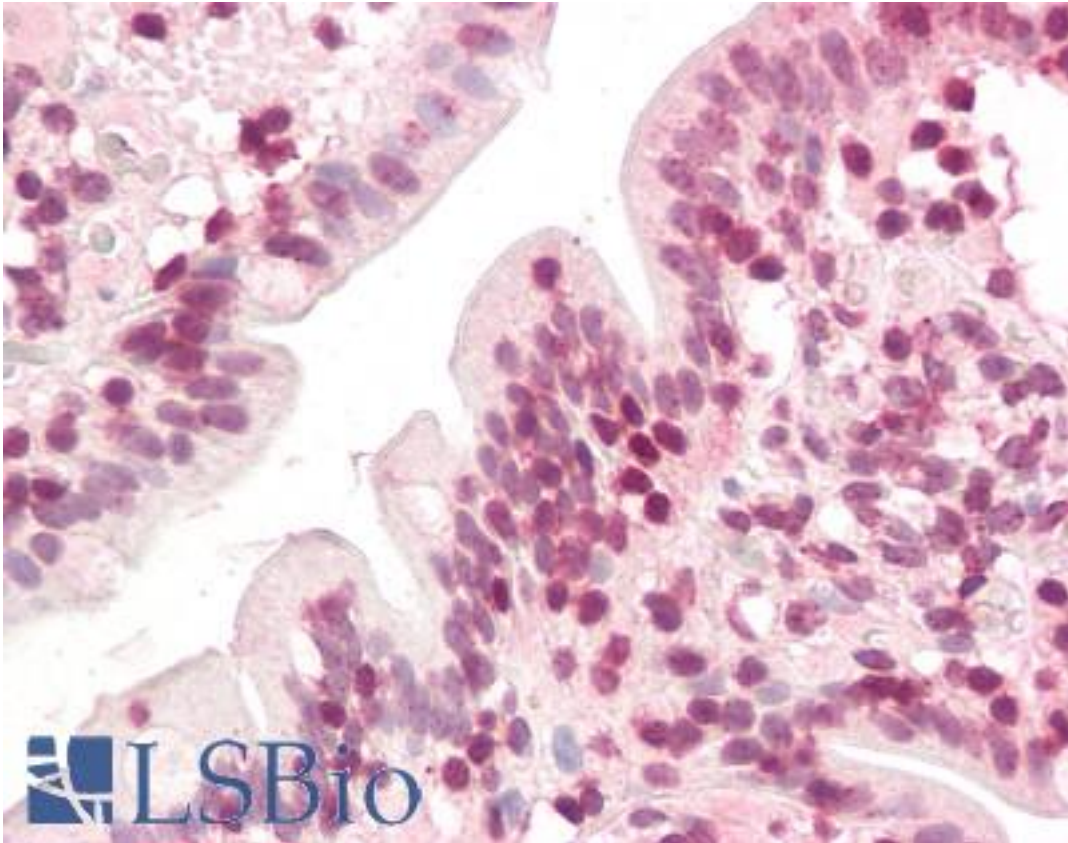
Anti-ZIC5 antibody IHC of human skin. Immunohistochemistry of formalin-fixed, paraffin-embedded tissue after heat-induced antigen retrieval. Antibody LS-B3233 concentration 3.75 ug/ml.

**Immunohistochemistry Image:**



Anti-ZIC5 antibody IHC of human prostate. Immunohistochemistry of formalin-fixed, paraffin-embedded tissue after heat-induced antigen retrieval. Antibody LS-B3233 concentration 3.75 ug/ml.

**Immunohistochemistry Image:**



Anti-ZIC5 antibody IHC of human small intestine. Immunohistochemistry of formalin-fixed, paraffin-embedded tissue after heat-induced antigen retrieval. Antibody LS-B3233 concentration 3.75 ug/ml.

**Requested From:**

Japan

Laboratory Reagent For In Vitro Research Use Only

Not for resale without prior written consent from LifeSpan BioSciences, Inc.

Created on 9/23/2014

© 2014 LifeSpan BioSciences