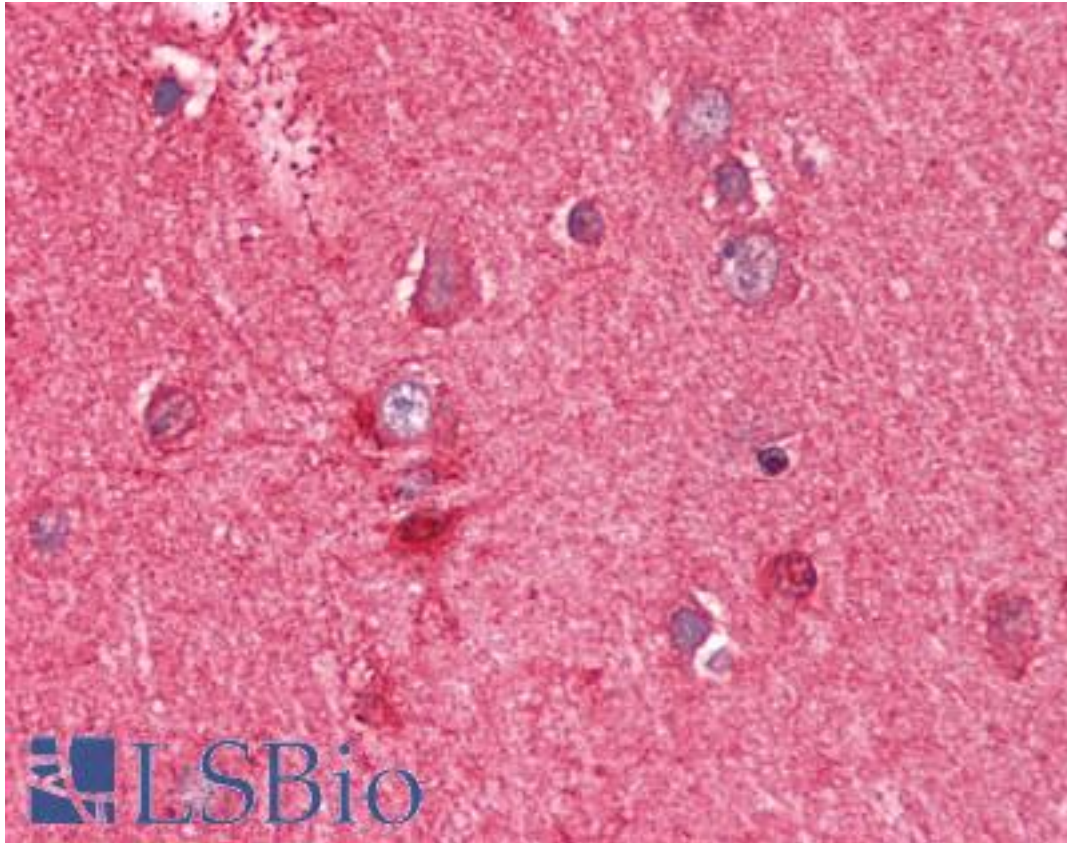


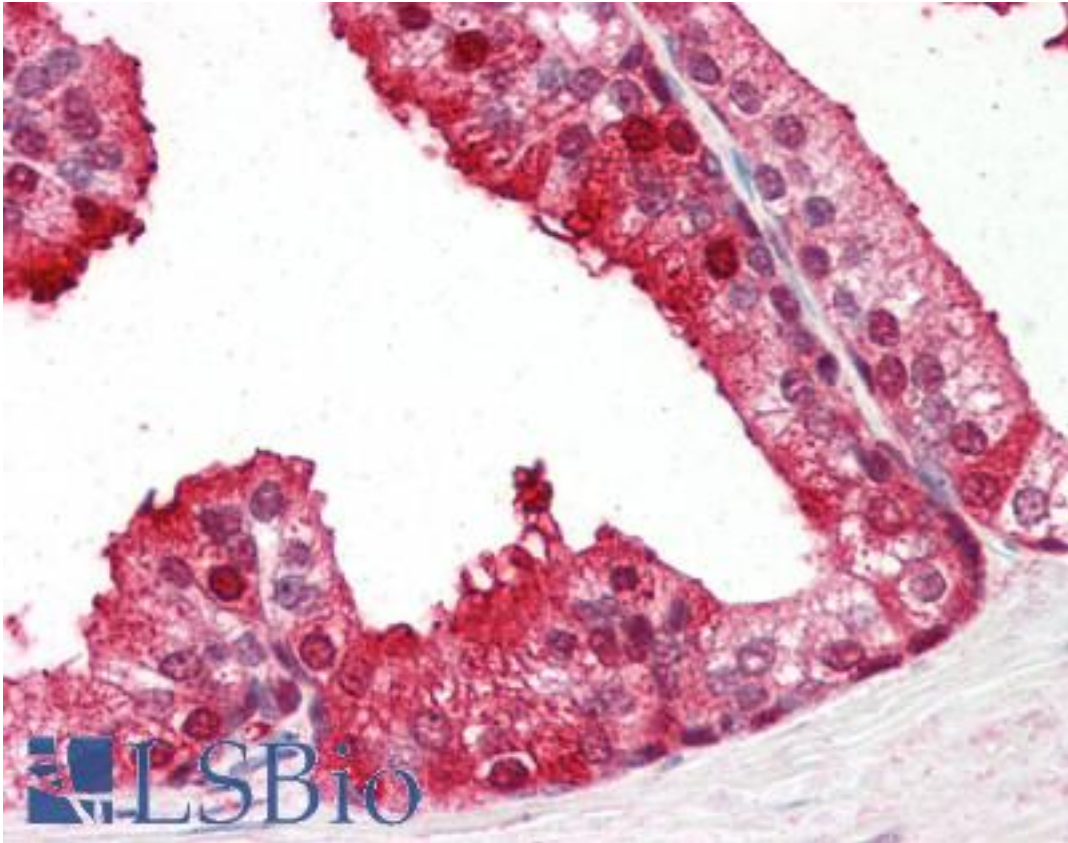
PEBP1 / RKIP Goat anti-Human Polyclonal (C-Terminus) Antibody - LS-B3230 - LSBio	
CatalogID:	LS-B3230
Validation:	This antibody replaces catalog number LS-C55257. It has been validated for use in the following assays: IHC-P.
Target:	phosphatidylethanolamine binding protein 1 (PEBP1)
Synonyms:	PEBP1 Antibody, HCNP Antibody, HCNPpp Antibody, PBP Antibody, Prostatic binding protein Antibody, Raf kinase inhibitor protein Antibody, Raf kinase inhibitory protein Antibody, Prostatic-binding protein Antibody, Neuropolypeptide h3 Antibody, PEBP Antibody, PEBP-1 Antibody, RKIP Antibody
Host	PEBP1 antibody was produced in Goat
Clonality:	Polyclonal
Immunogen Species:	PEBP1 / RKIP antibody was raised against Human
Antigen Type:	Synthetic peptide
Immunogen:	PEBP1 / RKIP antibody was raised against synthetic peptide C-DYVPKLYEQLSGK from the C-terminus of human PEBP1 (NP_002558.1). Percent identity by BLAST analysis: Human, Gorilla, Orangutan, Gibbon, Monkey, Marmoset, Mouse, Hamster, Panda, Bovine, Horse, Pig, Turkey, Chicken, Pike (100%); Dog, Rabbit, Catfish, Stickleback, Pufferfish, Eye worm, Drosophila, Tick, Trichina worm (92%); Opossum, Xenopus, Trout, Salmon, Zebrafish, Water flea (85%).
Specificity:	Human PEBP1.
Epitope:	C-Terminus
Reactivity:	Human, Gorilla, Orangutan, Gibbon, Monkey, Mouse, Bovine, Hamster, Horse, Pig, Chicken
Predicted Reactivity:	Dog, Rabbit, Drosophila
Purification:	Immunoaffinity purified
Presentation:	Tris-buffered saline, pH 7.3, 0.5% BSA, 0.02% sodium azide
Recommended Storage:	Store at -20°C. Minimize freezing and thawing.
Usage Summary:	Immunohistochemistry: LS-B3230 was validated for use in immunohistochemistry on a panel of 21 formalin-fixed, paraffin-embedded (FFPE) human tissues after heat induced antigen retrieval in pH 6.0 citrate buffer. After incubation with the primary antibody, slides were incubated with biotinylated secondary antibody, followed by alkaline phosphatase-streptavidin and chromogen. The stained slides were evaluated by a pathologist to confirm staining specificity. The optimal working concentration for LS-B3230 was determined to be 1.5 ug/ml.
Uses:	IHC - Paraffin (1.5 µg/ml), Western blot (1:16000) & (0.01 - 0.03 µg/ml), ELISA (1:16000) (Optimal dilution to be determined by the researcher)
Size:	50 µg
Concentration:	0.5 mg/ml

Immunohistochemistry Image:



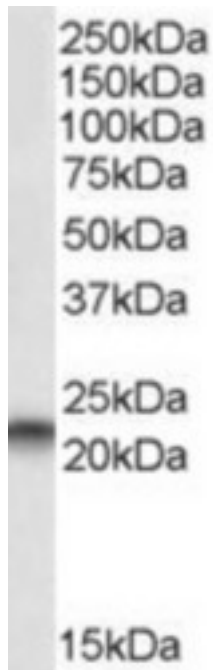
Anti-PEBP1 antibody IHC of human brain, cortex. Immunohistochemistry of formalin-fixed, paraffin-embedded tissue after heat-induced antigen retrieval. Antibody LS-B3230 concentration 5 ug/ml.

Immunohistochemistry Image:



Anti-PEBP1 antibody IHC of human prostate. Immunohistochemistry of formalin-fixed, paraffin-embedded tissue after heat-induced antigen retrieval. Antibody LS-B3230 concentration 5 ug/ml.

Western Blot Image:



Antibody staining (0.01 ug/ml) of A549 lysate (RIPA buffer, 35 ug total protein per lane).
Primary incubated for 1 hour. Detected by Western blot of chemiluminescence.

Requested From:

Japan

Laboratory Reagent For In Vitro Research Use Only

Not for resale without prior written consent from LifeSpan BioSciences, Inc.

Created on 9/23/2014

© 2014 LifeSpan BioSciences