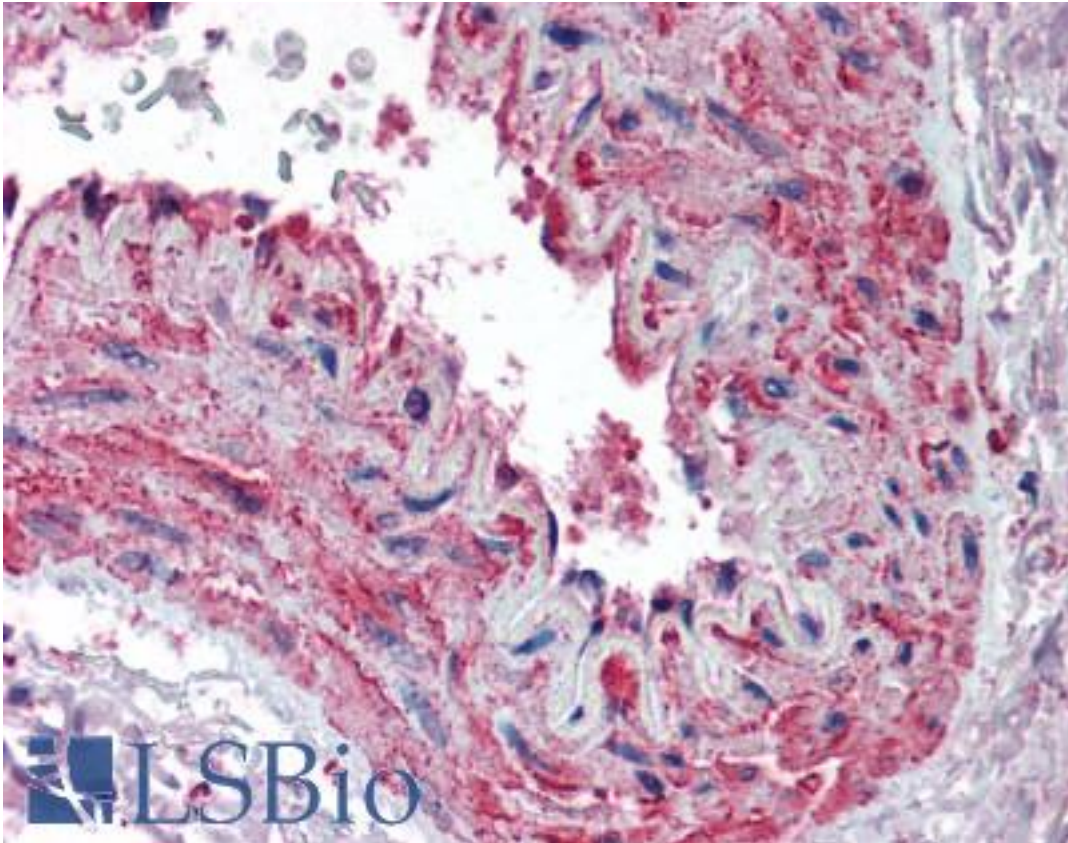


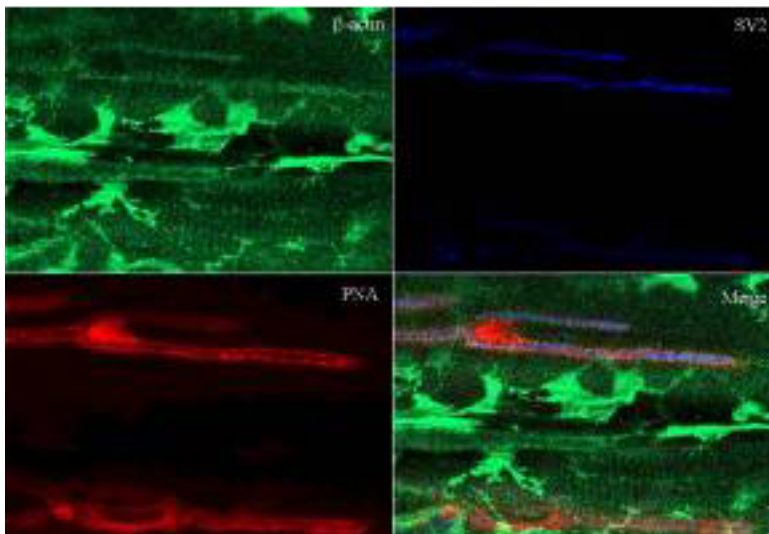
ACTB / Beta Actin Rabbit anti-Human Polyclonal (aa359-368) Antibody - LS-B323 - LSBio	
<b>CatalogID:</b>	LS-B323
<b>Validation:</b>	This antibody replaces catalog number LS-C19049. It has been validated for use in the following assays: IHC.
<b>Target:</b>	actin, beta (ACTB)
<b>Synonyms:</b>	ACTB Antibody, Actin, cytoplasmic 1 Antibody, Beta-actin Antibody, Beta actin Antibody, BRWS1 Antibody, Actin, beta Antibody, Beta cytoskeletal actin Antibody, PS1TP5-binding protein 1 Antibody, PS1TP5BP1 Antibody
<b>Host</b>	ACTB antibody was produced in Rabbit
<b>Clonality:</b>	Polyclonal
<b>Immunogen Species:</b>	ACTB / Beta Actin antibody was raised against Human
<b>Antigen Type:</b>	Synthetic peptide
<b>Immunogen:</b>	ACTB / Beta Actin antibody was raised against synthetic peptide from human ACTB / Beta-actin.
<b>Specificity:</b>	Amino acids 359-368 of Human beta Actin.
<b>Epitope:</b>	aa359-368
<b>Reactivity:</b>	Human, Monkey, Mouse, Rat, Bovine, Goat, Guinea pig, Hamster, Pig, Sheep, Frog
<b>Purification:</b>	Immunoaffinity purified
<b>Presentation:</b>	0.02 M potassium phosphate, 0.15 M sodium chloride, pH 7.2, 0.01% sodium azide.
<b>Recommended Storage:</b>	Short term 4°C, long term aliquot and store at -20°C, avoid freeze thaw cycles. Store undiluted.
<b>Usage Summary:</b>	Immunohistochemistry: LS-B323 was validated for use in immunohistochemistry on a panel of 21 formalin-fixed, paraffin-embedded (FFPE) human tissues after heat induced antigen retrieval in pH 6.0 citrate buffer. After incubation with the primary antibody, slides were incubated with biotinylated secondary antibody, followed by alkaline phosphatase-streptavidin and chromogen. The stained slides were evaluated by a pathologist to confirm staining specificity. The optimal working concentration for LS-B323 was determined to be 5 ug/ml. Antibody has been tested in IHC with human and frog samples and in Western blot with human and mouse samples. It is expected to react with a wide range of species due to sequence homology.
<b>Uses:</b>	IHC - Paraffin (5 µg/ml), Immunofluorescence (1:500 - 1:2000), Western blot (1:1000 - 1:4000), ELISA (1:10000 - 1:40000) (Optimal dilution to be determined by the researcher)
<b>Size:</b>	50 µg
<b>Concentration:</b>	0.5 mg/ml

**Immunohistochemistry Image:**



Anti-Beta Actin antibody IHC of human skeletal muscle, vessel. Immunohistochemistry of formalin-fixed, paraffin-embedded tissue after heat-induced antigen retrieval. Antibody LS-B323 concentration 5 ug/ml.

**Immunofluorescence Image:**



Anti-Beta Actin Antibody. Tissue: sections 4.2 mm thick of rana pipiens tissue. Fixation: formalin fixed paraffin embedded. Antigen retrieval: not required. Primary antibody: Beta Actin antibody at 1:200 for 1 h at RT. Secondary antibody: Peroxidase rabbit secondary antibody at 1:10,000 for 45 min at RT. Localization: Beta Actin is at the neuromuscular junction. Staining: Beta Actin as precipitated green signal with red and blue counterstain.

**Requested From:**

Japan

Laboratory Reagent For In Vitro Research Use Only

Not for resale without prior written consent from LifeSpan BioSciences, Inc.

Created on 9/23/2014

© 2014 LifeSpan BioSciences