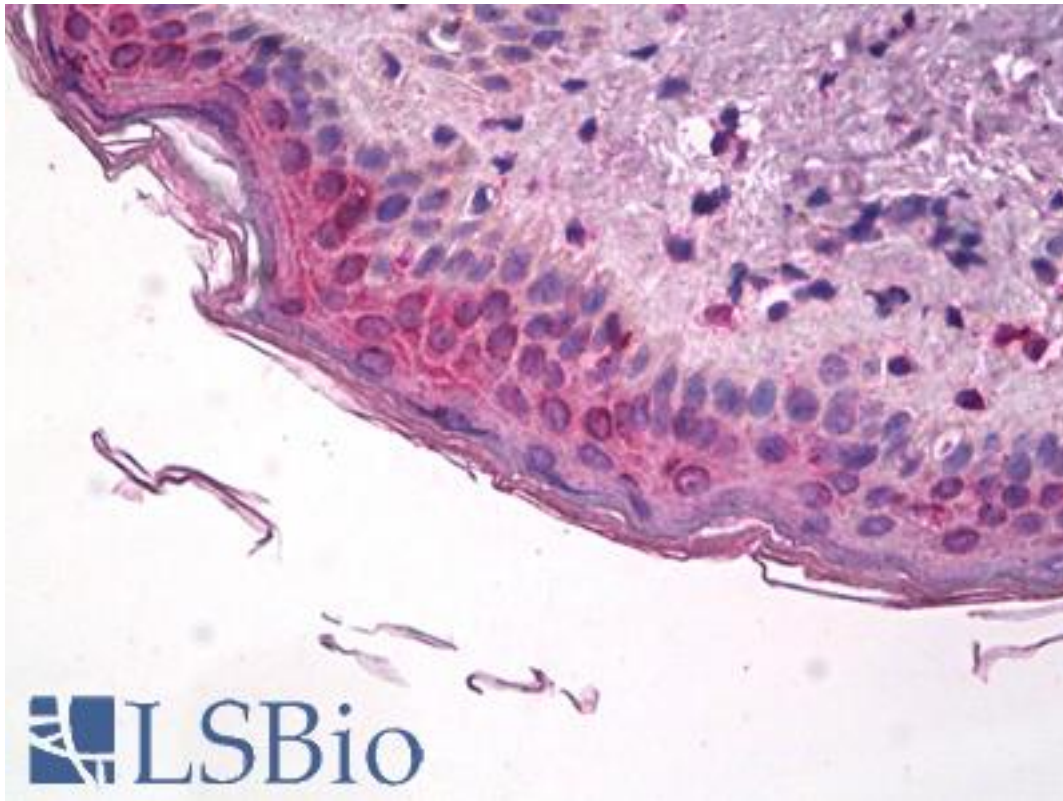


PTGS1 / COX1 / COX-1 Goat anti-Human Polyclonal (C-Terminus) Antibody - LS-B3229 - LSBio	
CatalogID:	LS-B3229
Validation:	This antibody replaces catalog number LS-C20147. It has been validated for use in the following assays: IHC-P.
Target:	prostaglandin-endoperoxide synthase 1 (prostaglandin G/H synthase and cyclooxygenase) (PTGS1)
Synonyms:	PTGS1 Antibody, COX1 Antibody, Cyclooxygenase-1 Antibody, COX-1 Antibody, PES-1 Antibody, PGH synthase 1 Antibody, Prostaglandin G/H synthase 1 Antibody, PTGHS Antibody, COX3 Antibody, PCOX1 Antibody, PGG/HS Antibody, PGHS-1 Antibody, PGHS1 Antibody, PHS 1 Antibody, PHS1 Antibody, Prostaglandin H2 synthase 1 Antibody
Host	PTGS1 antibody was produced in Goat
Clonality:	Polyclonal
Immunogen Species:	PTGS1 / COX1 / COX-1 antibody was raised against Human
Antigen Type:	Synthetic peptide
Immunogen:	PTGS1 / COX1 / COX-1 antibody was raised against synthetic peptide C-QDDGPAVERPSTEL from the C-terminus of human PTGS1 / COX-1 (NP_000953.2; NP_542158.1). Percent identity by BLAST analysis: Human, Gibbon, Monkey (100%); Marmoset, Horse (93%); Panda, Dog, Bat, Pig (86%).
Specificity:	Human PTGS1 / COX-1. This antibody is expected to recognise both human isoforms of this protein according to NP_000953.2 and NP_542158.1.
Epitope:	C-Terminus
Reactivity:	Human, Gibbon
Predicted Reactivity:	Monkey, Horse
Purification:	Immunoaffinity purified
Presentation:	Tris-buffered saline, pH 7.3, 0.5% BSA, 0.02% sodium azide
Recommended Storage:	Short term 4°C, long term aliquot and store at -20°C, avoid freeze thaw cycles.
Usage Summary:	Immunohistochemistry: LS-B3229 was validated for use in immunohistochemistry on a panel of 21 formalin-fixed, paraffin-embedded (FFPE) human tissues after heat induced antigen retrieval in pH 6.0 citrate buffer. After incubation with the primary antibody, slides were incubated with biotinylated secondary antibody, followed by alkaline phosphatase-streptavidin and chromogen. The stained slides were evaluated by a pathologist to confirm staining specificity. The optimal working concentration for LS-B3229 was determined to be 3.75 µg/ml.
Uses:	IHC - Paraffin (3.75 µg/ml), Western blot (1 - 3 µg/ml), ELISA (Optimal dilution to be determined by the researcher)
Size:	50 µg

Immunohistochemistry Image:



Anti-PTGS1 / COX-1 antibody IHC of human skin. Immunohistochemistry of formalin-fixed, paraffin-embedded tissue after heat-induced antigen retrieval. Antibody LS-B3229 concentration 3.75 ug/ml.

Western Blot Image:



Staining (1 ug/ml) of HeLa lysate (RIPA buffer, 30 ug total protein per lane). Primary incubated for 1 hour. Detected using chemiluminescence.

Requested From:

Japan

Laboratory Reagent For In Vitro Research Use Only

Not for resale without prior written consent from LifeSpan BioSciences, Inc.

Created on 9/23/2014

© 2014 LifeSpan BioSciences