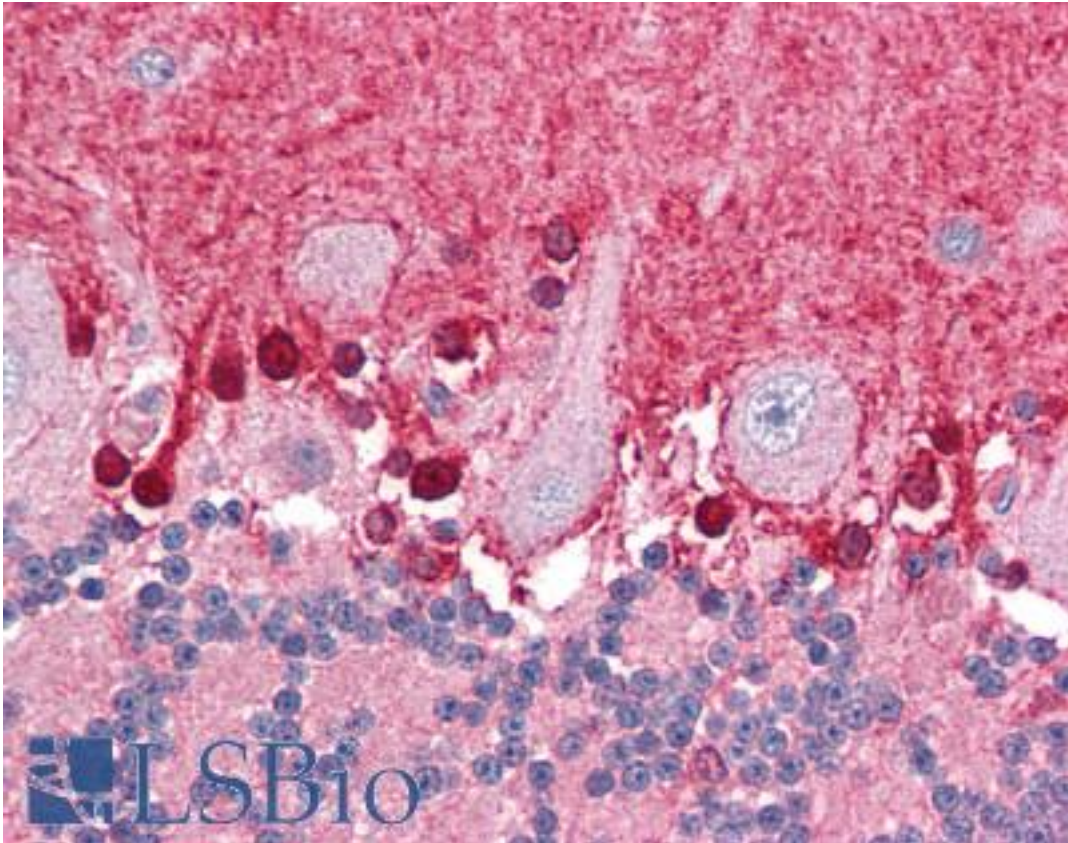


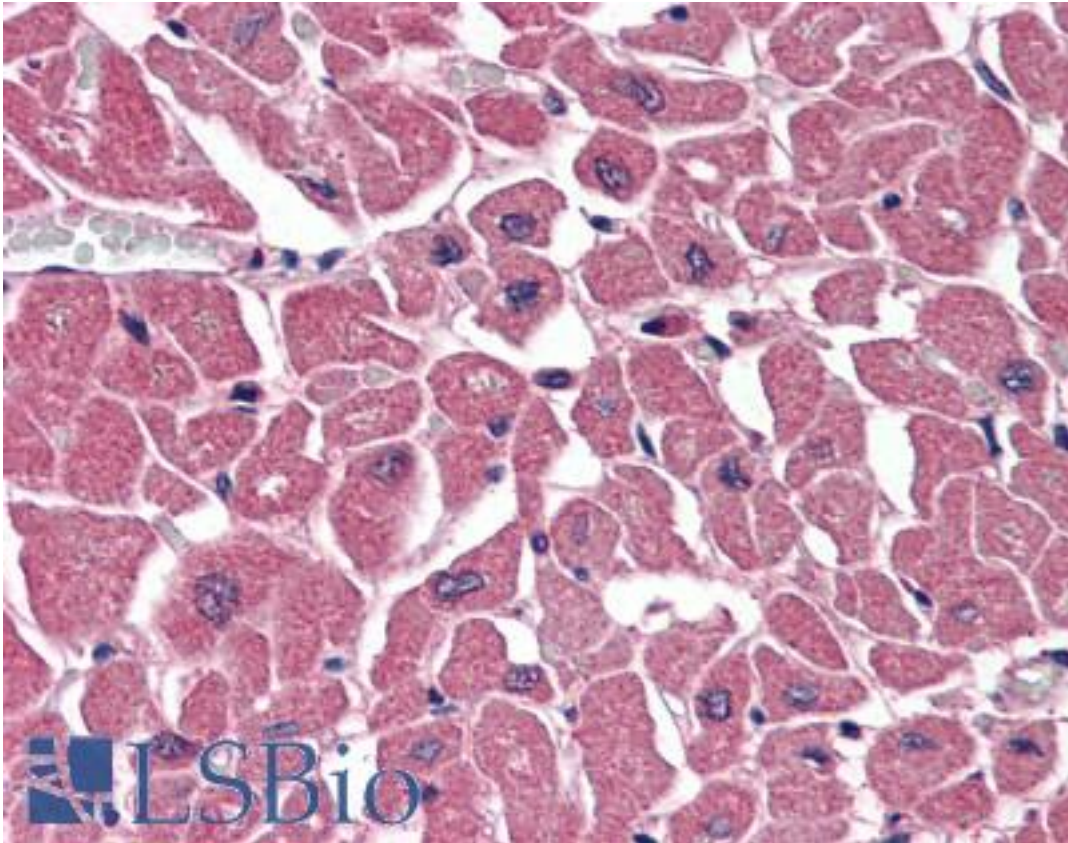
BPOZ / ABTB1 Goat anti-Human Polyclonal (C-Terminus) Antibody - LS-B3228 - LSBio	
<b>CatalogID:</b>	LS-B3228
<b>Validation:</b>	This antibody replaces catalog number LS-C54589. It has been validated for use in the following assays: IHC-P.
<b>Target:</b>	ankyrin repeat and BTB (POZ) domain containing 1 (ABTB1)
<b>Synonyms:</b>	ABTB1 Antibody, BPOZ Antibody, BTB3 Antibody, EF1ABP Antibody, PP2259 Antibody, BTBD21 Antibody
<b>Host</b>	ABTB1 antibody was produced in Goat
<b>Clonality:</b>	Polyclonal
<b>Immunogen Species:</b>	BPOZ / ABTB1 antibody was raised against Human
<b>Antigen Type:</b>	Synthetic peptide
<b>Immunogen:</b>	BPOZ / ABTB1 antibody was raised against synthetic peptide RALEDLLVSI <del>GLDC</del> from the C-terminus of human ABTB1 / BPOZ (NP_115937.1; NP_742024.1; NP_742025.1). Percent identity by BLAST analysis: Human, Gorilla, Monkey, Marmoset, Mouse, Hamster, Panda, Dog, Horse (100%); Gibbon, Rat, Bat (93%); Elephant, Bovine (86%).
<b>Specificity:</b>	Human ABTB1 / BPOZ. This antibody is expected to recognise all reported isoforms (NP_115937.1; NP_742024.1; NP_742025.1).
<b>Epitope:</b>	C-Terminus
<b>Reactivity:</b>	Human, Gorilla, Monkey, Mouse, Dog, Hamster, Horse
<b>Predicted Reactivity:</b>	Gibbon, Rat, Bat
<b>Purification:</b>	Immunoaffinity purified
<b>Presentation:</b>	Tris-buffered saline, pH 7.3, 0.5% BSA, 0.02% sodium azide
<b>Recommended Storage:</b>	Store at -20°C. Minimize freezing and thawing.
<b>Usage Summary:</b>	Immunohistochemistry: LS-B3228 was validated for use in immunohistochemistry on a panel of 21 formalin-fixed, paraffin-embedded (FFPE) human tissues after heat induced antigen retrieval in pH 6.0 citrate buffer. After incubation with the primary antibody, slides were incubated with biotinylated secondary antibody, followed by alkaline phosphatase-streptavidin and chromogen. The stained slides were evaluated by a pathologist to confirm staining specificity. The optimal working concentration for LS-B3228 was determined to be 3.75 ug/ml.
<b>Uses:</b>	IHC - Paraffin (3.75 µg/ml), Western blot (1:32000) & (1 - 3 µg/ml), ELISA (1:32000) (Optimal dilution to be determined by the researcher)
<b>Size:</b>	50 µg
<b>Concentration:</b>	0.5 mg/ml

**Immunohistochemistry Image:**



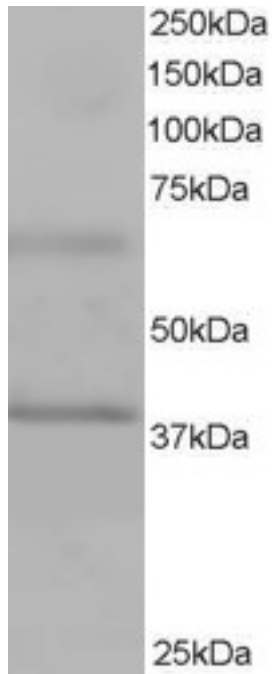
Anti-ABTB1 / BPOZ antibody IHC of human brain, cerebellum. Immunohistochemistry of formalin-fixed, paraffin-embedded tissue after heat-induced antigen retrieval. Antibody LS-B3228 concentration 75 ug/ml.

**Immunohistochemistry Image:**



Anti-ABTB1 / BPOZ antibody IHC of human heart. Immunohistochemistry of formalin-fixed, paraffin-embedded tissue after heat-induced antigen retrieval. Antibody LS-B3228 concentration 75 ug/ml.

**Western Blot Image:**



Antibody staining (1 ug/ml) of Human Heart lysate (RIPA buffer, 35 ug total protein per lane). Primary incubated for 1 hour. Detected by Western blot of chemiluminescence.

**Requested From:**

Japan

Laboratory Reagent For In Vitro Research Use Only

Not for resale without prior written consent from LifeSpan BioSciences, Inc.

Created on 9/23/2014

© 2014 LifeSpan BioSciences