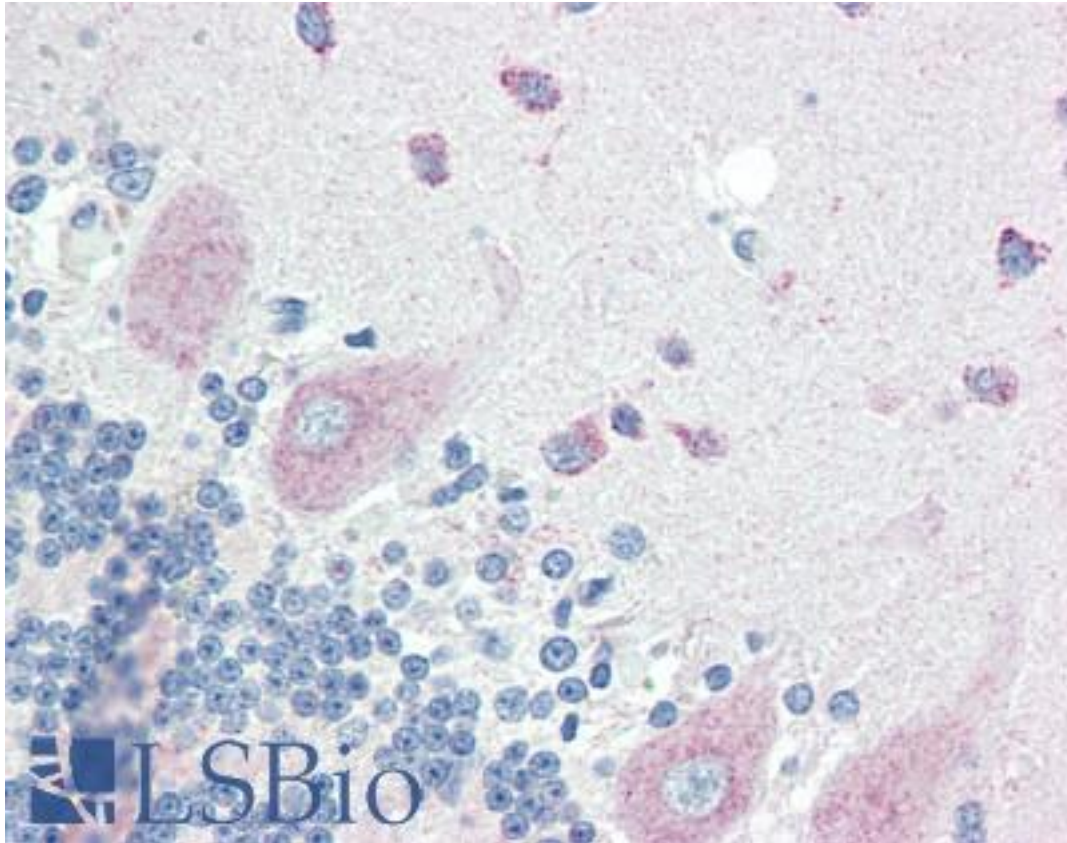


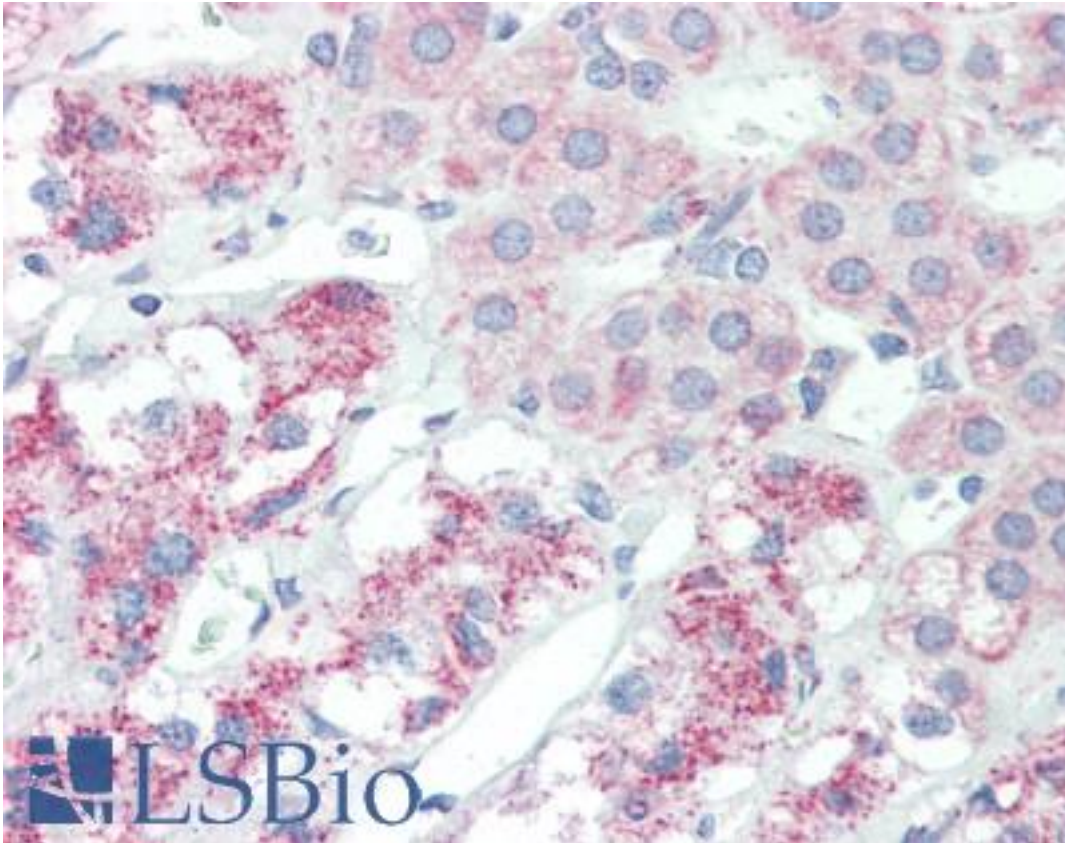
SLITRK6 Rabbit anti-Human Polyclonal (Internal) Antibody - LS-B3220 - LSBio	
CatalogID:	LS-B3220
Validation:	This antibody replaces catalog number LS-C53261. It has been validated for use in the following assays: IHC-P.
Target:	SLIT and NTRK-like Family, Member 6 (SLITRK6)
Synonyms:	SLITRK6 Antibody, Slit and trk like gene 6 Antibody, SLIT and NTRK-like protein 6 Antibody
Host	SLITRK6 antibody was produced in Rabbit
Clonality:	Polyclonal
Immunogen Species:	SLITRK6 antibody was raised against Human
Immunogen:	SLITRK6 antibody was raised against 13amino acid peptide from near the center of human Slitrk6.
Epitope:	Internal
Reactivity:	Human, Mouse, Rat
Purification:	Immunoaffinity purified
Presentation:	PBS, 0.02% sodium azide.
Recommended Storage:	Short term 4°C, long term aliquot and store at -20°C, avoid freeze thaw cycles. Store undiluted.
Usage Summary:	Immunohistochemistry: LS-B3220 was validated for use in immunohistochemistry on a panel of 21 formalin-fixed, paraffin-embedded (FFPE) human tissues after heat induced antigen retrieval in pH 6.0 citrate buffer. After incubation with the primary antibody, slides were incubated with biotinylated secondary antibody, followed by alkaline phosphatase-streptavidin and chromogen. The stained slides were evaluated by a pathologist to confirm staining specificity. The optimal working concentration for LS-B3220 was determined to be 10 ug/ml.
Uses:	IHC - Paraffin (10 µg/ml), Western blot (0.5 - 1 µg/ml), ELISA (Optimal dilution to be determined by the researcher)
Size:	50 µg
Concentration:	1 mg/ml

Immunohistochemistry Image:



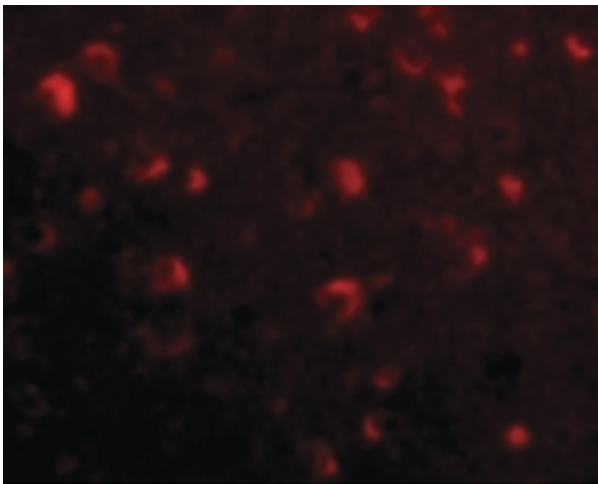
Anti-SLITRK6 antibody IHC of human brain, cerebellum. Immunohistochemistry of formalin-fixed, paraffin-embedded tissue after heat-induced antigen retrieval. Antibody LS-B3220 concentration 10 ug/ml.

Immunohistochemistry Image:



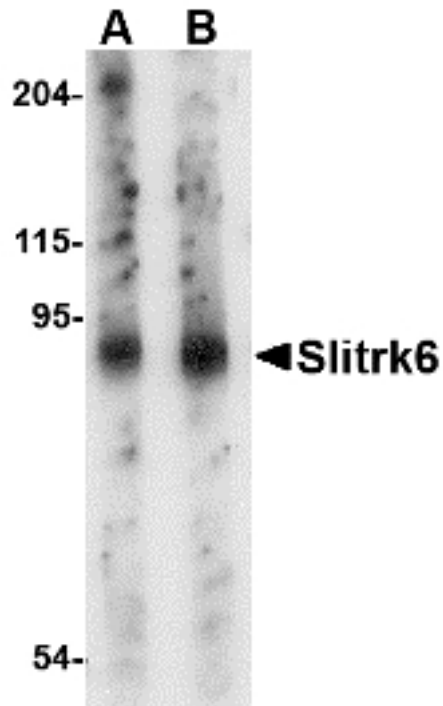
Anti-SLITRK6 antibody IHC of human adrenal. Immunohistochemistry of formalin-fixed, paraffin-embedded tissue after heat-induced antigen retrieval. Antibody LS-B3220 concentration 10 ug/ml.

Immunofluorescence Image:



Immunofluorescence of Slitrk6 in Human Brain cells with Slitrk6 antibody at 20 ug/ml.

Western Blot Image:



Western blot of Slitrk6 in mouse lung tissue lysate with Slitrk6 antibody at (A) 0.5 and (B) 1 ug/ml.

Requested From:

Japan

Laboratory Reagent For In Vitro Research Use Only

Not for resale without prior written consent from LifeSpan BioSciences, Inc.

Created on 9/23/2014

© 2014 LifeSpan BioSciences