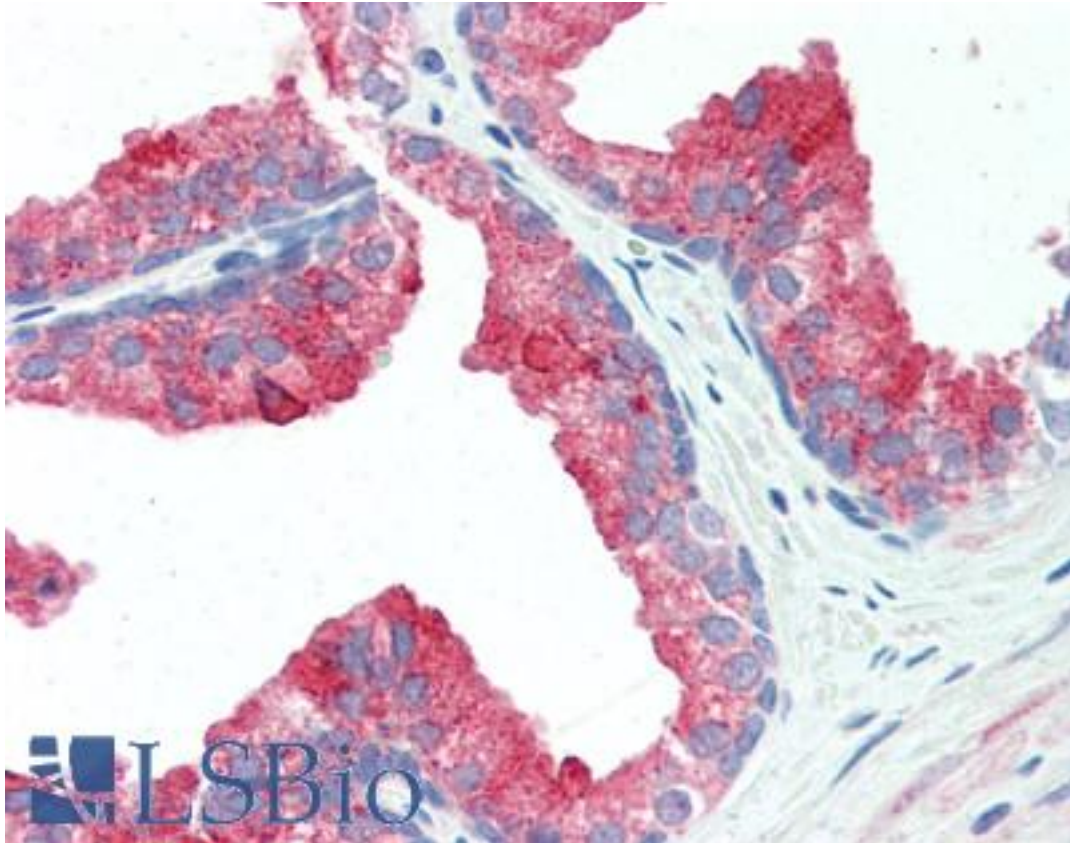


**APG12 / ATG12 Rabbit anti-Human Polyclonal (Internal) Antibody - LS-B3216 - LSBio**

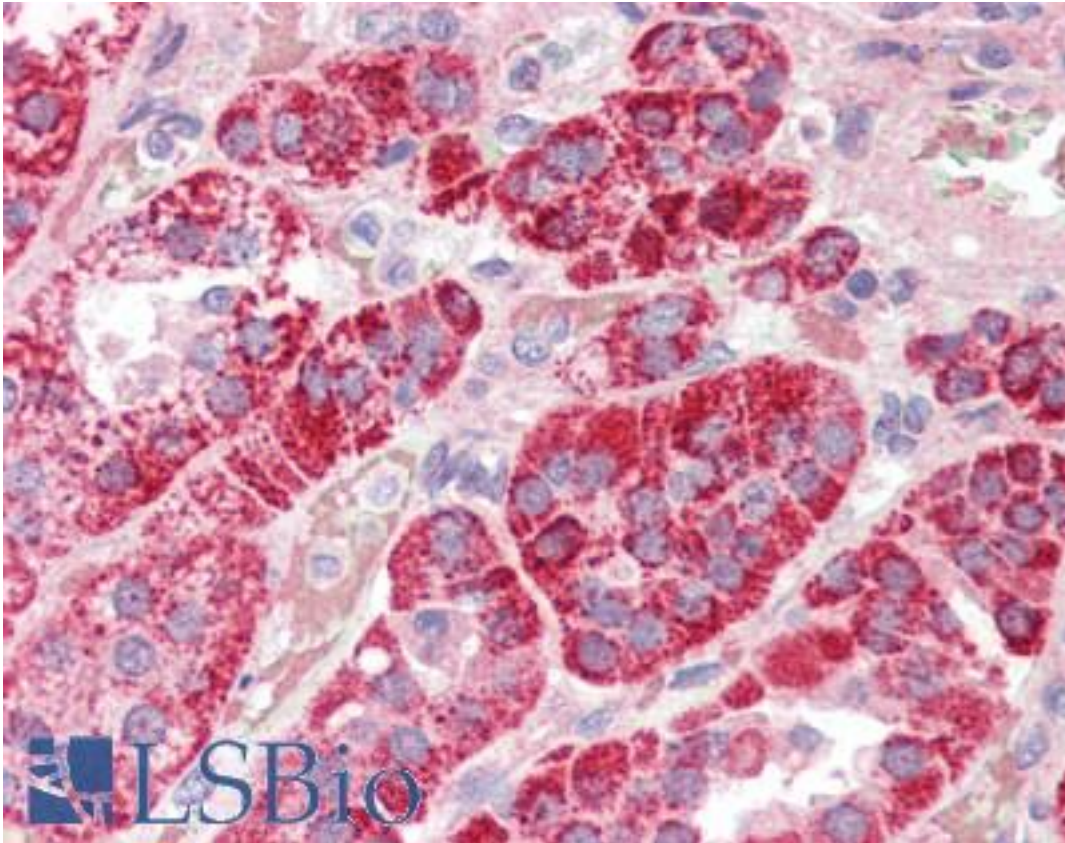
<b>CatalogID:</b>	LS-B3216
<b>Validation:</b>	This antibody replaces catalog number LS-C53241. It has been validated for use in the following assays: IHC-P.
<b>Target:</b>	autophagy related 12 (ATG12)
<b>Synonyms:</b>	ATG12 Antibody, Autophagy-related protein 12 Antibody, APG12L Antibody, Autophagy related 12 Antibody, FBR93 Antibody, APG12 Antibody, APG12-like Antibody, Ubiquitin-like protein ATG12 Antibody, HAPG12 Antibody
<b>Host</b>	ATG12 antibody was produced in Rabbit
<b>Clonality:</b>	Polyclonal
<b>Immunogen Species:</b>	APG12 / ATG12 antibody was raised against Human
<b>Immunogen:</b>	APG12 / ATG12 antibody was raised against 15 amino acid peptide from near the center of human ATG12.
<b>Epitope:</b>	Internal
<b>Reactivity:</b>	Human, Mouse, Rat
<b>Purification:</b>	Immunoaffinity purified
<b>Presentation:</b>	PBS, 0.02% sodium azide.
<b>Recommended Storage:</b>	Short term 4°C, long term aliquot and store at -20°C, avoid freeze thaw cycles. Store undiluted.
<b>Usage Summary:</b>	Immunohistochemistry: LS-B3216 was validated for use in immunohistochemistry on a panel of 21 formalin-fixed, paraffin-embedded (FFPE) human tissues after heat induced antigen retrieval in pH 6.0 citrate buffer. After incubation with the primary antibody, slides were incubated with biotinylated secondary antibody, followed by alkaline phosphatase-streptavidin and chromogen. The stained slides were evaluated by a pathologist to confirm staining specificity. The optimal working concentration for LS-B3216 was determined to be 5 ug/ml.
<b>Uses:</b>	IHC - Paraffin (5 µg/ml), Western blot (0.5 - 1 µg/ml), ELISA (Optimal dilution to be determined by the researcher)
<b>Size:</b>	50 µg
<b>Concentration:</b>	1 mg/ml

**Immunohistochemistry Image:**



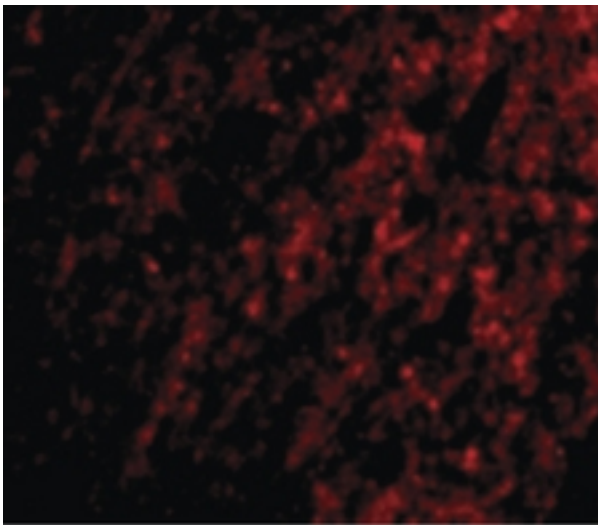
Anti-ATG12 antibody IHC of human prostate. Immunohistochemistry of formalin-fixed, paraffin-embedded tissue after heat-induced antigen retrieval. Antibody LS-B3216 concentration 5 ug/ml.

**Immunohistochemistry Image:**



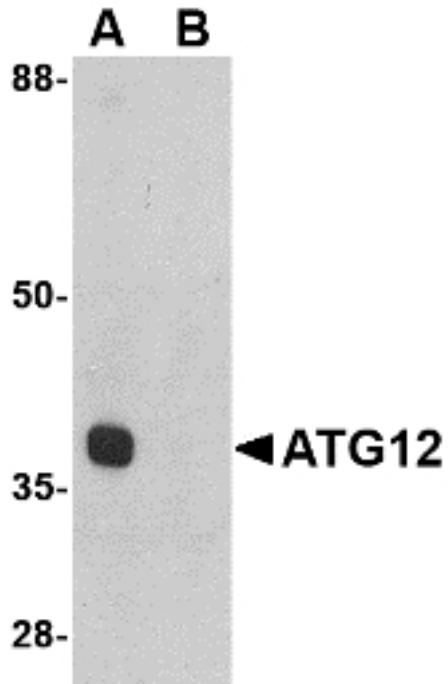
Anti-ATG12 antibody IHC of human adrenal. Immunohistochemistry of formalin-fixed, paraffin-embedded tissue after heat-induced antigen retrieval. Antibody LS-B3216 concentration 5 ug/ml.

**Immunofluorescence Image:**



Immunofluorescence of ATG12 in Human Brain cells with ATG12 antibody at 20 ug/ml.

**Western Blot Image:**



Western blot of ATG12 in mouse heart tissue lysate with ATG12 antibody at 1 ug/ml in (A) the absence and (B) the presence of blocking peptide.

**Requested From:**

Japan

Laboratory Reagent For In Vitro Research Use Only

Not for resale without prior written consent from LifeSpan BioSciences, Inc.

Created on 9/23/2014

© 2014 LifeSpan BioSciences