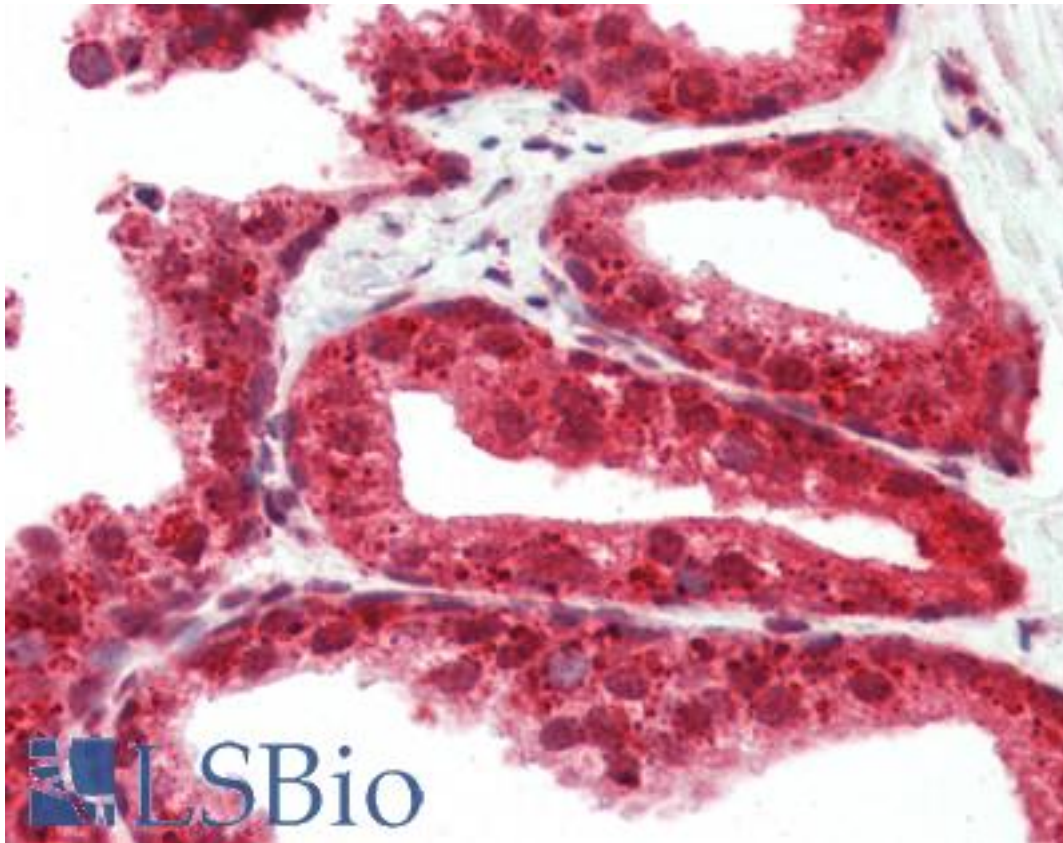


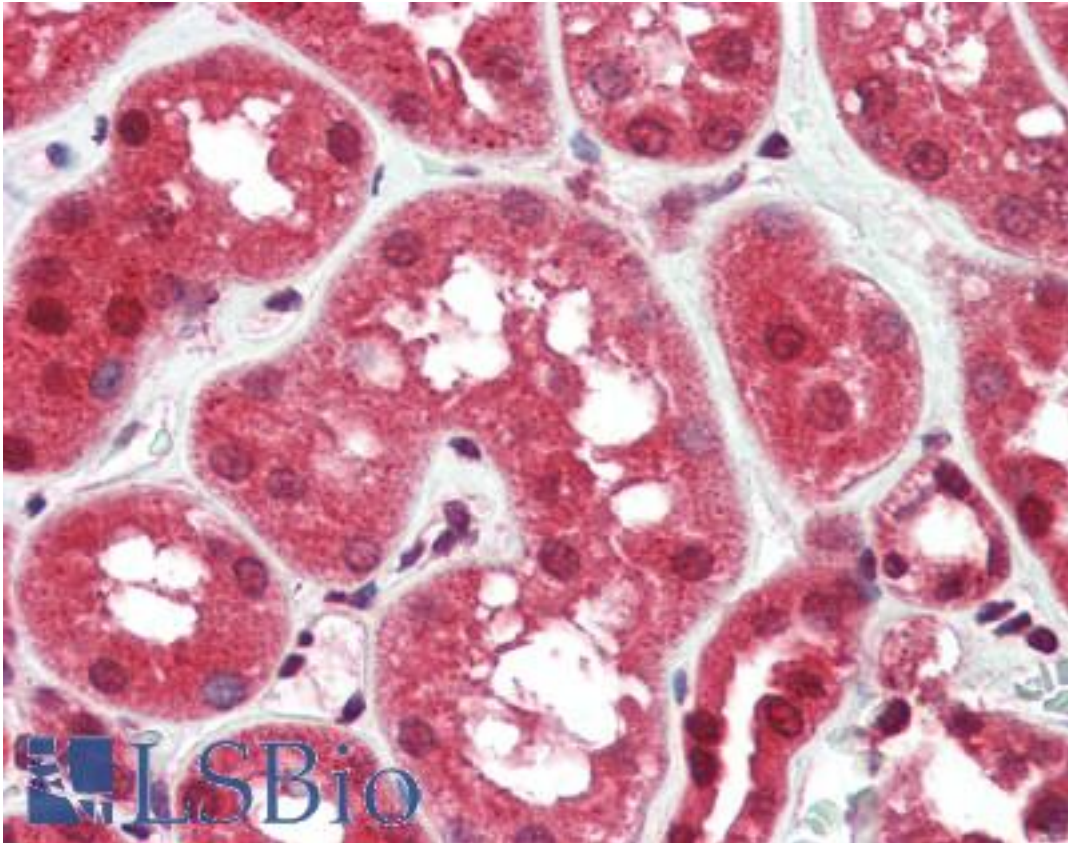
RASD2 / RHES / DEXRAS1 Rabbit anti-Human Polyclonal (N-Terminus) Antibody - LS-B3212 - LSBio	
CatalogID:	LS-B3212
Validation:	This antibody replaces catalog number LS-C53215. It has been validated for use in the following assays: IHC-P.
Target:	RASD family, member 2 (RASD2)
Synonyms:	RASD2 Antibody, DEXRAS1 Antibody, GTP-binding protein Rhes Antibody, RASD family, member 2 Antibody, Rhes Antibody, TEM2 Antibody, Tumor endothelial marker 2 Antibody, MGC:4834 Antibody
Family / Subfamily:	Ras GTPase superfamily IPR001806 / not assigned-Ras GTPase superfamily IPR001806
Host	RASD2 antibody was produced in Rabbit
Clonality:	Polyclonal
Immunogen Species:	RASD2 / RHES / DEXRAS1 antibody was raised against Human
Immunogen:	RASD2 / RHES / DEXRAS1 antibody was raised against 16 amino acid peptide near the amino terminus of the human TEM2.
Epitope:	N-Terminus
Reactivity:	Human, Mouse, Rat
Purification:	Immunoaffinity purified
Presentation:	PBS, 0.02% sodium azide.
Recommended Storage:	Short term 4°C, long term aliquot and store at -20°C, avoid freeze thaw cycles. Store undiluted.
Usage Summary:	Immunohistochemistry: LS-B3212 was validated for use in immunohistochemistry on a panel of 21 formalin-fixed, paraffin-embedded (FFPE) human tissues after heat induced antigen retrieval in pH 6.0 citrate buffer. After incubation with the primary antibody, slides were incubated with biotinylated secondary antibody, followed by alkaline phosphatase-streptavidin and chromogen. The stained slides were evaluated by a pathologist to confirm staining specificity. The optimal working concentration for LS-B3212 was determined to be 2.5 ug/ml.
Uses:	IHC - Paraffin (2.5 µg/ml), Western blot (1 - 2 µg/ml), ELISA (Optimal dilution to be determined by the researcher)
Size:	50 µg
Concentration:	1 mg/ml

Immunohistochemistry Image:



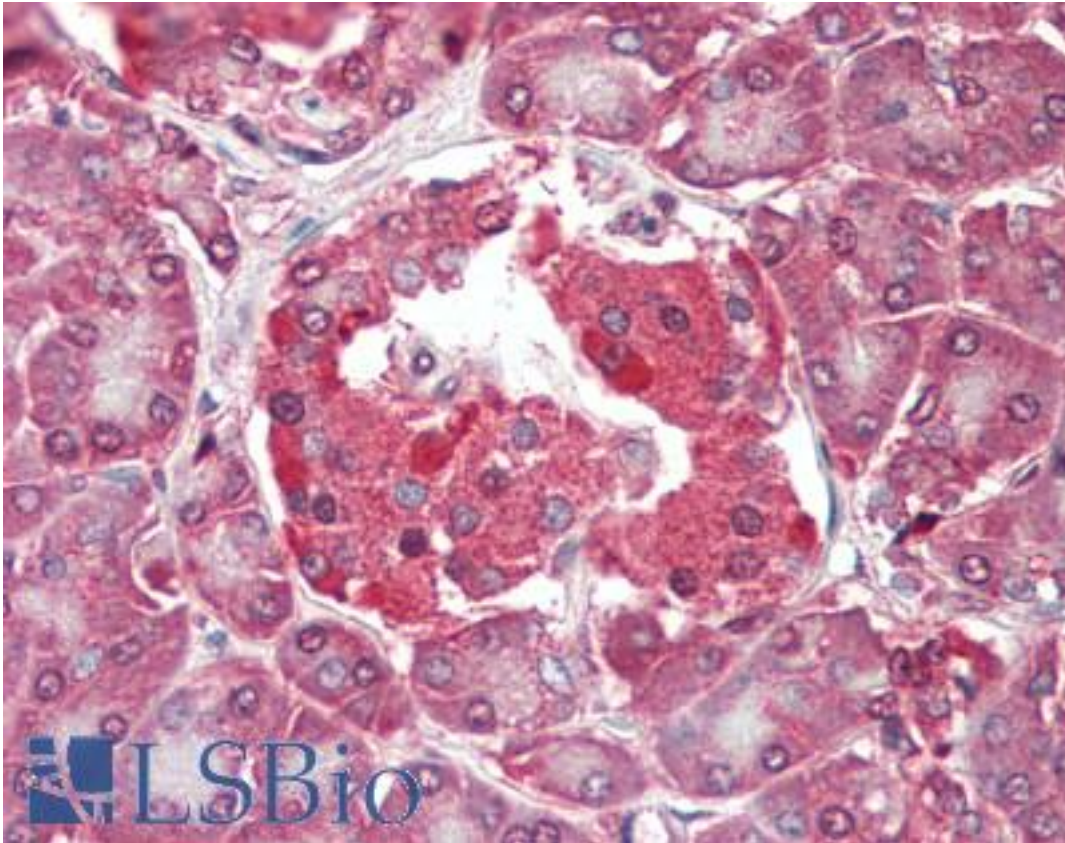
Anti-RASD2 antibody IHC of human prostate. Immunohistochemistry of formalin-fixed, paraffin-embedded tissue after heat-induced antigen retrieval. Antibody LS-B3212 concentration 5 ug/ml.

Immunohistochemistry Image:



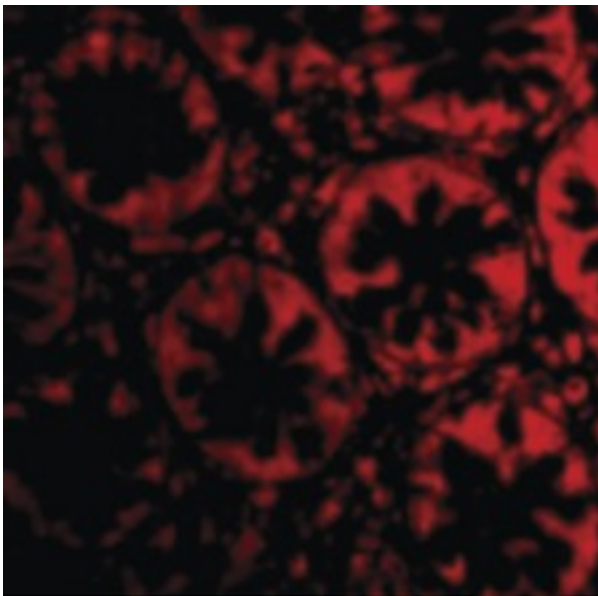
Anti-RASD2 antibody IHC of human kidney. Immunohistochemistry of formalin-fixed, paraffin-embedded tissue after heat-induced antigen retrieval. Antibody LS-B3212 concentration 5 ug/ml.

Immunohistochemistry Image:



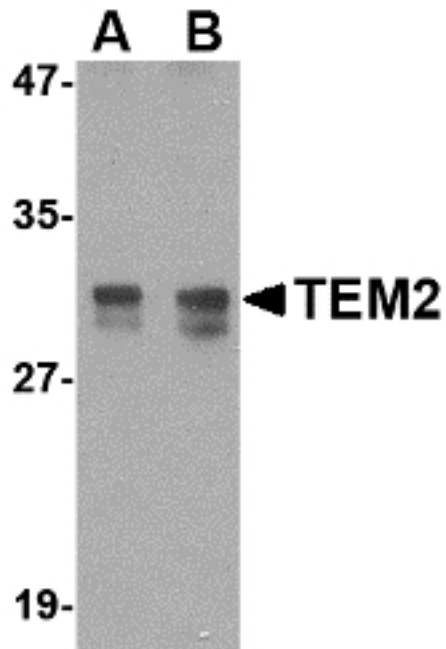
Anti-RASD2 antibody IHC of human pancreas. Immunohistochemistry of formalin-fixed, paraffin-embedded tissue after heat-induced antigen retrieval. Antibody LS-B3212 concentration 5 ug/ml.

Immunofluorescence Image:



Immunofluorescence of TEM2 in Human Colon cells with TEM2 antibody at 20 ug/ml.

Western Blot Image:



Western blot of TEM2 in rat colon tissue lysate with TEM2 antibody at (A) 1 and (B) 2 ug/ml.
Below: Immunohistochemistry of TEM2 in human colon tissue with TEM2 antibody at 2.5 ug/ml.

Requested From:

Japan

Laboratory Reagent For In Vitro Research Use Only

Not for resale without prior written consent from LifeSpan BioSciences, Inc.

Created on 9/23/2014

© 2014 LifeSpan BioSciences