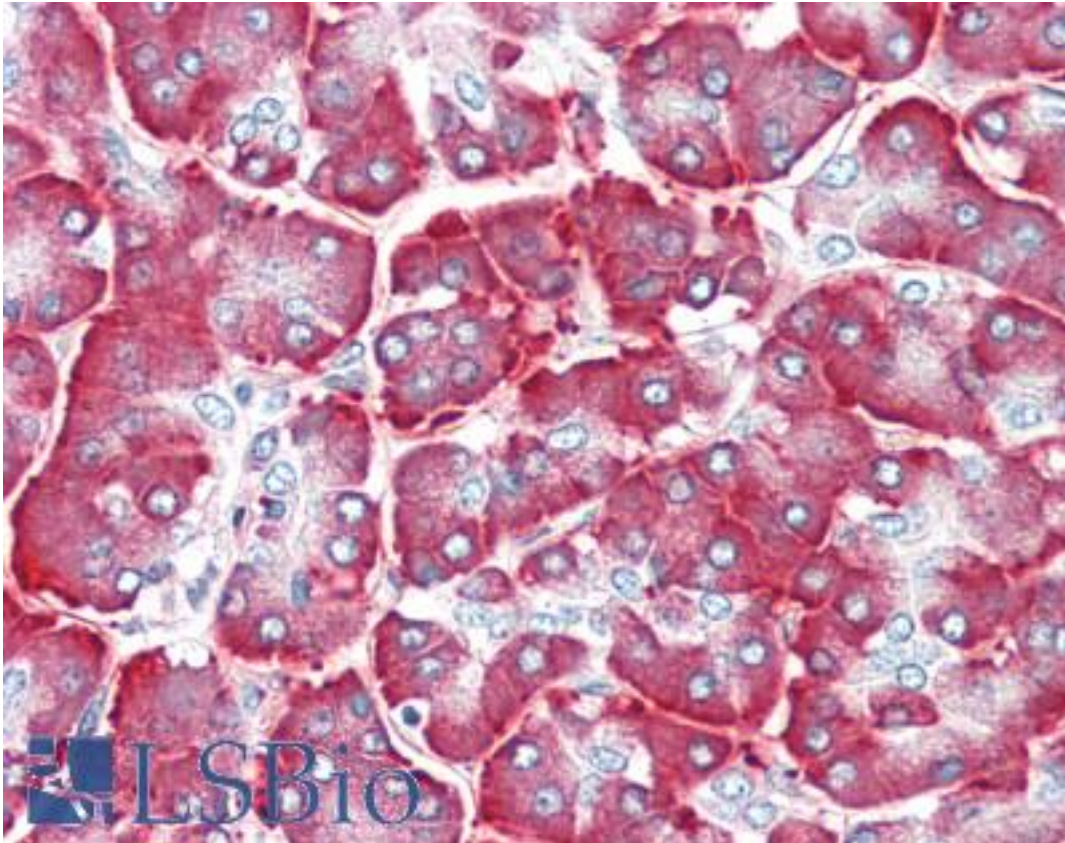


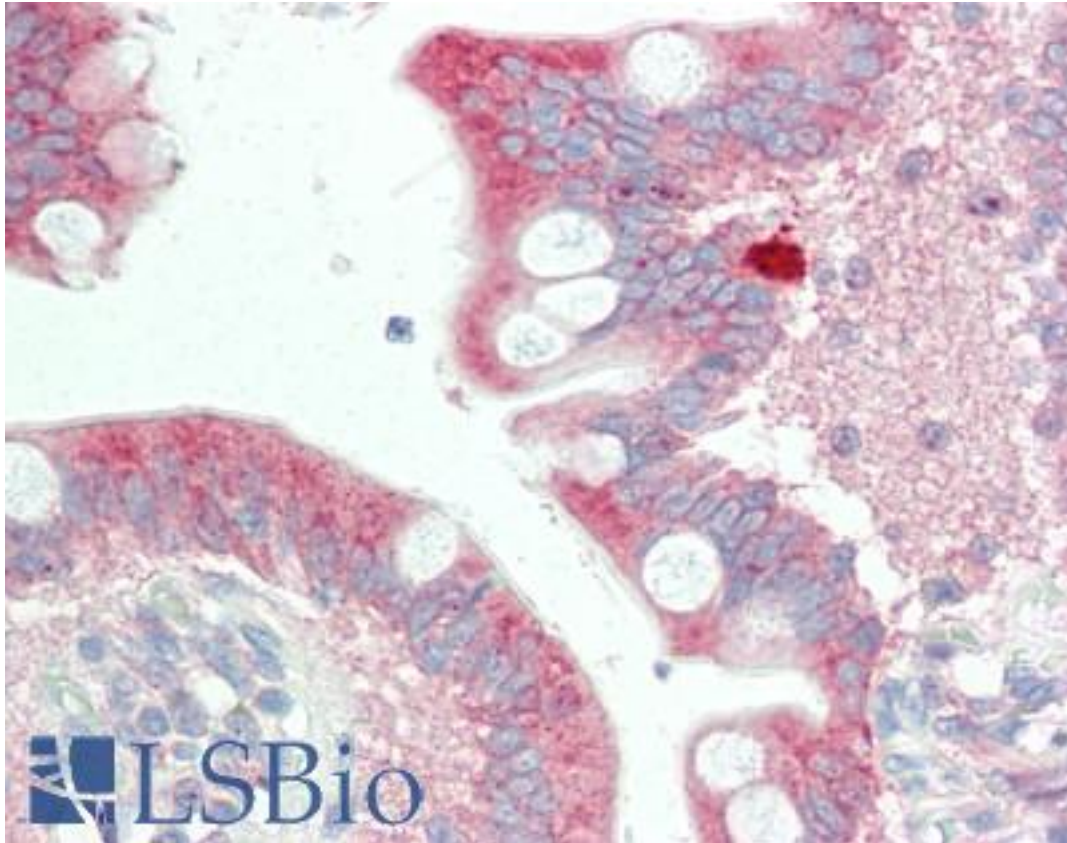
STIM2 Rabbit anti-Human Polyclonal (Internal) Antibody - LS-B3210 - LSBio	
CatalogID:	LS-B3210
Validation:	This antibody replaces catalog number LS-C34694. It has been validated for use in the following assays: IHC-P.
Target:	stromal interaction molecule 2 (STIM2)
Synonyms:	STIM2 Antibody, KIAA1482 Antibody, Stromal interaction molecule 2 Antibody
Host	STIM2 antibody was produced in Rabbit
Clonality:	Polyclonal
Isotype:	IgG
Immunogen Species:	STIM2 antibody was raised against Human
Antigen Type:	Synthetic peptide
Immunogen:	STIM2 antibody was raised against synthetic peptide from human STIM2.
Specificity:	a 17 amino acid peptide from near the center of human STIM2
Epitope:	Internal
Reactivity:	Human, Mouse, Rat
Purification:	Immunoaffinity purified
Presentation:	PBS, 0.02% sodium azide.
Recommended Storage:	Short term 4°C, long term aliquot and store at -20°C, avoid freeze thaw cycles. Store undiluted.
Usage Summary:	Immunohistochemistry: LS-B3210 was validated for use in immunohistochemistry on a panel of 21 formalin-fixed, paraffin-embedded (FFPE) human tissues after heat induced antigen retrieval in pH 6.0 citrate buffer. After incubation with the primary antibody, slides were incubated with biotinylated secondary antibody, followed by alkaline phosphatase-streptavidin and chromogen. The stained slides were evaluated by a pathologist to confirm staining specificity. The optimal working concentration for LS-B3210 was determined to be 5 ug/ml.
Uses:	IHC - Paraffin (5 µg/ml), Western blot (1 µg/ml), ELISA (Optimal dilution to be determined by the researcher)
Size:	50 µg
Concentration:	1 mg/ml

Immunohistochemistry Image:



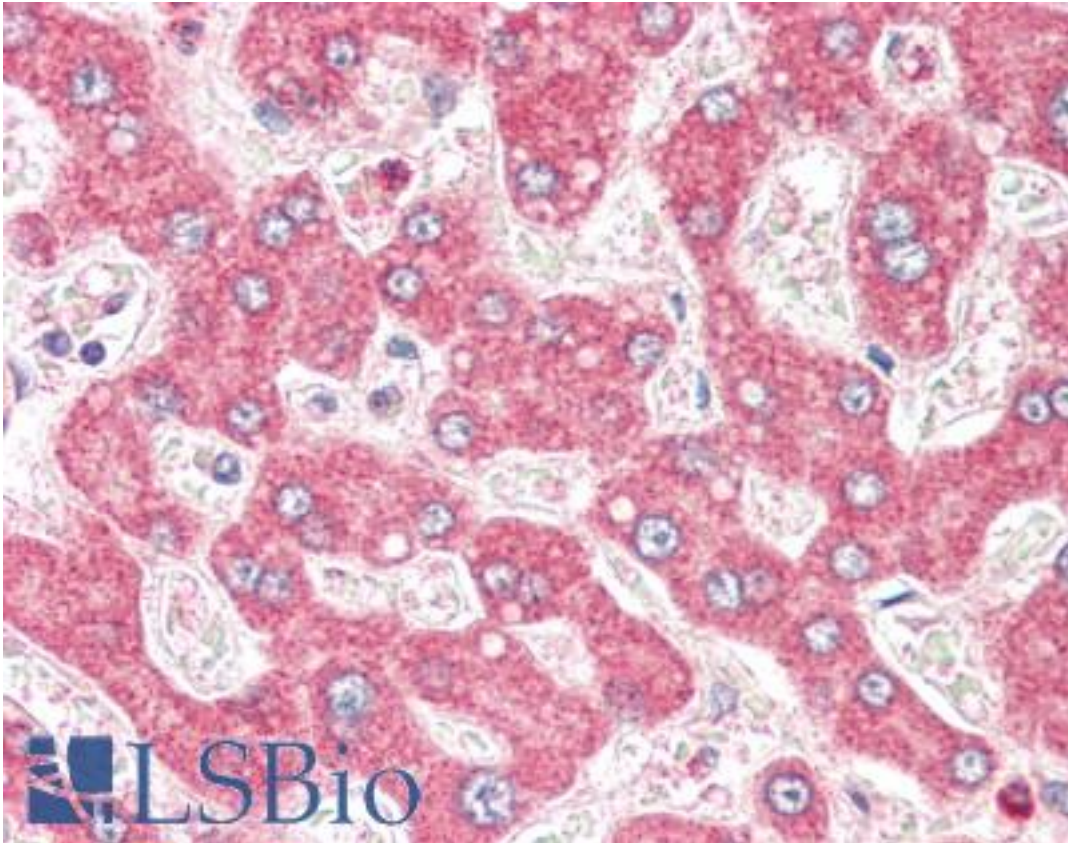
Anti-STIM2 antibody IHC of human pancreas. Immunohistochemistry of formalin-fixed, paraffin-embedded tissue after heat-induced antigen retrieval. Antibody LS-B3210 concentration 5 ug/ml.

Immunohistochemistry Image:



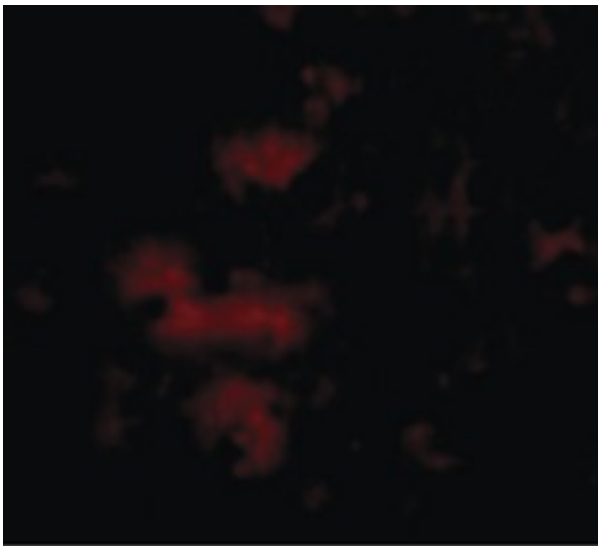
Anti-STIM2 antibody IHC of human small intestine. Immunohistochemistry of formalin-fixed, paraffin-embedded tissue after heat-induced antigen retrieval. Antibody LS-B3210 concentration 5 ug/ml.

Immunohistochemistry Image:



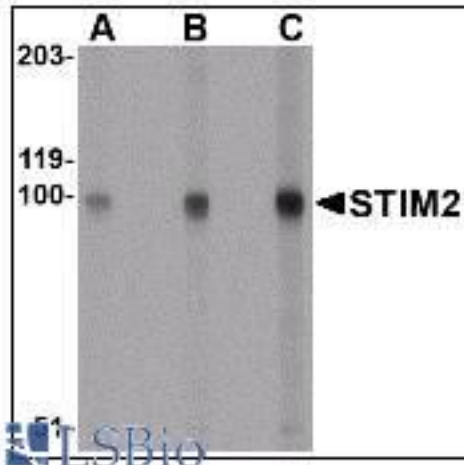
Anti-STIM2 antibody IHC of human liver. Immunohistochemistry of formalin-fixed, paraffin-embedded tissue after heat-induced antigen retrieval. Antibody LS-B3210 concentration 5 ug/ml.

Immunofluorescence Image:



Immunofluorescence of STIM2 in Human Spleen cells with STIM2 antibody at 20 ug/ml.

Western Blot Image:



Western blot of STIM2 in A-20 cell lysate with LS-B3210 at (A) 0.5, (B) 1 and (C) 2 ug/ml.

Requested From:

Japan

Laboratory Reagent For In Vitro Research Use Only

Not for resale without prior written consent from LifeSpan BioSciences, Inc.

Created on 9/23/2014

© 2014 LifeSpan BioSciences