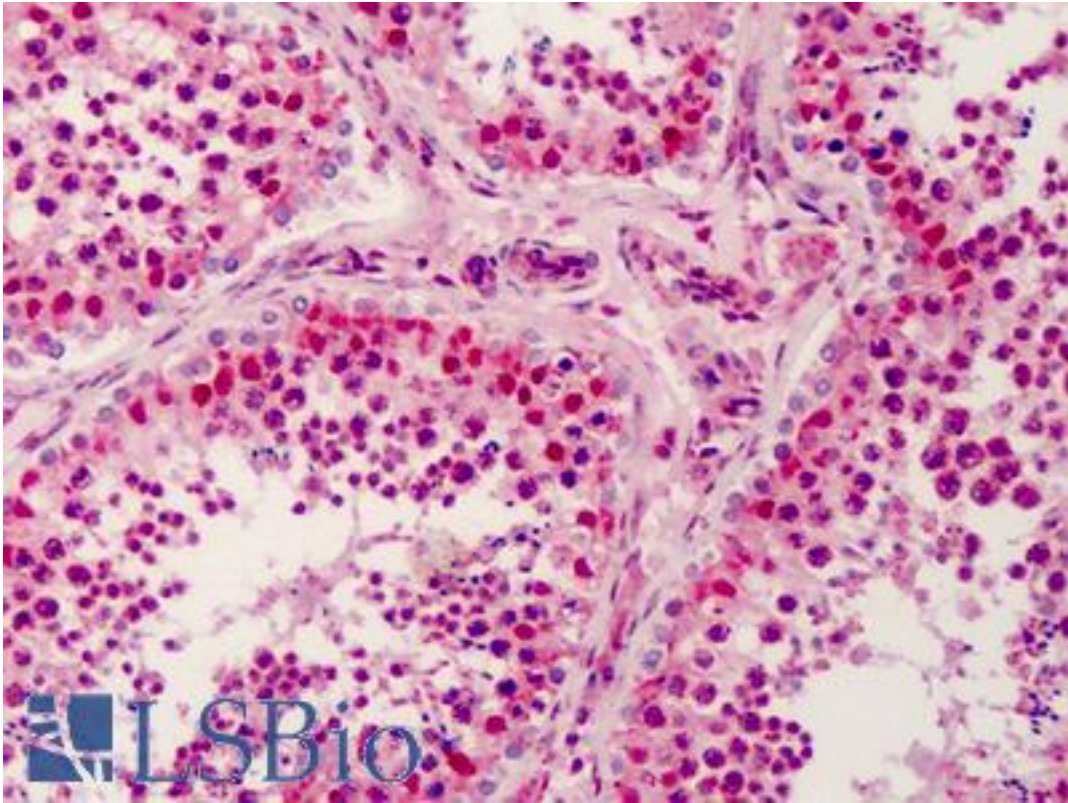


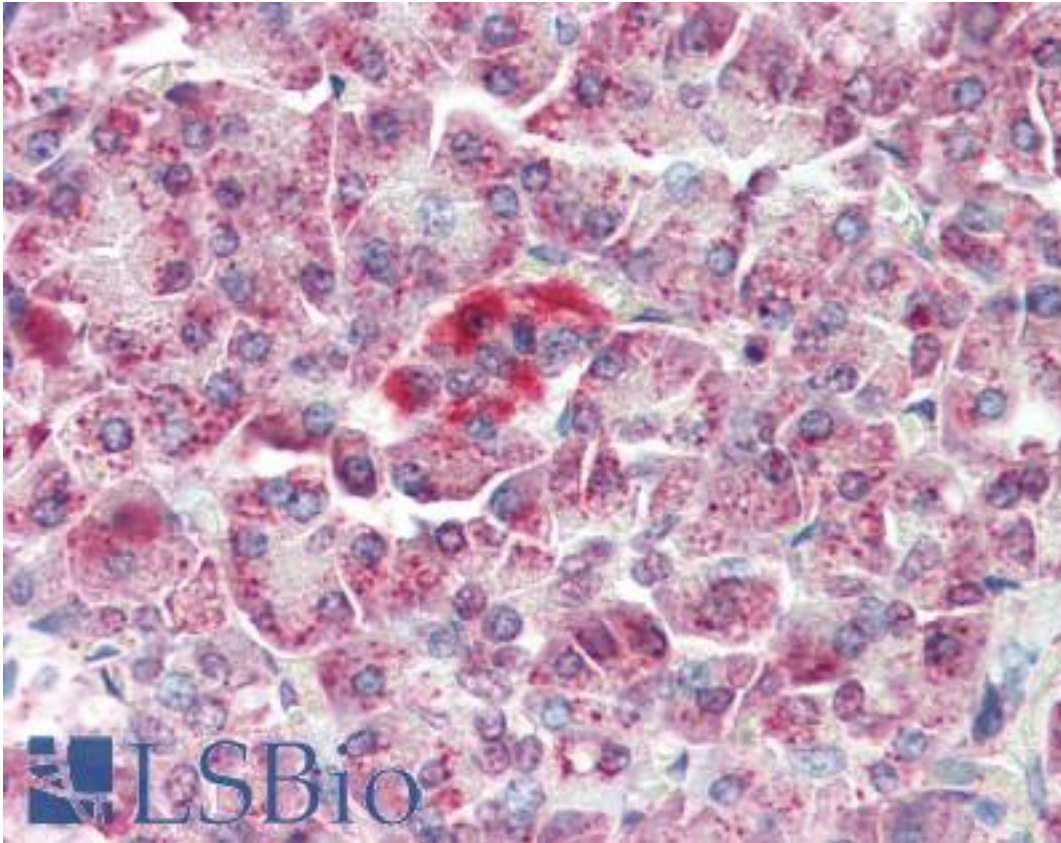
MAP3K5 / ASK1 Rabbit anti-Human Polyclonal (N-Terminus) Antibody - LS-B3206 - LSBio	
CatalogID:	LS-B3206
Validation:	This antibody replaces catalog number LS-C19564. It has been validated for use in the following assays: IHC-P.
Target:	mitogen-activated protein kinase kinase kinase 5 (MAP3K5)
Synonyms:	MAP3K5 Antibody, ASK-1 Antibody, ASK1 Antibody, MEKK5 Antibody, MEK kinase 5 Antibody, MEKK 5 Antibody, MAPK/ERK kinase kinase 5 Antibody, MAPKKK5 Antibody, MAP/ERK kinase kinase 5 Antibody
Family / Subfamily:	Protein Kinase / MAP3K
Host	MAP3K5 antibody was produced in Rabbit
Clonality:	Polyclonal
Immunogen Species:	MAP3K5 / ASK1 antibody was raised against Human
Antigen Type:	Synthetic peptide
Immunogen:	MAP3K5 / ASK1 antibody was raised against synthetic peptide from human MAP3K5 / ASK1.
Specificity:	16 amino acid peptide from near the amino terminus of human ASK1
Epitope:	N-Terminus
Reactivity:	Human, Mouse
Purification:	Immunoaffinity purified
Presentation:	PBS, 0.02% sodium azide.
Recommended Storage:	Short term 4°C, long term aliquot and store at -20°C, avoid freeze thaw cycles. Store undiluted.
Usage Summary:	Immunohistochemistry: LS-B3206 was validated for use in immunohistochemistry on a panel of 21 formalin-fixed, paraffin-embedded (FFPE) human tissues after heat induced antigen retrieval in pH 6.0 citrate buffer. After incubation with the primary antibody, slides were incubated with biotinylated secondary antibody, followed by alkaline phosphatase-streptavidin and chromogen. The stained slides were evaluated by a pathologist to confirm staining specificity. The optimal working concentration for LS-B3206 was determined to be 5 ug/ml.
Uses:	IHC - Paraffin (5 µg/ml), Western blot (1 - 2 µg/ml), ELISA (Optimal dilution to be determined by the researcher)
Size:	50 µg
Concentration:	1 mg/ml

Immunohistochemistry Image:



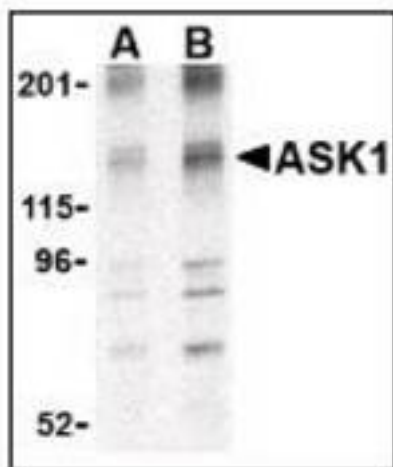
Anti-MAP3K5 / ASK1 antibody IHC of human testis. Immunohistochemistry of formalin-fixed, paraffin-embedded tissue after heat-induced antigen retrieval. Antibody LS-B3206 concentration 5 ug/ml.

Immunohistochemistry Image:



Anti-MAP3K5 / ASK1 antibody IHC of human pancreas. Immunohistochemistry of formalin-fixed, paraffin-embedded tissue after heat-induced antigen retrieval. Antibody LS-B3206 concentration 5 ug/ml.

Western Blot Image:



Western blot of ASK1 in 3T3 cell lysate with LS-B3206 at (A) 1 and (B) 2 ug/ml.

Requested From:

Japan

Laboratory Reagent For In Vitro Research Use Only

Not for resale without prior written consent from LifeSpan BioSciences, Inc.

Created on 9/23/2014

© 2014 LifeSpan BioSciences