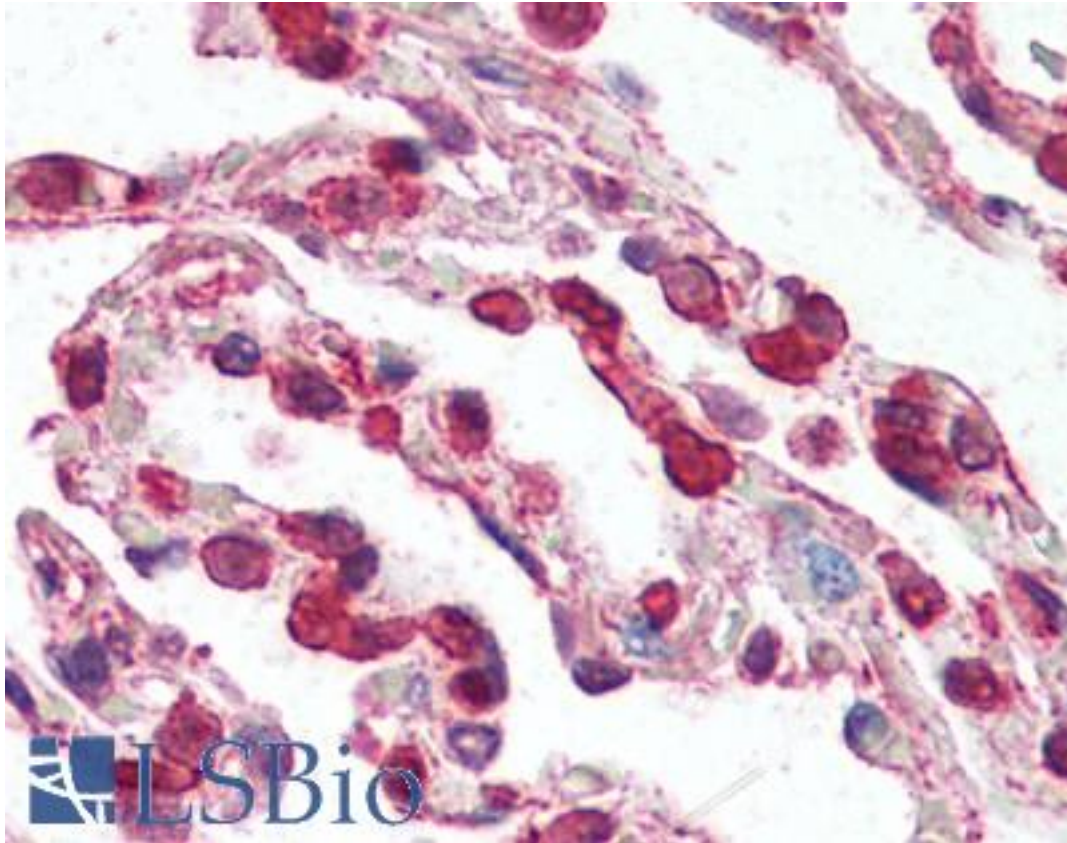


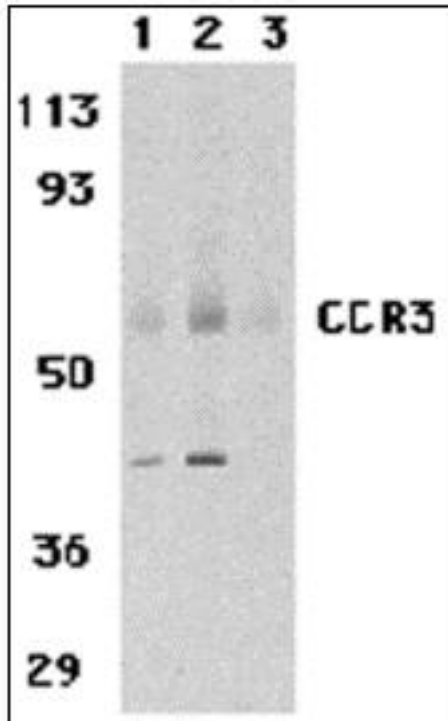
CCR3 Rabbit anti-Human Polyclonal (N-Terminus) Antibody - LS-B3185 - LSBio	
CatalogID:	LS-B3185
Validation:	This antibody replaces catalog number LS-C19440. It has been validated for use in the following assays: IHC-P.
Target:	chemokine (C-C motif) receptor 3 (CCR3)
Synonyms:	CCR3 Antibody, C-C chemokine receptor type 3 Antibody, B-chemokine receptor Antibody, CD193 Antibody, CD193 antigen Antibody, Chemokine c-c motif receptor 3 Antibody, C-C chemokine receptor 3 Antibody, CKR3 Antibody, CC-CKR-3 Antibody, CCR-3 Antibody, CMKBR3 Antibody, Eosinophil eotaxin receptor Antibody, Eotaxin receptor Antibody, C-C CKR-3 Antibody, CC chemokine receptor 3 Antibody
Family / Subfamily:	GPCR / Chemokine
Host	CCR3 antibody was produced in Rabbit
Clonality:	Polyclonal
Immunogen Species:	CCR3 antibody was raised against Human
Antigen Type:	Synthetic peptide
Immunogen:	CCR3 antibody was raised against synthetic peptide from human CCR3.
Specificity:	14 amino acid peptide from near the amino terminus of human CCR3
Epitope:	N-Terminus
Reactivity:	Human, Mouse, Rat
Purification:	Immunoaffinity purified
Presentation:	PBS, 0.02% sodium azide.
Recommended Storage:	Short term 4°C, long term aliquot and store at -20°C, avoid freeze thaw cycles. Store undiluted.
Usage Summary:	Immunohistochemistry: LS-B3185 was validated for use in immunohistochemistry on a panel of 21 formalin-fixed, paraffin-embedded (FFPE) human tissues after heat induced antigen retrieval in pH 6.0 citrate buffer. After incubation with the primary antibody, slides were incubated with biotinylated secondary antibody, followed by alkaline phosphatase-streptavidin and chromogen. The stained slides were evaluated by a pathologist to confirm staining specificity. The optimal working concentration for LS-B3185 was determined to be 2.5 ug/ml.
Uses:	IHC - Paraffin (2.5 µg/ml), Western blot, ELISA (Optimal dilution to be determined by the researcher)
Size:	50 µg

Immunohistochemistry Image:



Anti-CCR3 antibody IHC of human lung. Immunohistochemistry of formalin-fixed, paraffin-embedded tissue after heat-induced antigen retrieval. Antibody LS-B3185 concentration 5 ug/ml.

Western Blot Image:



Western blot of CCR3 in human spleen tissue lysates with CCR3 antibody at 1 (lane 1) and 2 ug/ml (lane 2), and 2 ug/ml in the presence of blocking peptide (lane 3).

Requested From:

Japan

Laboratory Reagent For In Vitro Research Use Only

Not for resale without prior written consent from LifeSpan BioSciences, Inc.

Created on 9/23/2014

© 2014 LifeSpan BioSciences