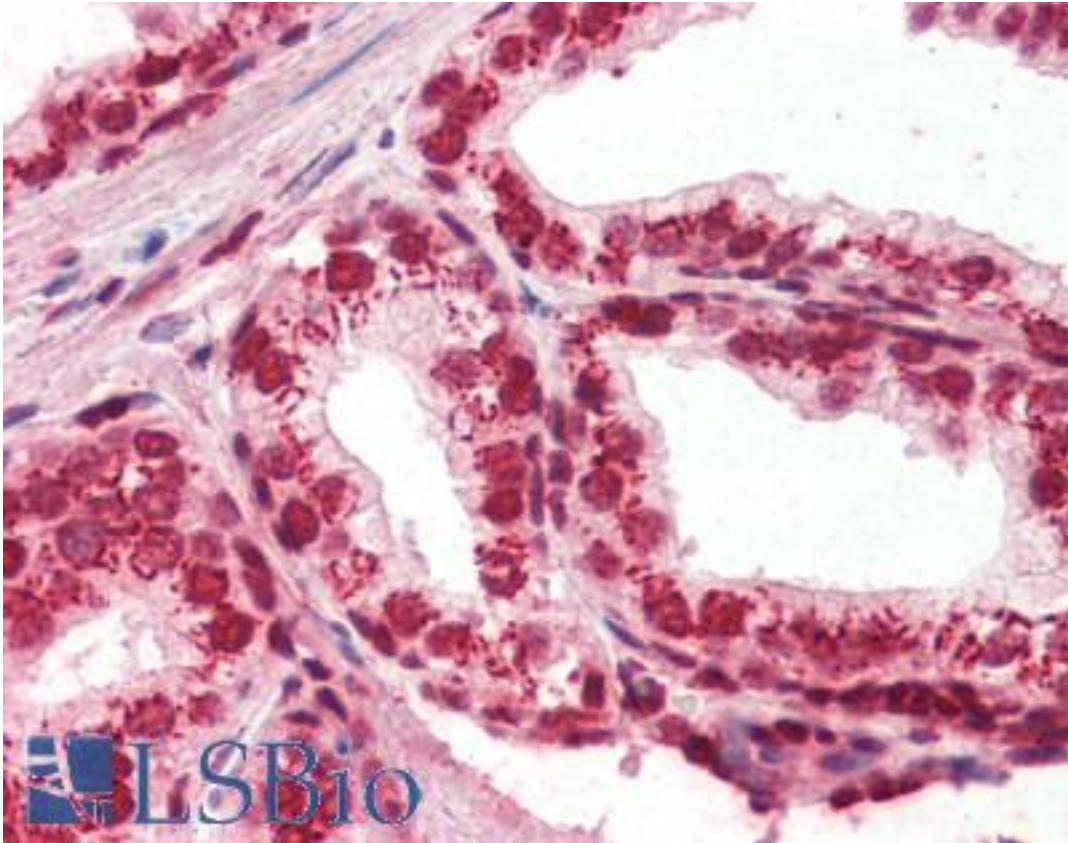


APEX1 / APE1 Rabbit anti-Human Polyclonal Antibody - LS-B3179 - LSBio

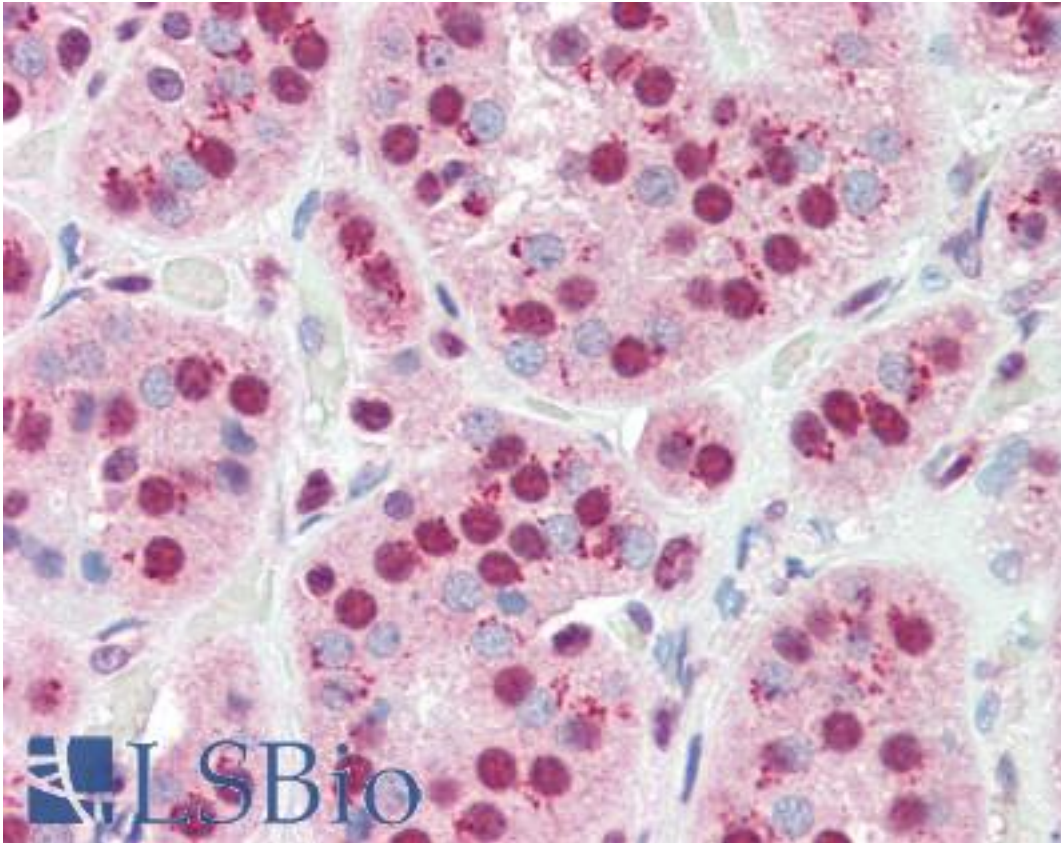
CatalogID:	LS-B3179
Validation:	This antibody replaces catalog number LS-C11929. It has been validated for use in the following assays: IHC-P.
Target:	APEX nuclease (multifunctional DNA repair enzyme) 1 (APEX1)
Synonyms:	APEX1 Antibody, AP endonuclease class I Antibody, AP lyase Antibody, APE Antibody, APE-1 Antibody, APEN Antibody, APE1 Antibody, APEX nuclease Antibody, Redox factor-1 Antibody, AP endonuclease 1 Antibody, APEX Antibody, APX Antibody, Protein REF-1 Antibody, REF-1 Antibody, REF1 Antibody
Host	APEX1 antibody was produced in Rabbit
Clonality:	Polyclonal
Isotype:	IgG
Immunogen Species:	APEX1 / APE1 antibody was raised against Human
Antigen Type:	Fusion protein
Immunogen:	APEX1 / APE1 antibody was raised against affinity purified human Apurinic/Apyrimidinic Endonuclease (APE/ref-1) fusion protein.
Specificity:	Specific to the human APE/ref-1 protein. Competitively inhibited from recognizing the APE/ref-1 antigen in tissues using APE/ref-1 protein. Inhibits repair activity of ape protein.
Reactivity:	Human
Purification:	Immunoaffinity purified
Presentation:	PBS, pH 7.2, 0.05% sodium azide before the addition of glycerol to 40%.
Recommended Storage:	Long term: -20°C; Short term: +4°C. Avoid repeat freeze-thaw cycles.
Usage Summary:	Immunohistochemistry: LS-B3179 was validated for use in immunohistochemistry on a panel of 21 formalin-fixed, paraffin-embedded (FFPE) human tissues after heat induced antigen retrieval in pH 6.0 citrate buffer. After incubation with the primary antibody, slides were incubated with biotinylated secondary antibody, followed by alkaline phosphatase-streptavidin and chromogen. The stained slides were evaluated by a pathologist to confirm staining specificity. The optimal working concentration for LS-B3179 was determined to be 1:250. Western Blot: 1:500 (ECL). Detects a single band at 37kD. Diluted antibody can be reused 1-3 times in Western Blot analysis. Apoptosis: Can be used following the apoptosis (TUNEL) procedure using the Boehringer-Mannheim TUNEL assay kit. Antibody staining should be performed AFTER the TUNEL assay. Positive control: HeLa whole cell extract.
Uses:	IHC - Paraffin (1:250), IHC - Frozen, Western blot (1:500) (Optimal dilution to be determined by the researcher)
Size:	50 µl

Immunohistochemistry Image:



Anti-APEX1 / APE1 antibody IHC of human prostate. Immunohistochemistry of formalin-fixed, paraffin-embedded tissue after heat-induced antigen retrieval. Antibody LS-B3179 dilution 1:250.

Immunohistochemistry Image:



Anti-APEX1 / APE1 antibody IHC of human adrenal. Immunohistochemistry of formalin-fixed, paraffin-embedded tissue after heat-induced antigen retrieval. Antibody LS-B3179 dilution 1:250.

Requested From:

Japan

Laboratory Reagent For In Vitro Research Use Only

Not for resale without prior written consent from LifeSpan BioSciences, Inc.

Created on 9/23/2014

© 2014 LifeSpan BioSciences