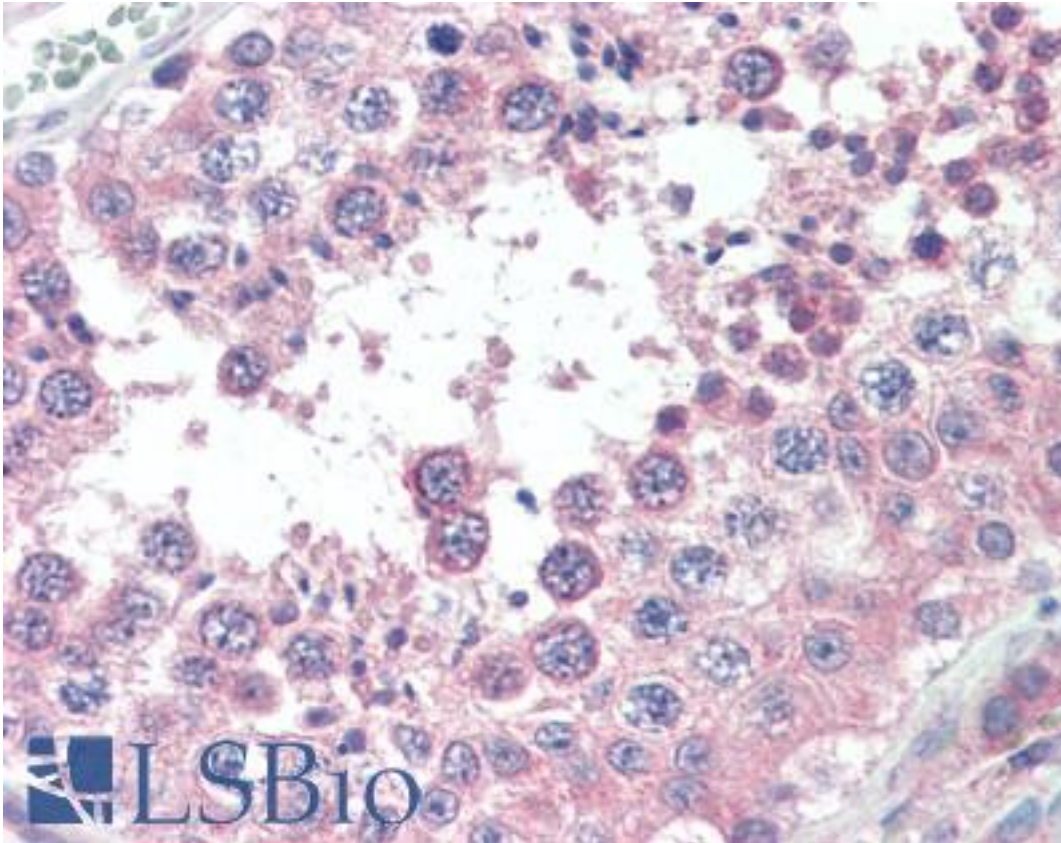


SLC3A2 / CD98 Mouse anti-Human Monoclonal (44D7) Antibody - LS-B3177 - LSBio

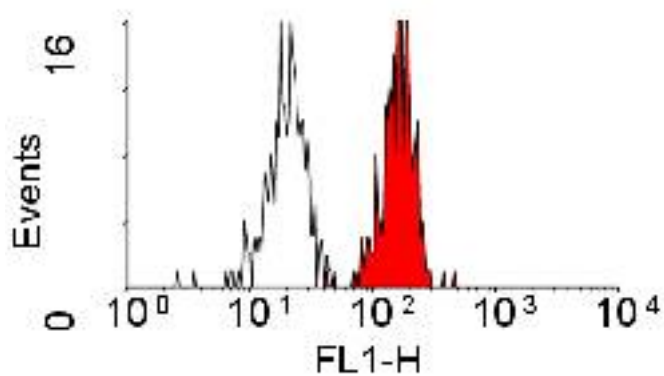
CatalogID:	LS-B3177
Validation:	This antibody replaces catalog number LS-C43284. It has been validated for use in the following assays: IHC-P.
Target:	solute carrier family 3 (amino acid transporter heavy chain), member 2 (SLC3A2)
Synonyms:	SLC3A2 Antibody, 4F2 heavy chain antigen Antibody, 4f2 antigen Antibody, 4T2HC Antibody, 4F2 Antibody, 4f2 heavy chain Antibody, 4F2HC Antibody, CD98 Antibody, NACAE Antibody, Monoclonal antibody 44D7 Antibody, CD98 antigen Antibody, CD98 heavy chain Antibody, CD98HC Antibody, MDU1 Antibody
Family / Subfamily:	Transporter / rBAT transport accessory protein
Host	SLC3A2 antibody was produced in Mouse
Clonality:	Monoclonal
Isotype:	IgG1
Clone Name:	44D7
Immunogen Species:	SLC3A2 / CD98 antibody was raised against Human
Antigen Type:	Cells
Immunogen:	SLC3A2 / CD98 antibody was raised against hOON pre-B leukaemia cell line.
Specificity:	Reacts with the heavy chain of the CD98 molecule. The same epitope as recognized by clone 4F2. This antibody binds to all cell lines in culture and to activated T-cells.
Reactivity:	Human
Purification:	Protein G purified
Presentation:	PBS, 0.09% sodium azide
Recommended Storage:	Long term: -20°C; Short term: +4°C. Avoid repeat freeze-thaw cycles.
Usage Summary:	Immunohistochemistry: LS-B3177 was validated for use in immunohistochemistry on a panel of 21 formalin-fixed, paraffin-embedded (FFPE) human tissues after heat induced antigen retrieval in pH 6.0 citrate buffer. After incubation with the primary antibody, slides were incubated with biotinylated secondary antibody, followed by alkaline phosphatase-streptavidin and chromogen. The stained slides were evaluated by a pathologist to confirm staining specificity. The optimal working concentration for LS-B3177 was determined to be 15 ug/ml. Flow Cytometry: Use 10 ul of the suggested working dilution to label 10 ⁶ cells in 100ul.
Uses:	IHC - Paraffin (15 µg/ml), IHC - Frozen, Immunoprecipitation, Flow Cytometry (1:50 - 1:200) (Optimal dilution to be determined by the researcher)
Size:	50 µg
Concentration:	1 mg/ml

Immunohistochemistry Image:



Anti-SLC3A2 antibody IHC of human, testis. Immunohistochemistry of formalin-fixed, paraffin-embedded tissue after heat-induced antigen retrieval. Antibody LS-B3177 concentration 15 ug/ml.

Flow Cytometry Image:



Staining of human peripheral blood monocytes using using F(ab')₂ rabbit anti mouse IgG: FITC LS-C59206 as a secondary.

Requested From:	Japan
Laboratory Reagent For In Vitro Research Use Only	
Not for resale without prior written consent from LifeSpan BioSciences, Inc.	
Created on 9/23/2014	
© 2014 LifeSpan BioSciences	