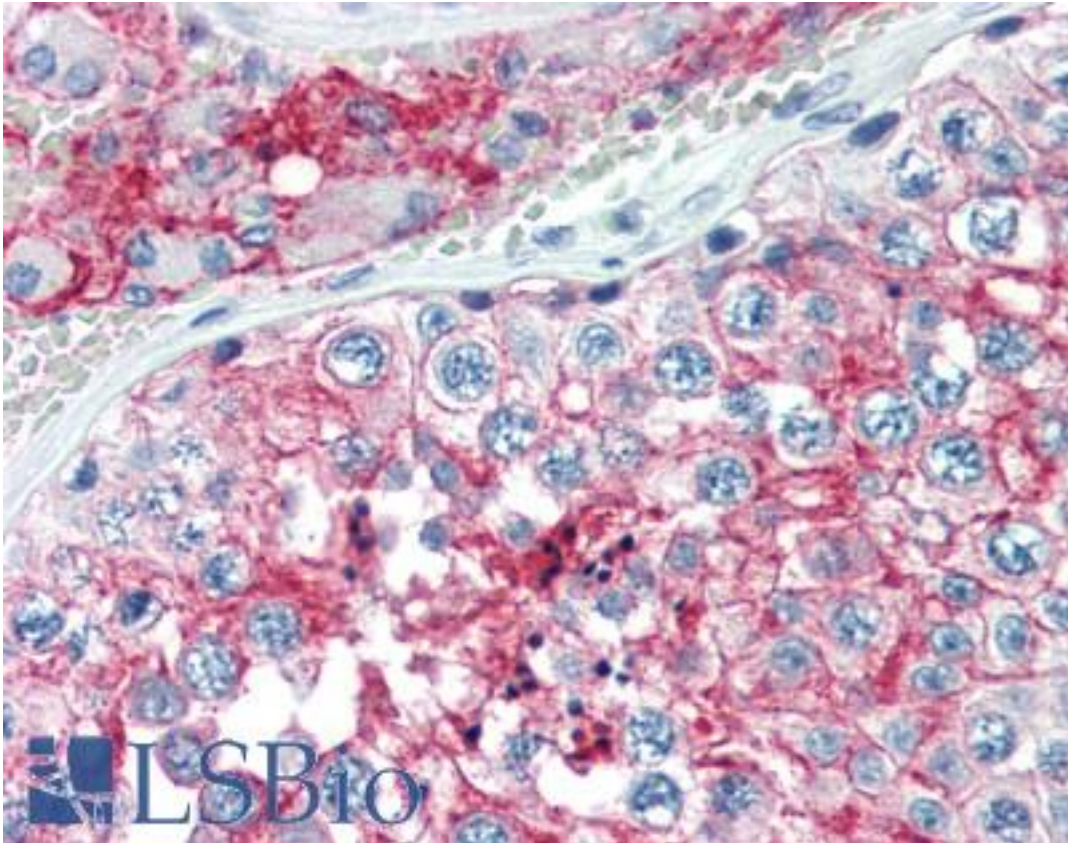


| Basigin / Emmprin / CD147 Mouse anti-Human Monoclonal (Azide-free) (MEM-M6/6) Antibody - LS-B3169 - LSBio | |
|---|--|
| CatalogID: | LS-B3169 |
| Validation: | This antibody replaces catalog number LS-C45728. It has been validated for use in the following assays: IHC-P. |
| Target: | basigin (Ok blood group) (BSG) |
| Synonyms: | BSG Antibody, 5F7 Antibody, Basigin Antibody, Basigin (Ok blood group) Antibody, CD147 antigen Antibody, Collagenase stimulatory factor Antibody, EMMPRIN Antibody, OK Antibody, OK blood group antigen Antibody, TCSF Antibody, CD147 Antibody, M6 Antibody |
| Host | BSG antibody was produced in Mouse |
| Clonality: | Monoclonal |
| Isotype: | IgG1 |
| Clone Name: | MEM-M6/6 |
| Modifications: | Azide-free |
| Immunogen Species: | Basigin / Emmprin / CD147 antibody was raised against Human |
| Antigen Type: | Recombinant protein |
| Immunogen: | Basigin / Emmprin / CD147 antibody was raised against protein A-CR purified soluble recombinant form of CD147, CD147Rg, which consists of the cDNA coding for the hinge region, CH2-and CH3 domain of human IgG1 (CD147Rg is secreted by transfectants as a dimer). |
| Specificity: | Recognizes Ig domain D2 (membrane proximal) of CD147 (Neurothelin), a 50-60 kD type I transmembrane glycoprotein primarily expressed on all leukocytes, red blood cells, platelets and endothelial cells; it is not expressed by resting lymphocytes. |
| Reactivity: | Human |
| Purification: | Protein A purified |
| Presentation: | Azide free PBS, preserved by filter sterilization, approx., pH 7.4. |
| Recommended Storage: | Short term 4°C, long term aliquot and store at -20°C, avoid freeze thaw cycles. |
| Usage Summary: | <p>Immunohistochemistry: LS-B3169 was validated for use in immunohistochemistry on a panel of 21 formalin-fixed, paraffin-embedded (FFPE) human tissues after heat induced antigen retrieval in pH 6.0 citrate buffer. After incubation with the primary antibody, slides were incubated with biotinylated secondary antibody, followed by alkaline phosphatase-streptavidin and chromogen. The stained slides were evaluated by a pathologist to confirm staining specificity. The optimal working concentration for LS-B3169 was determined to be 10 ug/ml. Western Blot Positive control: 293 human fibroblastoid cell line Sample preparation: Resuspend approx. 50x10⁶. cells in 1 ml cold Lysis buffer (1% laurylmaltoside in 20 mM Tris/Cl, 100 mM NaCl pH 8.2, 50 mM NaF including Protease inhibitor Cocktail). Incubate 60 min on ice. Centrifuge to remove cell debris. Mix lysate with non-reducing SDS-PAGE sample buffer. Tested in IHC-P using formalin-fixed paraffin-embedded human tissues and HIER antigen retrieval with sodium citrate at pH 6.0. Application note: Non-reducing conditions. Functional Application The antibody MEM-M6/6 (high-affinity mAb of unique epitope specificity) inhibits anti-CD3-induced T cell activation.</p> |

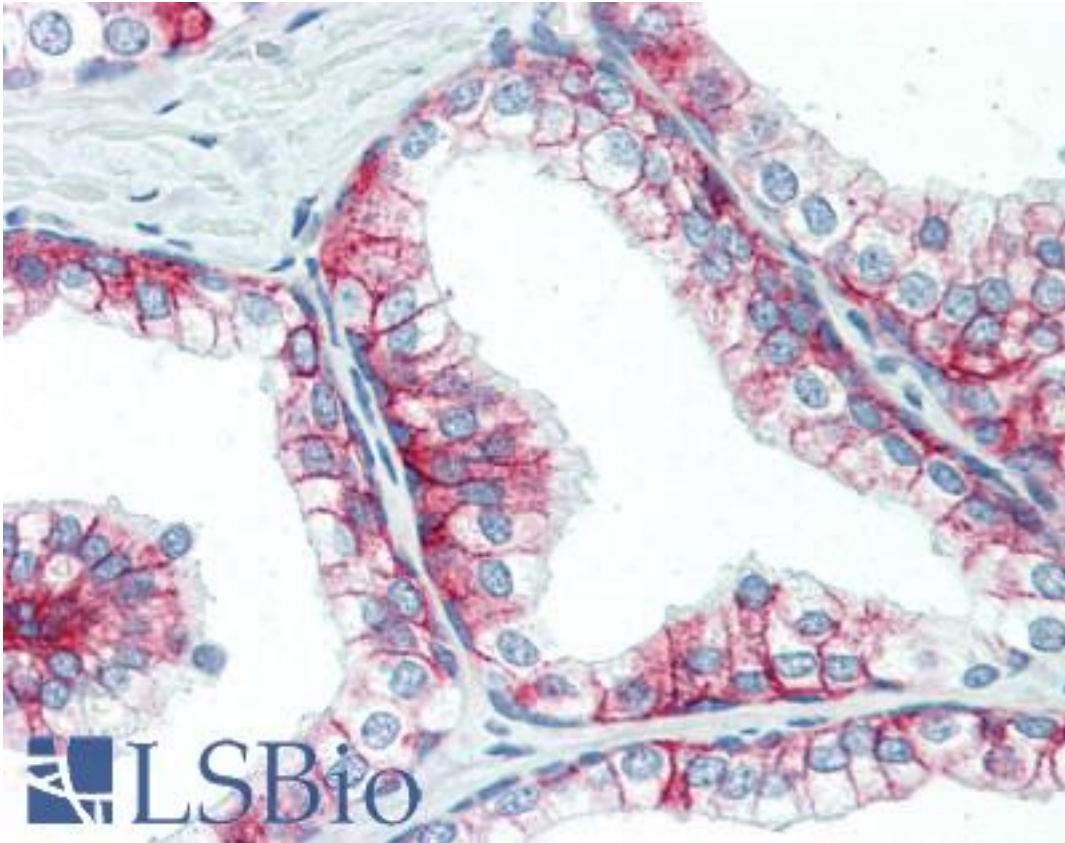
| | |
|--------------|---|
| Uses: | IHC - Paraffin (10 µg/ml), Western blot, Flow Cytometry, Functional Assay (Optimal dilution to be determined by the researcher) |
| Size: | 50 µg |

Immunohistochemistry Image:



Anti-CD147 antibody IHC staining of human testis. Immunohistochemistry of formalin-fixed, paraffin-embedded tissue after heat-induced antigen retrieval. Antibody LS-B3169 concentration 10 ug/ml.

Immunohistochemistry Image:



Anti-CD147 antibody IHC staining of human prostate. Immunohistochemistry of formalin-fixed, paraffin-embedded tissue after heat-induced antigen retrieval. Antibody LS-B3169 concentration 10 ug/ml.

Requested From:

Japan

Laboratory Reagent For In Vitro Research Use Only

Not for resale without prior written consent from LifeSpan BioSciences, Inc.

Created on 9/23/2014

© 2014 LifeSpan BioSciences