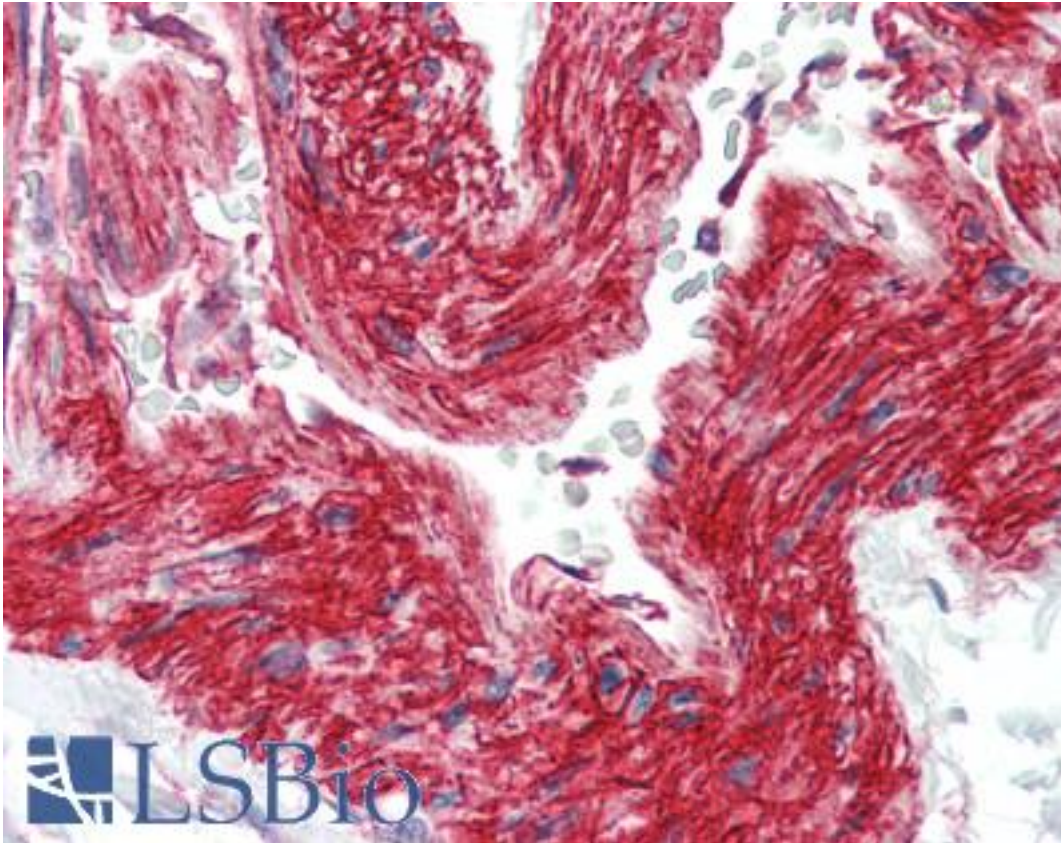


ITGB1 / Integrin Beta 1 / CD29 Mouse anti-Human Monoclonal Antibody - LS-B3164 - LSBio	
CatalogID:	LS-B3164
Validation:	This antibody replaces catalog number LS-C36936. It has been validated for use in the following assays: IHC-P.
Target:	integrin, beta 1 (fibronectin receptor, beta polypeptide, antigen CD29 includes MDF2, MSK12) (ITGB1)
Synonyms:	ITGB1 Antibody, CD29 Antibody, CD29 antigen Antibody, Integrin beta-1 Antibody, MDF2 Antibody, MSK12 Antibody, Integrin VLA-4 beta subunit Antibody, VLA-BETA Antibody, VLAB Antibody, Beta 1 integrin Antibody, FNRB Antibody, GPIIA Antibody, Integrin Beta 1 Antibody, VLA-4 subunit beta Antibody
Family / Subfamily:	Integrin / not assigned-Integrin
Host	ITGB1 antibody was produced in Mouse
Clonality:	Monoclonal
Isotype:	IgG1
Immunogen Species:	ITGB1 / Integrin Beta 1 / CD29 antibody was raised against Human
Immunogen:	ITGB1 / Integrin Beta 1 / CD29 antibody was raised against jurkat T-leukemic cell line.
Specificity:	Recognizes human integrin b1 subunit. Recognizes transfectant cells displaying human integrin b1 and purified integrin b1.
Reactivity:	Human
Purification:	Protein A purified
Presentation:	0.02 M PBS, pH 7.6, 0.1% sodium azide.
Recommended Storage:	+4°C or -20°C, Avoid repeated freezing and thawing.
Usage Summary:	Immunohistochemistry: LS-B3164 was validated for use in immunohistochemistry on a panel of 21 formalin-fixed, paraffin-embedded (FFPE) human tissues after heat induced antigen retrieval in pH 6.0 citrate buffer. After incubation with the primary antibody, slides were incubated with biotinylated secondary antibody, followed by alkaline phosphatase-streptavidin and chromogen. The stained slides were evaluated by a pathologist to confirm staining specificity. The optimal working concentration for LS-B3164 was determined to be 10 ug/ml. Function: Stimulates adhesion of cells to extracellular matrix proteins. Does not bind reduced integrin b1 on Western Blot.
Uses:	IHC - Paraffin (10 µg/ml), IHC - Frozen, Western blot, Immunoprecipitation, Flow Cytometry (Optimal dilution to be determined by the researcher)
Size:	50 µg

Immunohistochemistry Image:



Anti-Integrin Beta 1 antibody IHC of human vessel. Immunohistochemistry of formalin-fixed, paraffin-embedded tissue after heat-induced antigen retrieval. Antibody LS-B3164 concentration 10 ug/ml.

Requested From:

Japan

Laboratory Reagent For In Vitro Research Use Only

Not for resale without prior written consent from LifeSpan BioSciences, Inc.

Created on 9/23/2014

© 2014 LifeSpan BioSciences