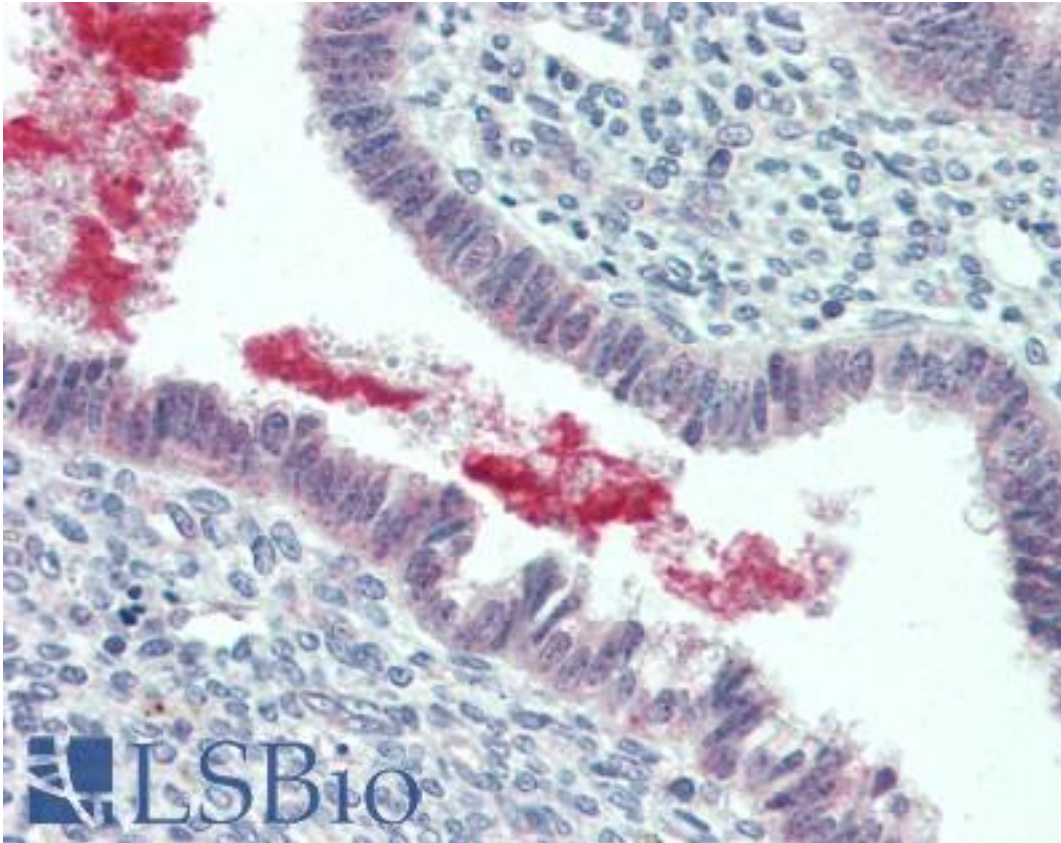


GRN / Progranulin / Granulin Rabbit anti-Human Polyclonal (C-Terminus) Antibody - LS-B3158 - LSBio	
CatalogID:	LS-B3158
Validation:	This antibody replaces catalog number LS-C17498. It has been validated for use in the following assays: IHC-P.
Target:	granulin (GRN)
Synonyms:	GRN Antibody, Acrogranin Antibody, CLN11 Antibody, Epithelin precursor Antibody, GEP Antibody, gp88 Antibody, Granulin Antibody, Granulin-epithelin Antibody, Granulins Antibody, PC cell-derived growth factor Antibody, PCDGF Antibody, PEPI Antibody, PGRN Antibody, Proepithelin Antibody, Progranulin Antibody
Family / Subfamily:	Hormone / not assigned-Hormone
Host	GRN antibody was produced in Rabbit
Clonality:	Polyclonal
Isotype:	IgG
Immunogen Species:	GRN / Progranulin / Granulin antibody was raised against Human
Antigen Type:	Synthetic peptide
Immunogen:	GRN / Progranulin / Granulin antibody was raised against synthetic peptide derived from the C-terminal region of human PCDGF (PC cell-derived growth factor, GP88, acrogranin, granulin precursor, epithelin precursor, or progranulin).
Specificity:	Recognizes human PCDGF protein at ~64-88kD.
Epitope:	C-Terminus
Reactivity:	Human
Purification:	Immunoaffinity purified
Presentation:	PBS, pH 7.4, 0.1% sodium azide.
Recommended Storage:	Long term: -20°C; Short term: +4°C. Avoid repeat freeze-thaw cycles.
Usage Summary:	Immunohistochemistry: LS-B3158 was validated for use in immunohistochemistry on a panel of 21 formalin-fixed, paraffin-embedded (FFPE) human tissues after heat induced antigen retrieval in pH 6.0 citrate buffer. After incubation with the primary antibody, slides were incubated with biotinylated secondary antibody, followed by alkaline phosphatase-streptavidin and chromogen. The stained slides were evaluated by a pathologist to confirm staining specificity. The optimal working concentration for LS-B3158 was determined to be 5 µg/ml. Positive control: Human MDA-MB-231 breast adenocarcinoma, PC-3 prostate adenocarcinoma (bone metastatic site), HeLa cervical carcinoma, and HT1080 fibrosarcoma lysates.
Uses:	IHC - Paraffin (5 µg/ml), Western blot (1 - 3 µg/ml), Immunoprecipitation (Optimal dilution to be determined by the researcher)
Size:	50 µg
Concentration:	0.25 mg/ml

Immunohistochemistry Image:



Anti-GRN / Granulin antibody IHC of human uterus. Immunohistochemistry of formalin-fixed, paraffin-embedded tissue after heat-induced antigen retrieval. Antibody LS-B3158 concentration 5 ug/ml.

Requested From:

Japan

Laboratory Reagent For In Vitro Research Use Only

Not for resale without prior written consent from LifeSpan BioSciences, Inc.

Created on 9/23/2014

© 2014 LifeSpan BioSciences