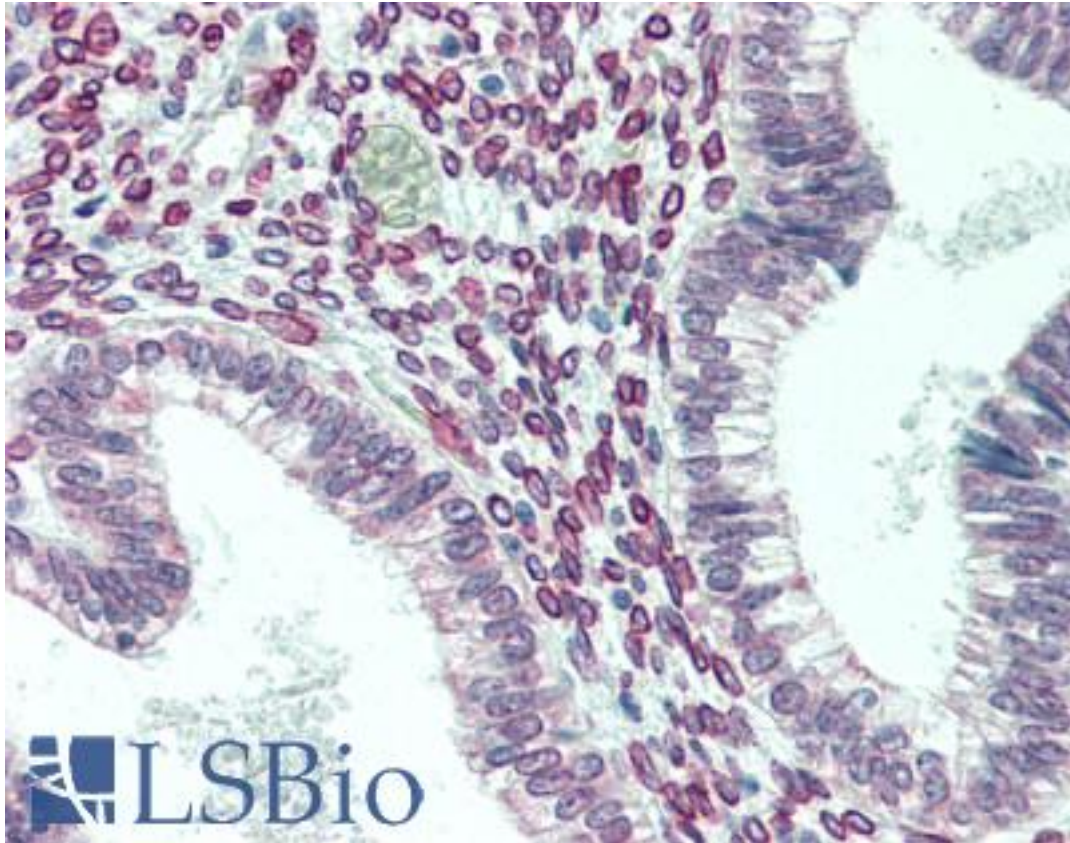


CENPF / CENP-F Mouse anti-Human Monoclonal (aa1759-2093) Antibody - LS-B3157 - LSBio

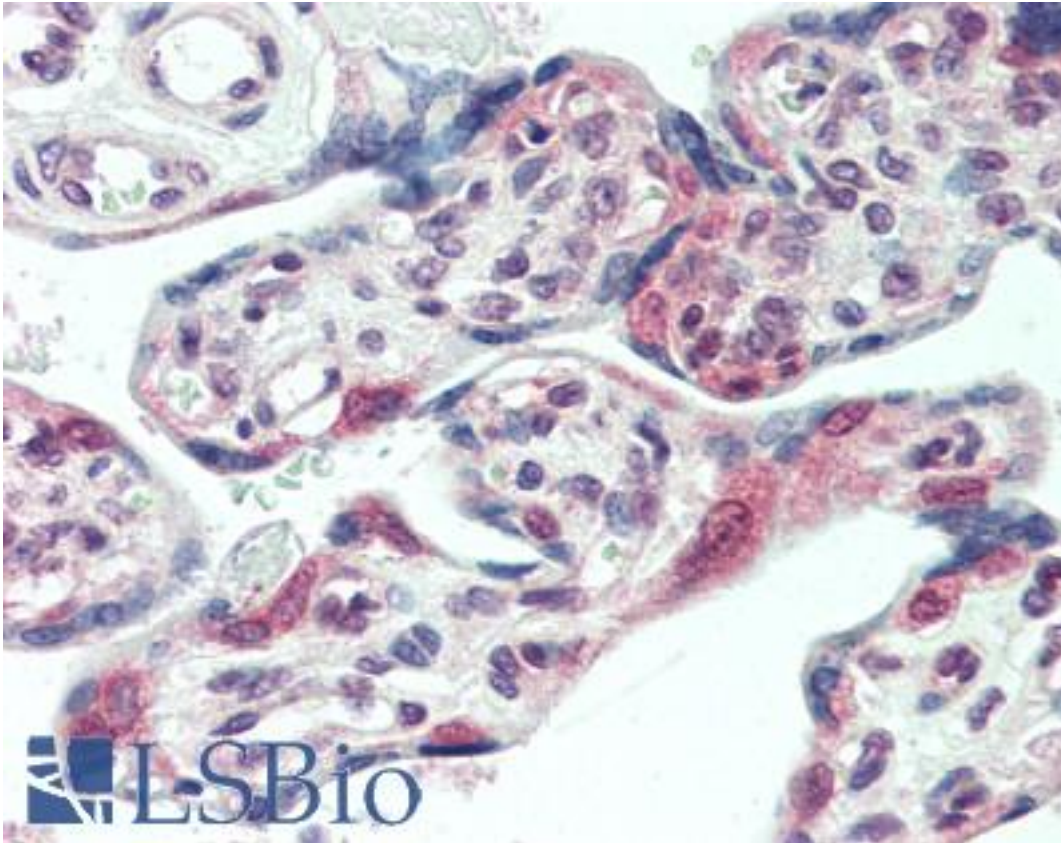
CatalogID:	LS-B3157
Validation:	This antibody replaces catalog number LS-C83430. It has been validated for use in the following assays: IHC-P.
Target:	centromere protein F, 350/400kDa (CENPF)
Synonyms:	CENPF Antibody, AH antigen Antibody, Centromere protein F Antibody, CENF Antibody, CENP-F Antibody, Kinetochore protein CENPF Antibody, Mitosin Antibody, CENP-F kinetochore protein Antibody, Hcp-1 Antibody, PRO1779 Antibody
Host	CENPF antibody was produced in Mouse
Clonality:	Monoclonal
Isotype:	Ig2a,k
Immunogen Species:	CENPF / CENP-F antibody was raised against Human
Antigen Type:	Fusion protein
Immunogen:	CENPF / CENP-F antibody was raised against gST fusion protein expressed in E. coli corresponding to aa 1759-2093 of human mitosin.
Specificity:	Recognizes mitosin, a 350 kD phosphoprotein that is specifically involved in mitotic -phase progression. Mitosin is expressed throughout S, G2, and M phases of the cell cycle, but is absent in G0 and G1. It associates with the mitotic apparatus during M-phase and is redistributed from the nucleus to the centromere, spindle, and midbody during M-phase progression. Its usefulness as a proliferation marker is under active investigation.
Epitope:	aa1759-2093
Reactivity:	Human
Purification:	Protein G purified
Presentation:	PBS, pH 7.4
Recommended Storage:	Store at -70°C, avoid freeze/thaw cycles.
Usage Summary:	Immunohistochemistry: LS-B3157 was validated for use in immunohistochemistry on a panel of 21 formalin-fixed, paraffin-embedded (FFPE) human tissues after heat induced antigen retrieval in pH 6.0 citrate buffer. After incubation with the primary antibody, slides were incubated with biotinylated secondary antibody, followed by alkaline phosphatase-streptavidin and chromogen. The stained slides were evaluated by a pathologist to confirm staining specificity. The optimal working concentration for LS-B3157 was determined to be 10 ug/ml. Western Blot: 1-10 ug/ml. Immunoprecipitation: 1-10 ug/ml. Immunohistochemistry: 10 ug/ml with frozen or paraffin-embedded sections. Tested in IHC using formalin-fixed paraffin-embedded human tissues, HIER antigen retrieval using sodium citrate buffer at pH 6.0.
Uses:	IHC - Paraffin (10 µg/ml), IHC - Frozen (10 µg/ml), Western blot (1 - 10 µg/ml), Immunoprecipitation (1 - 10 µg/ml) (Optimal dilution to be determined by the researcher)
Size:	50 µl
Concentration:	1 mg/ml

Immunohistochemistry Image:



Anti-CENPF antibody IHC of human uterus. Immunohistochemistry of formalin-fixed, paraffin-embedded tissue after heat-induced antigen retrieval. Antibody LS-B3157 concentration 10 ug/ml.

Immunohistochemistry Image:



Anti-CENPF antibody IHC of human placenta. Immunohistochemistry of formalin-fixed, paraffin-embedded tissue after heat-induced antigen retrieval. Antibody LS-B3157 concentration 10 ug/ml.

Requested From:

Japan

Laboratory Reagent For In Vitro Research Use Only

Not for resale without prior written consent from LifeSpan BioSciences, Inc.

Created on 9/23/2014

© 2014 LifeSpan BioSciences