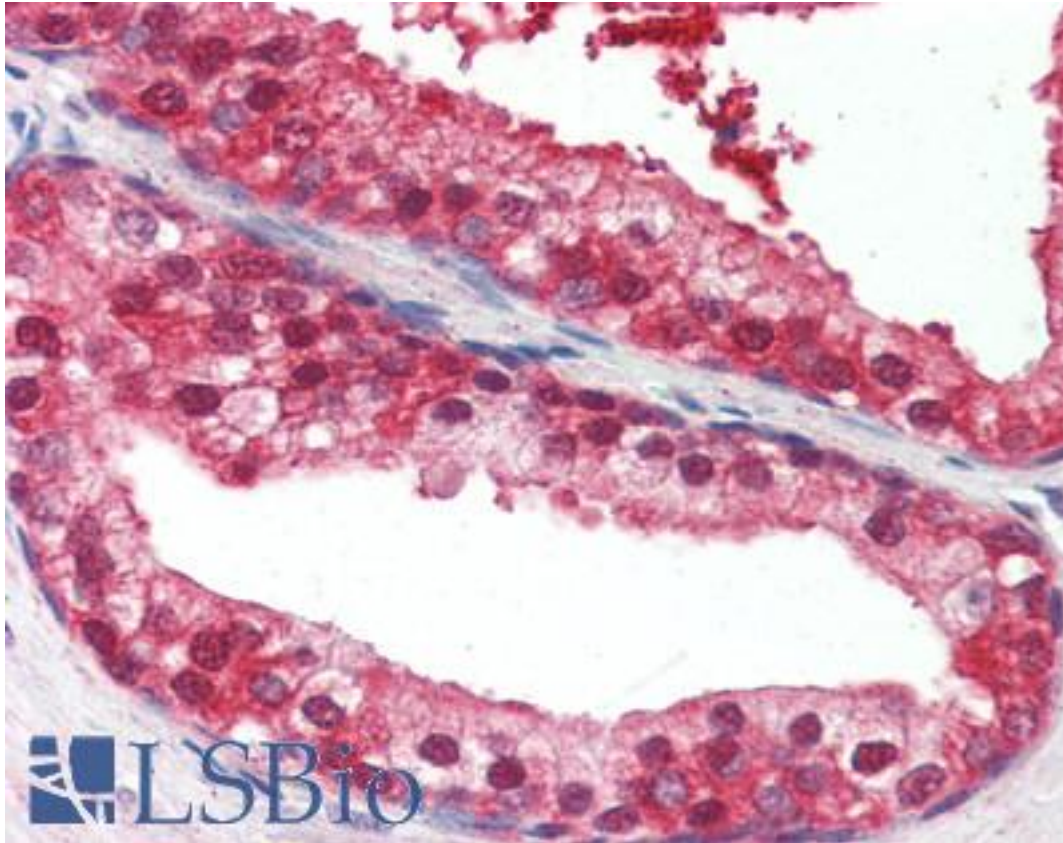


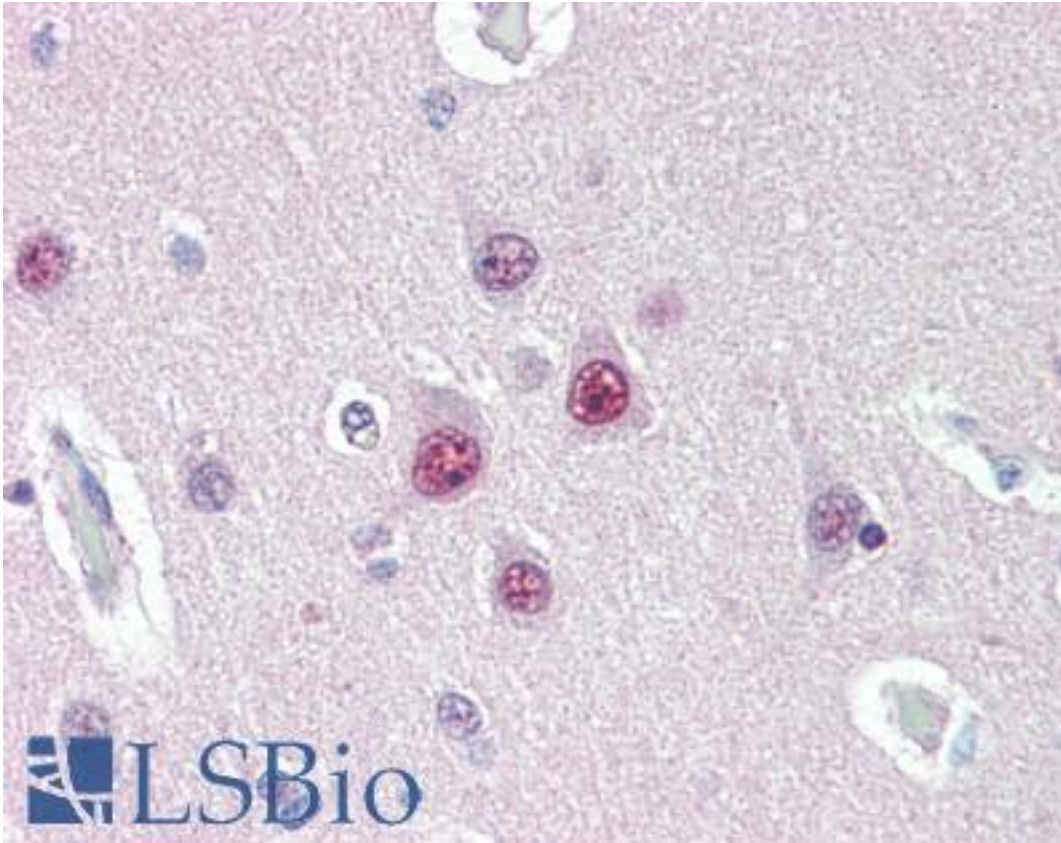
| UBQLN1 / Ubiquilin Mouse anti-Human Monoclonal (Internal) (3D5E2) Antibody - LS-B3142 - LSBio | |
|---|--|
| CatalogID: | LS-B3142 |
| Validation: | This antibody replaces catalog number LS-C40073. It has been validated for use in the following assays: IHC-P. |
| Target: | ubiquilin 1 (UBQLN1) |
| Synonyms: | UBQLN1 Antibody, DA41 Antibody, HPLIC-1 Antibody, PLIC-1 Antibody, Ubiquilin Antibody, UBQN Antibody, XDRP1 Antibody, DSK2 Antibody, PLIC1 Antibody, Ubiquilin 1 Antibody, Ubiquilin-1 Antibody |
| Host | UBQLN1 antibody was produced in Mouse |
| Clonality: | Monoclonal |
| Isotype: | IgG2b,k |
| Clone Name: | 3D5E2 |
| Immunogen Species: | UBQLN1 / Ubiquilin antibody was raised against Human |
| Immunogen: | UBQLN1 / Ubiquilin antibody was raised against recombinant protein derived from an internal region of human ubiquilin. |
| Specificity: | Specific for the ubiquilin protein. On Western blots, it identifies a band at ~66kD. Reactivity has been confirmed with human HEK293 cell lysates. |
| Epitope: | Internal |
| Reactivity: | Human |
| Purification: | Protein A purified |
| Presentation: | PBS, pH 7.4, 0.1% sodium azide. |
| Recommended Storage: | +4°C or -20°C, Avoid repeated freezing and thawing. |
| Usage Summary: | Immunohistochemistry: LS-B3142 was validated for use in immunohistochemistry on a panel of 21 formalin-fixed, paraffin-embedded (FFPE) human tissues after heat induced antigen retrieval in pH 6.0 citrate buffer. After incubation with the primary antibody, slides were incubated with biotinylated secondary antibody, followed by alkaline phosphatase-streptavidin and chromogen. The stained slides were evaluated by a pathologist to confirm staining specificity. The optimal working concentration for LS-B3142 was determined to be 10 ug/ml. Immunoprecipitation: 2 ug/reaction. Use native protein. |
| Uses: | IHC - Paraffin (10 µg/ml), Western blot (1 µg/ml), Immunoprecipitation, ELISA (0.1 - 1 µg/ml) (Optimal dilution to be determined by the researcher) |
| Size: | 50 µg |
| Concentration: | 0.5 mg/ml |

Immunohistochemistry Image:



Anti-UBQLN1 antibody IHC of human prostate. Immunohistochemistry of formalin-fixed, paraffin-embedded tissue after heat-induced antigen retrieval. Antibody LS-B3142 concentration 10 ug/ml.

Immunohistochemistry Image:



Anti-UBQLN1 antibody IHC of human brain, cortex. Immunohistochemistry of formalin-fixed, paraffin-embedded tissue after heat-induced antigen retrieval. Antibody LS-B3142 concentration 10 ug/ml.

Requested From:

Japan

Laboratory Reagent For In Vitro Research Use Only

Not for resale without prior written consent from LifeSpan BioSciences, Inc.

Created on 9/23/2014

© 2014 LifeSpan BioSciences