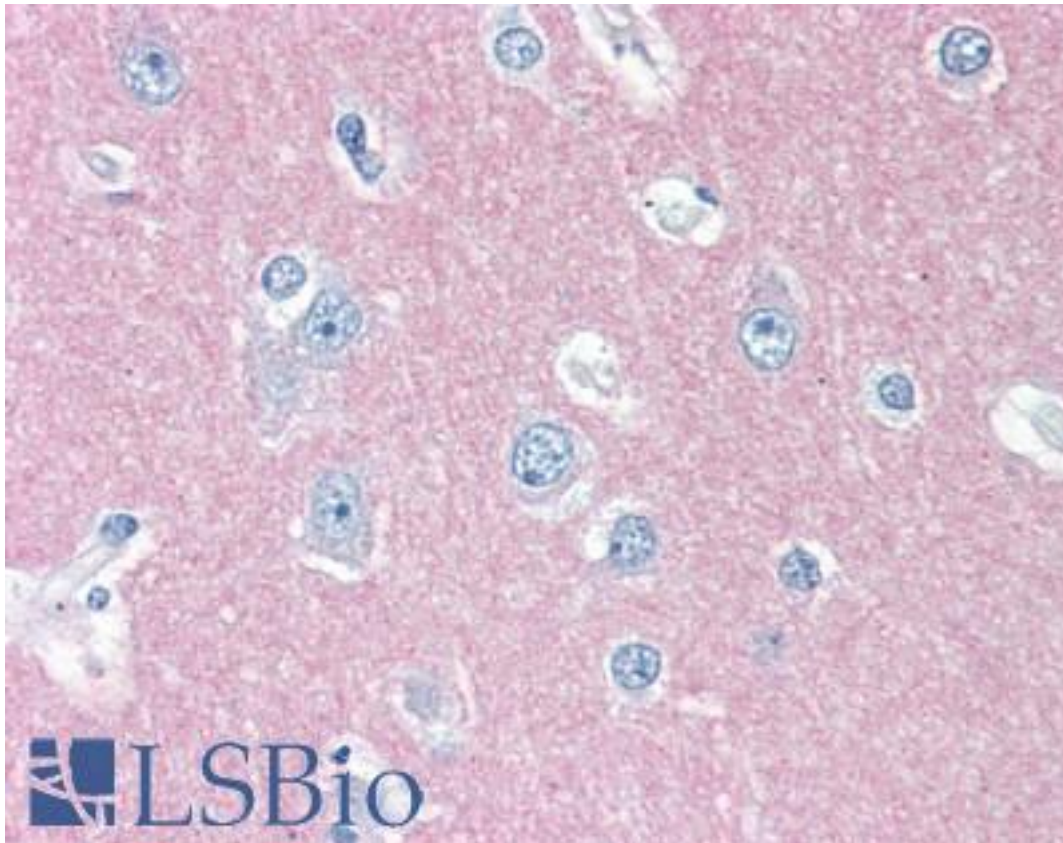


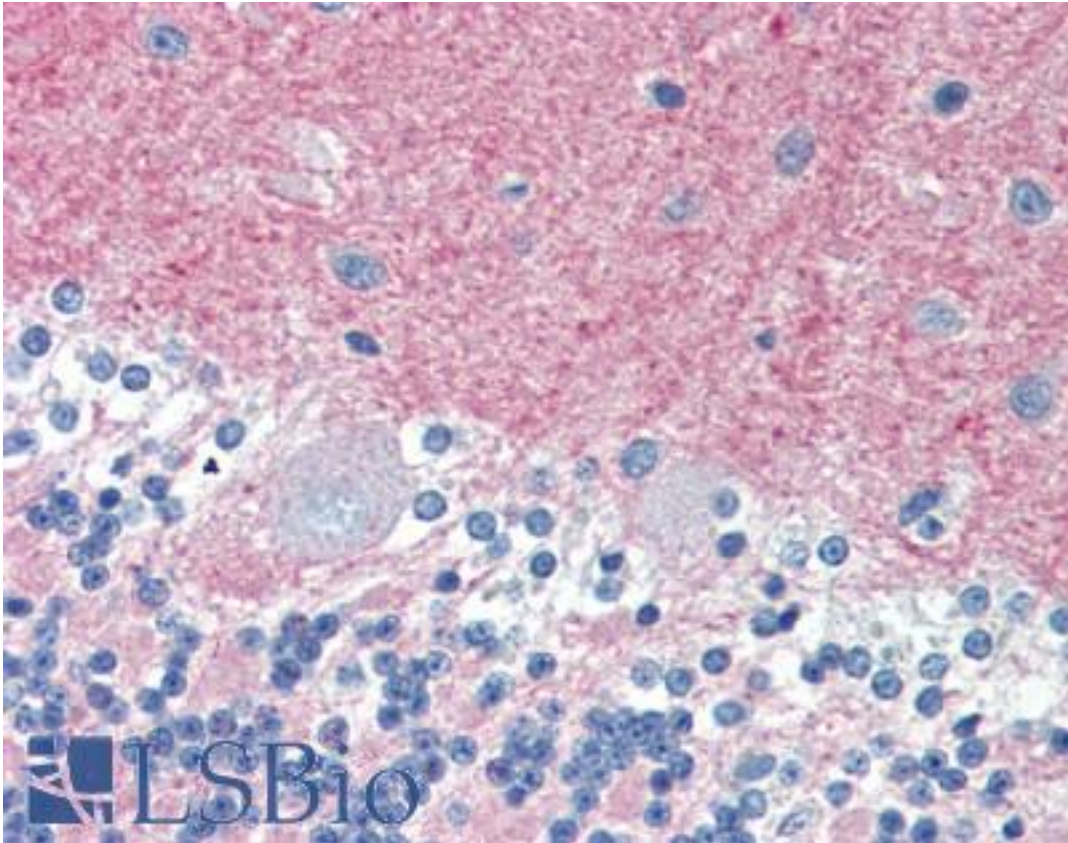
THY1 / CD90 Mouse anti-Human Monoclonal (5E10) Antibody - LS-B3139 - LSBio	
<b>CatalogID:</b>	LS-B3139
<b>Validation:</b>	This antibody replaces catalog number LS-C40929. It has been validated for use in the following assays: IHC-P.
<b>Target:</b>	Thy-1 cell surface antigen (THY1)
<b>Synonyms:</b>	THY1 Antibody, CD90 antigen Antibody, CD90 Antibody, CDw90 Antibody, Thy-1 antigen Antibody, Thy-1 T-cell antigen Antibody, Thy-1 Antibody, Thy-1 cell surface antigen Antibody, Thy-1 membrane glycoprotein Antibody
<b>Host</b>	THY1 antibody was produced in Mouse
<b>Clonality:</b>	Monoclonal
<b>Isotype:</b>	IgG1,k
<b>Clone Name:</b>	5E10
<b>Immunogen Species:</b>	THY1 / CD90 antibody was raised against Human
<b>Immunogen:</b>	THY1 / CD90 antibody was raised against cells.
<b>Specificity:</b>	HEL cells
<b>Reactivity:</b>	Human, Baboon, Monkey
<b>Purification:</b>	Affinity purified
<b>Presentation:</b>	Phosphate-buffered solution, pH 7.2, 0.09% sodium azide.
<b>Recommended Storage:</b>	+4°C, avoid freezing
<b>Usage Summary:</b>	Immunohistochemistry: LS-B3139 was validated for use in immunohistochemistry on a panel of 21 formalin-fixed, paraffin-embedded (FFPE) human tissues after heat induced antigen retrieval in pH 6.0 citrate buffer. After incubation with the primary antibody, slides were incubated with biotinylated secondary antibody, followed by alkaline phosphatase-streptavidin and chromogen. The stained slides were evaluated by a pathologist to confirm staining specificity. The optimal working concentration for LS-B3139 was determined to be 10 ug/ml.
<b>Uses:</b>	IHC - Paraffin (10 µg/ml), IHC - Frozen, Immunoprecipitation, Flow Cytometry (Optimal dilution to be determined by the researcher)
<b>Size:</b>	50 µg
<b>Concentration:</b>	0.5 mg/ml

**Immunohistochemistry Image:**



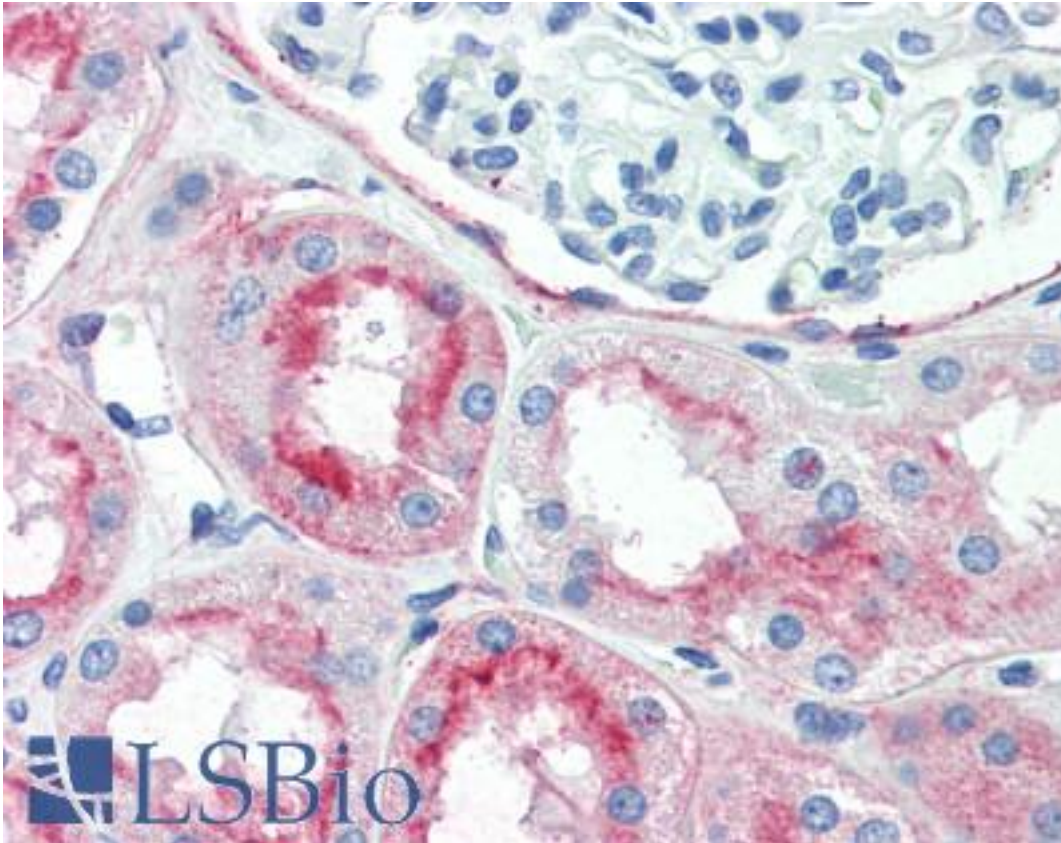
Anti-THY1 antibody IHC of human brain, cortex. Immunohistochemistry of formalin-fixed, paraffin-embedded tissue after heat-induced antigen retrieval. Antibody LS-B3139 concentration 10 ug/ml.

**Immunohistochemistry Image:**



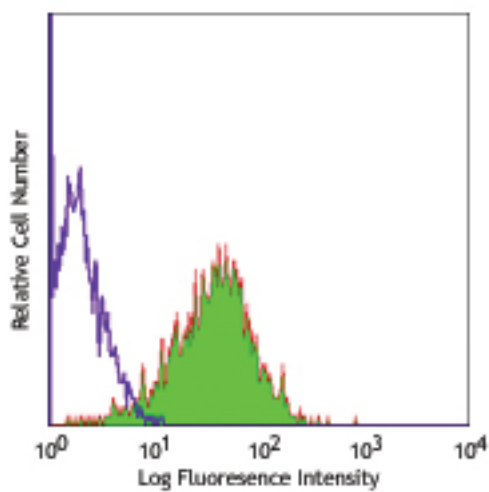
Anti-THY1 antibody IHC of human brain, cerebellum. Immunohistochemistry of formalin-fixed, paraffin-embedded tissue after heat-induced antigen retrieval. Antibody LS-B3139 concentration 10 ug/ml.

**Immunohistochemistry Image:**



Anti-THY1 antibody IHC of human kidney. Immunohistochemistry of formalin-fixed, paraffin-embedded tissue after heat-induced antigen retrieval. Antibody LS-B3139 concentration 10 ug/ml.

**Flow Cytometry Image:**



Human erythroleukemic cell line HEL stained with purified 5E10, followed by anti-mouse IgG FITC.

Requested From:

Japan

Laboratory Reagent For In Vitro Research Use Only

Not for resale without prior written consent from LifeSpan BioSciences, Inc.

Created on 9/23/2014

© 2014 LifeSpan BioSciences