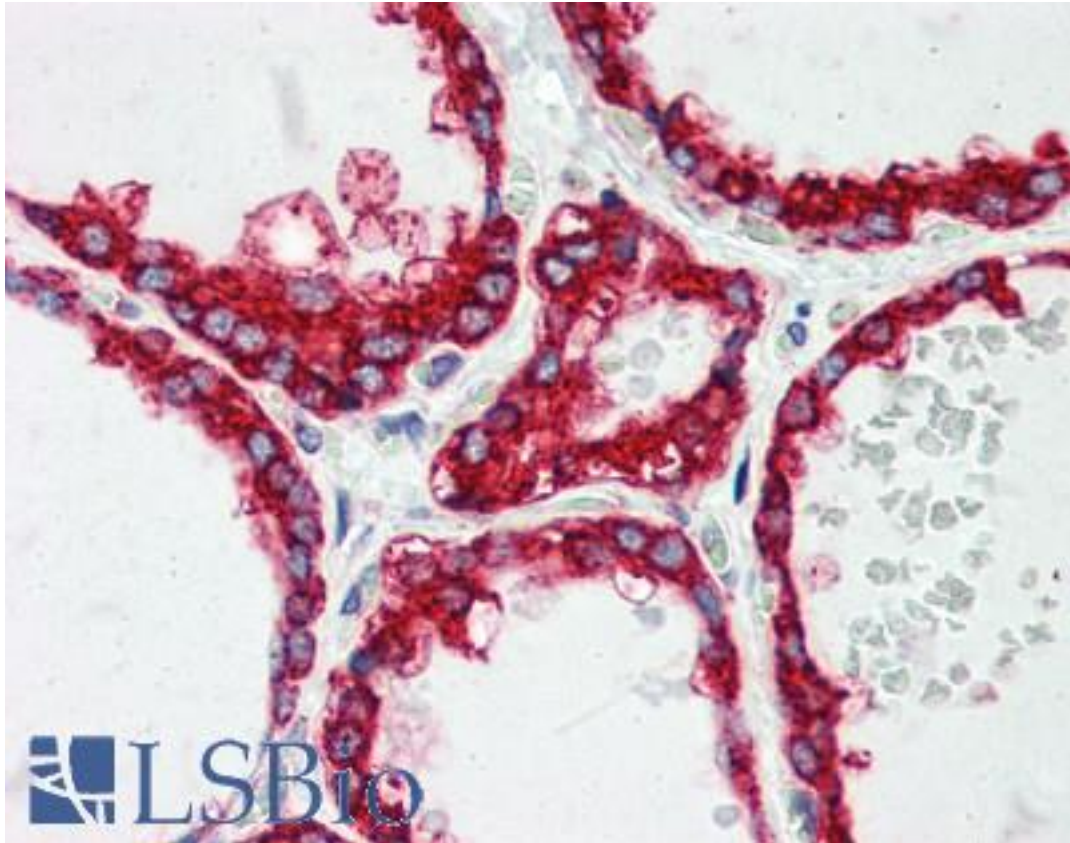


**PDI / P4HB Mouse anti-Rat Monoclonal (aa499-509) Antibody - LS-B3137 - LSBio**

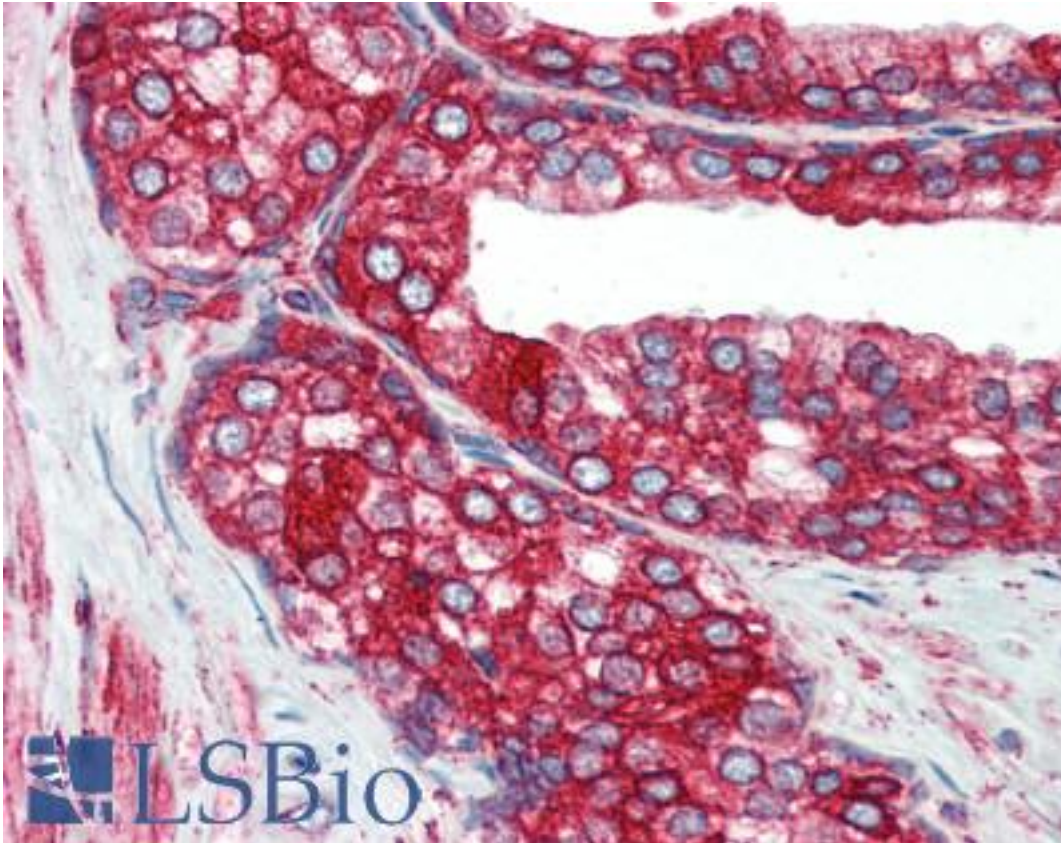
<b>CatalogID:</b>	LS-B3137
<b>Validation:</b>	This antibody replaces catalog number LS-C38113. It has been validated for use in the following assays: IHC-P.
<b>Target:</b>	prolyl 4-hydroxylase, beta polypeptide (P4HB)
<b>Synonyms:</b>	P4HB Antibody, ERBA2L Antibody, DSI Antibody, GIT Antibody, p4HB Antibody, p4Hbeta Antibody, PDIA1 Antibody, PHDB Antibody, PO4DB Antibody, PROHB Antibody, Protocollagen hydroxylase Antibody, Protein disulfide-isomerase Antibody, PO4HB Antibody, PDI Antibody
<b>Host</b>	P4HB antibody was produced in Mouse
<b>Clonality:</b>	Monoclonal
<b>Isotype:</b>	IgG1
<b>Immunogen Species:</b>	PDI / P4HB antibody was raised against Rat
<b>Antigen Type:</b>	Synthetic peptide
<b>Immunogen:</b>	PDI / P4HB antibody was raised against synthetic peptide corresponding to aa499-509 of rat protein disulfide isomerase (KLH coupled).
<b>Specificity:</b>	Recognizes rat protein disulfide isomerase at ~58kD.
<b>Epitope:</b>	aa499-509
<b>Reactivity:</b>	Rat, Human, Monkey, Mouse, Bovine, Dog, Guinea pig, Hamster, Pig, Rabbit, Sheep, Chicken, Xenopus
<b>Purification:</b>	Protein G purified
<b>Presentation:</b>	PBS, pH 7.2, 0.09% sodium azide, 50% glycerol.
<b>Recommended Storage:</b>	+4°C or -20°C, Avoid repeated freezing and thawing.
<b>Usage Summary:</b>	Immunohistochemistry: LS-B3137 was validated for use in immunohistochemistry on a panel of 21 formalin-fixed, paraffin-embedded (FFPE) human tissues after heat induced antigen retrieval in pH 6.0 citrate buffer. After incubation with the primary antibody, slides were incubated with biotinylated secondary antibody, followed by alkaline phosphatase-streptavidin and chromogen. The stained slides were evaluated by a pathologist to confirm staining specificity. The optimal working concentration for LS-B3137 was determined to be 5 ug/ml. Positive control: HeLa Heat Shocked Cell Lysate, MCF-7 cell lysate.
<b>Uses:</b>	IHC - Paraffin (5 µg/ml), ICC, Western blot (Optimal dilution to be determined by the researcher)
<b>Size:</b>	50 µg
<b>Concentration:</b>	1 mg/ml

**Immunohistochemistry Image:**



Anti-P4HB antibody IHC of human thyroid. Immunohistochemistry of formalin-fixed, paraffin-embedded tissue after heat-induced antigen retrieval. Antibody LS-B3137 concentration 5 ug/ml.

**Immunohistochemistry Image:**



Anti-P4HB antibody IHC of human prostate. Immunohistochemistry of formalin-fixed, paraffin-embedded tissue after heat-induced antigen retrieval. Antibody LS-B3137 concentration 5 ug/ml.

**Requested From:**

Japan

Laboratory Reagent For In Vitro Research Use Only

Not for resale without prior written consent from LifeSpan BioSciences, Inc.

Created on 9/23/2014

© 2014 LifeSpan BioSciences