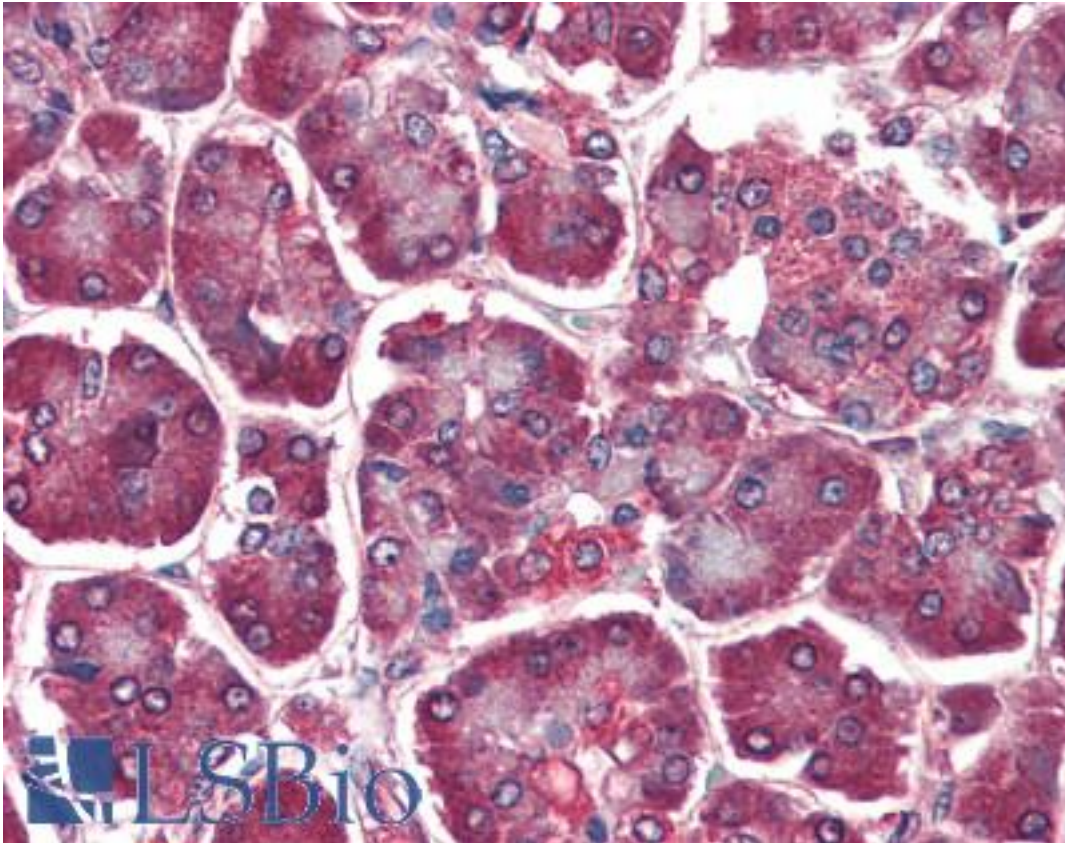


DAGLA Goat anti-Human Polyclonal (C-Terminus) Antibody - LS-B3123 - LSBio

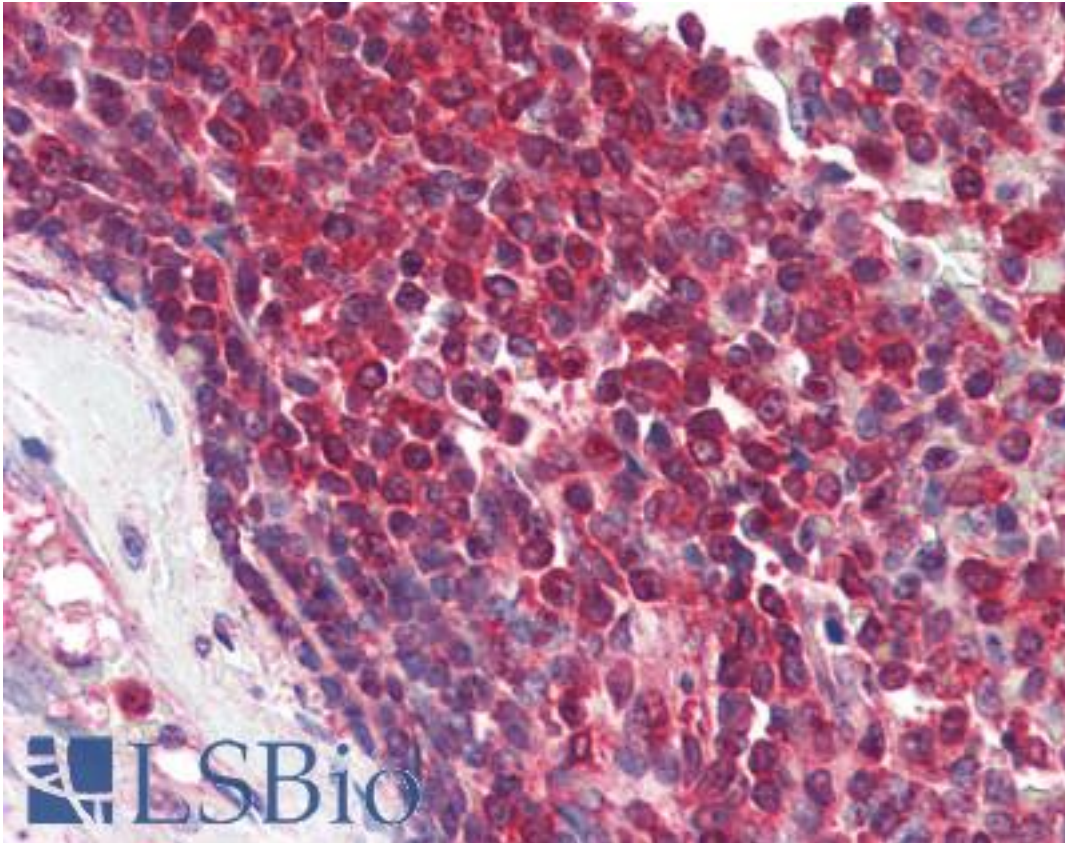
CatalogID:	LS-B3123
Validation:	This antibody replaces catalog number LS-C87335. It has been validated for use in the following assays: IHC-P.
Target:	diacylglycerol lipase, alpha (DAGLA)
Synonyms:	DAGLA Antibody, DAGLALPHA Antibody, DGL-alpha Antibody, Diacylglycerol lipase, alpha Antibody, KIAA0659 Antibody, C11orf11 Antibody, DAGL(ALPHA) Antibody, NSDDR Antibody
Host	DAGLA antibody was produced in Goat
Clonality:	Polyclonal
Immunogen Species:	DAGLA antibody was raised against Human
Antigen Type:	Synthetic peptide
Immunogen:	DAGLA antibody was raised against synthetic peptide C-PAKQDELVISAR from the C-terminus of human DAGLA (NP_006124.1). Percent identity by BLAST analysis: Human, Gorilla, Gibbon, Monkey (100%); Marmoset, Elephant, Panda (92%); Mouse, Rat, Hamster, Bovine, Rabbit, Horse, Pig (83%).
Specificity:	Human DAGLA.
Epitope:	C-Terminus
Reactivity:	Human, Gorilla, Gibbon
Predicted Reactivity:	Monkey
Purification:	Immunoaffinity purified
Presentation:	Tris-buffered saline, pH 7.3, 0.5% BSA, 0.02% sodium azide
Recommended Storage:	Store at -20°C. Minimize freezing and thawing.
Usage Summary:	Immunohistochemistry: LS-B3123 was validated for use in immunohistochemistry on a panel of 21 formalin-fixed, paraffin-embedded (FFPE) human tissues after heat induced antigen retrieval in pH 6.0 citrate buffer. After incubation with the primary antibody, slides were incubated with biotinylated secondary antibody, followed by alkaline phosphatase-streptavidin and chromogen. The stained slides were evaluated by a pathologist to confirm staining specificity. The optimal working concentration for LS-B3123 was determined to be 5 ug/ml. Peptide ELISA: antibody detection limit dilution 1:128000. Western Blot: Approx 125kD band observed in Human Liver lysates (calculated MW of 115kD according to NP_006124.1). Recommended concentration: 0.3-1 ug/ml. Some minor background is detected and is blocked by the immunizing peptide.
Uses:	IHC - Paraffin (5 ug/ml), Western blot (0.3 - 1 ug/ml), ELISA (1:128000) & (0.3 - 1 ug/ml) (Optimal dilution to be determined by the researcher)
Size:	50 ug
Concentration:	0.5 mg/ml

Immunohistochemistry Image:



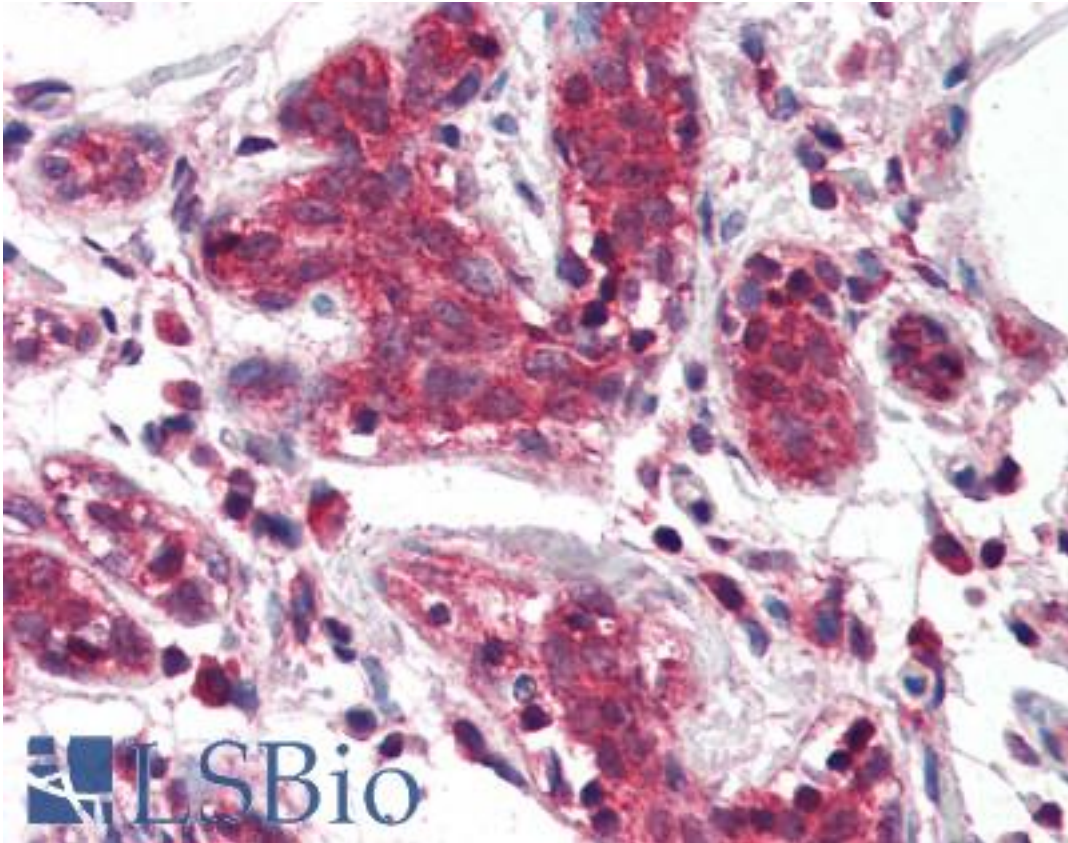
Anti-DAGLA antibody IHC of human pancreas. Immunohistochemistry of formalin-fixed, paraffin-embedded tissue after heat-induced antigen retrieval. Antibody LS-B3123 concentration 5 ug/ml.

Immunohistochemistry Image:



Anti-DAGLA antibody IHC of human spleen. Immunohistochemistry of formalin-fixed, paraffin-embedded tissue after heat-induced antigen retrieval. Antibody LS-B3123 concentration 5 ug/ml.

Immunohistochemistry Image:



Anti-DAGLA antibody IHC of human breast. Immunohistochemistry of formalin-fixed, paraffin-embedded tissue after heat-induced antigen retrieval. Antibody LS-B3123 concentration 5 ug/ml.

Western Blot Image:



Antibody (0.3 ug/ml) staining of Human Liver lysate (35 ug protein in RIPA buffer). Primary incubation was 1 hour. Detected by chemiluminescence.

Requested From:

Japan

Laboratory Reagent For In Vitro Research Use Only

Not for resale without prior written consent from LifeSpan BioSciences, Inc.

Created on 9/23/2014

© 2014 LifeSpan BioSciences