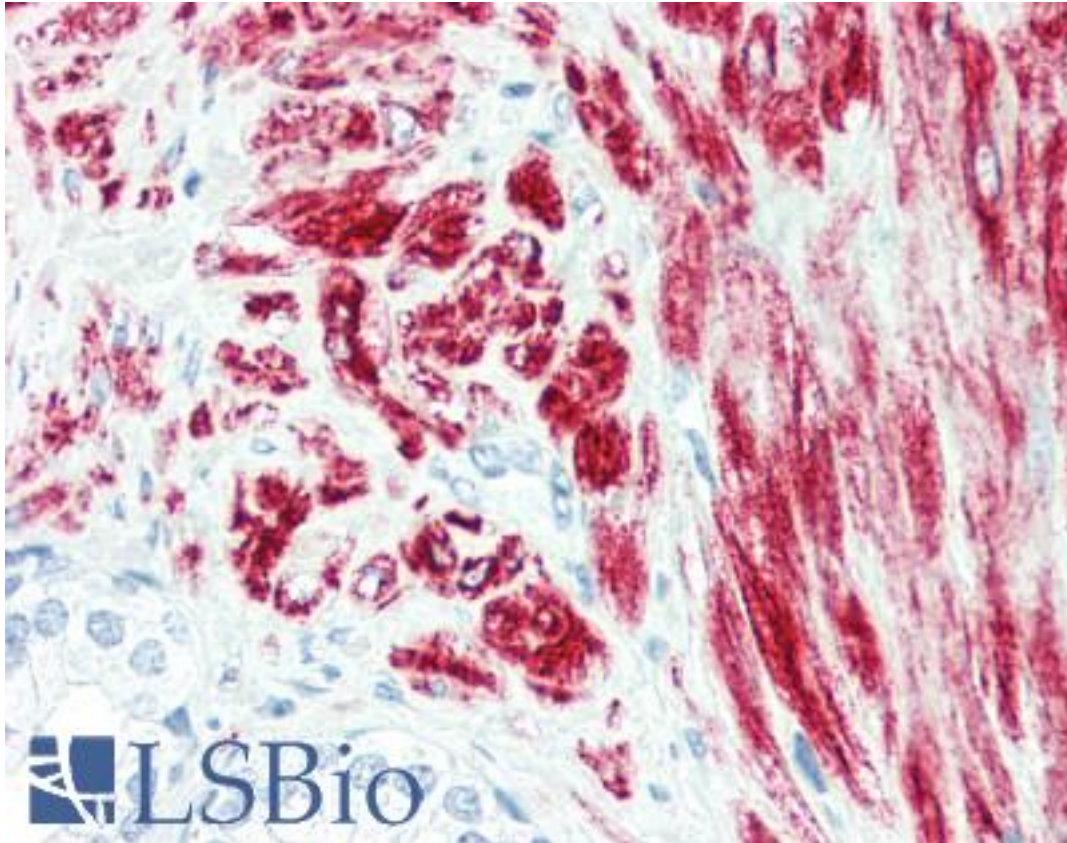


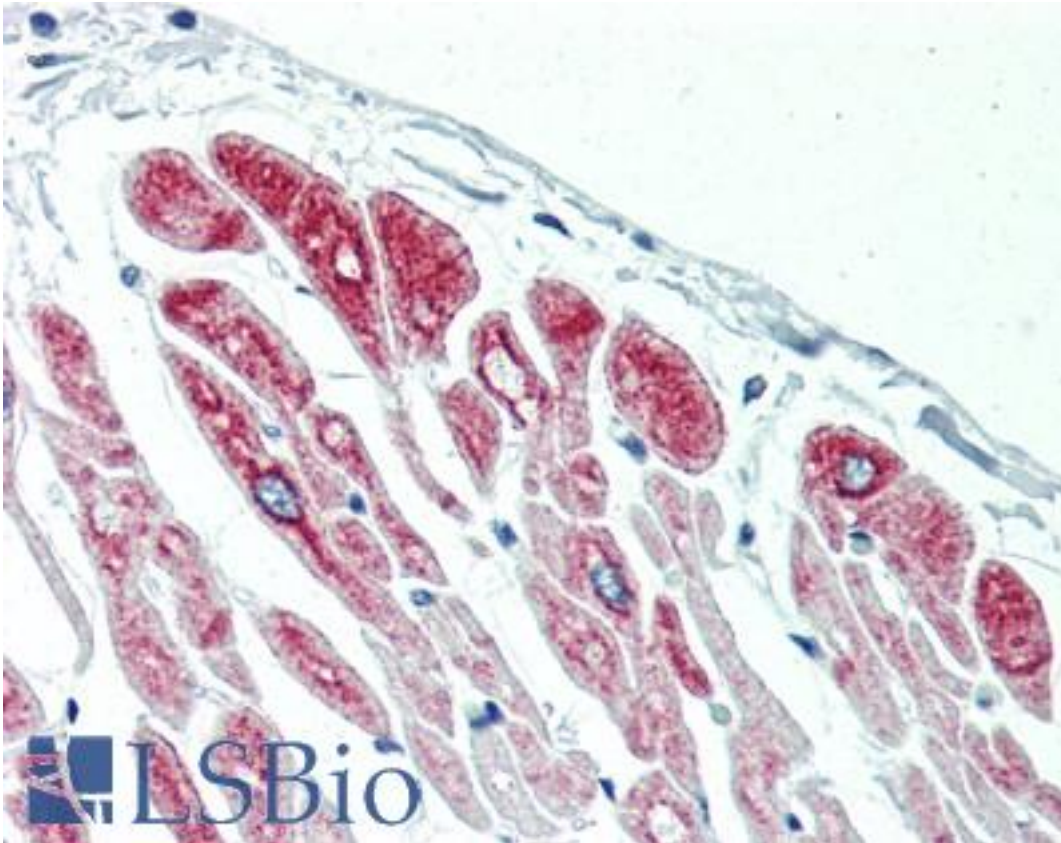
DES / Desmin Mouse anti-Human Monoclonal Antibody - LS-B3122 - LSBio	
<b>CatalogID:</b>	LS-B3122
<b>Validation:</b>	This antibody replaces catalog number LS-C22794. It has been validated for use in the following assays: IHC-P.
<b>Target:</b>	desmin
<b>Synonyms:</b>	DES Antibody, ARVC7 Antibody, ARVD7 Antibody, CMD11 Antibody, CSM1 Antibody, CSM2 Antibody, MFM1 Antibody, SCPNK Antibody, Desmin Antibody, Intermediate filament protein Antibody
<b>Host</b>	DES antibody was produced in Mouse
<b>Clonality:</b>	Monoclonal
<b>Isotype:</b>	IgG2b
<b>Immunogen Species:</b>	DES / Desmin antibody was raised against Human
<b>Immunogen:</b>	DES / Desmin antibody was raised against desmin.
<b>Specificity:</b>	Reactive with smooth and striated muscle cells and their tumors e. g. rhabdomyosarcoma and leiomyosarcoma.
<b>Reactivity:</b>	Human, Mouse, Rat, Dog, Hamster, Pig, Rabbit
<b>Purification:</b>	Protein G purified
<b>Presentation:</b>	PBS, 0.09% sodium azide, 40% glycerol.
<b>Recommended Storage:</b>	Short term: 4°C. Long term: Aliquot and add glycerol (40-50%). Store at -20°C. Avoid freeze-thaw cycles.
<b>Usage Summary:</b>	Immunohistochemistry: LS-B3122 was validated for use in immunohistochemistry on a panel of 21 formalin-fixed, paraffin-embedded (FFPE) human tissues after heat induced antigen retrieval in pH 6.0 citrate buffer. After incubation with the primary antibody, slides were incubated with biotinylated secondary antibody, followed by alkaline phosphatase-streptavidin and chromogen. The stained slides were evaluated by a pathologist to confirm staining specificity. The optimal working concentration for LS-B3122 was determined to be 10 ug/ml.
<b>Uses:</b>	IHC - Paraffin (10 µg/ml), IHC - Frozen, Western blot (Optimal dilution to be determined by the researcher)
<b>Size:</b>	50 µg
<b>Concentration:</b>	0.5 mg/ml

**Immunohistochemistry Image:**



Anti-DES / Desmin antibody IHC of human prostate. Immunohistochemistry of formalin-fixed, paraffin-embedded tissue after heat-induced antigen retrieval. Antibody LS-B3122 concentration 10 ug/ml.

**Immunohistochemistry Image:**



Anti-DES / Desmin antibody IHC of human heart. Immunohistochemistry of formalin-fixed, paraffin-embedded tissue after heat-induced antigen retrieval. Antibody LS-B3122 concentration 10 ug/ml.

**Requested From:**

Japan

Laboratory Reagent For In Vitro Research Use Only

Not for resale without prior written consent from LifeSpan BioSciences, Inc.

Created on 9/23/2014

© 2014 LifeSpan BioSciences