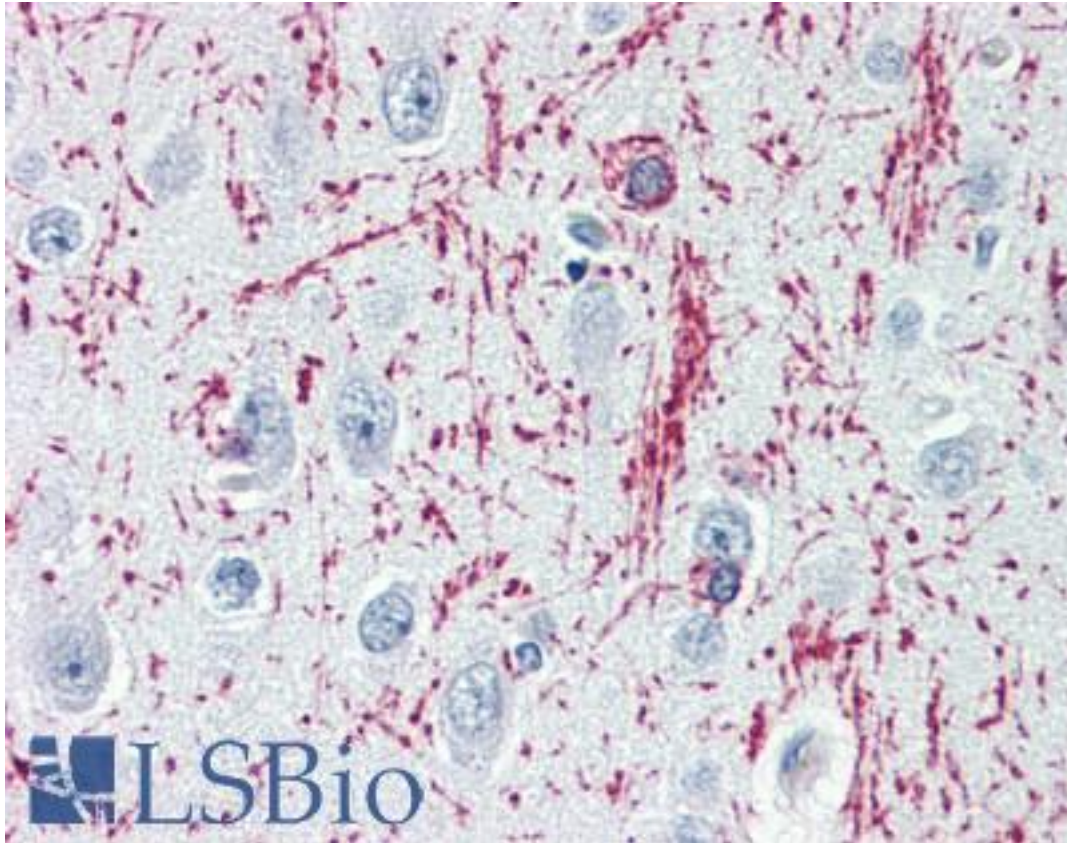


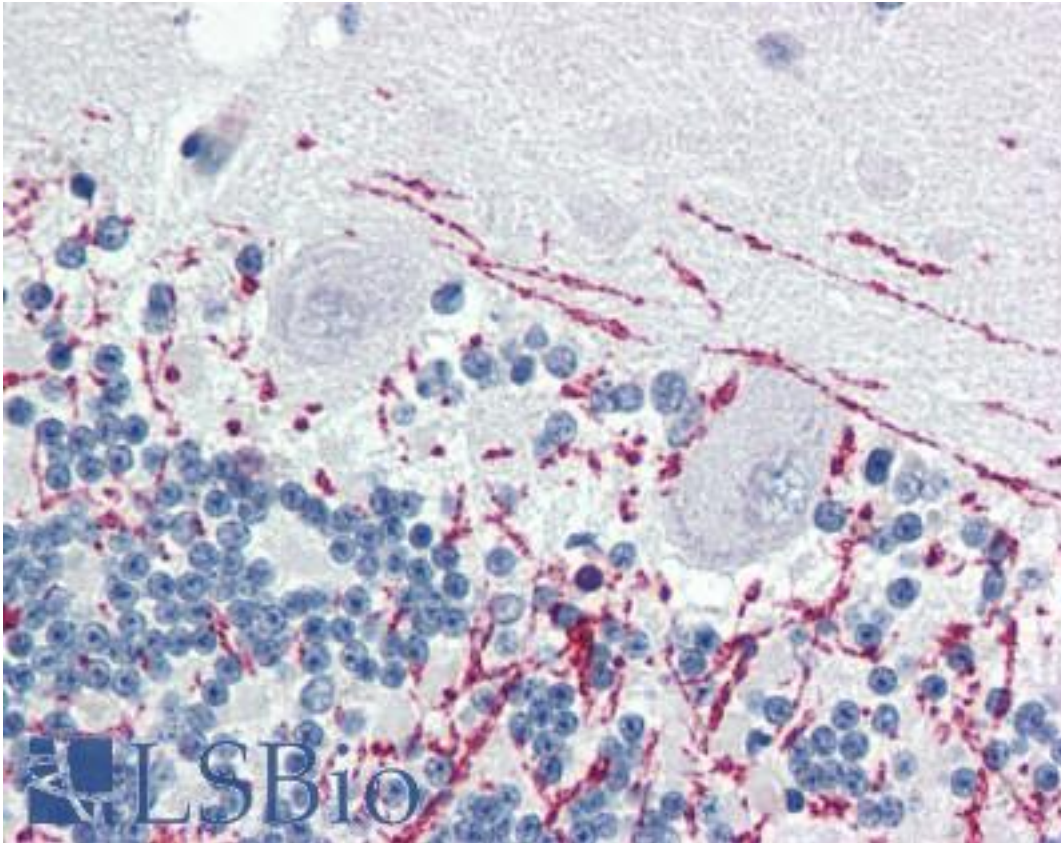
Myelin Basic Protein / MBP Rabbit anti-Human Polyclonal Antibody - LS-B3112 - LSBio	
CatalogID:	LS-B3112
Validation:	This antibody replaces catalog number LS-C25703. It has been validated for use in the following assays: IHC-P.
Target:	myelin basic protein (MBP)
Synonyms:	MBP Antibody, Myelin A1 protein Antibody, Myelin basic protein Antibody
Host	MBP antibody was produced in Rabbit
Clonality:	Polyclonal
Isotype:	IgG
Immunogen Species:	Myelin Basic Protein / MBP antibody was raised against Human
Immunogen:	Myelin Basic Protein / MBP antibody was raised against human myelin basic protein from brain.
Specificity:	Suitable for labeling of oligodendrocytes and myelin of white matter in brain and spinal cord (gray matter stains less abundantly). Also stains peripheral nerves.
Reactivity:	Human
Purification:	Ammonium sulfate precipitation
Presentation:	0.05M Tris HCL, pH 7.6, 15 mM sodium azide before the addition of glycerol to 40%
Recommended Storage:	Long term: -20°C; Short term: +4°C. Avoid repeat freeze-thaw cycles.
Usage Summary:	Immunohistochemistry: LS-B3112 was validated for use in immunohistochemistry on a panel of 21 formalin-fixed, paraffin-embedded (FFPE) human tissues after heat induced antigen retrieval in pH 6.0 citrate buffer. After incubation with the primary antibody, slides were incubated with biotinylated secondary antibody, followed by alkaline phosphatase-streptavidin and chromogen. The stained slides were evaluated by a pathologist to confirm staining specificity. The optimal working concentration for LS-B3112 was determined to be 1:100. Western Blot: 1:1500 in TTBS, overnight at 4uC.
Uses:	IHC - Paraffin (1:100), Western blot (1:1500) (Optimal dilution to be determined by the researcher)
Size:	50 µl

Immunohistochemistry Image:



Anti-Myelin Basic Protein antibody IHC of human brain, cortex. Immunohistochemistry of formalin-fixed, paraffin-embedded tissue after heat-induced antigen retrieval. Antibody LS-B3112 dilution 1:100.

Immunohistochemistry Image:



Anti-Myelin Basic Protein antibody IHC of human brain, cerebellum. Immunohistochemistry of formalin-fixed, paraffin-embedded tissue after heat-induced antigen retrieval. Antibody LS-B3112 dilution 1:100.

Requested From:

Japan

Laboratory Reagent For In Vitro Research Use Only

Not for resale without prior written consent from LifeSpan BioSciences, Inc.

Created on 9/23/2014

© 2014 LifeSpan BioSciences