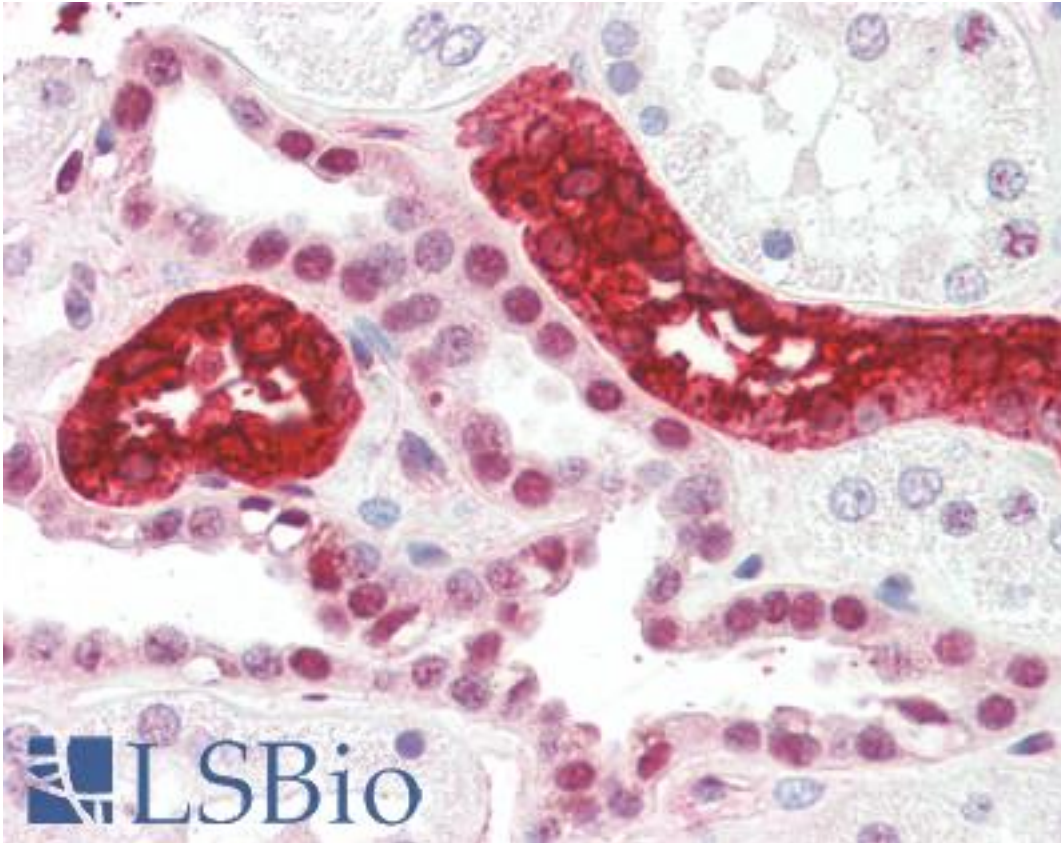


UMOD / Uromodulin Mouse anti-Human Monoclonal (FITC) (10.32) Antibody - LS-B3105 - LSBio	
CatalogID:	LS-B3105
Validation:	This antibody replaces catalog number LS-C62646. It has been validated for use in the following assays: IHC-P.
Target:	uromodulin (UMOD)
Synonyms:	UMOD Antibody, ADMCKD2 Antibody, FJHN Antibody, HNFJ Antibody, MCKD2 Antibody, THGP Antibody, THP Antibody, Uromucoid Antibody, Tamm-Horsfall glycoprotein Antibody, HNFJ1 Antibody, Uromodulin Antibody
Host	UMOD antibody was produced in Mouse
Clonality:	Monoclonal
Isotype:	IgG2b
Clone Name:	10.32
Conjugations:	Fluorescein (FITC)
Immunogen Species:	UMOD / Uromodulin antibody was raised against Human
Antigen Type:	Purified protein
Immunogen:	UMOD / Uromodulin antibody was raised against human Tamm-Horsfall protein
Specificity:	Anti-human Tamm-Horsfall protein (THP) is a monoclonal antibody which reacts with an epitope of the urinary mucoprotein. Tamm-Horsfall protein is a glycoprotein of approximately 80 kD containing up to 25% carbohydrate by weight.
Reactivity:	Human, Dog
Purification:	Protein G purified
Presentation:	PBS, 0.02% sodium azide, EIA grade BSA. Sourced in Ascites.
Recommended Storage:	Short term 4 C, Long term -20 C, Product is photosensitive and should be protected from light. Avoid freeze-thaw cycles.
Usage Summary:	Immunohistochemistry: LS-B3105 was validated for use in immunohistochemistry on a panel of 21 formalin-fixed, paraffin-embedded (FFPE) human tissues after heat induced antigen retrieval in pH 6.0 citrate buffer. After incubation with the primary antibody, slides were incubated with biotinylated secondary antibody, followed by alkaline phosphatase-streptavidin and chromogen. The stained slides were evaluated by a pathologist to confirm staining specificity. The optimal working concentration for LS-B3105 was determined to be 1:50.
Uses:	IHC - Paraffin (1:50) (Optimal dilution to be determined by the researcher)
Size:	50 µg
Concentration:	0.1 mg/ml

Immunohistochemistry Image:



Anti-UMOD / Uromodulin antibody IHC of human kidney. Immunohistochemistry of formalin-fixed, paraffin-embedded tissue after heat-induced antigen retrieval. Antibody LS-B3105 dilution 1:50.

Requested From:

Japan

Laboratory Reagent For In Vitro Research Use Only

Not for resale without prior written consent from LifeSpan BioSciences, Inc.

Created on 9/23/2014

© 2014 LifeSpan BioSciences