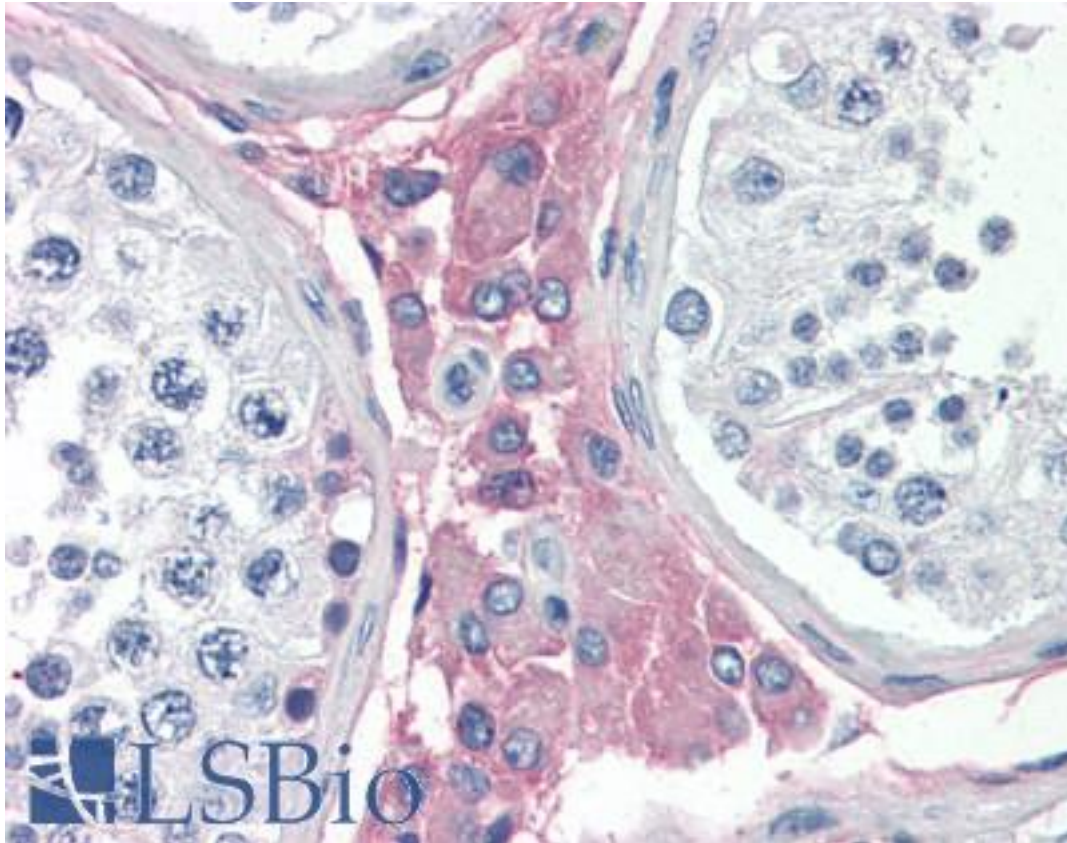


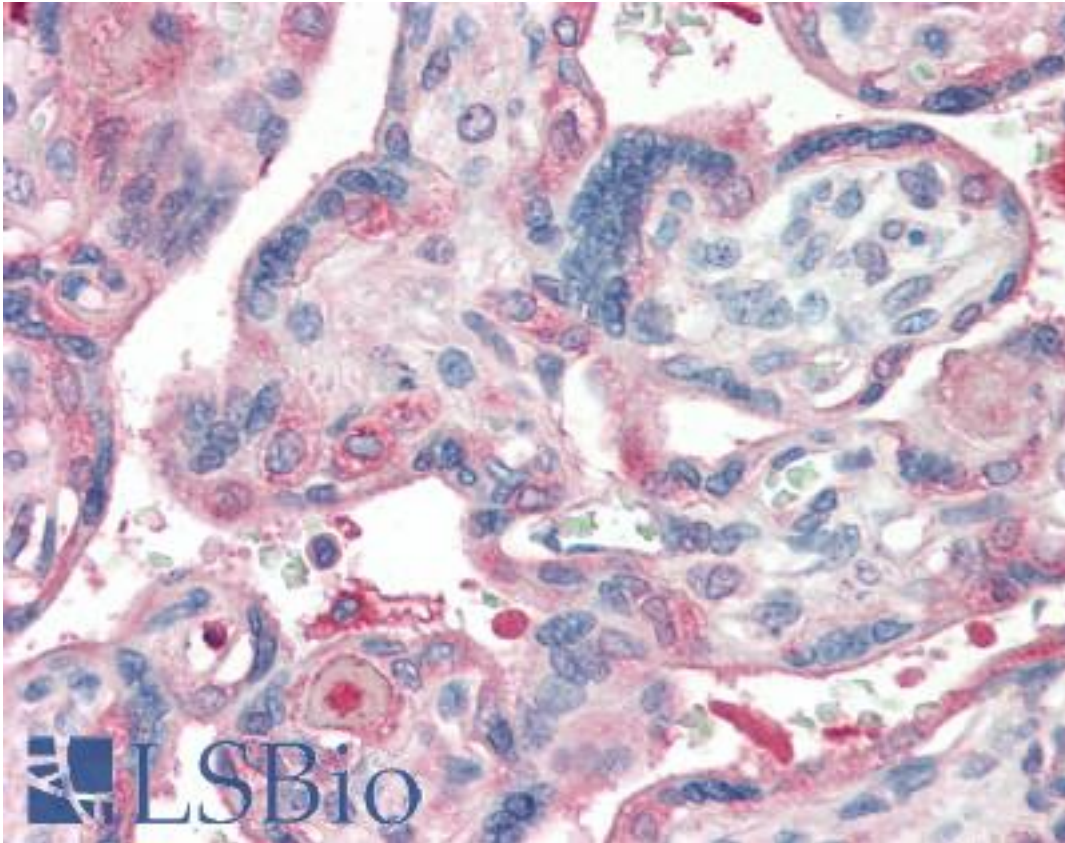
Laminin Rabbit anti-Human Polyclonal Antibody - LS-B3103 - LSBio	
<b>CatalogID:</b>	LS-B3103
<b>Validation:</b>	This antibody replaces catalog number LS-C60067. It has been validated for use in the following assays: IHC-P.
<b>Target:</b>	Laminin
<b>Host</b>	Laminin antibody was produced in Rabbit
<b>Clonality:</b>	Polyclonal
<b>Immunogen Species:</b>	Laminin antibody was raised against Human
<b>Antigen Type:</b>	Synthetic peptide
<b>Immunogen:</b>	Laminin antibody was raised against mixture of synthetic peptides corresponding to regions of adherence on laminin.
<b>Specificity:</b>	Typically less than 1% cross reactivity against other extracellular matrix proteins was detected by ELISA against purified standards. This antibody reacts with most mammalian Laminins and has negligible cross-reactivity with Type I, II, III, IV, V or VI Collagens or Fibronectin. Non-specific cross-reaction of anti-Laminin antibodies with other human serum proteins or non-Laminin extracellular matrix proteins is negligible
<b>Reactivity:</b>	Human
<b>Purification:</b>	Immunoaffinity purified
<b>Presentation:</b>	0.125 M sodium borate, 0.075 M sodium chloride, 0.005 M EDTA, pH 8.0, 0.01% sodium azide.
<b>Recommended Storage:</b>	Store vial at 4 C prior to opening. This product is stable 4 C as an undiluted liquid. Dilute only prior to immediate use. For extended storage mix with an equal volume of glycerol, aliquot contents and freeze at -20 C or below.
<b>Usage Summary:</b>	Immunohistochemistry: LS-B3103 was validated for use in immunohistochemistry on a panel of 21 formalin-fixed, paraffin-embedded (FFPE) human tissues after heat induced antigen retrieval in pH 6.0 citrate buffer. After incubation with the primary antibody, slides were incubated with biotinylated secondary antibody, followed by alkaline phosphatase-streptavidin and chromogen. The stained slides were evaluated by a pathologist to confirm staining specificity. The optimal working concentration for LS-B3103 was determined to be 5 ug/ml.
<b>Uses:</b>	IHC - Paraffin (5 µg/ml), Western blot (1:5000 - 1:10000), Immunoprecipitation, ELISA (1:4000 - 1:8000) (Optimal dilution to be determined by the researcher)
<b>Size:</b>	50 µg
<b>Concentration:</b>	1 mg/ml

**Immunohistochemistry Image:**



Anti-Laminin antibody IHC of human testis. Immunohistochemistry of formalin-fixed, paraffin-embedded tissue after heat-induced antigen retrieval. Antibody LS-B3103 concentration 5 ug/ml.

**Immunohistochemistry Image:**



Anti-Laminin antibody IHC of human placenta. Immunohistochemistry of formalin-fixed, paraffin-embedded tissue after heat-induced antigen retrieval. Antibody LS-B3103 concentration 5 ug/ml.

**Requested From:**

Japan

Laboratory Reagent For In Vitro Research Use Only

Not for resale without prior written consent from LifeSpan BioSciences, Inc.

Created on 9/23/2014

© 2014 LifeSpan BioSciences