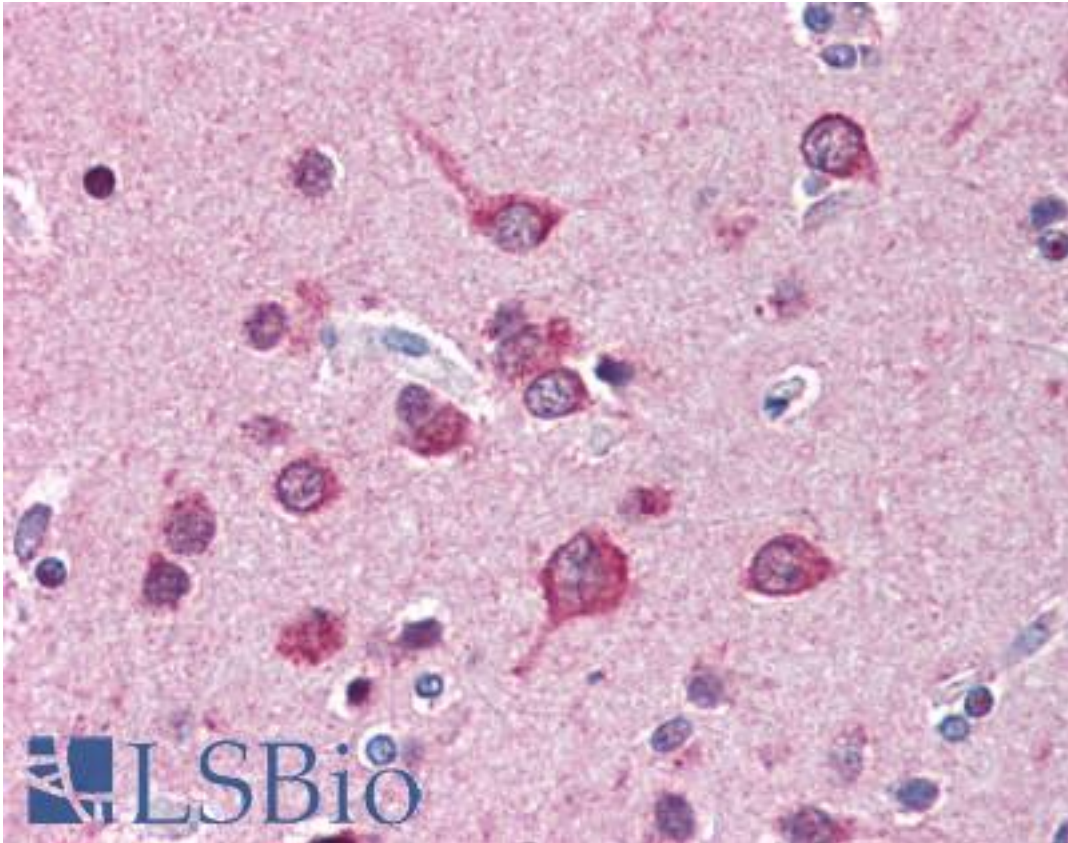


TRIP / LRRFIP1 Rabbit anti-Human Polyclonal (aa690-707) Antibody - LS-B3098 - LSBio

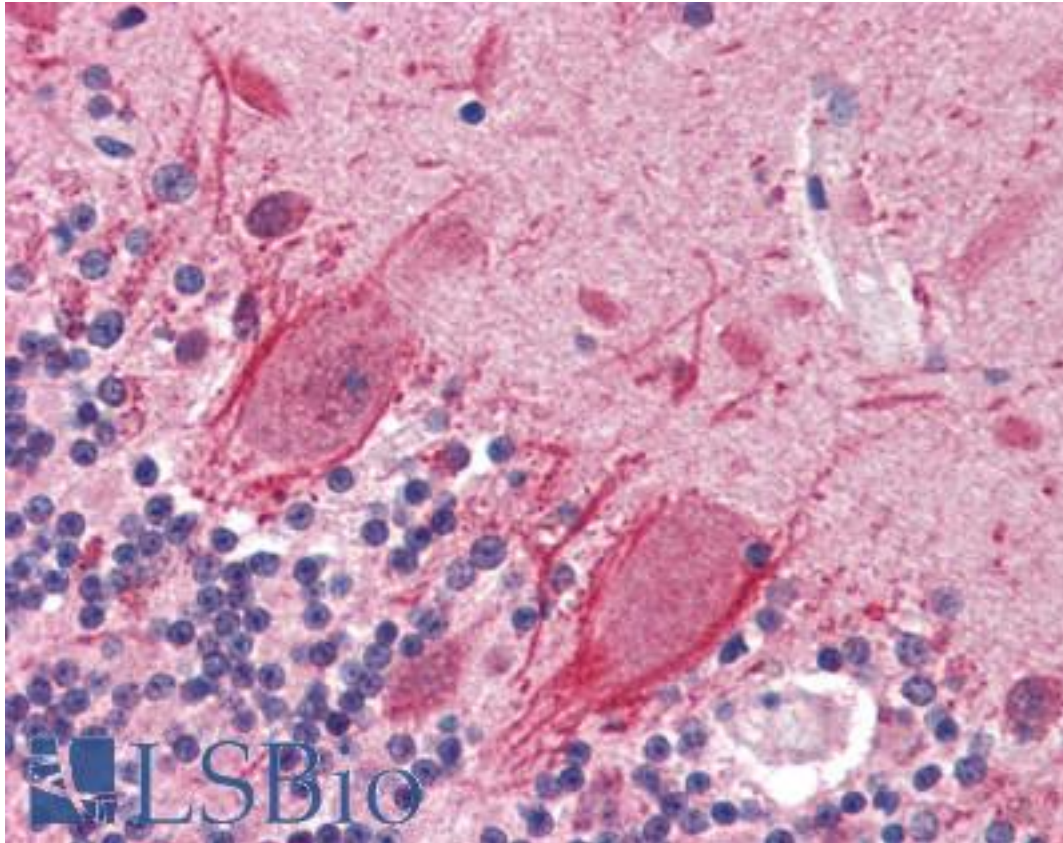
<b>CatalogID:</b>	LS-B3098
<b>Validation:</b>	This antibody replaces catalog number LS-C26379. It has been validated for use in the following assays: IHC-P.
<b>Target:</b>	leucine rich repeat (in FLII) interacting protein 1 (LRRFIP1)
<b>Synonyms:</b>	LRRFIP1 Antibody, FLAP-1 Antibody, FLAP1 Antibody, FLIIAP1 Antibody, GCF2 Antibody, LRR FLII-interacting protein 1 Antibody, HUF1-1 Antibody, Tcf9 Antibody, Tcf-9 Antibody, TRIP Antibody, NEDD8-conjugating enzyme Antibody, TAR RNA-interacting protein Antibody, Transcription factor 9 Antibody, GC-binding factor 2 Antibody, GCF-2 Antibody
<b>Host</b>	LRRFIP1 antibody was produced in Rabbit
<b>Clonality:</b>	Polyclonal
<b>Isotype:</b>	IgG
<b>Immunogen Species:</b>	TRIP / LRRFIP1 antibody was raised against Human
<b>Antigen Type:</b>	Synthetic peptide - KLH conjugated
<b>Immunogen:</b>	TRIP / LRRFIP1 antibody was raised against synthetic peptide aa690-707, SPAEPKSEADRC of human TRIP RNA Binding Protein (KLH). MW: 89.25kD. Percent identity by BLAST analysis: Human (100%); Gorilla, Gibbon (92%).
<b>Specificity:</b>	Recognizes human TRIP RNA Binding Protein.
<b>Epitope:</b>	aa690-707
<b>Reactivity:</b>	Human
<b>Predicted Reactivity:</b>	Gorilla, Gibbon
<b>Purification:</b>	Affinity purified
<b>Presentation:</b>	PBS, pH 7.2, 0.01% sodium azide, 40% glycerol.
<b>Recommended Storage:</b>	Long term: -20°C; Short term: +4°C. Avoid repeat freeze-thaw cycles.
<b>Usage Summary:</b>	Immunohistochemistry: LS-B3098 was validated for use in immunohistochemistry on a panel of 21 formalin-fixed, paraffin-embedded (FFPE) human tissues after heat induced antigen retrieval in pH 6.0 citrate buffer. After incubation with the primary antibody, slides were incubated with biotinylated secondary antibody, followed by alkaline phosphatase-streptavidin and chromogen. The stained slides were evaluated by a pathologist to confirm staining specificity. The optimal working concentration for LS-B3098 was determined to be 5 ug/ml. Western Blot: Preliminary results: HeLa cells 90, 130kD.
<b>Uses:</b>	IHC - Paraffin (5 µg/ml), ELISA (Optimal dilution to be determined by the researcher)
<b>Size:</b>	50 µg
<b>Concentration:</b>	0.2 mg/ml

**Immunohistochemistry Image:**



Anti-LRRFIP1 antibody IHC of human brain, cortex. Immunohistochemistry of formalin-fixed, paraffin-embedded tissue after heat-induced antigen retrieval. Antibody LS-B3098 concentration 5 ug/ml.

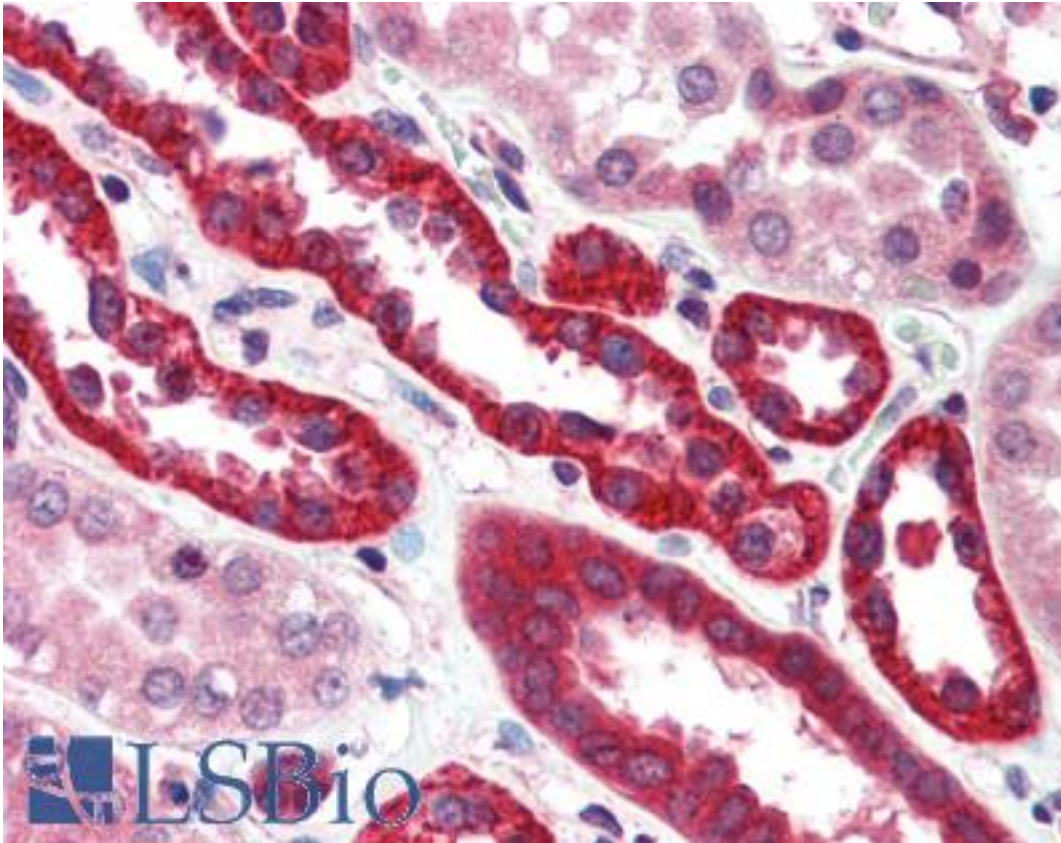
**Immunohistochemistry Image:**



Anti-LRRFIP1 antibody IHC of human brain, cerebellum. Immunohistochemistry of formalin-fixed, paraffin-embedded tissue after heat-induced antigen retrieval. Antibody LS-B3098 concentration 5 ug/ml.



**Immunohistochemistry Image:**



Anti-LRRFIP1 antibody IHC of human kidney. Immunohistochemistry of formalin-fixed, paraffin-embedded tissue after heat-induced antigen retrieval. Antibody LS-B3098 concentration 5 ug/ml.

**Requested From:**

Japan

Laboratory Reagent For In Vitro Research Use Only

Not for resale without prior written consent from LifeSpan BioSciences, Inc.

Created on 9/23/2014

© 2014 LifeSpan BioSciences