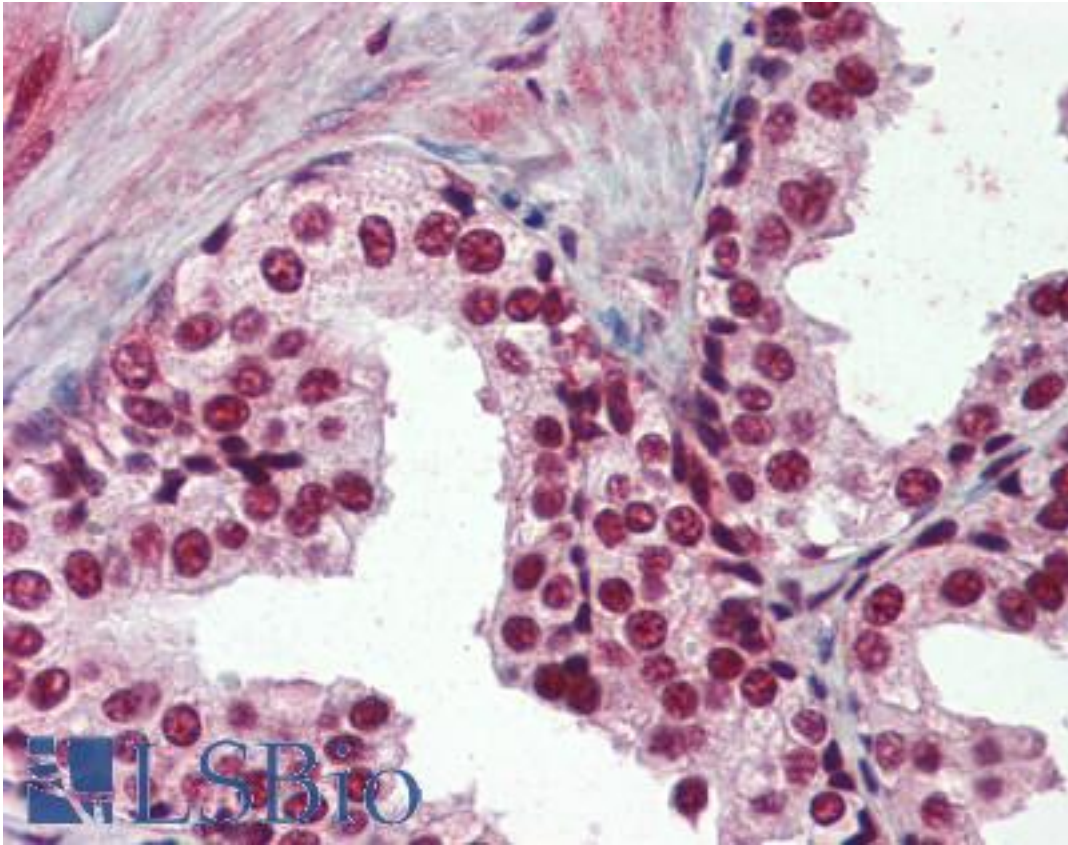


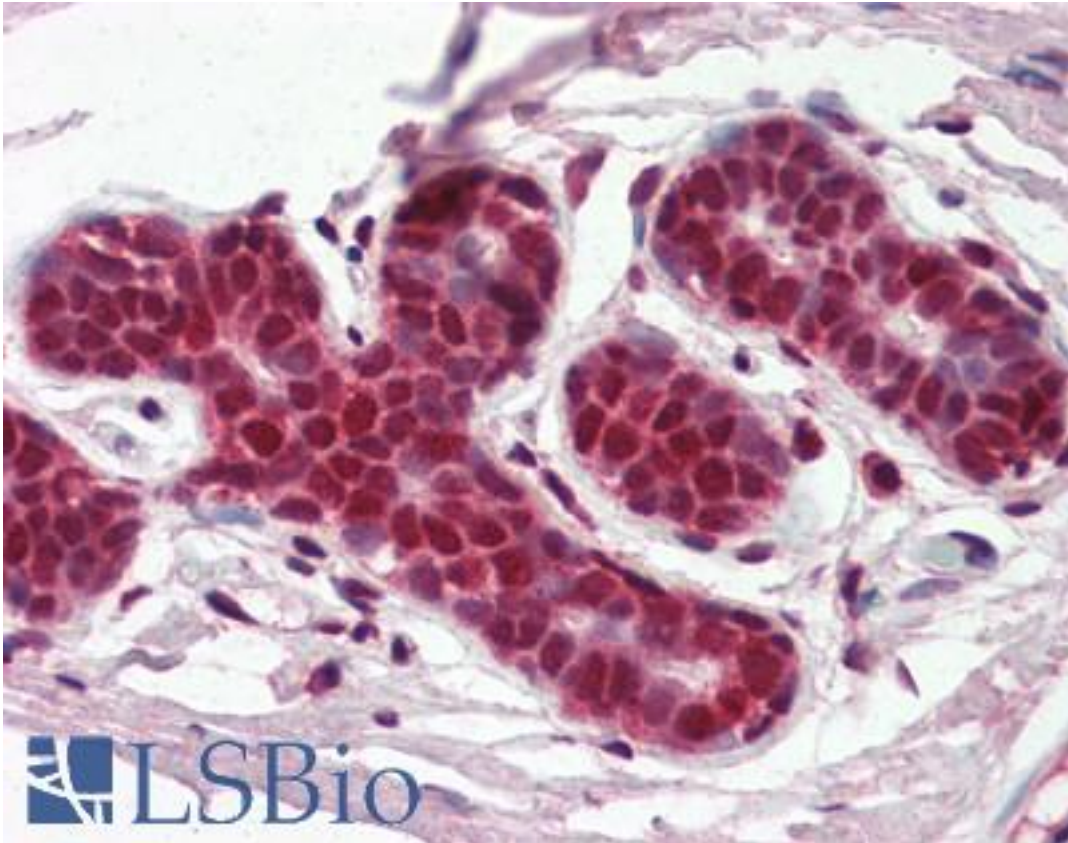
SF1 Rabbit anti-Human Polyclonal (aa10-25) Antibody - LS-B3095 - LSBio	
CatalogID:	LS-B3095
Validation:	This antibody replaces catalog number LS-C10333. It has been validated for use in the following assays: IHC-P.
Target:	splicing factor 1 (SF1)
Synonyms:	SF1 Antibody, D11S636 Antibody, MBBP Antibody, ZCCHC25 Antibody, Transcription factor ZFM1 Antibody, Zinc finger gene in MEN1 locus Antibody, Zinc finger protein 162 Antibody, BBP Antibody, ZNF162 Antibody, Splicing factor 1 Antibody, ZFM1 Antibody
Host	SF1 antibody was produced in Rabbit
Clonality:	Polyclonal
Isotype:	IgG
Immunogen Species:	SF1 antibody was raised against Human
Antigen Type:	Synthetic peptide - KLH conjugated
Immunogen:	SF1 antibody was raised against synthetic peptide corresponding to aa10-25, LDFPSKKRKRSRWNQD of human SF1 (KLH). MW: 68.3kD. Percent identity by BLAST analysis: Human, Gibbon, Baboon, Monkey, Galago, Marmoset, Mouse, Rat, Shrew, Elephant, Bovine, Bat, Dog, Rabbit, Horse (100%); Gorilla, Panda, Pig, Armadillo (94%).
Specificity:	Recognizes human SF1. Species cross-reactivity: Rodent.
Epitope:	aa10-25
Reactivity:	Human, Gibbon, Monkey, Mouse, Rat, Bat, Bovine, Dog, Horse, Rabbit
Predicted Reactivity:	Gorilla, Pig
Purification:	Immunoaffinity purified
Presentation:	PBS, 0.02% sodium azide, 40% glycerol.
Recommended Storage:	Long term: -20°C; Short term: +4°C. Avoid repeat freeze-thaw cycles.
Usage Summary:	Immunohistochemistry: LS-B3095 was validated for use in immunohistochemistry on a panel of 21 formalin-fixed, paraffin-embedded (FFPE) human tissues after heat induced antigen retrieval in pH 6.0 citrate buffer. After incubation with the primary antibody, slides were incubated with biotinylated secondary antibody, followed by alkaline phosphatase-streptavidin and chromogen. The stained slides were evaluated by a pathologist to confirm staining specificity. The optimal working concentration for LS-B3095 was determined to be 10 ug/ml. Western Blot: Preliminary results: K562 cell line 50, 60, 100kD, HeLa 60, 65, 70, 100, 110kD. Human lung 65, 75kD.
Uses:	IHC - Paraffin (10 µg/ml), ELISA (Optimal dilution to be determined by the researcher)
Size:	50 µg
Concentration:	1 mg/ml

Immunohistochemistry Image:



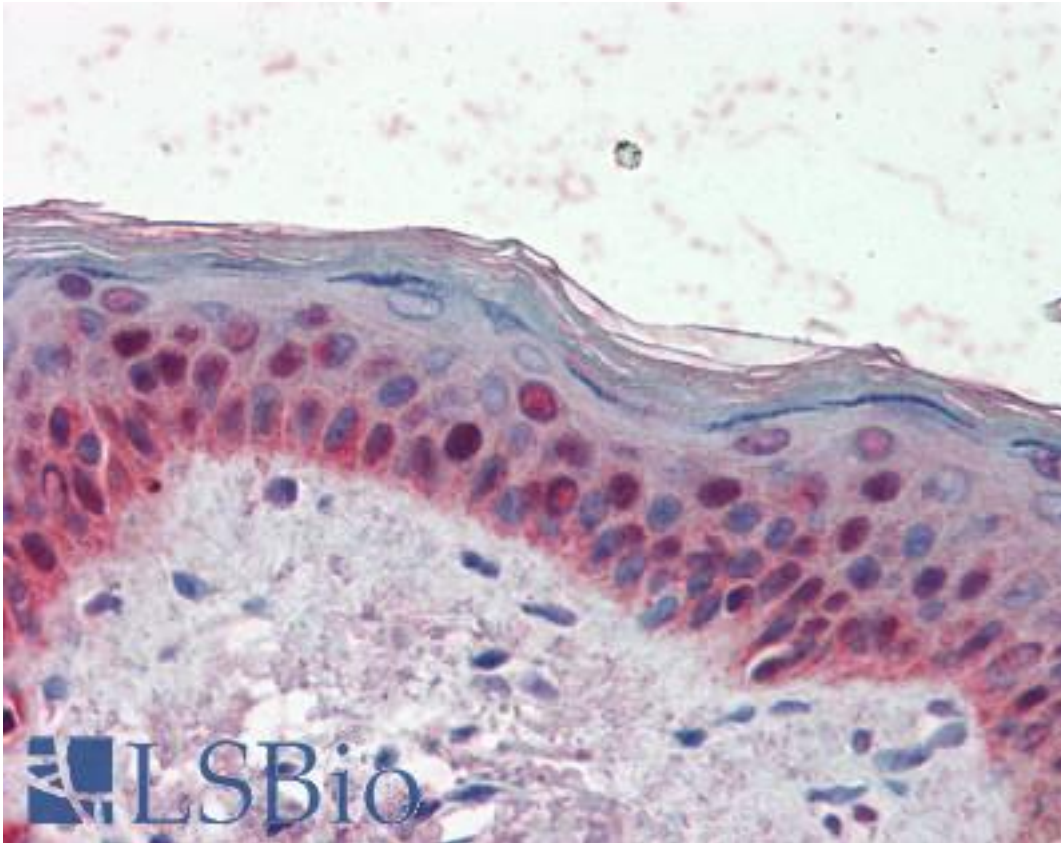
Anti-SF1 antibody IHC of human prostate. Immunohistochemistry of formalin-fixed, paraffin-embedded tissue after heat-induced antigen retrieval. Antibody LS-B3095 concentration 10 ug/ml.

Immunohistochemistry Image:



Anti-SF1 antibody IHC of human breast. Immunohistochemistry of formalin-fixed, paraffin-embedded tissue after heat-induced antigen retrieval. Antibody LS-B3095 concentration 10 ug/ml.

Immunohistochemistry Image:



Anti-SF1 antibody IHC of human skin. Immunohistochemistry of formalin-fixed, paraffin-embedded tissue after heat-induced antigen retrieval. Antibody LS-B3095 concentration 10 ug/ml.

Requested From:

Japan

Laboratory Reagent For In Vitro Research Use Only

Not for resale without prior written consent from LifeSpan BioSciences, Inc.

Created on 9/23/2014

© 2014 LifeSpan BioSciences