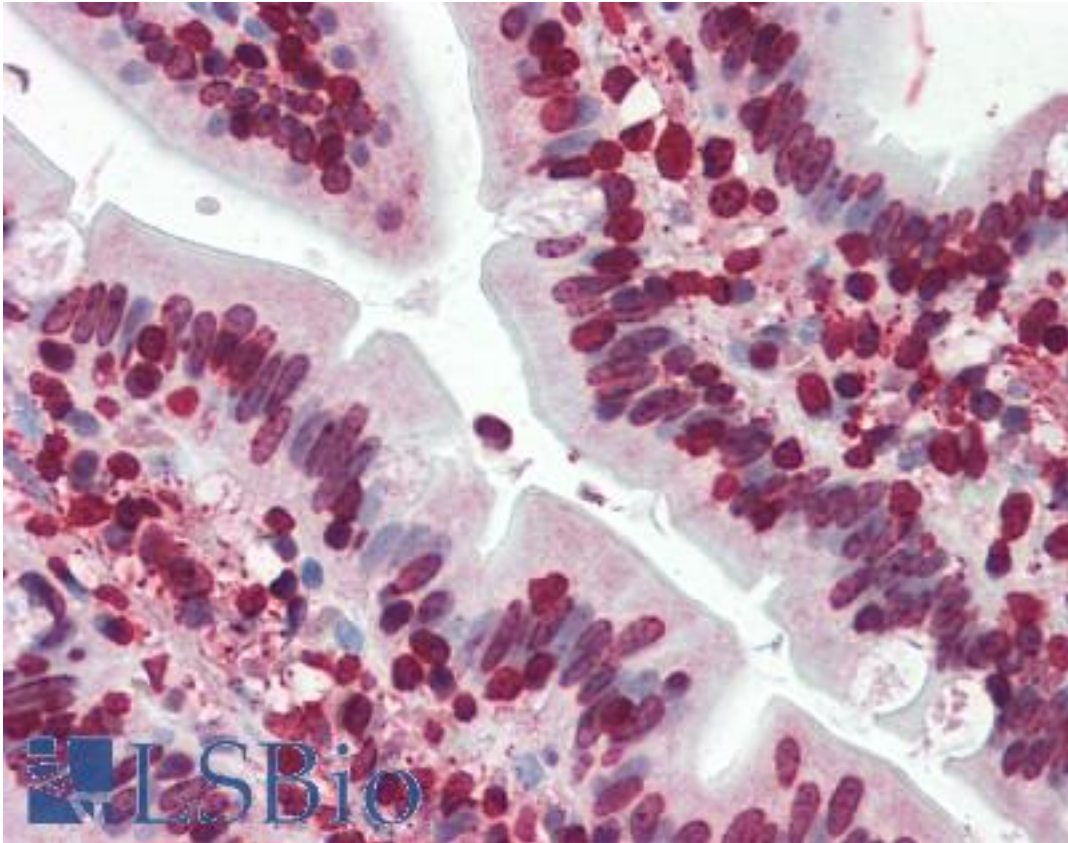


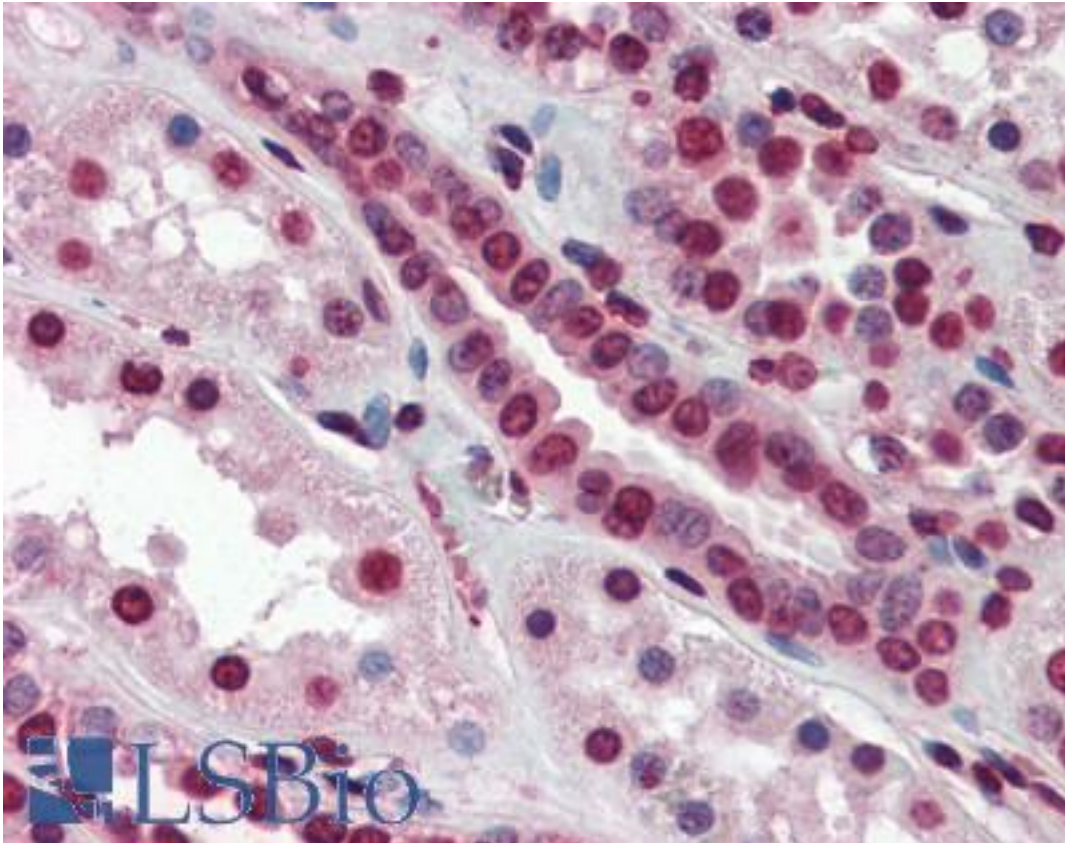
SRSF5 / SFRS5 Rabbit anti-Human Polyclonal (aa91-103) Antibody - LS-B3091 - LSBio	
CatalogID:	LS-B3091
Validation:	This antibody replaces catalog number LS-C10328. It has been validated for use in the following assays: IHC-P.
Target:	serine/arginine-rich splicing factor 5 (SRSF5)
Synonyms:	SRSF5 Antibody, HRS Antibody, SR splicing factor 5 Antibody, Delayed-early protein HRS Antibody, Pre-mRNA-splicing factor SRP40 Antibody, SFRS5 Antibody, SRP40 Antibody
Host	SRSF5 antibody was produced in Rabbit
Clonality:	Polyclonal
Isotype:	IgG
Immunogen Species:	SRSF5 / SFRS5 antibody was raised against Human
Antigen Type:	Synthetic peptide - KLH conjugated
Immunogen:	SRSF5 / SFRS5 antibody was raised against synthetic peptide aa91-103 (SRRPRNDRRNAPP) of human Splicing Factor, Arginine/Serine-Rich 5. KLH conjugated. MW: 31.2kD. Percent identity by BLAST analysis: Human, Gorilla, Gibbon, Monkey, Marmoset, Mouse, Rat, Hamster, Elephant, Panda, Bovine, Dog, Bat, Horse, Rabbit, Pig, Opossum, Platypus (100%); Turkey, Chicken (85%).
Specificity:	Recognizes Human Splicing Factor, Arginine/Serine-Rich 5. Species cross-reactivity: rodent.
Epitope:	aa91-103
Reactivity:	Human, Gorilla, Gibbon, Monkey, Mouse, Rat, Bat, Bovine, Dog, Hamster, Horse, Pig, Rabbit
Purification:	Immunoaffinity purified
Presentation:	PBS, 0.02% sodium azide, 40% glycerol.
Recommended Storage:	Long term: Add glycerol (40-50%) -20°C; Short term: +4°C
Usage Summary:	Immunohistochemistry: LS-B3091 was validated for use in immunohistochemistry on a panel of 21 formalin-fixed, paraffin-embedded (FFPE) human tissues after heat induced antigen retrieval in pH 6.0 citrate buffer. After incubation with the primary antibody, slides were incubated with biotinylated secondary antibody, followed by alkaline phosphatase-streptavidin and chromogen. The stained slides were evaluated by a pathologist to confirm staining specificity. The optimal working concentration for LS-B3091 was determined to be 10 ug/ml.
Uses:	IHC - Paraffin (10 µg/ml), ELISA (Optimal dilution to be determined by the researcher)
Size:	50 µg
Concentration:	1 mg/ml

Immunohistochemistry Image:



Anti-SRSF5 / SFRS5 antibody IHC of human small intestine. Immunohistochemistry of formalin-fixed, paraffin-embedded tissue after heat-induced antigen retrieval. Antibody LS-B3091 concentration 10 ug/ml.

Immunohistochemistry Image:



Anti-SRSF5 / SFRS5 antibody IHC of human kidney. Immunohistochemistry of formalin-fixed, paraffin-embedded tissue after heat-induced antigen retrieval. Antibody LS-B3091 concentration 10 ug/ml.

Requested From:

Japan

Laboratory Reagent For In Vitro Research Use Only

Not for resale without prior written consent from LifeSpan BioSciences, Inc.

Created on 9/23/2014

© 2014 LifeSpan BioSciences