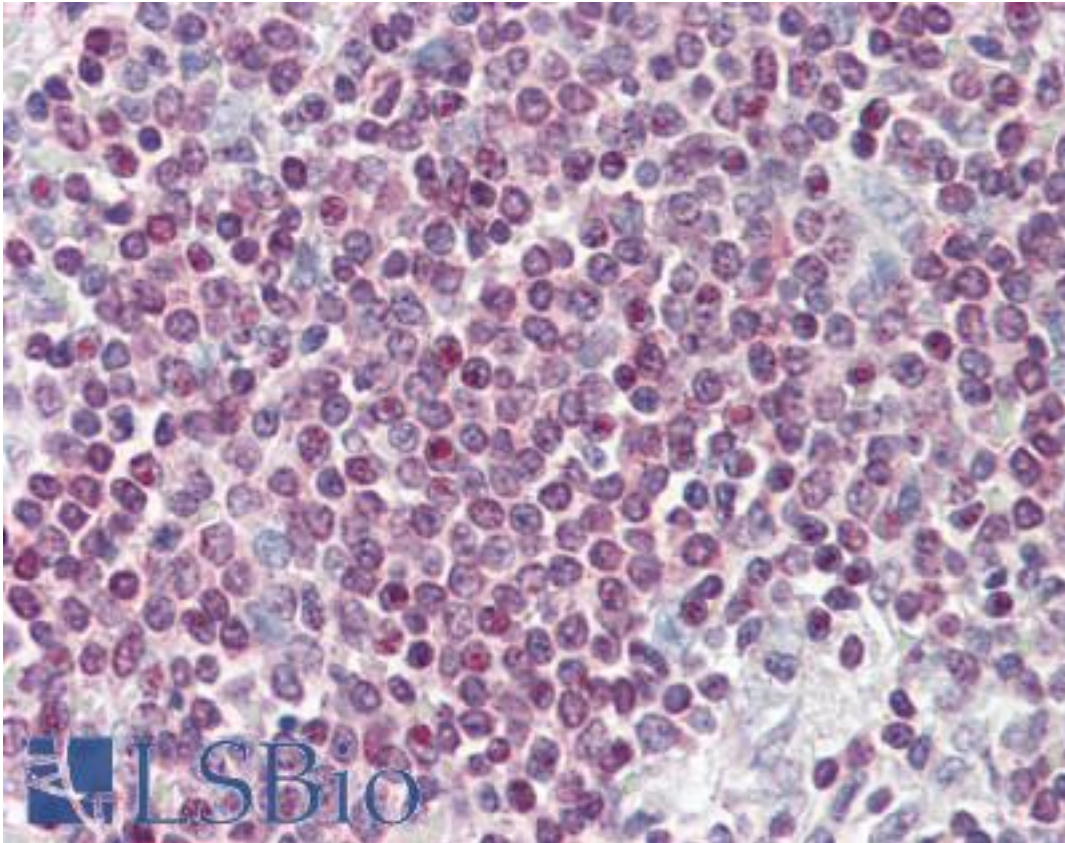


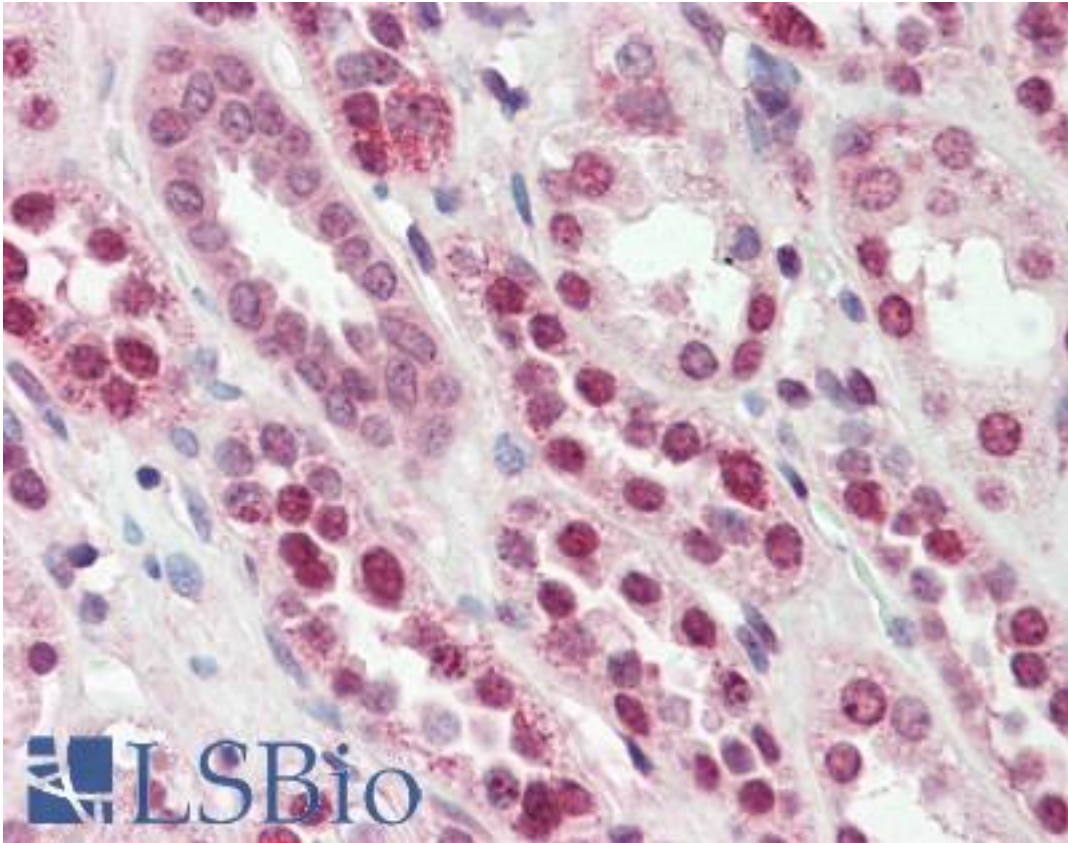
SRSF4 / SFRS4 Rabbit anti-Human Polyclonal (aa287-301) Antibody - LS-B3090 - LSBio	
CatalogID:	LS-B3090
Validation:	This antibody replaces catalog number LS-C10327. It has been validated for use in the following assays: IHC-P.
Target:	serine/arginine-rich splicing factor 4 (SRSF4)
Synonyms:	SRSF4 Antibody, Pre-mRNA-splicing factor SRP75 Antibody, SRP75 Antibody, SRP001LB Antibody, SFRS4 Antibody, SR splicing factor 4 Antibody
Host	SRSF4 antibody was produced in Rabbit
Clonality:	Polyclonal
Isotype:	IgG
Immunogen Species:	SRSF4 / SFRS4 antibody was raised against Human
Antigen Type:	Synthetic peptide - KLH conjugated
Immunogen:	SRSF4 / SFRS4 antibody was raised against synthetic peptide aa287-301, KSRSPSRHKSKSKSR corresponding to human SFRS4 (KLH). MW: ~56.67kD. Percent identity by BLAST analysis: Human, Gorilla, Gibbon, Monkey, Marmoset, Panda, Dog, Bat, Rabbit, Pig (100%); Elephant, Bovine (93%); Mouse, Rat, Hamster, Xenopus, Seabass, Stickleback, Mosquito, Ant, Water flea, Slime mold, Beetle (80%).
Specificity:	Recognizes human SRFS4.
Epitope:	aa287-301
Reactivity:	Human, Gorilla, Gibbon, Monkey, Bat, Dog, Pig, Rabbit
Predicted Reactivity:	Bovine
Purification:	Immunoaffinity purified
Presentation:	PBS, 0.02% sodium azide, 40% glycerol.
Recommended Storage:	Long term: -20°C; Short term: +4°C. Avoid repeat freeze-thaw cycles.
Usage Summary:	Immunohistochemistry: LS-B3090 was validated for use in immunohistochemistry on a panel of 21 formalin-fixed, paraffin-embedded (FFPE) human tissues after heat induced antigen retrieval in pH 6.0 citrate buffer. After incubation with the primary antibody, slides were incubated with biotinylated secondary antibody, followed by alkaline phosphatase-streptavidin and chromogen. The stained slides were evaluated by a pathologist to confirm staining specificity. The optimal working concentration for LS-B3090 was determined to be 10 ug/ml. Western Blot: Preliminary results: Human lymph node 50, 65kD.
Uses:	IHC - Paraffin (10 µg/ml), ELISA (Optimal dilution to be determined by the researcher)
Size:	50 µg
Concentration:	0.65 mg/ml

Immunohistochemistry Image:



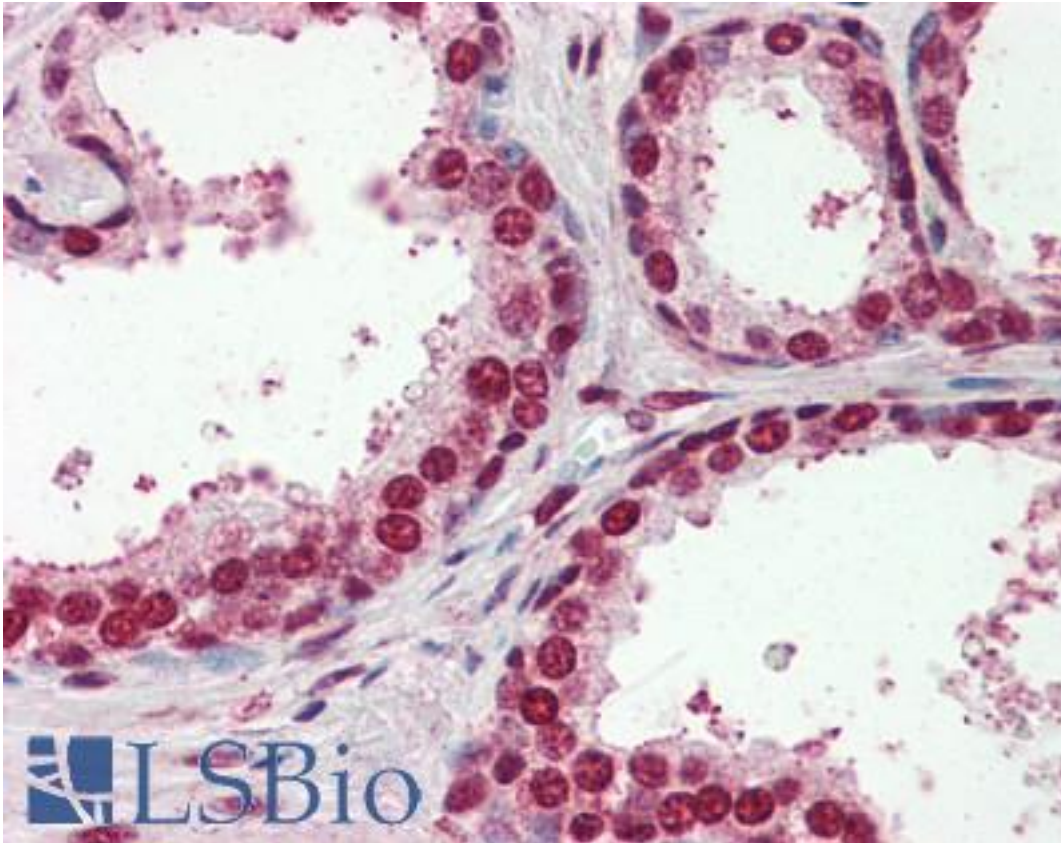
Anti-SRSF4 / SFRS4 antibody IHC of human spleen. Immunohistochemistry of formalin-fixed, paraffin-embedded tissue after heat-induced antigen retrieval. Antibody LS-B3090 concentration 10 ug/ml.

Immunohistochemistry Image:



Anti-SRSF4 / SFRS4 antibody IHC of human kidney. Immunohistochemistry of formalin-fixed, paraffin-embedded tissue after heat-induced antigen retrieval. Antibody LS-B3090 concentration 10 ug/ml.

Immunohistochemistry Image:



Anti-SRSF4 / SFRS4 antibody IHC of human prostate. Immunohistochemistry of formalin-fixed, paraffin-embedded tissue after heat-induced antigen retrieval. Antibody LS-B3090 concentration 10 ug/ml.

Requested From:

Japan

Laboratory Reagent For In Vitro Research Use Only

Not for resale without prior written consent from LifeSpan BioSciences, Inc.

Created on 9/23/2014

© 2014 LifeSpan BioSciences