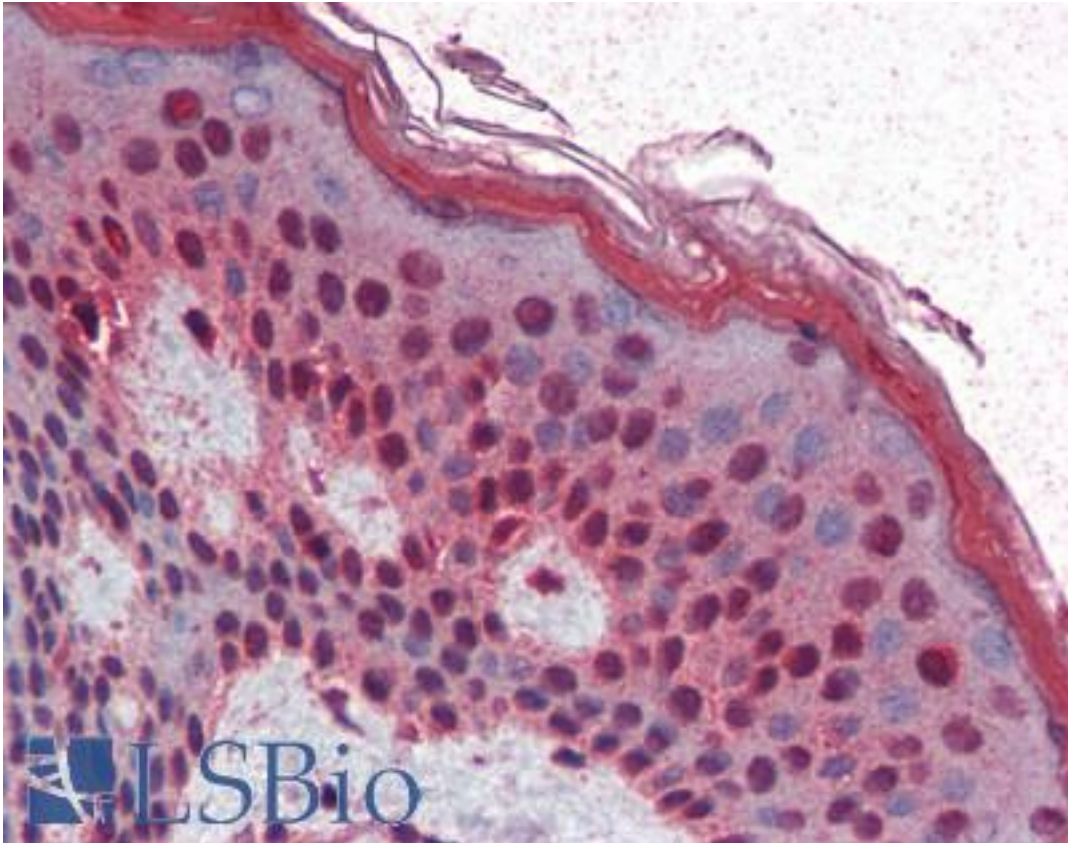


SIM1 Rabbit anti-Human Polyclonal Antibody - LS-B3087 - LSBio

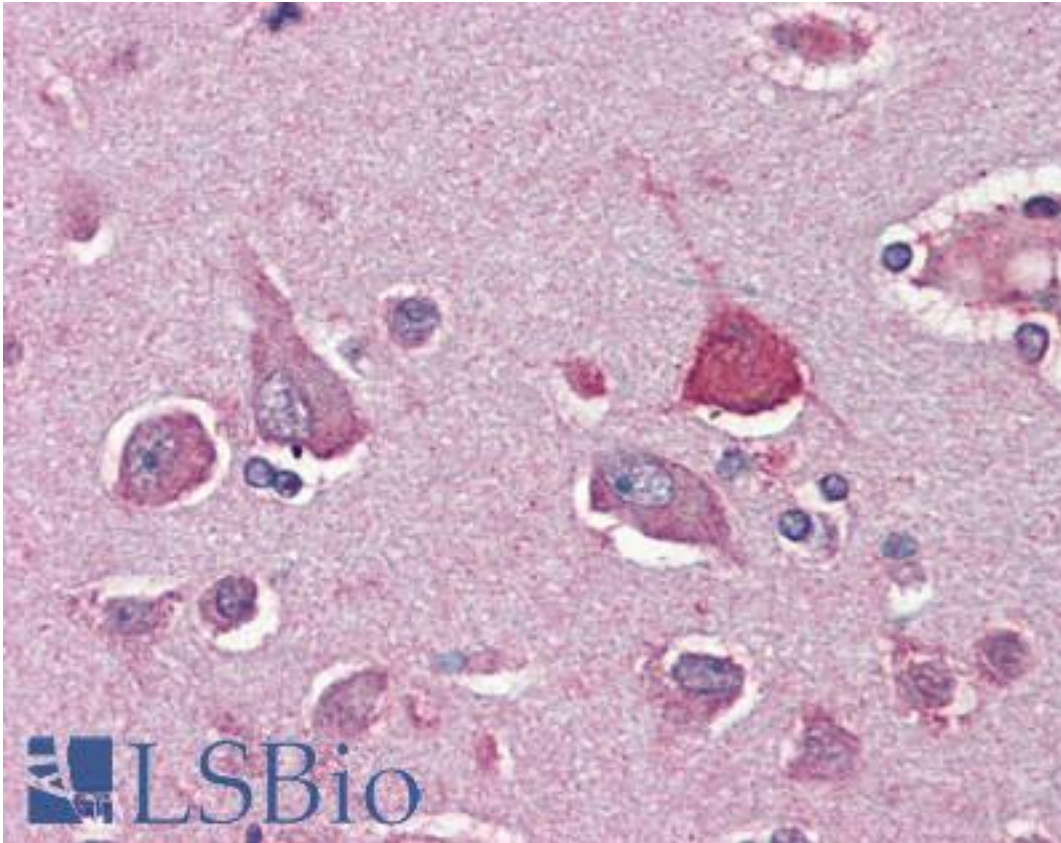
CatalogID:	LS-B3087
Validation:	This antibody replaces catalog number LS-C10158. It has been validated for use in the following assays: IHC-P.
Target:	single-minded family bHLH transcription factor 1 (SIM1)
Synonyms:	SIM1 Antibody, BHLHe14 Antibody, Single-minded homolog 1 Antibody
Host	SIM1 antibody was produced in Rabbit
Clonality:	Polyclonal
Immunogen Species:	SIM1 antibody was raised against Human
Antigen Type:	Synthetic peptide
Immunogen:	SIM1 antibody was raised against synthetic peptide: (13aa) 423-435: ADRPGSQHDASCA. Percent identity by BLAST analysis: Human, Chimpanzee, Gorilla, Gibbon, Monkey, Marmoset, Bovine (100%); Orangutan, Rabbit, Pig (92%); Elephant, Panda, Bat, Dog, Horse (85%).
Specificity:	Recognizes Sim1. Species cross-reactivity: Human and rodent. MW: 85508.7D.
Reactivity:	Human, Chimpanzee, Gorilla, Gibbon, Monkey, Bovine
Predicted Reactivity:	Orangutan, Pig, Rabbit
Purification:	Immunoaffinity purified
Presentation:	PBS, pH 7.2
Recommended Storage:	Long term: -20°C; Short term: +4°C. Avoid repeat freeze-thaw cycles.
Usage Summary:	Immunohistochemistry: LS-B3087 was validated for use in immunohistochemistry on a panel of 21 formalin-fixed, paraffin-embedded (FFPE) human tissues after heat induced antigen retrieval in pH 6.0 citrate buffer. After incubation with the primary antibody, slides were incubated with biotinylated secondary antibody, followed by alkaline phosphatase-streptavidin and chromogen. The stained slides were evaluated by a pathologist to confirm staining specificity. The optimal working concentration for LS-B3087 was determined to be 5 ug/ml.
Uses:	IHC - Paraffin (5 µg/ml), ICC (Optimal dilution to be determined by the researcher)
Size:	50 µg
Concentration:	1 mg/ml

Immunohistochemistry Image:



Anti-SIM1 antibody IHC of human skin. Immunohistochemistry of formalin-fixed, paraffin-embedded tissue after heat-induced antigen retrieval. Antibody LS-B3087 concentration 5 ug/ml.

Immunohistochemistry Image:



Anti-SIM1 antibody IHC of human brain, cortex. Immunohistochemistry of formalin-fixed, paraffin-embedded tissue after heat-induced antigen retrieval. Antibody LS-B3087 concentration 5 ug/ml.

Requested From:

Japan

Laboratory Reagent For In Vitro Research Use Only

Not for resale without prior written consent from LifeSpan BioSciences, Inc.

Created on 9/23/2014

© 2014 LifeSpan BioSciences