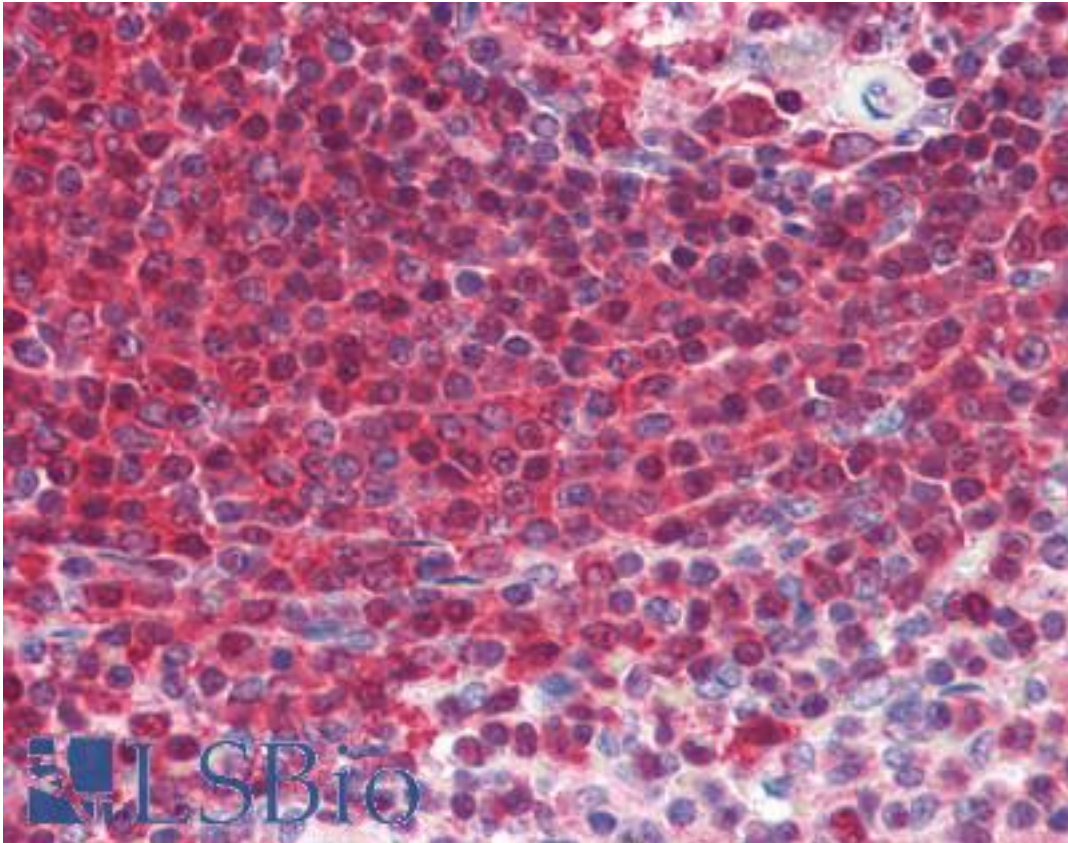


GRB2 Mouse anti-Rat Monoclonal Antibody - LS-B3068 - LSBio

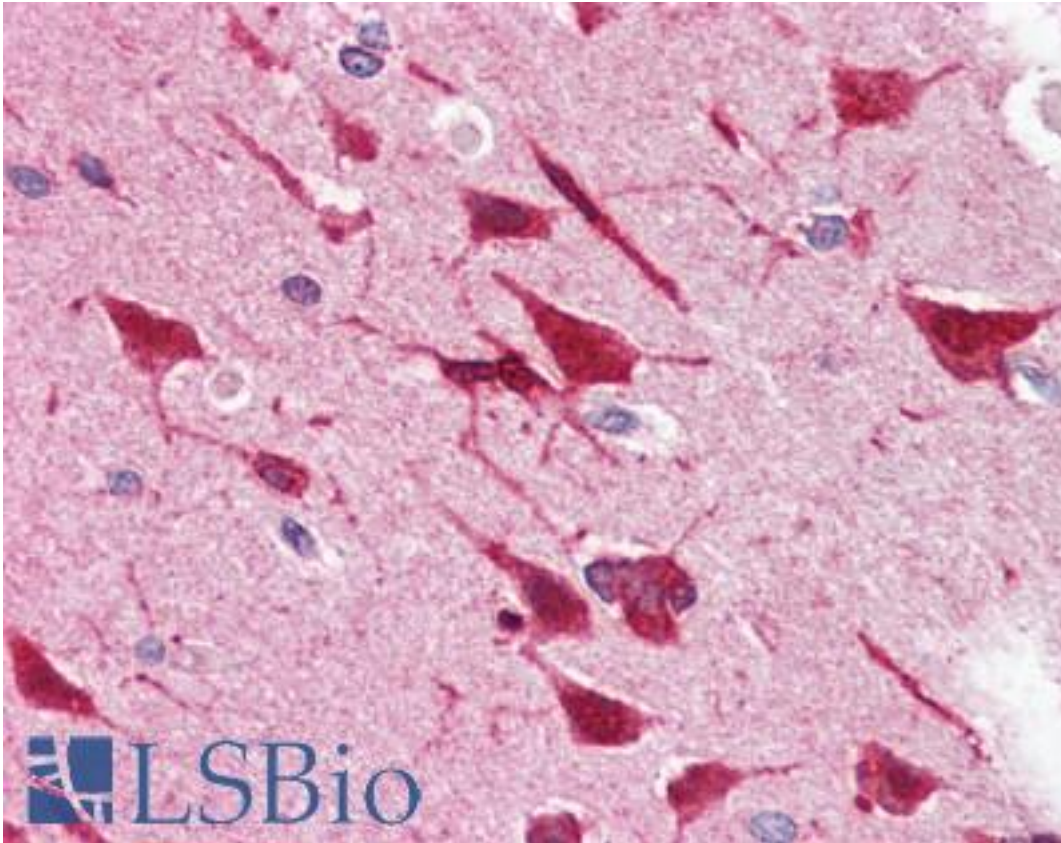
<b>CatalogID:</b>	LS-B3068
<b>Validation:</b>	This antibody replaces catalog number LS-C7285. It has been validated for use in the following assays: IHC-P.
<b>Target:</b>	growth factor receptor-bound protein 2 (GRB2)
<b>Synonyms:</b>	GRB2 Antibody, Abundant SRC homology Antibody, Adapter protein GRB2 Antibody, ASH Antibody, EGFRBP-GRB2 Antibody, MST084 Antibody, MSTP084 Antibody, Protein Ash Antibody, SH2/SH3 adapter GRB2 Antibody, Grb3-3 Antibody, HT027 Antibody, NCKAP2 Antibody
<b>Host</b>	GRB2 antibody was produced in Mouse
<b>Clonality:</b>	Monoclonal
<b>Isotype:</b>	IgG1,k
<b>Immunogen Species:</b>	GRB2 antibody was raised against Rat
<b>Antigen Type:</b>	Recombinant protein
<b>Immunogen:</b>	GRB2 antibody was raised against recombinant rat GRB2/Ash.
<b>Specificity:</b>	Recognizes the N-terminal SH3 region of rat Grb2 at 23-25kD.
<b>Reactivity:</b>	Rat, Human, Mouse, Bovine, Hamster
<b>Purification:</b>	Protein A purified
<b>Presentation:</b>	PBS, 50% glycerol.
<b>Recommended Storage:</b>	Long term: -20°C; Short term: +4°C. Avoid repeat freeze-thaw cycles.
<b>Usage Summary:</b>	Immunohistochemistry: LS-B3068 was validated for use in immunohistochemistry on a panel of 21 formalin-fixed, paraffin-embedded (FFPE) human tissues after heat induced antigen retrieval in pH 6.0 citrate buffer. After incubation with the primary antibody, slides were incubated with biotinylated secondary antibody, followed by alkaline phosphatase-streptavidin and chromogen. The stained slides were evaluated by a pathologist to confirm staining specificity. The optimal working concentration for LS-B3068 was determined to be 5 ug/ml. Western Blot: 0.5-2 mg/ml. Detects GRB2 (23-25kD) in RIPA lysates of non-stimulated human A431 carcinoma cells. Previous lots detected GRB2 in RIPA lysates of mouse 3T3 fibroblasts, rat L6 myoblasts, Chinese hamster ovary cells and bovine brain extract.
<b>Uses:</b>	IHC - Paraffin (5 µg/ml), Western blot (0.5 - 2 µg/ml) (Optimal dilution to be determined by the researcher)
<b>Size:</b>	50 µg
<b>Concentration:</b>	1 mg/ml

**Immunohistochemistry Image:**



Anti-GRB2 antibody IHC of human spleen. Immunohistochemistry of formalin-fixed, paraffin-embedded tissue after heat-induced antigen retrieval. Antibody LS-B3068 concentration 5 ug/ml.

**Immunohistochemistry Image:**



Anti-GRB2 antibody IHC of human brain, cortex. Immunohistochemistry of formalin-fixed, paraffin-embedded tissue after heat-induced antigen retrieval. Antibody LS-B3068 concentration 5 ug/ml.

**Requested From:**

Japan

Laboratory Reagent For In Vitro Research Use Only

Not for resale without prior written consent from LifeSpan BioSciences, Inc.

Created on 9/23/2014

© 2014 LifeSpan BioSciences